

NO. OF COPIES RECEIVED	
DISTRIBUTION	
SANTA FE	1
FILE	1
U.S.G.S.	2
LAND OFFICE	
OPERATOR	

RECEIVED

AUG 2 1982

O. C. D.

ARTESIA OFFICE

APPLICATION FOR PERMIT TO DRILL, DEEPEN, OR PLUG BACK

Type of Work

Type of Well
OIL WELL ☒ GAS WELL ☐ OTHER ☐
DRILL ☒ DEEPEN ☐ PLUG BACK ☐
SINGLE ZONE ☐ MULTIPLE ZONE ☐

Name of Operator

Yates Petroleum Corporation

Address of Operator

207 S. 4th Street, Artesia, New Mexico 88210

Location of Well

UNIT LETTER P LOCATED 330 FEET FROM THE South LINE

330 FEET FROM THE East LINE OF SEC. 14 TWP. 17S RGE. 25E NMPM

5A. Indicate Type of Lease

STATE ☐ FEE ☒

5. State Oil & Gas Lease No.

7. Unit Agreement Name

8. Form or Lease Name

Winters DN

9. Well No.

#2

10. Field and Pool, or Wildcat

Eagle Creek (S.A.)

12. County

Eddy

19. Proposed Depth

approx. 1500'

19A. Formation

San Andres

20. Rotary or C.T.

Rotary

Elevations (Show whether DF, KI, etc.)

3469. GL

21A. Kind & Status Plug. Bond

Blanket

21B. Drilling Contractor

L&M #2

22. Approx. Date Work will start

A.S.A.P.

PROPOSED CASING AND CEMENT PROGRAM

SIZE OF HOLE	SIZE OF CASING	WEIGHT PER FOOT	SETTING DEPTH	SACKS OF CEMENT	EST. TOP
14 1/2"	10 3/4"	30#	approx. 340'	200	circ.
9 1/2"	7"	23#	approx. 1190'	400	circ.
6 1/2"	4 1/2"	9.5#	approx. 1500'	125	

Proposed to drill a San Andres test with approximately 300' of surface casing to shut off gravel and caving. 7" intermediate casing will be run and set 100' below the Artesian zone and if commercial production is encountered a string will be run, perforated and stimulated for production.

Mud Program: FW gel and LCM to 1190' (or dry drill), water to TD.

BOP Program: Bop's will be installed on 7" casing and tested daily.

RECEIVED
F.D. 2-8-82
NEW MEXICO

APPROVAL VALID FOR 130 DAYS

PERMIT EXPIRES 2-5-83

UNLESS DRILLING UNDERWAY

ABOVE SPACE DESCRIBE PROPOSED PROGRAM; IF PROPOSAL IS TO DEEPEN OR PLUG BACK, GIVE DATA ON PRESENT PRODUCTIVE ZONE AND PROPOSED NEW PRODUCTION ZONE. GIVE BLOWOUT PREVENTER PROGRAM IF ANY.

I hereby certify that the information above is true and complete to the best of my knowledge and belief.

Signed Ken Beardsley Title Regulatory Coordinator

Date 8-2-82

(This space for State Use)

APPROVED BY Mr. W. L. Walker TITLE SUPERVISOR, DISTRICT II

DATE AUG 5 1982

CONDITIONS OF APPROVAL, IF ANY:

Notify N.M.O.C.C. in sufficient time to witness cementing

the 7 casing

N MEXICO OIL CONSERVATION COMMISS
WELL LOCATION AND ACREAGE DEDICATION PLAT

RECEIVED

Form C-102
Supersedes C-128
Effective 1-1-65

All distances must be from the outer boundaries of the Section.

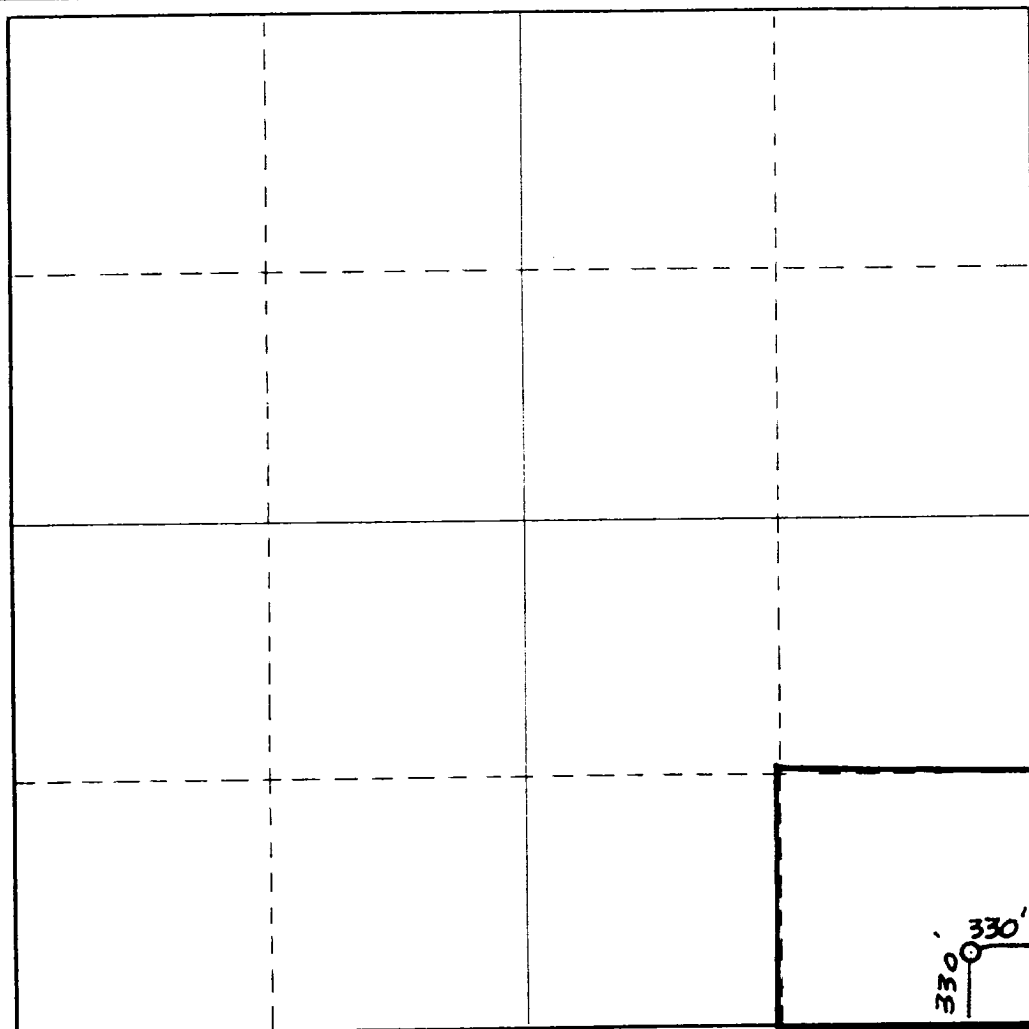
Operator YATES PETROLEUM CORPORATION			Lease Winters DN		AUG 2 1982 Plat No. 2
Unit Letter P	Section 14	Township 17 South	Range 25 East	County O. C. D. ARTESIA, OFFICE	
Actual Footage Location of Well: 330 feet from the South line and 330 feet from the East line					
Ground Level Elev. 3469.	Producing Formation San Andres		Pool Eagle Creek (S.A.)	Dedicated Acreage: 40 Acres	

1. Outline the acreage dedicated to the subject well by colored pencil or hachure marks on the plat below.
2. If more than one lease is dedicated to the well, outline each and identify the ownership thereof (both as to working interest and royalty).
3. If more than one lease of different ownership is dedicated to the well, have the interests of all owners been consolidated by communitization, unitization, force-pooling, etc?

☐ Yes ☐ No If answer is "yes," type of consolidation _____

If answer is "no," list the owners and tract descriptions which have actually been consolidated. (Use reverse side of this form if necessary.) _____

No allowable will be assigned to the well until all interests have been consolidated (by communitization, unitization, forced-pooling, or otherwise) or until a non-standard unit, eliminating such interests, has been approved by the Commission.



CERTIFICATION

I hereby certify that the information contained herein is true and complete to the best of my knowledge and belief.

Ken Beard
Name

Regulatory Coordinator

Position

Yates Petroleum Corporation

Company

8-2-82

Date

I hereby certify that the well location shown on this plat was plotted from field notes of actual surveys made by me or under my supervision, and that the same is true and correct to the best of my knowledge and belief.

Date Surveyed

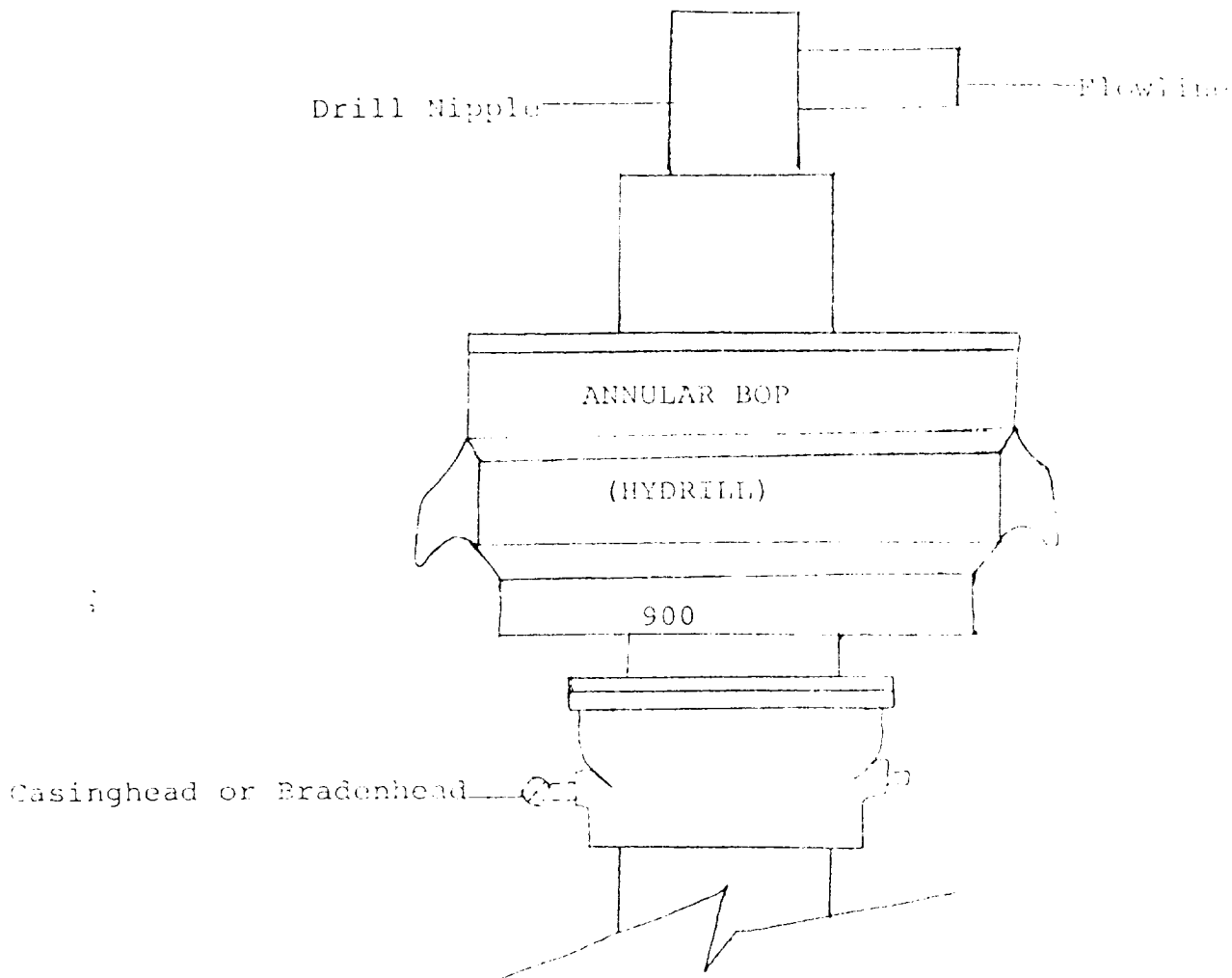
August 1, 1982

Registered Professional Engineer and/or Land Surveyor

Dan R. Reddy
Certificate No.

NM PE&LS #5412

0 330 660 990 1320 1650 1980 2310 2640 2000 1500 1000 500 0



THE FOLLOWING CONSTITUTE MINIMUM BLOWOUT PREVENTER REQUIREMENTS

1. All preventers to be hydraulically operated with secondary manual controls installed prior to drilling out from under casing.
2. All connections from operating manifolds to preventers to be all steel. Hole or tube a minimum of one inch in diameter.
3. The available closing pressure shall be at least 15% in excess of that required with sufficient volume to operate the BOP's.
4. All connections to and from preventer to have a pressure rating equivalent to that of the BOP's.
5. Hole must be kept filled on trips below intermediate casing.