

P. O. BOX 2088
SANTA FE, NEW MEXICO 87501

NO. OF COPIES RECEIVED	
DISTRIBUTION	
SANTA FE	1
FILE	1
U.S.G.S.	2
LAND OFFICE	1
OPERATOR	1

APPLICATION FOR PERMIT TO DRILL, DEEPEN, OR PLUG BACK

Type of Work

DRILL ☒DEEPEN ☐PLUG BACK ☐

Type of Well

OIL WELL ☒GAS WELL ☐OTHER ☐SINGLE ZONE ☐MULTIPLE ZONE ☐

Name of Operator

Yates Petroleum Corporation

Address of Operator

207 S. 4th, Artesia, New Mexico 88210

Location of Well

UNIT LETTER C

LOCATED 330

FEET FROM THE

North

LINE

2310

FEET FROM THE West

LINE OF SEC. 23

TWP. 17S

RGE. 25E

5A. Indicate Type of Lease

STATE ☐FEE ☒

5. State Oil & Gas Lease No.

7. Unit Agreement Name

8. Farm or Lease Name

Gissler "AV"

9. Well No.

27

10. Field and Pool, or Wildcat

Eagle Creek SA

17. County

Eddy

19. Proposed Depth

appr. 1500'

19A. Formation

San Andres

20. Rotary or C.T.

Rotary

21. Kind & Status Plug. Bond

3475.1 GL

Blanket

21B. Drilling Contractor

L&M #2

22. Approx. Date Work will start

ASAP

PROPOSED CASING AND CEMENT PROGRAM

SIZE OF HOLE	SIZE OF CASING	WEIGHT PER FOOT	SETTING DEPTH	SACKS OF CEMENT	EST. TOP
14 1/2"	10 3/4"	30#	appr. 350'	200 sx	circulated
9 1/2"	7"	23#	appr. 1150'	400 sx	circulated
6 1/4"	4 1/2"	9.5#	appr. 1500'	150 sx	circulated

Propose to drill a San Andres test. Approximately 350' of 10 3/4" casing will be run and cemented to the surface to shut off gravel and caving. 7" casing will be run 100' below the Artesian Zone, cemented to the surface. If commercial, production string will be run, perforated and stimulated for production.

MUD PROGRAM: FW gel and LCM to 1100' (or dry drill), water to TD.

BOP PROGRAM: BOP's will be installed on 7" casing and tested daily.

APPROVAL VALID FOR 180 DAYS
PERMIT EXPIRES 7-10-82
UNLESS DRILLING UNDERWAY

BOVE SPACE DESCRIBE PROPOSED PROGRAM: IF PROPOSAL IS TO DEEPEN OR PLUG BACK, GIVE DATA ON PRESENT PRODUCTIVE ZONE AND PROPOSED NEW PRODUCTIVE ZONE. GIVE BLOWOUT PREVENTER PROGRAM, IF ANY.

I hereby certify that the information above is true and complete to the best of my knowledge and belief.

By Cy Carver Title Regulatory Coordinator

Date 8/4/82

(This space for State Use)

APPROVED BY

TITLE

OIL AND GAS INSPECTOR

DATE

AUG 11 1982

CONDITIONS OF APPROVAL, IF ANY:

Notify N.M.O.C.C. in writing
time to witness cementing

the 7" casing

NEW MEXICO OIL CONSERVATION COMMISSION
WELL LOCATION AND ACREAGE DEDICATION PLAT

Form C-102
Supersedes C-128
Effective 1-1-65

All distances must be from the outer boundaries of the Section.

Operator YATES PETROLEUM CORPORATION		Lease Gissler AV		Well No. 27
Map Letter C	Section 23	Township 17 South	Range 25 East	County Eddy

Actual Footage Location of Well:

330 feet from the **North** line and **2310** feet from the **West** line.

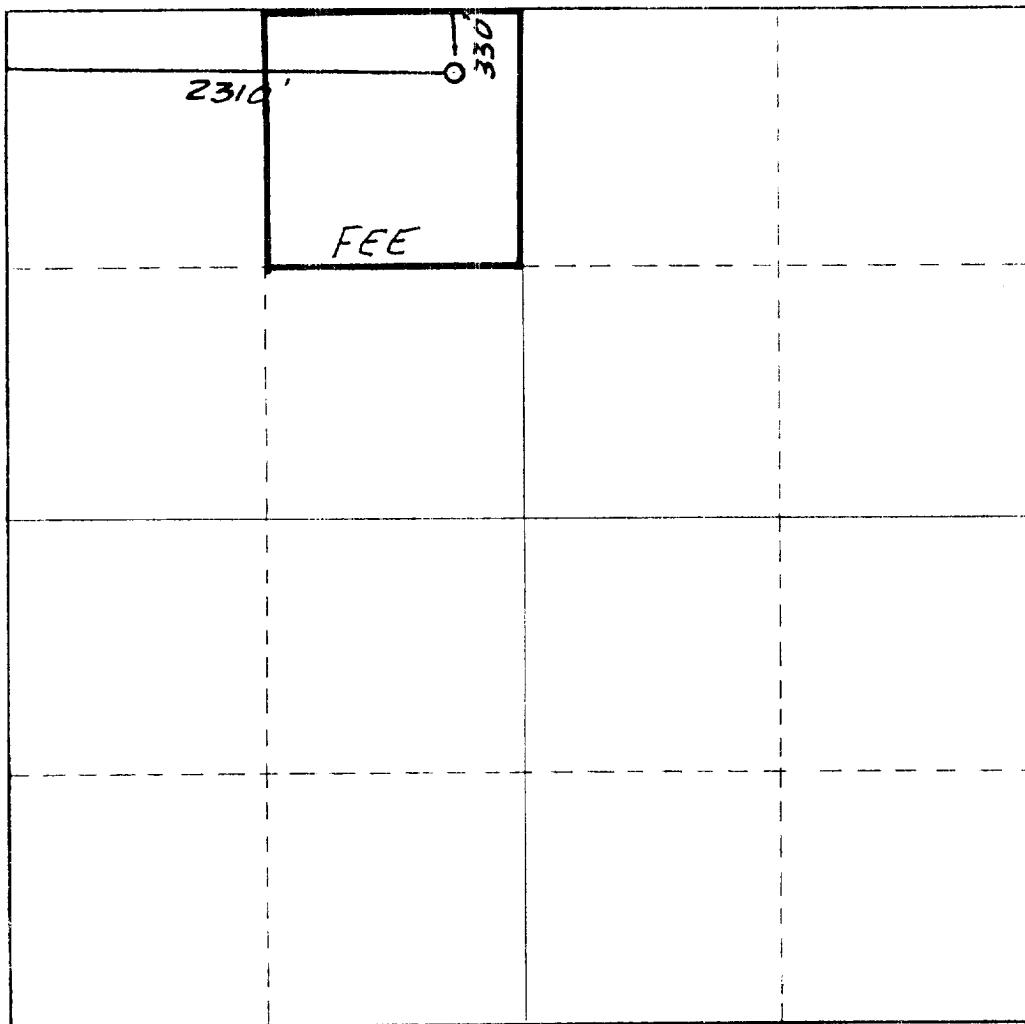
Ground Level Elev. 3475.	Producing Formation San Andres	Pool Eagle Creek (SA)	Dedicated Acreage: 40 Acres
------------------------------------	--	---------------------------------	---------------------------------------

- Outline the acreage dedicated to the subject well by colored pencil or hachure marks on the plat below.
- If more than one lease is dedicated to the well, outline each and identify the ownership thereof (both as to working interest and royalty).
- If more than one lease of different ownership is dedicated to the well, have the interests of all owners been consolidated by communitization, unitization, force-pooling, etc?

☐ Yes ☐ No If answer is "yes," type of consolidation _____

If answer is "no," list the owners and tract descriptions which have actually been consolidated. (Use reverse side of this form if necessary.) _____

No allowable will be assigned to the well until all interests have been consolidated (by communitization, unitization, forced-pooling, or otherwise) or until a non-standard unit, eliminating such interests, has been approved by the Commission.



CERTIFICATION

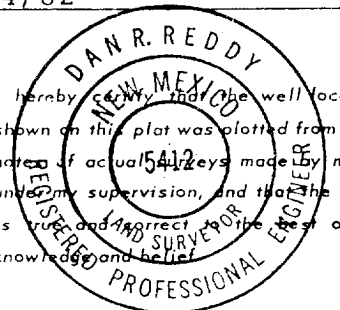
I hereby certify that the information contained herein is true and complete to the best of my knowledge and belief.

Cy Cowan

Name: **Cy Cowan**
Position: **Regulatory Coordinator**
Company: **Yates Petroleum Corp.**

Date: **8/4/82**

I hereby certify that the well location shown on this plat was plotted from field notes of actual measurements made by me or under my supervision, and that the same is true and correct to the best of my knowledge and belief.

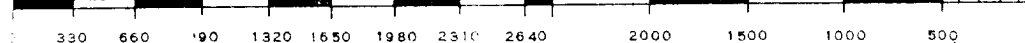


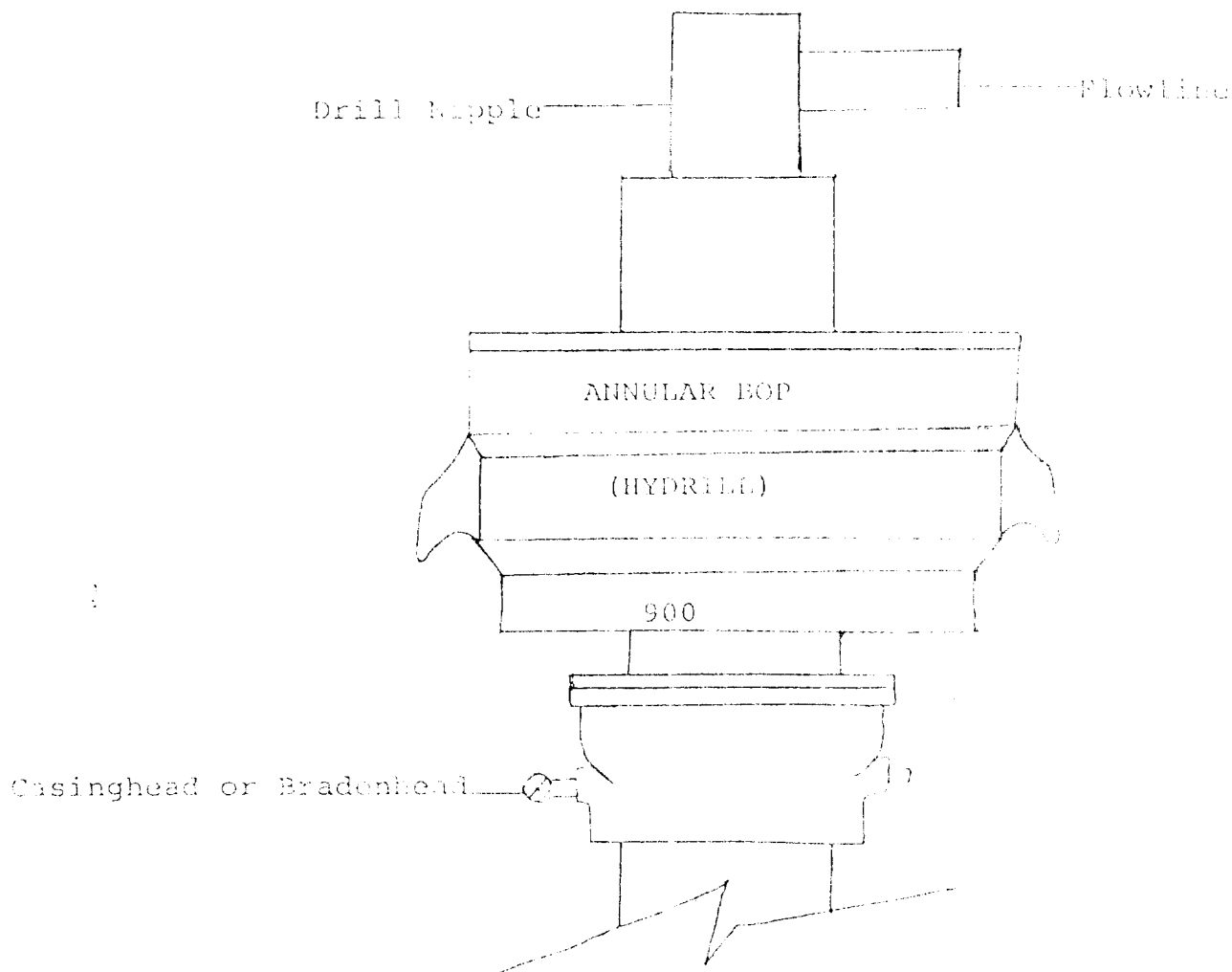
Date Surveyed: **August 2, 1982**

Registered Professional Engineer and/or Land Surveyor

Dan R. Reddy

Certificate No. **NM PE&LS #5412**





THE FOLLOWING CONSTITUTE MINIMUM BLOWOUT PREVENTER REQUIREMENTS

1. All preventers to be hydraulically operated with secondary manual controls installed prior to drilling out from under casing.
2. All connections from operating manifolds to preventers to be all steel. Hole or tube a minimum of one inch in diameter.
3. The available closing pressure shall be at least 15% in excess of that required with sufficient volume to operate the BOP's.
4. All connections to and from preventer to have a pressure rating equivalent to that of the BOP's.
5. Hole must be kept filled on trips below intermediate casing.