

NO. OF COPIES RECEIVED		
DISTRIBUTION		
SANTA FE	1	
FILE	1	✓
U.S.G.S.	2	
LAND OFFICE		
OPERATOR	1	

AUG 5 1982  
O. C. D.

APPLICATION FOR PERMIT TO DRILL, DEEPEN, OR PLUG BACK

Type of Work  
Type of Well  
OIL WELL  GAS WELL  OTHER   
DRILL  DEEPEN  PLUG BACK   
SINGLE ZONE  MULTIPLE ZONE

Name of Operator  
Yates Petroleum Corporation ✓

Address of Operator  
207 S. 4th, Artesia, New Mexico 88201

Location of Well  
UNIT LETTER B LOCATED 330 FEET FROM THE North LINE  
1650 FEET FROM THE East LINE OF SEC. 27 TWP. 17S RGE. 25E N.M.P.M.

5A. Indicate Type of Lease  
STATE  FEE   
5. State Oil & Gas Lease No.  
7. Unit Agreement Name  
8. Farm or Lease Name  
Ingram Jackson "BV"  
9. Well No.  
8  
10. Field and Pool, or Wildcat  
Eagle Creek/SA  
12. County  
Eddy

19. Proposed Depth appr. 1500'	19A. Formation San Andres	20. Rotary or C.T. Rotary
21A. Kind & Status Plug. Bond Blanket	21B. Drilling Contractor L&M #2	22. Approx. Date Work will start ASAP

PROPOSED CASING AND CEMENT PROGRAM

SIZE OF HOLE	SIZE OF CASING	WEIGHT PER FOOT	SETTING DEPTH	SACKS OF CEMENT	EST. TOP
14 1/2"	10 3/4"	30#	appr. 340'	200 sx	circulated
9 1/2"	7"	23#	appr. 1140'	400 sx	circulated
6 1/2"	4 1/2"	9.5#	appr. 1500'	125	circulated

We propose to drill a San Andres test with approximately 340' of surface casing to shut off gravel and caving. 7" intermediate casing will be run and set 100' below the Artesian Zone and if commercial production is encountered, a string will be run, perforated and stimulated for production.

MUD PROGRAM: FW gel and LCM to 1140', (or dry drill), water to TD.

BOP PROGRAM: BOP's will be installed on 7" casing and tested daily.

APPROVAL VALID FOR 180 DAYS  
PERMIT EXPIRES 2-10-83  
UNLESS DRILLING UNDERWAY

ABOVE SPACE DESCRIBE PROPOSED PROGRAM: IF PROPOSAL IS TO DEEPEN OR PLUG BACK, GIVE DATA ON PRESENT PRODUCTIVE ZONE AND PROPOSED NEW PRODU ZONE. GIVE BLOWOUT PREVENTER PROGRAM, IF ANY.

I hereby certify that the information above is true and complete to the best of my knowledge and belief.  
Ken Beardsley Title Regulatory Coordinator Date 8/4/82  
(This space for State Use)

APPROVED BY [Signature] TITLE OIL AND GAS INSPECTOR DATE AUG 10 1982

CONDITIONS OF APPROVAL, IF ANY:  
Notify N.M.O.C.C. in sufficient time to witness cementing

the casing

NEW MEXICO OIL CONSERVATION COMMISSION  
WELL LOCATION AND ACREAGE DEDICATION PLAT

Form C-102  
Supersedes C-128  
Effective 1-1-65

All distances must be from the outer boundaries of the Section.

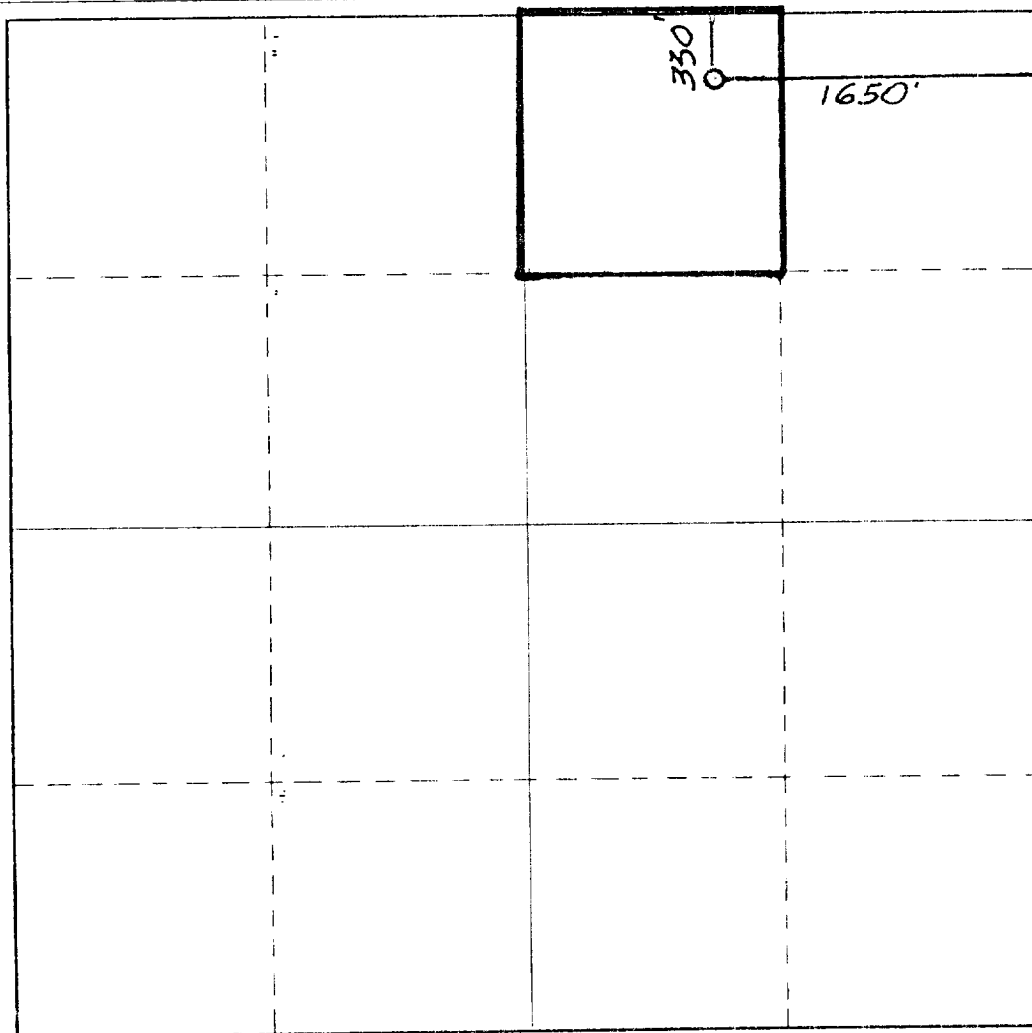
For <b>YATES PETROLEUM CORPORATION</b>		Lease <b>Ingram Jackson BV <del>Federal</del></b>		Well No. <b>8</b>
Tract Letter <b>B</b>	Section <b>27</b>	Township <b>17 South</b>	Range <b>25 East</b>	County <b>Eddy</b>
Actual Postage Location of Well:				
<b>330</b>	feet from the	<b>North</b>	line and	<b>1650</b> feet from the <b>East</b> line
Ground Level Elev. <b>3520.</b>	Producing Formation <b>San Andres</b>		Pool <b>Eagle Creek (SA)</b>	Dedicated Acreage: <b>40</b> Acres

1. Outline the acreage dedicated to the subject well by colored pencil or hachure marks on the plat below.
2. If more than one lease is dedicated to the well, outline each and identify the ownership thereof (both as to working interest and royalty).
3. If more than one lease of different ownership is dedicated to the well, have the interests of all owners been consolidated by communitization, unitization, force-pooling, etc?

Yes     No    If answer is "yes," type of consolidation \_\_\_\_\_

If answer is "no," list the owners and tract descriptions which have actually been consolidated. (Use reverse side of this form if necessary.) \_\_\_\_\_

No allowable will be assigned to the well until all interests have been consolidated (by communitization, unitization, forced-pooling, or otherwise) or until a non-standard unit, eliminating such interests, has been approved by the Commission.



CERTIFICATION

I hereby certify that the information contained herein is true and complete to the best of my knowledge and belief.

*Ken Beardemphl*  
Name

Ken Beardemphl  
Position

Regulatory Coordinator  
Company

Yates Petroleum Corp.

Date  
8/4/82

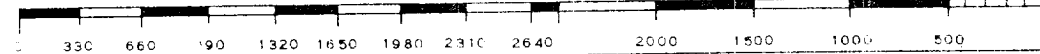
I hereby certify that the well location shown on this plat was plotted from field notes of actual surveys made by me or under my supervision, and that the same is true and correct to the best of my knowledge and belief.

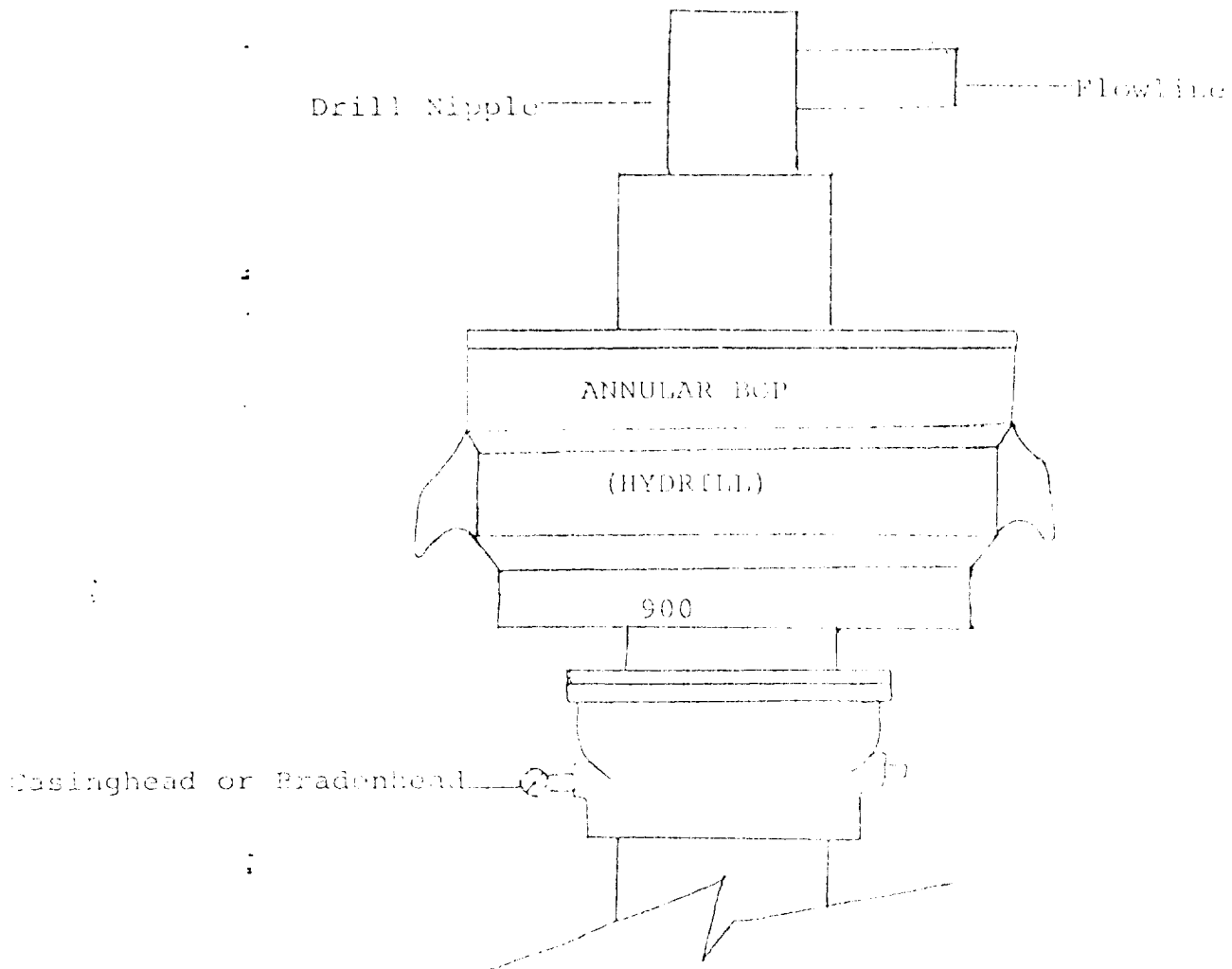
Date Surveyed  
August 2, 1982

Registered Professional Engineer  
and/or Land Surveyor

*Dan R. Reddy*

Certificate No.  
NM PE&LS #5412





THE FOLLOWING CONSTITUTE MINIMUM BLOWOUT PREVENTER REQUIREMENTS

1. All preventers to be hydraulically operated with secondary manual controls installed prior to drilling out from under casing.
2. All connections from operating manifolds to preventers to be all steel. Hole or tube a minimum of one inch in diameter.
3. The available closing pressure shall be at least 15% in excess of that required with sufficient volume to operate the BOP's.
4. All connections to and from preventer to have a pressure rating equivalent to that of the BOP's.
5. Hole must be kept filled on trips below intermediate casing.