

NO. OF COPIES RECEIVED	
DISTRIBUTION	
SANTA FE	1
FILE	1
U.S.G.S.	1
LAND OFFICE	1
OPERATOR	

REC'D

AUG 10 1982

O. C. D.

ARTESIA, OFFICE

APPLICATION FOR PERMIT TO DRILL, DEEPEN, OR PLUG BACK

1. Type of Work  
 a. Type of Well  
 OIL WELL ☒ GAS WELL ☐ OTHER ☐  
 b. Type of Well  
 DRILL ☒ DEEPEN ☐ PLUG BACK ☐  
 c. Type of Well  
 OIL WELL ☒ GAS WELL ☐ OTHER ☐  
 SINGLE ZONE ☐ MULTIPLE ZONE ☐

Name of Operator  
 Yates Petroleum Corporation

Address of Operator  
 207 South 4th Street, Artesia, New Mexico 88210

Location of Well  
 UNIT LETTER H 6 LOCATED 1650 FEET FROM THE North LINE  
1750 FEET FROM THE East LINE OF SEC. 23 TWP. 17 RGE. 25 NMPM

5A. Indicate Type of Lease  
 STATE ☐ FEE ☒  
 5. State Oil & Gas Lease No.  
 7. Unit Agreement Name  
 8. Farm or Lease Name  
 Gissler AV  
 9. Well No.  
 28  
 10. Field and Pool, or Wildcat  
 Eagle Creek, (SA)  
 12. County  
 Eddy

19. Proposed Depth  
 Approx 1500'  
 19A. Formation  
 Abo  
 20. Rotary or C.T.  
 Rotary  
 21A. Kind & Status Plug. Bond  
 Blanket  
 21B. Drilling Contractor  
 L & M #2  
 22. Approx. Date Work will start  
 ASAP

PROPOSED CASING AND CEMENT PROGRAM

SIZE OF HOLE	SIZE OF CASING	WEIGHT PER FOOT	SETTING DEPTH	SACKS OF CEMENT	EST. TOP
14 1/2"	10 3/4"	32#	approx 350'	200 circulate	
9 1/2"	7"	30#	approx 1150'	700 circulate	
6 1/4"	4 1/2"	10.5#	approx 1500'	circulate	

Propose to drill a San Andres test. Approximately 350' of 10 3/4" casing will be run and cemented to the surface to shut off gravel and caving, and 7" casing will be run 100' below the Artesian Zone, cemented to the surface. A tapered oil string will be run and cemented, perforated and sand frac'd for production.

MUD PROGRAM: Fresh water, mud w/LCM from surface to 1150', fresh water to total depth.

BOP PROGRAM: BOP's to be installed on 7" casing and tested daily for operational.

APPROVAL VALID FOR 180 DAYS  
 PERMIT EXPIRES 2-12-83  
 UNLESS DRILLING UNDERWAY

BELOW SPACE DESCRIBE PROPOSED PROGRAM: IF PROPOSAL IS TO DEEPEN OR PLUG BACK, GIVE DATA ON PRESENT PRODUCTIVE ZONE AND PROPOSED NEW PRODUCTIVE ZONE. GIVE BLOWOUT PREVENTER PROGRAM, IF ANY.

I hereby certify that the information above is true and complete to the best of my knowledge and belief.

By Cy Coman Title Regulatory Coordinator Date 8-6-82  
 (This space for State Use)

APPROVED BY Mike Williams TITLE SUPERVISOR, DISTRICT II DATE AUG 12 1982  
 CONDITIONS OF APPROVAL, IF ANY:

Notify N.M.O.C.C. in sufficient  
 time to witness cementing  
 the 7 casing

All distances must be from the outer boundaries of the Section.

AUG 10 1982

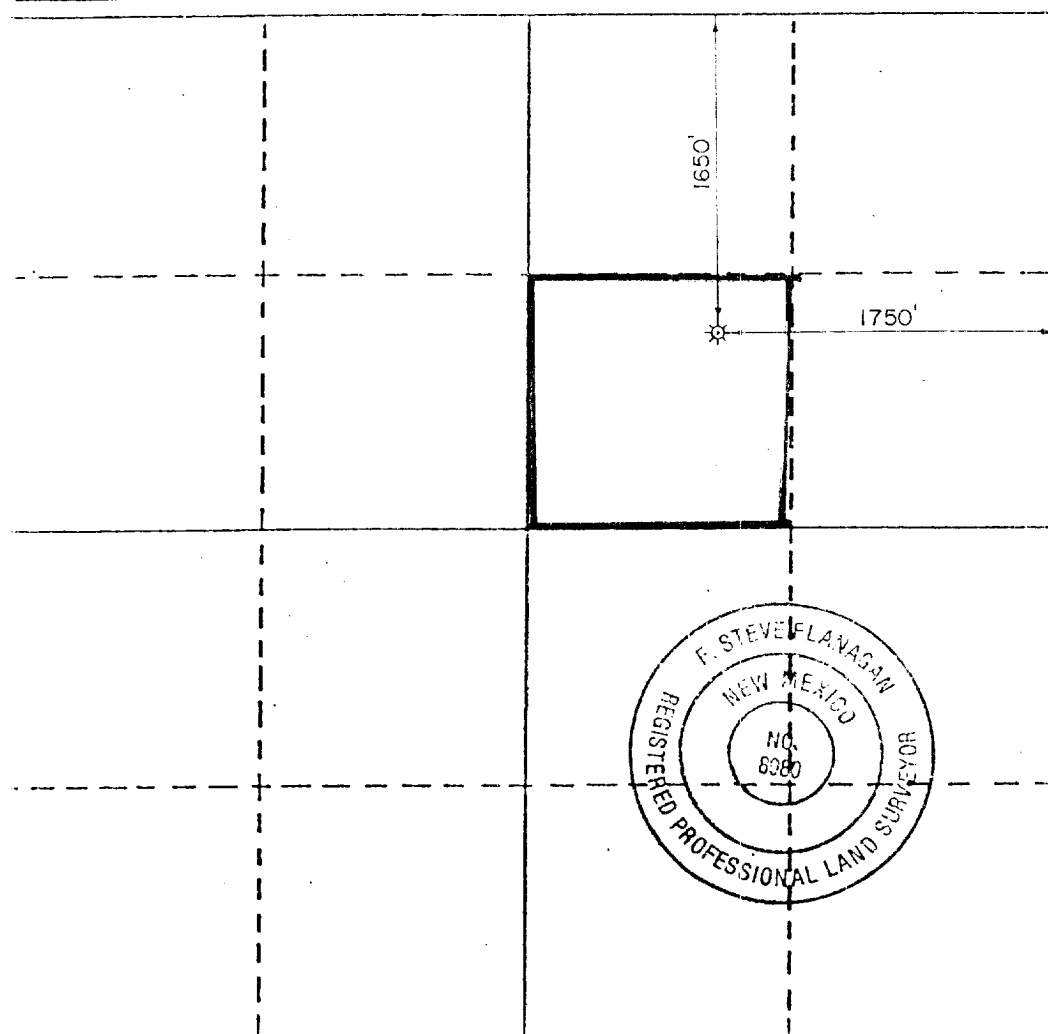
Operator YATES PETROLEUM CORP.		Lease GISSLER "A.V."		Well No. 28
Initial Letter G	Section 23	Township T 17 S	Range R 25 E	County O. C. D. EDDY
Actual Footage Location of Well: 1650 feet from the NORTH line and 1750 feet from the EAST line				
Ground Level Elev. 3489 ft.	Producing Formation SAN ANDRES	Pool EAGLE Creek (SA)	Dedicated Acreage: 40 Acres	

- Outline the acreage dedicated to the subject well by colored pencil or hatchure marks on the plat below.
- If more than one lease is dedicated to the well, outline each and identify the ownership thereof (both as to working interest and royalty).
- If more than one lease of different ownership is dedicated to the well, have the interests of all owners been consolidated by communization, unitization, force-pooling, etc?

☐ Yes ☒ No If answer is "yes," type of consolidation \_\_\_\_\_

If answer is "no," list the owners and tract descriptions which have actually been consolidated. (Use reverse side of this form if necessary.) \_\_\_\_\_

No allowable will be assigned to the well until all interests have been consolidated (by communization, unitization, forced-pooling, or otherwise) or until a non-standard unit, eliminating such interests, has been approved by the Division.



CERTIFICATION

I hereby certify that the information contained herein is true and complete to the best of my knowledge and belief.

Name  
Cy Cowan  
Position  
Regulatory Coordinator  
Company  
Yates Petroleum Corp  
Date  
8-10-82

I hereby certify that the well location shown on this plat was plotted from field notes of actual surveys made by me or under my supervision, and that the same is true and correct to the best of my knowledge and belief.

9 AUGUST 1982  
Date Surveyed  
F. Steve Flanagan  
Registered Professional Engineer and/or Land Surveyor

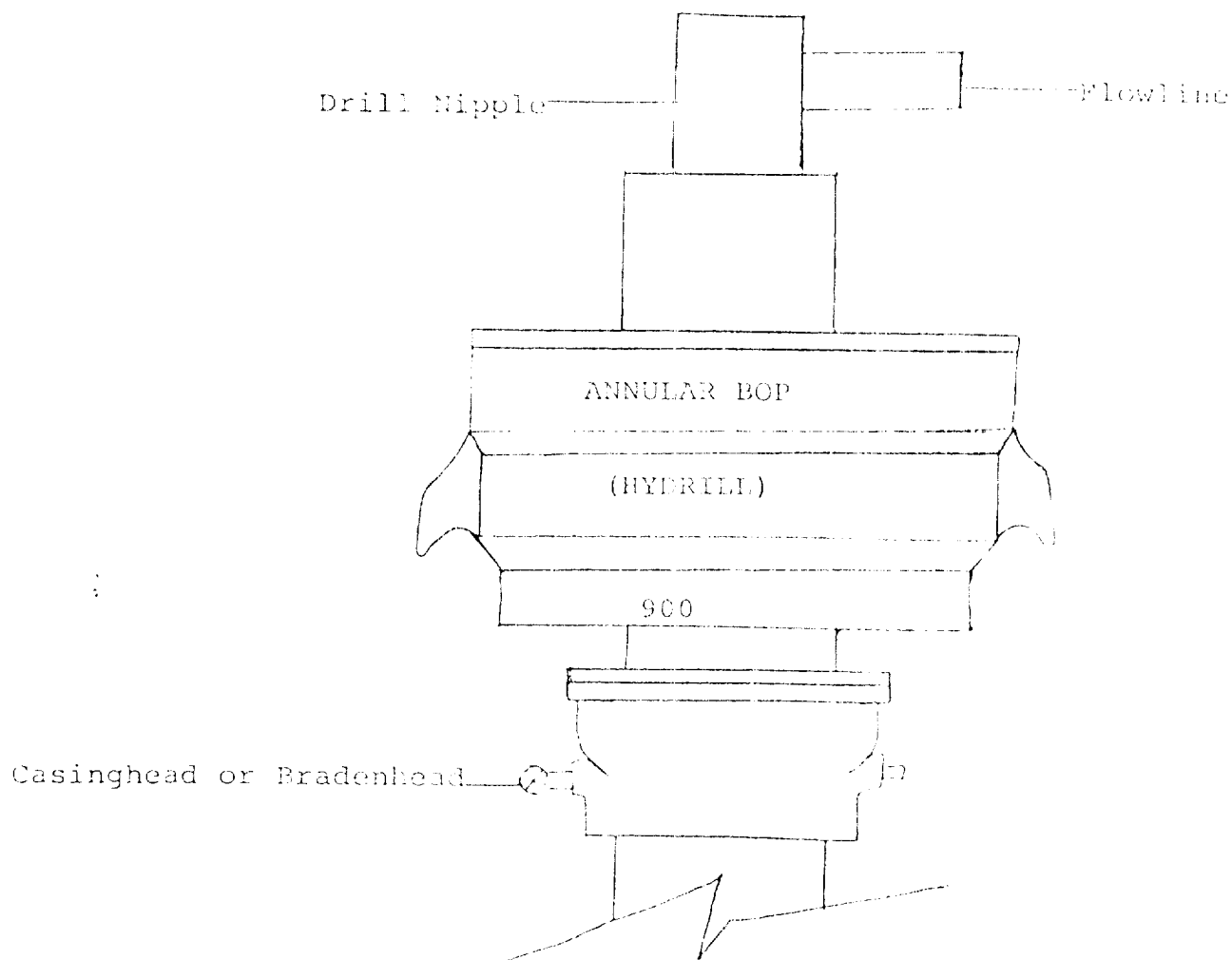
Certificate No. 8080

330 660 990 1320 1650 1980 2310 2640 2970 3300 3630 3960 4290 4620 4950 5280 5610 5940 6270 6600

RECEIVED

AUG 10 1982

O. C. D.  
ARTESIA, OFFICE



THE FOLLOWING CONSTITUTE MINIMUM BLOWOUT PREVENTER REQUIREMENTS

1. All preventers to be hydraulically operated with secondary manual controls installed prior to drilling out from under casing.
2. All connections from operating manifolds to preventers to be all steel. Hole or tube a minimum of one inch in diameter.
3. The available closing pressure shall be at least 15% in excess of that required with sufficient volume to operate the BOP's.
4. All connections to and from preventer to have a pressure rating equivalent to that of the BOP's.
5. Hole must be kept filled on trips below intermediate casing.