

NO. OF COPIES RECEIVED	
DISTRIBUTION	
SANTA FE	1
FILE	
U.S.G.S.	
LAND OFFICE	1
OPERATOR	

RECEIVED

AUG 10 1982

O. C. D.

ARTESIA OFFICE

APPLICATION FOR PERMIT TO DRILL, DEEPEN, OR PLUG BACK

Type of Work
Type of Well
OIL WELL ☒ GAS WELL ☐ OTHER ☐
Name of Operator
Address of Operator
Location of Well
UNIT LETTER K LOCATED 1650' FEET FROM THE South LINE
1650' FEET FROM THE West LINE OF SEC. 23 TWP. 17 RGE. 25 NMPM

5A. Indicate Type of Lease
STATE ☐ FEE ☒
5. State Oil & Gas Lease No.
7. Unit Agreement Name
8. Farm or Lease Name
Gissler AV
9. Well No.
29
10. Field and Pool, or Wildcat
Eagle Creek (SA)
12. County
Eddy

19. Proposed Depth
Approx. 1500'
19A. Formation
Abe
20. Rotary or C.T.
Rotary
21A. Kind & Status Plug. Bond
Blanket
21B. Drilling Contractor
L & M #2
22. Approx. Date Work will start
ASAP

11. Elevation (show whether D.F., R.I., etc.)
3502 GL

PROPOSED CASING AND CEMENT PROGRAM

SIZE OF HOLE	SIZE OF CASING	WEIGHT PER FOOT	SETTING DEPTH	SACKS OF CEMENT	EST. TOP
14 1/2"	10 3/4"	32#	approx. 350'	200 circulate	
9 1/2"	7"	30#	approx. 1150'	700 circulate	
6 1/4"	4 1/2"	10.5#	approx. 1500'	Circulate	

Propose to drill a San Andres test. Approximately 350' of 10 3/4" casing will be run and cemented to the surface to shut off gravel and caving, and 7" casing will be run 100' below the Artesian Zone, cemented to the surface. A tapered oil string will be run and cemented, perforated and sand frac'd for production.

MUD PROGRAM: Fresh water, mud w/LCM from surface to 1150', fresh water to total depth.

BOP PROGRAM: BOP's to be installed on 7" casing and tested daily for operational.

APPROVAL VALID FOR 15 DAYS
PERMIT EXPIRES 2-15-83
UNLESS DRILLING UNDERWAY

BOVE SPACE DESCRIBE PROPOSED PROGRAM. IF PROPOSAL IS TO DEEPEN OR PLUG BACK, GIVE DATA ON PRESENT PRODUCTIVE ZONE AND PROPOSED NEW PRODUCTIVE ZONE. GIVE BLOWOUT PREVENTER PROGRAM, IF ANY.

Subj certify that the information above is true and complete to the best of my knowledge and belief.

ed Cy Cowan Title Regulatory Coordinator Date 8-6-82

(This space for State Use)

ROVED BY Mike Walker TITLE SUPERVISOR, DISTRICT II DATE AUG 12 1982

DITIONS OF APPROVAL, IF ANY:

Notify N.M.O.C.C. in sufficient
time to witness cementing
the 7" casing

NEW MEXICO OIL CONSERVATION COMMISSION
WELL LOCATION AND ACREAGE DEDICATION PLAT

RECEIVED

Form C-102
Supersedes C-128
Effective 1-1-65

AUG 10 1982

All distances must be from the outer boundaries of the Section

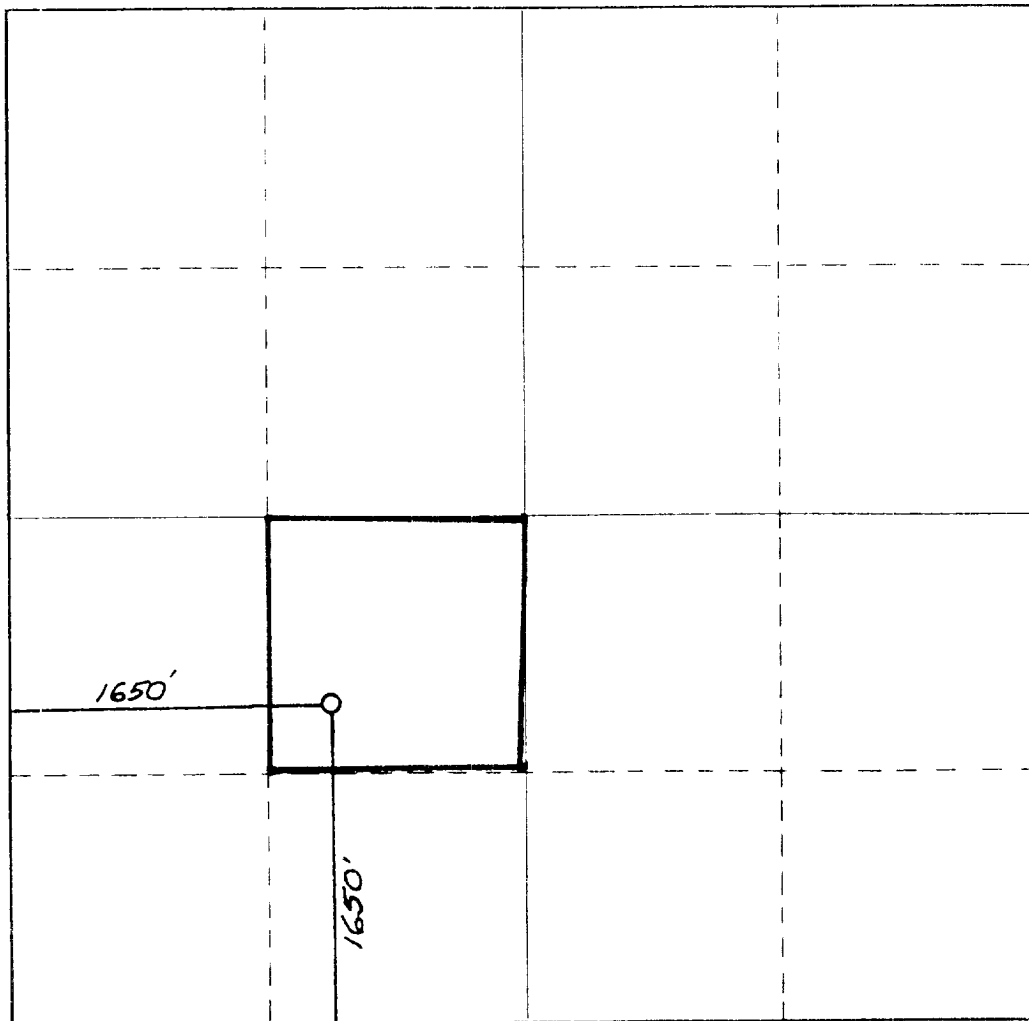
Owner YATES PETROLEUM CORPORATION			Lease Gissler AV		O. C. D.	Well No. 29
Tract Letter K	Section 23	Township 17 South	Range 25 East	County Eddy		
Actual Footage Location of Well:						
1650		feet from the South	1650		feet from the West	Line
Ground Level Elev. 3502.	Producing Formation SAN Andres		Pool Eagle Creek (SA)		Dedicated Acreage: 40 Acres	

1. Outline the acreage dedicated to the subject well by colored pencil or hatchure marks on the plat below.
2. If more than one lease is dedicated to the well, outline each and identify the ownership thereof (both as to working interest and royalty).
3. If more than one lease of different ownership is dedicated to the well, have the interests of all owners been consolidated by communitization, unitization, force-pooling, etc?

☐ Yes ☒ No If answer is "yes," type of consolidation _____

If answer is "no," list the owners and tract descriptions which have actually been consolidated. (Use reverse side of this form if necessary.) _____

No allowable will be assigned to the well until all interests have been consolidated (by communitization, unitization, forced-pooling, or otherwise) or until a non-standard unit, eliminating such interests, has been approved by the Commission.



CERTIFICATION

I hereby certify that the information contained herein is true and complete to the best of my knowledge and belief.

Name Cy Cowan
Position Regulatory Coordinator
Company Yates Petroleum Corp
Date 8-10-82

I hereby certify that the well location shown on this plat was plotted from field notes of actual surveys made by me or under my supervision, and that the same is true and correct to the best of my knowledge and belief.

Date Surveyed
August 7, 1982

Registered Professional Engineer and/or Land Surveyor

Dan R. Reddy

Certificate No.
NM PE&LS #5412

330 660 990 1320 1650 1980 2310 2640 2000 1500 1000 500 0

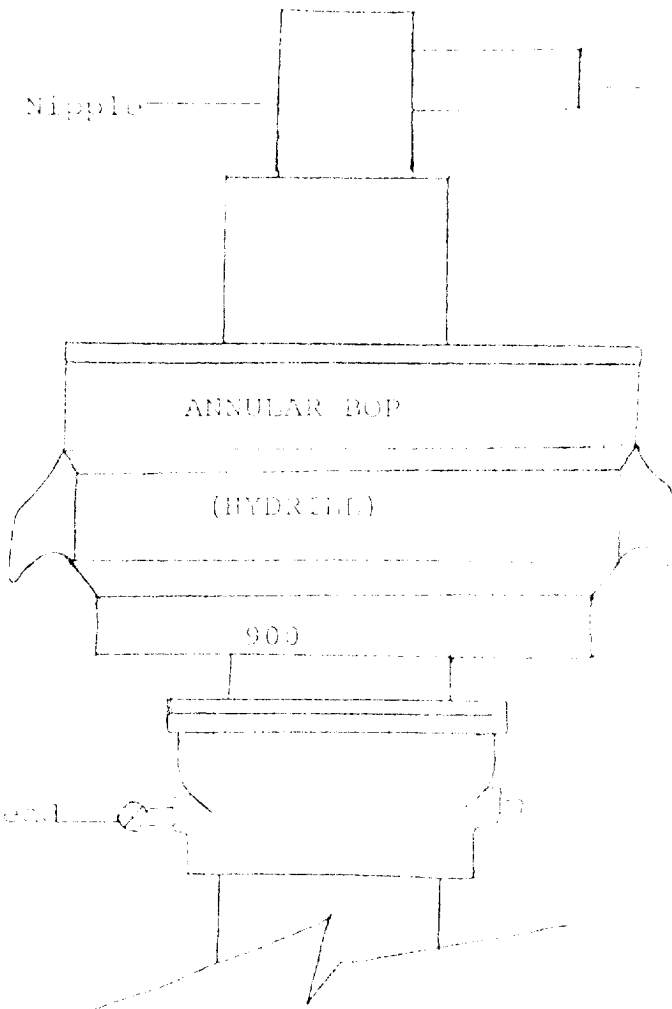
Drill Nipple

Flowline

RECEIVED

AUG 10 1982

O. C. D.
ARTESIA, OFFICE



Casinghead or Bradenhead

THE FOLLOWING CONSTITUTE MINIMUM BLOWOUT PREVENTER REQUIREMENTS

1. All preventers to be hydraulically operated with secondary manual controls installed prior to drilling out from under casing.
2. All connections from operating manifolds to preventers to be all steel. Hole or tube a minimum of one inch in diameter.
3. The available closing pressure shall be at least 15% in excess of that required with sufficient volume to operate the BOP's.
4. All connections to and from preventer to have a pressure rating equivalent to that of the BOP's.
5. Hole must be kept filled on trips below intermediate casing.