

UNITED STATES
DEPARTMENT OF THE INTERIOR
GEOLOGICAL SURVEY

APPLICATION FOR PERMIT TO DRILL, DEEPEN, OR PLUG BACK

1a. TYPE OF WORK

DRILL ☒DEEPEN ☐PLUG BACK ☐

b. TYPE OF WELL

OIL
WELL ☒GAS
WELL ☐

OTHER

SINGLE
ZONE ☐MULTIPLE
ZONE ☒

2. NAME OF OPERATOR

Yates Petroleum Corporation

3. ADDRESS OF OPERATOR

207 S. 4th Street, Artesia, New Mexico 88210

4. LOCATION OF WELL (Report location clearly and in accordance with any State requirements)

At surface

990 FSL and 2310 FWL

At proposed prod. zone

same

14. DISTANCE IN MILES AND DIRECTION FROM NEAREST TOWN OR POST OFFICE

Approximately 3 miles SW of Artesia

15. DISTANCE FROM PROPOSED*

LOCATION TO NEAREST
PROPERTY OR LEASE LINE, FT.
(Also to nearest drlg. unit line, if any)

330'

18. DISTANCE FROM PROPOSED LOCATION*

TO NEAREST WELL, DRILLING, COMPLETED,
OR APPLIED FOR, ON THIS LEASE, FT.

16. NO. OF ACRES IN LEASE

120

19. PROPOSED DEPTH

appr. 1500'

21. ELEVATIONS (Show whether DF, RT, GR, etc.)

3517.0' GL

23.

PROPOSED CASING AND CEMENTING PROGRAM

SIZE OF HOLE	SIZE OF CASING	WEIGHT PER FOOT	SETTING DEPTH	QUANTITY OF CEMENT
14 1/2"	10 3/4"	32#	appr. 350'	300 sx circulated
9 1/2"	7"	20#	appr. 1150'	800 sx circulated
6 1/4"	4 1/2"	10.5#	TD 1500'	180 sx circulated

Propose to drill a San Andres Test. Approximately 350' of 10 3/4" casing will be run if needed, and cemented to the surface to shut off gravel and caving, 7" casing will be run 100' below the Artesian Zone, cemented to surface. Production string will be run and cemented, perforated and sand frac'd for completion.

MUD PROGRAM: Fresh water mud w/LCM from surface to 1150', FW to TD.

BOP PROGRAM: BOP's to be installed on 7" casing and tested daily.

IN ABOVE SPACE DESCRIBE PROPOSED PROGRAM: If proposal is to deepen or plug back, give data on present productive zone and proposed new productive zone. If proposal is to drill or deepen directionally, give pertinent data on subsurface locations and measured and true vertical depths. Give blowout preventer program, if any.

24.

SIGNED

(This space for Federal or State office use)

PERMIT NO.

APPROVED BY

CONDITIONS OF APPROVAL, IF ANY:

TITLE

Regulatory Coordinator

DATE 8/6/82

APPROVAL DATE

TITLE

DATE

APPROVED
(Orig. Sgd.) GEORGE H. STEWART
AUG 18 1982JAMES A. GILLHAM
DISTRICT SUPERVISOR

5. LEASE DESIGNATION AND SERIAL NO.

NM-0219603-A

6. IF INDIAN, ALLOTTEE OR TRIBE NAME

7. UNIT AGREEMENT NAME

8. FARM OR LEASE NAME

Federal "BW"

9. WELL NO.

14

10. FIELD AND POOL, OR WILDCAT

Eagle Creek/SA

11. SEC., T., R., M., OR BLK.
AND SURVEY OR AREA

Sec. 22-T17S-R25E

12. COUNTY OR PARISH

Eddy

NM

OIL & GAS

U.S. GEOLOGICAL SURVEY

ROSWELL, NEW MEXICO

17. NO. OF ACRES ASSIGNED
TO THIS WELL

40

20. ROTARY OR CABLE TOOLS

Rotary

22. APPROX. DATE WORK WILL START*

ASAP

Revised 8/1
API + NS Books
8-26-82

NEW MEXICO OIL CONSERVATION COMMISSION
WELL LOCATION AND ACREAGE DEDICATION PLAT

Form C-102
Supersedes C-128
Effective 1-1-65

All distances must be from the outer boundaries of the Section.

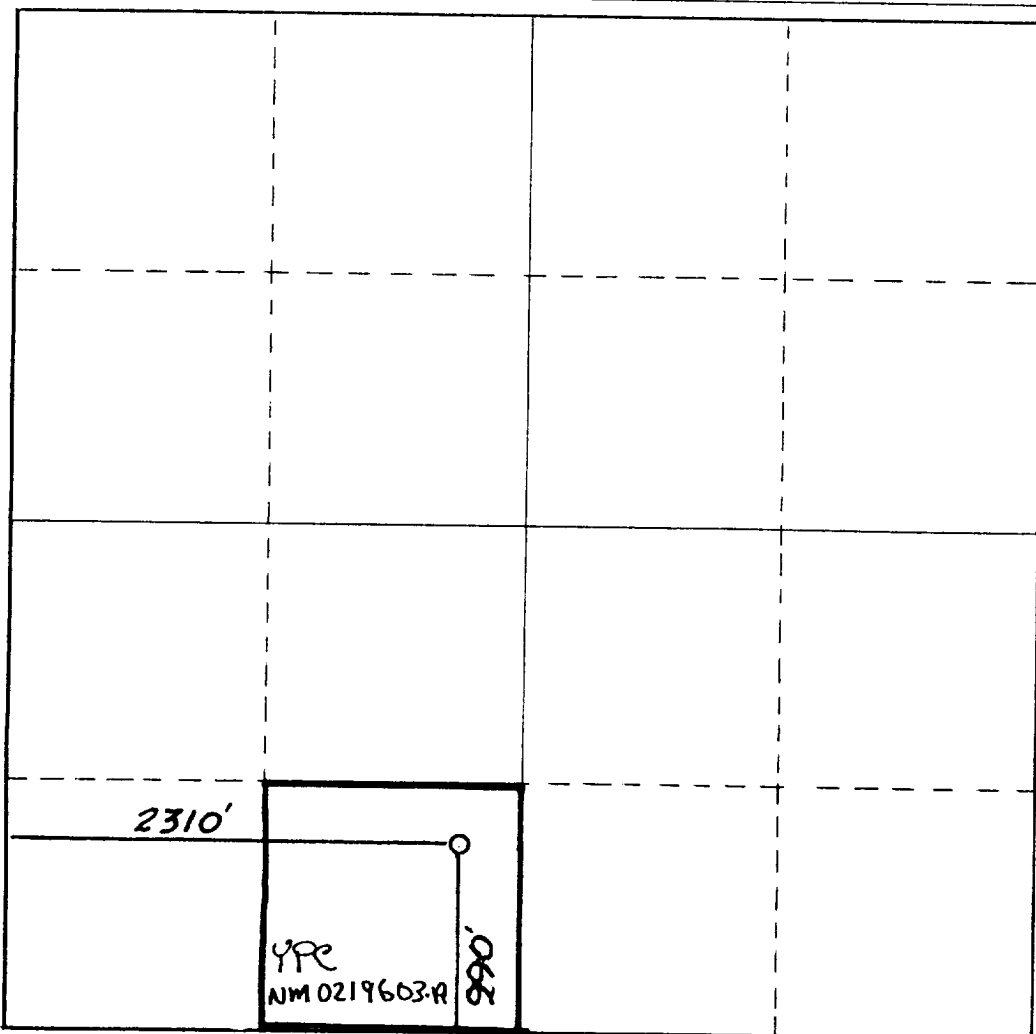
Operator YATES PETROLEUM CORPORATION			Lease Federal BW		Well No. 14
Unit Letter N	Section 22	Township 17 South	Range 25 East	County Eddy	
Actual Footage Location of Well: 990 feet from the South line and 2310 feet from the West line					
Ground Level Elev. 3532.	Producing Formation SAN Andres		Pool Eagle Creek (SA)		Dedicated Acreage: 40 Acres

1. Outline the acreage dedicated to the subject well by colored pencil or hachure marks on the plat below.
2. If more than one lease is dedicated to the well, outline each and identify the ownership thereof (both as to working interest and royalty).
3. If more than one lease of different ownership is dedicated to the well, have the interests of all owners been consolidated by communitization, unitization, force-pooling, etc?

☐ Yes ☒ No If answer is "yes," type of consolidation _____

If answer is "no," list the owners and tract descriptions which have actually been consolidated. (Use reverse side of this form if necessary.) _____

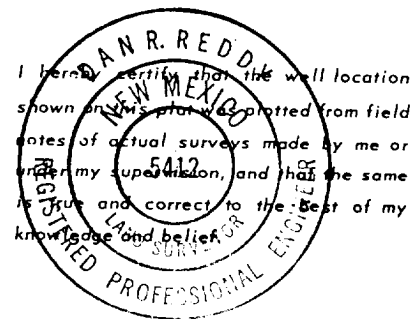
No allowable will be assigned to the well until all interests have been consolidated (by communitization, unitization, forced-pooling, or otherwise) or until a non-standard unit, eliminating such interests, has been approved by the Commission.



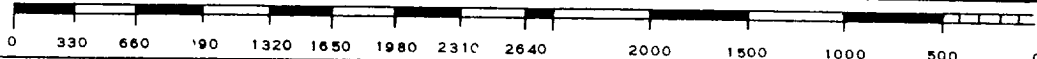
CERTIFICATION

I hereby certify that the information contained herein is true and complete to the best of my knowledge and belief.

Cy Cowan
Name
Cy Cowan
Position
Regulatory Coordinator
Company
YATES Petroleum Corp
Date
8-6-82



Date Surveyed
August 7, 1982
Registered Professional Engineer
and/or Land Surveyor
Dan R. Reddy
Certificate No.
NM PE&LS #5412



YATES PETROLEUM CORPORATION

Federal "BW" #14

990 FSL and 2310 FWL

Sec. 22-T17s-R25e

In conjunction with Form 9-331C, Application for Permit to Drill subject well, Yates Petroleum Corporation submits the following ten items of pertinent information in accordance with USGS requirements.

1. The geologic surface formation is Quaternary alluvium.
2. The estimated tops of geologic markers are as follows:
TD 1500'

_____.
3. The estimated depths at which anticipated water, oil or gas formations are expected to be encountered:

Water: Apprx 150'-250' and 700'-950'

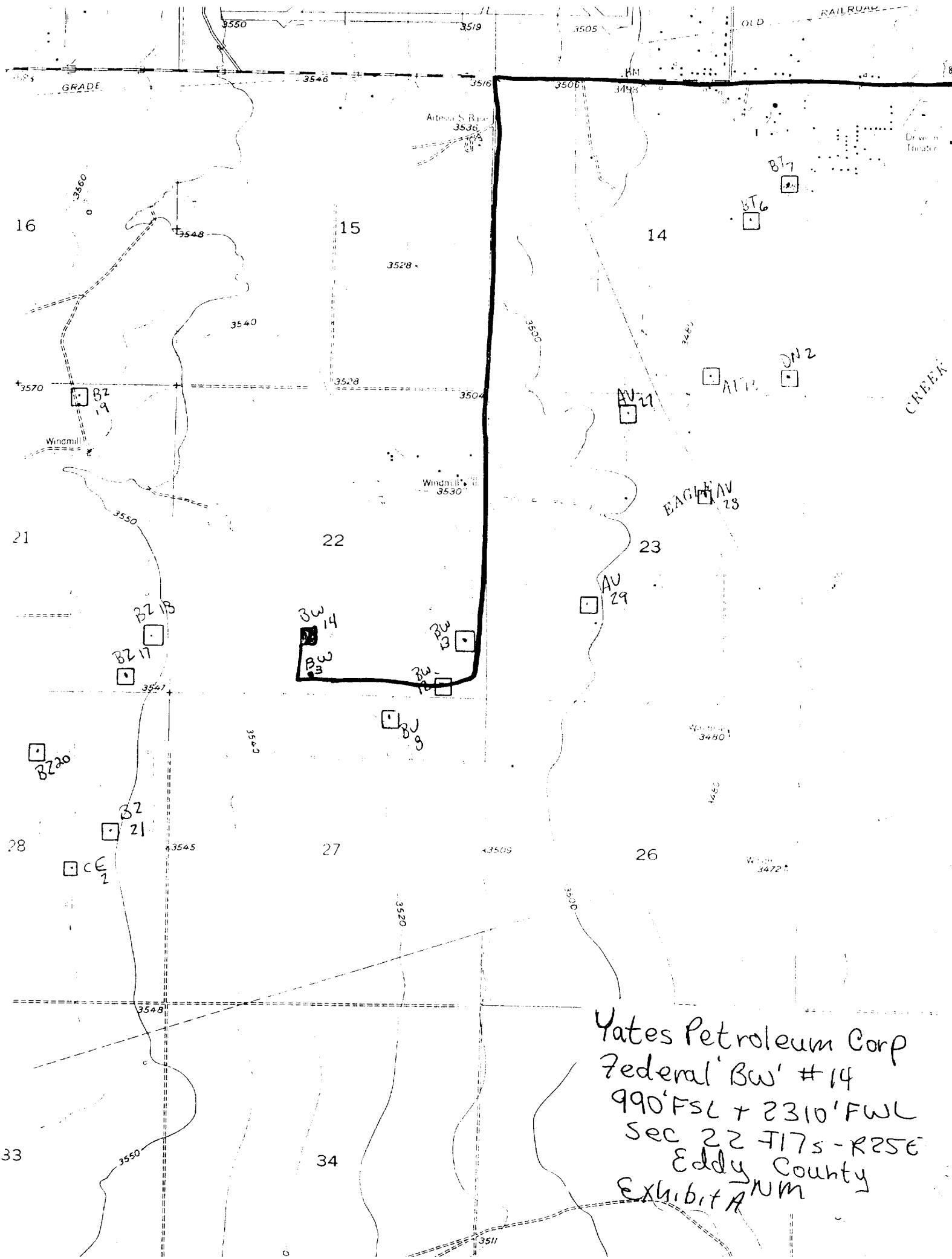
Oil or Gas: San Andres 1300'-1450'
_____.
4. Proposed Casing Program: See Form 9-331C.
5. Pressure Control Equipment: See Form 9-331C and Exhibit B.
6. Mud Program: See Form 9-331C.
7. Auxiliary Equipment: Kelly Cock; pit level indicators and flow sensor equipment;
sub with full-opening valve on floor, drill pipe connection.
8. Testing, Logging and Coring Program:

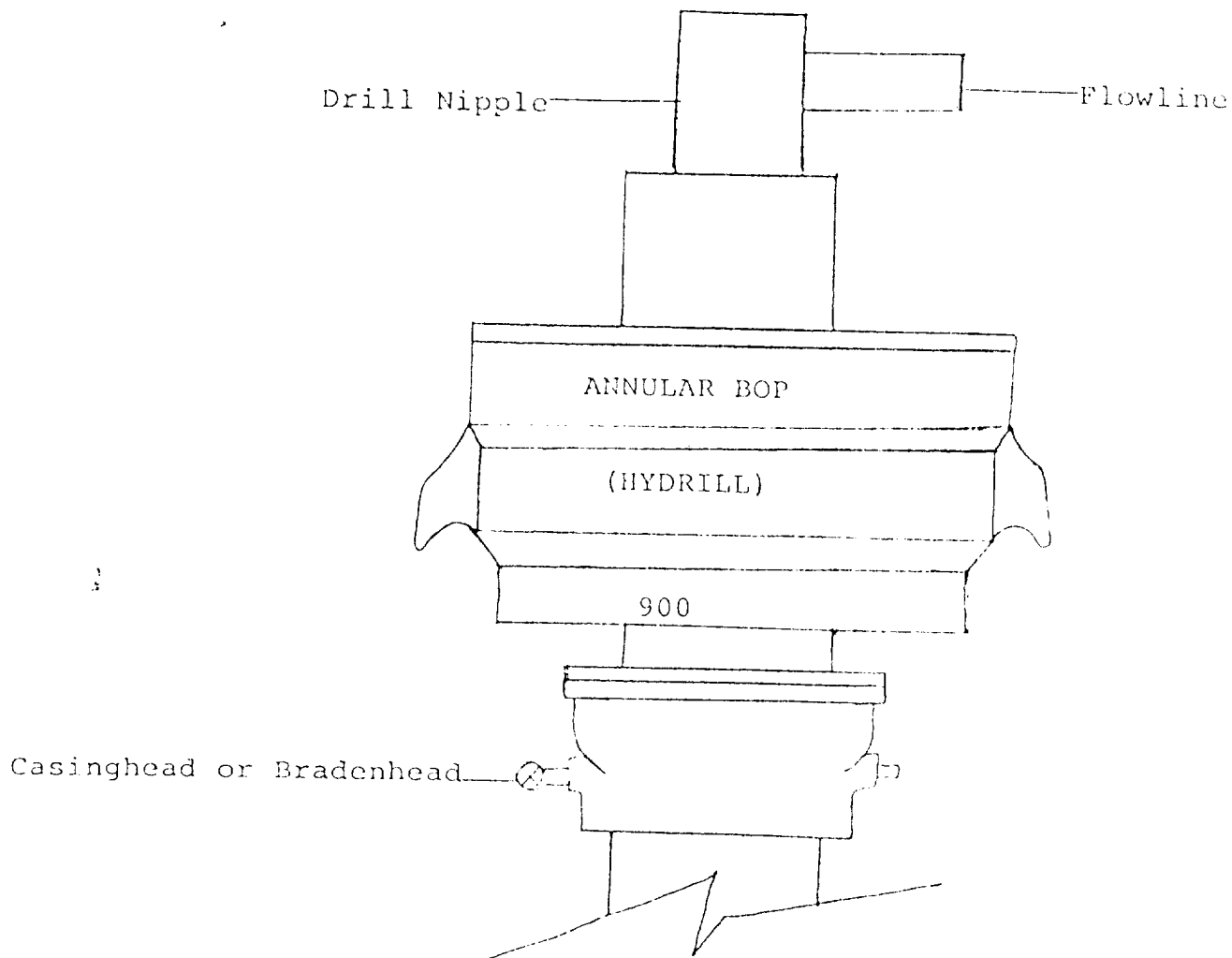
Samples: 10' Samples from under surface

DST's: none

Coring: none

Logging: GR-Neutron
_____.
9. No abnormal pressures or temperatures are anticipated.
10. Anticipated starting date: As soon as possible after approval.





THE FOLLOWING CONSTITUTE MINIMUM BLOWOUT PREVENTER REQUIREMENTS

1. All preventers to be hydraulically operated with secondary manual controls installed prior to drilling out from under casing.
2. All connections from operating manifolds to preventers to be all steel. Hole or tube a minimum of one inch in diameter.
3. The available closing pressure shall be at least 15% in excess of that required with sufficient volume to operate the BOP's.
4. All connections to and from preventer to have a pressure rating equivalent to that of the BOP's.
5. Hole must be kept filled on trips below intermediate casing.



207 SOUTH FOURTH STREET
ARTESIA, NEW MEXICO 88210

TELEPHONE (505) 748-1331

S. P. YATES
PRESIDENT
MARTIN YATES, III
VICE PRESIDENT
JOHN A. YATES
VICE PRESIDENT
B. W. HARPER
SEC. TREAS.

August 6, 1982

USGS
Federal Building
Roswell, New Mexico 88201

ATTENTION: Mr. George Stewart

Gentlemen:

RE: Federal "BW" #14

Yates Petroleum Corporation has submitted an application to drill a well on surface owned by Bill Gissler, P.O. Box 987, Artesia, New Mexico 88210. This well is located in Section 22, T17s, R25e, 990' FSL and 2310' FWL.

In an on-site visit with Mr. Gissler, it was agreed that we would compensate him monetarily for the surface damages incurred. After drilling has been completed the pit area will be leveled after it is dry and along with the pad will be left to reseed naturally.

Sincerely,

Yates Petroleum Corporation

Cy Cowan
Regulatory Coordinator

CC/ks1