

SEP 10 1982

O. C. D.

ARTESIA, OFFICE

30-015-24264
Form C-101
Revised 10-1-78

NO. OF COPIES RECEIVED	
DISTRIBUTION	
SANTA FE	
FILE	✓
U.S.G.S.	
LAND OFFICE	
OPERATOR	

APPLICATION FOR PERMIT TO DRILL, DEEPEN, OR PLUG BACK

1. Type of Work

2. Type of Well

DRILL ☒DEEPEN ☐PLUG BACK ☐OIL WELL ☒GAS WELL ☐OTHER ☐SINGLE ZONE ☐MULTIPLE ZONE ☐

Name of Operator

Yates Petroleum Corporation ✓

Address of Operator

207 S. 4th, Artesia, New Mexico 88210

Location of Well

UNIT LETTER J

LOCATED 1650

FEET FROM THE South LINE

2310

FEET FROM THE

East

LINE OF SEC. 23

TWP. 17S RGE. 25E NMPM

3. Unit Agreement Name

4. Farm or Lease Name

Mitchell "IN"

5. Well No.

3

6. Field and Pool, or Wildcat

Eagle Creek/SA

7. County

Eddy

8. Elevations (Show whether DF, KI, etc.)

3493' GL

9. 21A. Kind & Status Plug. Bond

Blanket

10. 19. Proposed Depth

appr. 1500'

11. 19A. Formation

San Andres

12. 20. Rotary or C.T.

Rotary

13. 21B. Drilling Contractor

LaRue #2

14. 22. Approx. Date Work will start

ASAP

PROPOSED CASING AND CEMENT PROGRAM

SIZE OF HOLE	SIZE OF CASING	WEIGHT PER FOOT	SETTING DEPTH	SACKS OF CEMENT	EST. TOP
14 1/2"	10 3/4"	30#	appr. 350'	200 sx	circulated
9 1/2"	7"	23#	appr. 1150'	700 sx	circulated
6 1/2"	4 1/2"	9.5#	appr. 1500'	150 sx	circulated

We propose to drill a San Andres test with approximately 350' of surface casing to shut off gravel and caving. 7" intermediate casing will be run and set 100' below the Artesian Zone and if commercial production is encountered a string will be run, perforated and stimulated for production.

MUD PROGRAM: FW gel and LCM to 1140' (or dry drill) water to TD.

BOP PROGRAM: BOP's will be installed on 7" casing and tested daily.

APPROVAL VALID FOR 180 DAYS
PERMIT EXPIRES 3-14-83
UNLESS DRILLING UNDERWAY

ABOVE SPACE DESCRIBE PROPOSED PROGRAM: IF PROPOSAL IS TO DEEPEN OR PLUG BACK, GIVE DATA ON PRESENT PRODUCTIVE ZONE AND PROPOSED NEW PRODUCTION ZONE. GIVE BLOWOUT PREVENTER PROGRAM, IF ANY.

I hereby certify that the information above is true and complete to the best of my knowledge and belief.

Signed For Bearden Title Regulatory Coordinator Date 9/10/82

(This space for State Use)

APPROVED BY Mike Wilkins TITLE OIL AND GAS INSPECTOR

DATE SEP 15 1982

CONDITIONS OF APPROVAL, IF ANY:

Notify N.M.O.C.C. in sufficient
time to witness cementing

the 7 casing

NEW MEXICO OIL CONSERVATION COMMISSION
WELL LOCATION AND ACREAGE DEDICATION PLAT

Form C-102
Supersedes C-128
Effective 1-1-65

All distances must be from the outer boundaries of the Section.

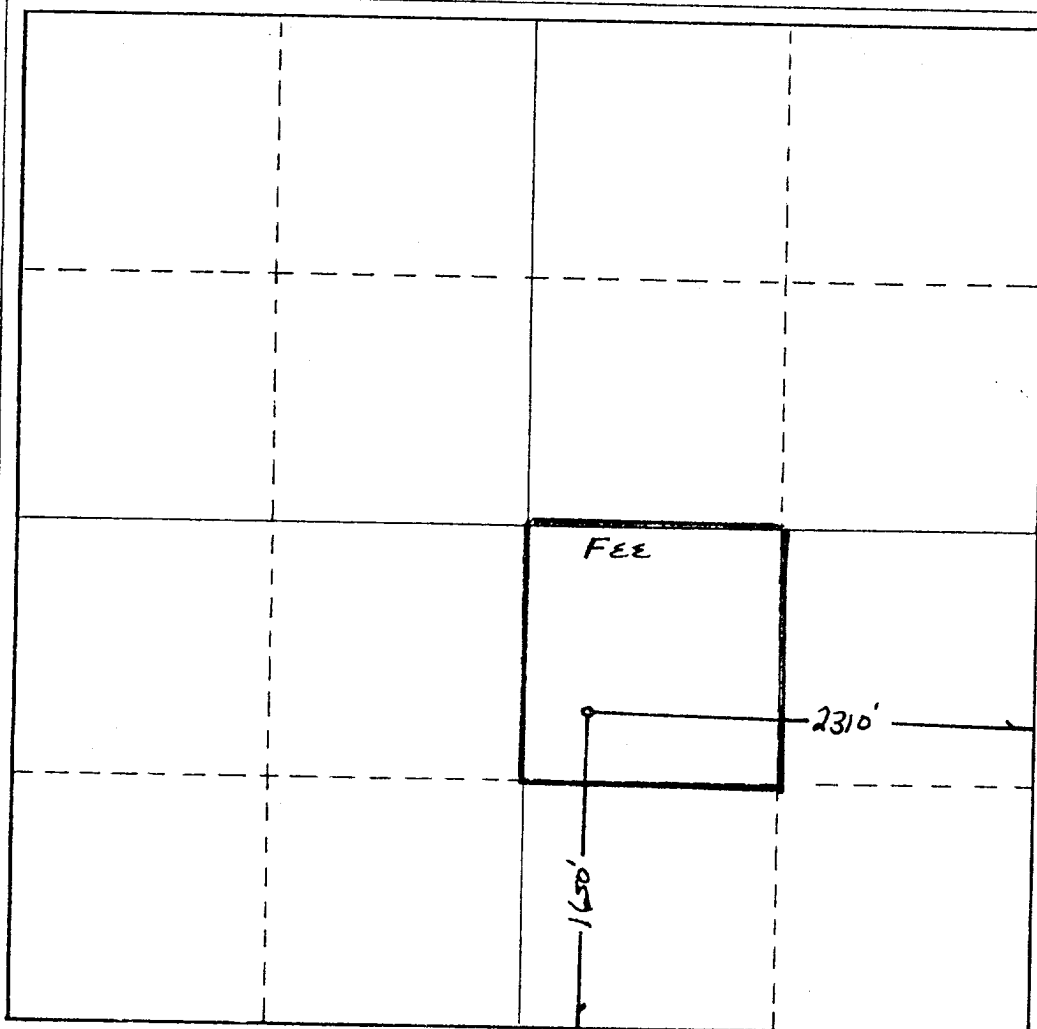
Operator YATES PETROLEUM CORPORATION			Lease Mitchell "IN"		Well No. 3
Unit Letter J	Section 23	Township 17 South	Range 25 East	County Eddy	
Actual Footage Location of Well: 1650 feet from the South line and 2310 feet from the East line Ground Level Elev. 3493' Producing Formation San Andres Pool Eagle Creek S.A. Dedicated Acreage: 40 Acres					

- Outline the acreage dedicated to the subject well by colored pencil or hachure marks on the plat below.
- If more than one lease is dedicated to the well, outline each and identify the ownership thereof (both as to working interest and royalty).
- If more than one lease of different ownership is dedicated to the well, have the interests of all owners been consolidated by communitization, unitization, force-pooling, etc?

☐ Yes ☐ No If answer is "yes," type of consolidation _____

If answer is "no," list the owners and tract descriptions which have actually been consolidated. (Use reverse side of this form if necessary.) _____

No allowable will be assigned to the well until all interests have been consolidated (by communitization, unitization, forced-pooling, or otherwise) or until a non-standard unit, eliminating such interests, has been approved by the Commission.



CERTIFICATION

I hereby certify that the information contained herein is true and complete to the best of my knowledge and belief.

Ken Beardemphl
Name

Ken Beardemphl

Position

Regulatory Coordinator

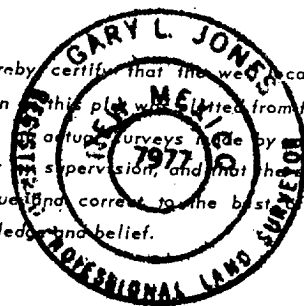
Company

Yates Petroleum Corp.

Date

9/10/82

I hereby certify that the well location shown on this plat was obtained from field notes, actual surveys made by me or under my supervision, and that the same is true and correct to the best of my knowledge and belief.



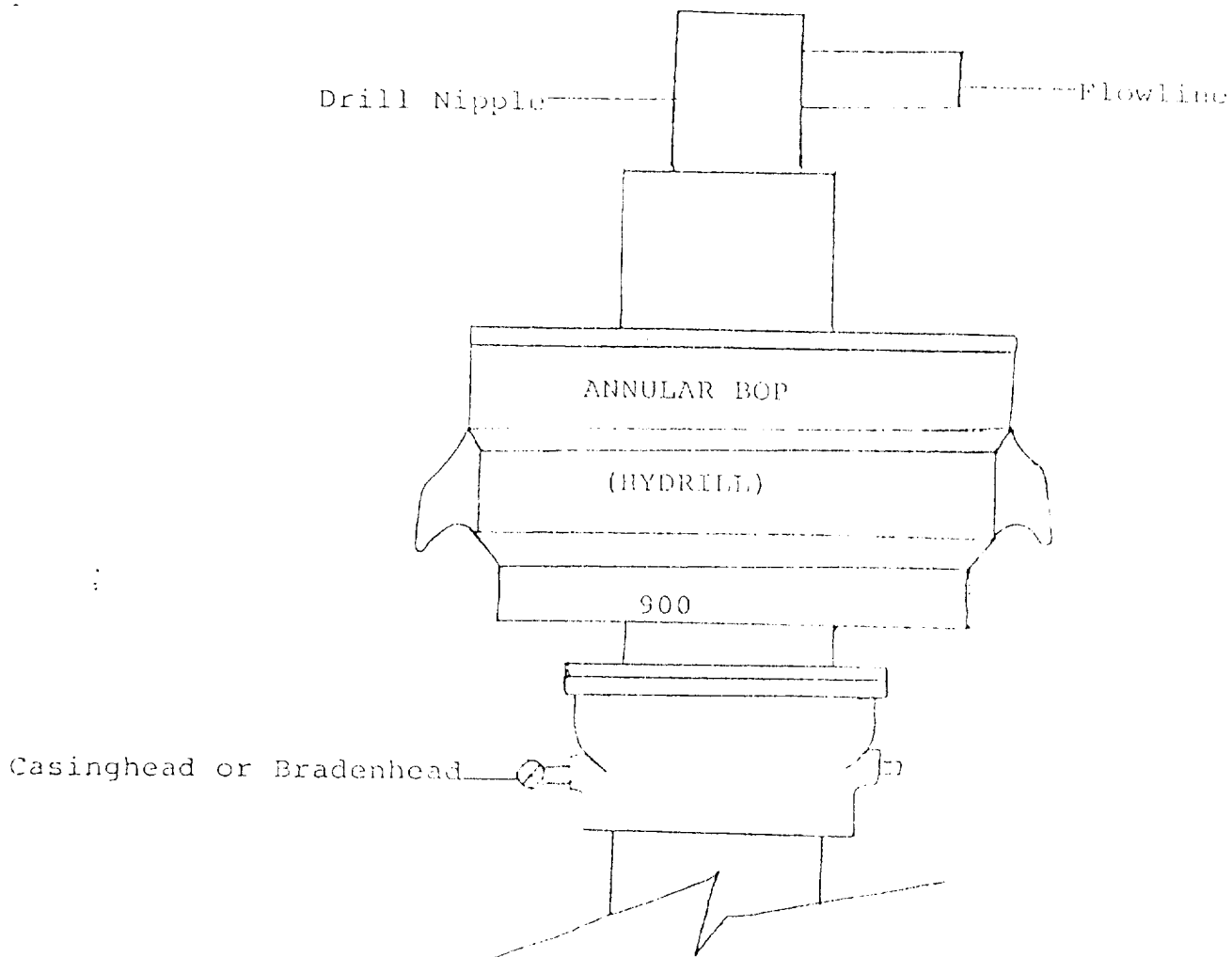
Date Surveyed

September 9, 1982

Registered Professional Engineer
and/or Land Surveyor

Sam A. Jones
Certificate No.

7977



THE FOLLOWING CONSTITUTE MINIMUM BLOWOUT PREVENTER REQUIREMENTS

1. All preventers to be hydraulically operated with secondary manual controls installed prior to drilling out from under casing.
2. All connections from operating manifolds to preventers to be all steel. Hole or tube a minimum of one inch in diameter.
3. The available closing pressure shall be at least 15% in excess of that required with sufficient volume to operate the BOP's.
4. All connections to and from preventer to have a pressure rating equivalent to that of the BOP's.
5. Hole must be kept filled on trips below intermediate casing.