

STATE OF NEW MEXICO  
ENERGY AND MINERALS DEPARTMENT

OIL CONSERVATION DIVISION  
P.O. BOX 2088  
SANTA FE, NEW MEXICO 87501

30-015-24270  
Form C-101  
Revised 1-1-65

NO. OF COPIES RECEIVED	
DISTRIBUTION	
SANTA FE	✓
LE	✓
S.G.S.	✓
AND OFFICE	✓
OPERATOR	✓

RECEIVED

SEP 17 1982

O.C.D.  
ARTESIA, OFFICE

APPLICATION FOR PERMIT TO DRILL, DEEPEN, OR PLUG BACK

TYPE OF WORK: DRILL ☒ DEEPEN ☐ PLUG BACK ☐

TYPE OF WELL: OIL WELL ☒ GAS WELL ☐ OTHER ☐ SINGLE ZONE ☐ MULTIPLE ZONE ☐

Name of Operator: Read & Stevens, Inc. ✓

Address of Operator: P.O. Box 1518, Roswell, NM 88201

Location of Well: UNIT LETTER F LOCATED 1980 FEET FROM THE North LINE  
1980 FEET FROM THE West LINE OF SEC. 13 TWP. 16S RGE. 31E NMPM

19. Proposed Depth: 4250'

19A. Formation: Penrose

20. Rotary or C.T.: Rotary

Elevations (Show whether DF, RT, etc.): 4393.5' GR

21A. Kind & Status Plug Bond: Statewide

21B. Drilling Contractor: Sierra Drilg. Co. Rig #5

22. Approx. Date Work will start: November 5, 1982

5A. Indicate Type of Lease: STATE ☒ FEE ☐

5. State Oil & Gas Lease No.: E-8560

7. Unit Agreement Name: -

8. Farm or Lease Name: Amoco Mesa

9. Well No.: 1

10. Field and Pool, or Wildcat Und. Bunker Hill Penrose

12. County: Eddy

PROPOSED CASING AND CEMENT PROGRAM

SIZE OF HOLE	SIZE OF CASING	WEIGHT PER FOOT	SETTING DEPTH	SACKS OF CEMENT	EST. TOP
11"	8 5/8"	24#	1300'	500sx	Circ.
7 7/8"	4 1/2"	10.5#	4250'	600sx	3000'

We propose to drill and test the Penrose Sand formation. Approximately 1300' of 8 5/8" surface casing will be set to protect fresh water sands. Cement will be circulated. If the well is commercial, 4 1/2" production casing will be run and cemented to cover the pay zone with at least 600' of cement.

Mud Program: Native mud to 1300', brine 1300' to 3500', brine and starch 3500' to TD.

BOP Program: One 11" 5000psi WP Shaffer Type "LWS" Hydraulic operated, double BOP w/NL-Shaffer D05040-3S BOP control unit with 40 gal capacity.

APPROVAL VALID FOR 180 DAYS  
PERMIT EXPIRES 3-21-83  
UNLESS DRILLING UNDERWAY

ABOVE SPACE DESCRIBE PROPOSED PROGRAM: IF PROPOSAL IS TO DEEPEN OR PLUG BACK, GIVE DATA ON PRESENT PRODUCTIVE ZONE AND PROPOSED NEW PRODUCTIVE ZONE. GIVE BLOWOUT PREVENTER PROGRAM, IF ANY.

I hereby certify that the information above is true and complete to the best of my knowledge and belief.

SIGNED: B. Hobbs TITLE: Drilling & Production Manager DATE: September 16, 1982

(This space for State Use)

APPROVED BY: Mike Williams TITLE: OIL AND GAS INSPECTOR DATE: SEP 21 1982

CONDITIONS OF APPROVAL, IF ANY:

**MEXICO OIL CONSERVATION COMMISSION  
WELL LOCATION AND ACREAGE DEDICATION PLAT**

Form C-102  
Supersedes C-128  
Effective 1-1-65

All distances must be from the outer boundaries of the Section

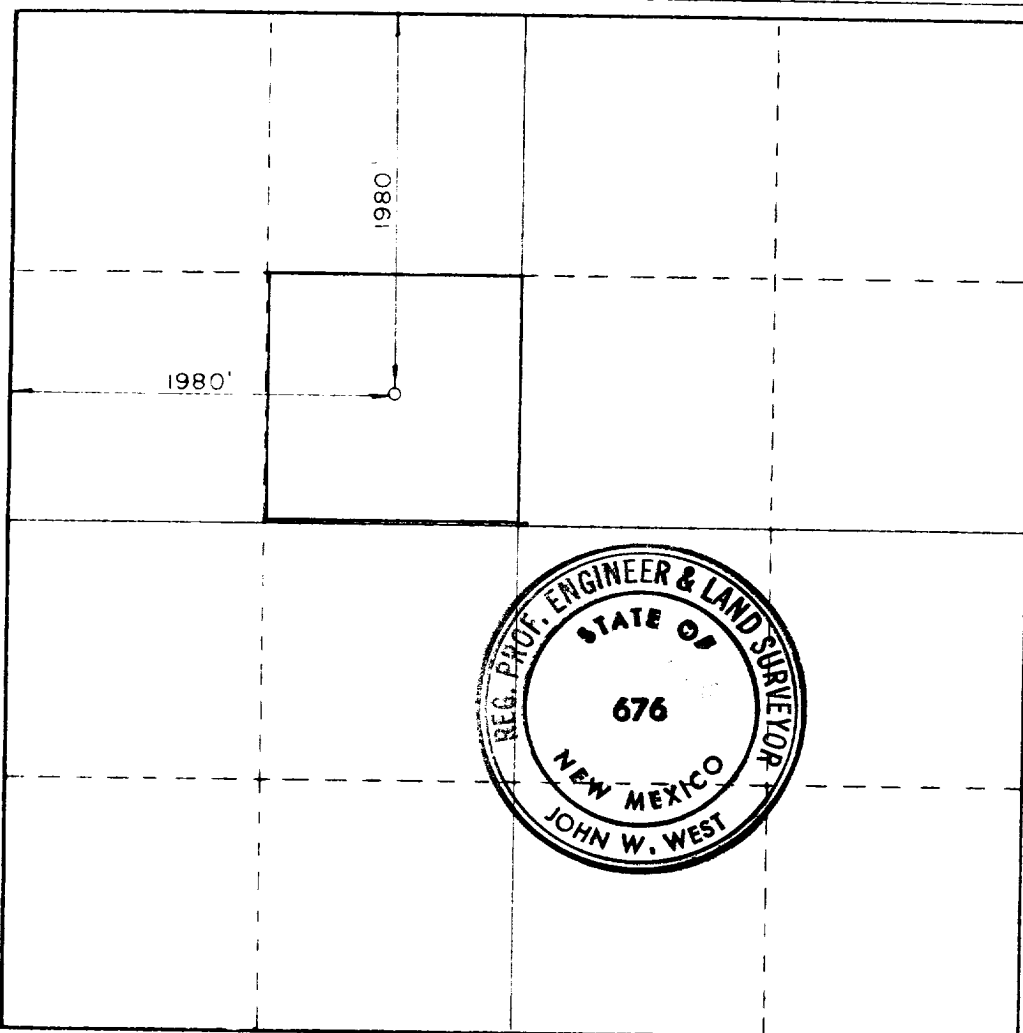
Operator <b>READ &amp; STEVENS, INC.</b>			Lease <b>AMOCO MESA</b>		Well No. <b>1</b>
Tract Letter <b>F</b>	Section <b>13</b>	Township <b>16 S</b>	Range <b>31 E</b>	County <b>EDDY</b>	
Actual Well Location of Well: <b>1980</b> feet from the <b>NORTH</b> line and <b>1980</b> feet from the <b>WEST</b> line					
Ground Level Elev. <b>4393.5</b>	Producing Formation <b>Penrose</b>		Pool <b>Und. Bunker Hill Penrose</b>	Estimated Acreage <b>40</b> Acres	

1. Outline the acreage dedicated to the subject well by colored pencil or hatchure marks on the plat below.
2. If more than one lease is dedicated to the well, outline each and identify the ownership thereof (both as to working interest and royalty).
3. If more than one lease of different ownership is dedicated to the well, have the interests of all owners been consolidated by communitization, unitization, force-pooling, etc?

☐ Yes    ☐ No    If answer is "yes," type of consolidation \_\_\_\_\_

If answer is "no," list the owners and tract descriptions which have actually been consolidated (Use reverse side of this form if necessary.) \_\_\_\_\_

No allowable will be assigned to the well until all interests have been consolidated (by communitization, unitization, forced-pooling, or otherwise) or until a non-standard unit, eliminating such interests, has been approved by the Commission.



**CERTIFICATION**

*I hereby certify that the information contained herein is true and complete to the best of my knowledge and belief.*

*Susie Russell*

Name  
**Susie Russell**

Position  
**Authorized Agent**

Company  
**Read & Stevens, Inc.**

Date  
**September 16, 1982**

*I hereby certify that the well location shown on this plat was plotted from field notes of actual surveys made by me or under my supervision, and that the same is true and correct to the best of my knowledge and belief.*

Date Surveyed  
**AUGUST 27, 1982**

Registered Professional Engineer and/or Land Surveyor

*John W. West*

Certificate No. **JOHN W. WEST 676**  
**PATRICK A. ROMERO 8868**  
**Ronald J. Eidson 3239**

330 660 990 1320 1650 1980 2310 2640 2970 3300 3630 3960 4290 4620 4950 5280 5610 5940 6270 6600