

NO. OF COPIES RECEIVED	
DISTRIBUTION	
SANTA FE	
FILE	
U.S.G.S.	2
LAND OFFICE	
OPERATOR	

SEP 27 1982

O. C. D.

ARTESIA OFFICE

APPLICATION FOR PERMIT TO DRILL, DEEPEN, OR PLUG BACK

Type of Work
 Type of Well
 OIL WELL ☒ GAS WELL ☐ OTHER ☐
 DRILL ☒ DEEPEN ☐ PLUG BACK ☐
 SINGLE ZONE ☐ MULTIPLE ZONE ☐

Name of Operator
 Address of Operator
 Location of Well
 UNIT LETTER N LOCATED 330 FEET FROM THE South LINE

1650 FEET FROM THE West LINE OF SEC. 14 TWP. 17S RGE. 25E NMPM

5A. Indicate Type of Lease
 STATE ☐ FEE ☒
 5. State Oil & Gas Lease No.
 7. Unit Agreement Name
 8. Farm or Lease Name
 Jackson "AT"
 9. Well No.
 14
 10. Field and Pool, or Wildcat
 Eagle Creek SA
 12. County
 Eddy

19. Proposed Depth
 Appr. 1500'
 19A. Formation
 San Andres
 20. Rotary or C.T.
 Rotary
 Elevations (Show whether DF, KT, etc.)
 3495' GL
 21A. Kind & Status Plug. Bond
 Blanket
 21B. Drilling Contractor
 L&M #2
 22. Approx. Date Work will start
 ASAP

PROPOSED CASING AND CEMENT PROGRAM

SIZE OF HOLE	SIZE OF CASING	WEIGHT PER FOOT	SETTING DEPTH	SACKS OF CEMENT	EST. TOP
14 1/2"	10 3/4"	30#	appr. 340'	200 sx	circulated
9 1/2"	7"	28#	appr. 1190'	400 sx	circulated
6 1/4"	4 1/2"	9.5#	appr. 1500'	125 sx	circulated

We propose to drill a San Andres test with approximately 340' of 10 3/4" surface casing to shut off gravel and cavings. 7" intermediate casing will be run and set 100' below the Artesian Zone and if commercial production is encountered, a string will be run, perforated and stimulated for production.

MUD PROGRAM: FW gel/LCM to 340' (or dry drill), water to TD.

BOP PROGRAM: BOP's will be installed on 7" casing & tested daily.

APPROVAL VALID FOR 180 DAYS
 PERMIT EXPIRES 3-28-83
 UNLESS DRILLING UNDERWAY

BOVE SPACE DESCRIBE PROPOSED PROGRAM; IF PROPOSAL IS TO DEEPEN OR PLUG BACK, GIVE DATA ON PRESENT PRODUCTIVE ZONE AND PROPOSED NEW PRODUCTIVE ZONE. GIVE BLOWOUT PREVENTER PROGRAM, IF ANY.

I hereby certify that the information above is true and complete to the best of my knowledge and belief.

by Ken Barden Title Regulatory Coordinator Date 9/27/82
 (This space for State Use)

APPROVED BY Mike Walker TITLE OIL AND GAS INSPECTOR DATE SEP 24 1982

CONDITIONS OF APPROVAL, IF ANY:

Notify N.M.O.C.C. in sufficient
 time to witness cementing
 the 7 casing

N MEXICO OIL CONSERVATION COMMISSION
WELL LOCATION AND ACREAGE DEDICATION PLAT

Form C-102
Supersedes C-128
Effective 1-1-65

All distances must be from the outer boundaries of the Section.

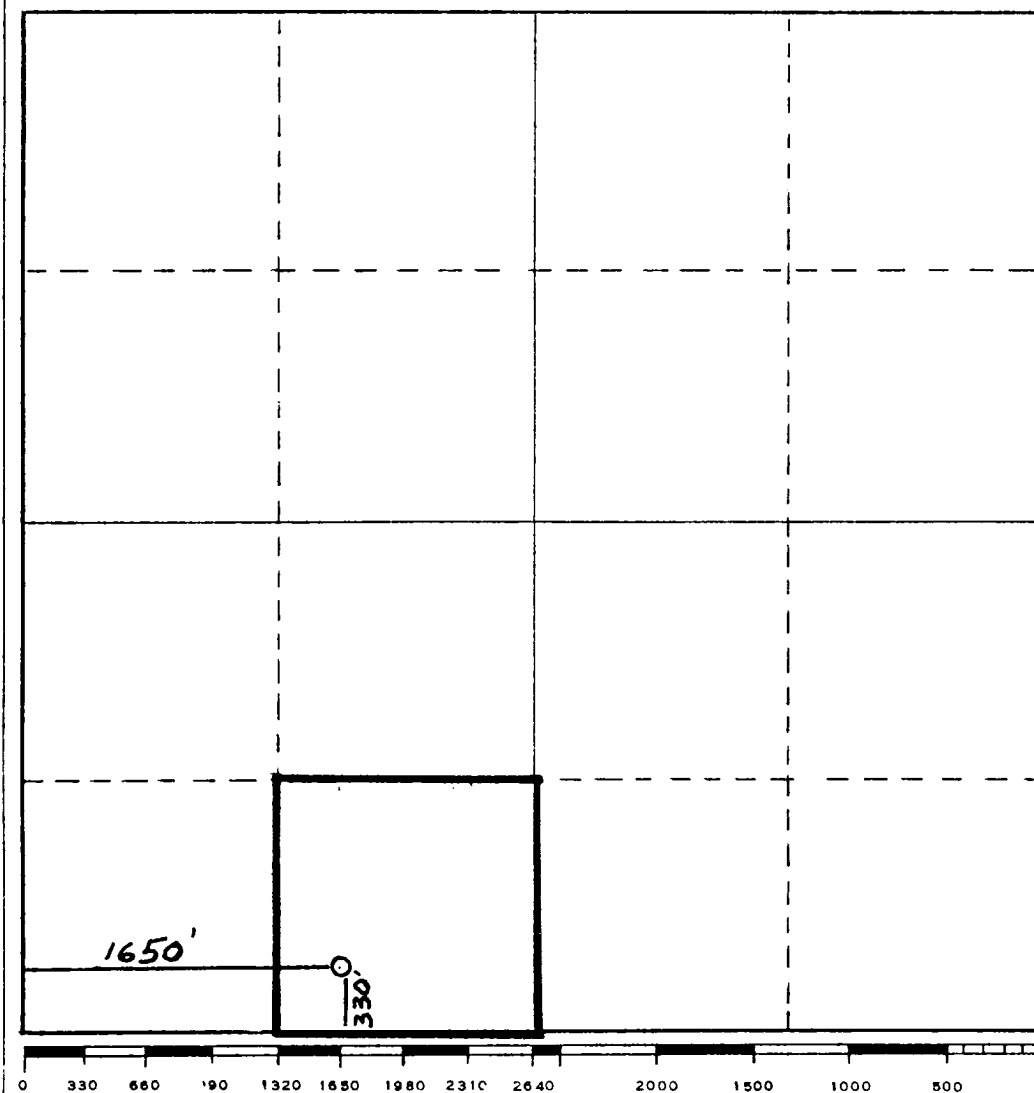
Operator YATES PETROLEUM CORPORATION			Lease Jackson AT		Well No. 14
Unit Letter N	Section 14	Township 17 South	Range 25 East	County Eddy	
Actual Footage Location of Well: 330 feet from the South line and 1650 feet from the West line					
Ground Level Elev. 3495.	Producing Formation San Andres	Pool Eagle Creek SA	Dedicated Acreage: 40 Acres		

1. Outline the acreage dedicated to the subject well by colored pencil or hachure marks on the plat below.
2. If more than one lease is dedicated to the well, outline each and identify the ownership thereof (both as to working interest and royalty).
3. If more than one lease of different ownership is dedicated to the well, have the interests of all owners been consolidated by communitization, unitization, force-pooling, etc?

☐ Yes ☐ No If answer is "yes," type of consolidation _____

If answer is "no," list the owners and tract descriptions which have actually been consolidated. (Use reverse side of this form if necessary.) _____

No allowable will be assigned to the well until all interests have been consolidated (by communitization, unitization, forced-pooling, or otherwise) or until a non-standard unit, eliminating such interests, has been approved by the Commission.



CERTIFICATION

I hereby certify that the information contained herein is true and complete to the best of my knowledge and belief.

Ken Beardemphl
Name

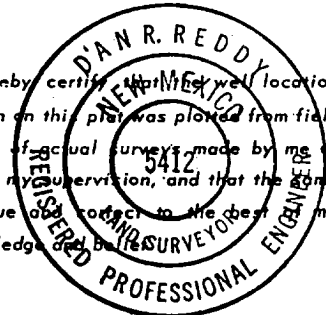
Ken Beardemphl
Position

Regulatory Coordinator
Company

Yates Petroleum Corp.
Date

9/27/82

I hereby certify that the well location shown on this plat was plotted from field notes of actual surveys made by me or under my supervision, and that the same is true and correct to the best of my knowledge.



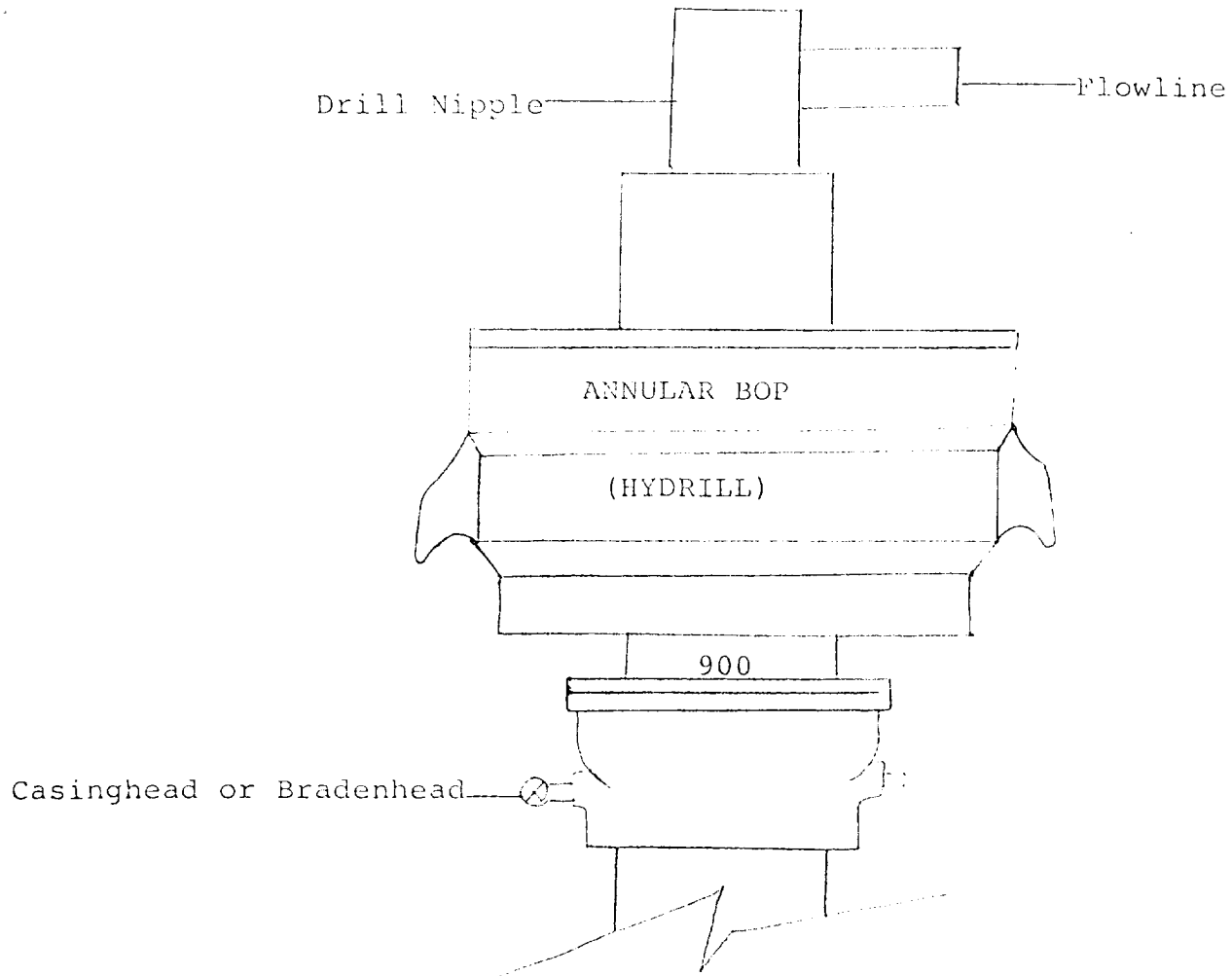
Date Surveyed
September 25, 1982

Registered Professional Engineer
and/or Land Surveyor

Dan R. Reddy
Certificate No.

NM PE&LS #5412

- E X H I D I L 13



THE FOLLOWING CONSTITUTE MINIMUM BLOWOUT PREVENTER REQUIREMENTS

1. All preventers to be hydraulically operated with secondary manual controls installed prior to drilling out from under casing.
2. All connections from operating manifolds to preventers to be all steel. Hole or tube a minimum of one inch in diameter.
3. The available closing pressure shall be at least 15% in excess of that required with sufficient volume to operate the BOP's.
4. All connections to and from preventer to have a pressure rating equivalent to that of the BOP's.
5. Hole must be kept filled on trips below intermediate casing.