

STATE OF NEW MEXICO
ENERGY AND MINERALS DEPARTMENT

L CONSERVATION DIVISION
P. O. BOX 2088
SANTA FE, NEW MEXICO 87501

SEP 27 1982

O. C. D.

ARTESIA, OFFICE

30-015-24276
Form C-101
Revised 10-1-78

NO. OF COPIES RECEIVED	
DISTRIBUTION	
SANTA FE	1
FILE	1
U.S.G.S.	2
LAND OFFICE	
OPERATOR	

APPLICATION FOR PERMIT TO DRILL, DEEPEN, OR PLUG BACK

Type of Work

DRILL ☒

DEEPEN ☐

PLUG BACK ☐

Type of Well

OIL WELL ☒

GAS WELL ☐

OTHER

SINGLE ZONE ☐

MULTIPLE ZONE ☐

Name of Operator

Yates Petroleum Corporation

Address of Operator

207 S. 4th, Artesia, New Mexico 88210

Location of Well

UNIT LETTER P

LOCATED 330

FEET FROM THE South

LINE

990

FEET FROM THE East

LINE OF SEC. 14

TWP. 17S RGE. 25E

NMPM

7. Unit Agreement Name

8. Farm or Lease Name

Winters "DN"

9. Well No.

3

10. Field and Pool, or Wildcat

Eagle Creek (SA)

12. County

Eddy

19. Proposed Depth

appr. 1500'

19A. Formation

San Andres

20. Rotary or C.T.

Rotary

Elevations (Show whether DF, KT, etc.)

3472' GL

21A. Kind & Status Plug. Bond

Blanket

21B. Drilling Contractor

L&M #2

22. Approx. Date Work will start

ASAP

PROPOSED CASING AND CEMENT PROGRAM

SIZE OF HOLE	SIZE OF CASING	WEIGHT PER FOOT	SETTING DEPTH	SACKS OF CEMENT	EST. TOP
14 1/2"	10 3/4"	30#	appr. 340'	200 sx	circulated
9 1/2"	7"	23#	appr. 1190'	400 sx	circulated
6 1/4"	4 1/2"	9.5#	appr. 1500'	125 sx	circulated

We propose to drill a San Andres test with approximately 340' of surface casing to shut off gravel and caving. 7" intermediate casing will be run and set 200' below the Artesian Zone and if commercial production is encountered, a string will be run, perforated and stimulated for production.

MUD PROGRAM: FW gel and LCM to 1190 (or dry drill), water to TD.

BOP PROGRAM: BOP's will be installed on 7" casing and tested daily.

APPROVAL VALID FOR 180 DAYS
PERMIT EXPIRES 3-28-83
UNLESS DRILLING UNDERWAY

ABOVE SPACE DESCRIBE PROPOSED PROGRAM; IF PROPOSAL IS TO DEEPEN OR PLUG BACK, GIVE DATA ON PRESENT PRODUCTIVE ZONE AND PROPOSED NEW PRODUCE ZONE. GIVE BLOWOUT PREVENTER PROGRAM, IF ANY.

I hereby certify that the information above is true and complete to the best of my knowledge and belief.

Signed Ken Beardsley Title Regulatory Coordinator Date 9/27/82

(This space for State Use)

APPROVED BY Mike Williams TITLE OIL AND GAS INSPECTOR

DATE SEP 24 1982

CONDITIONS OF APPROVAL, IF ANY:

Notify N.M.O.C.C. in sufficient
time to witness cementing

the 7 casing

N MEXICO OIL CONSERVATION COMMISS N
WELL LOCATION AND ACREAGE DEDICATION PLAT

Form C-102
Supersedes C-128
Effective 1-1-65

All distances must be from the outer boundaries of the Section.

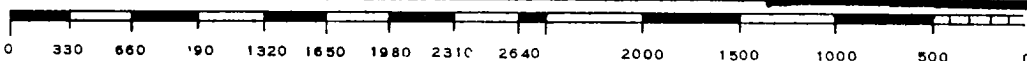
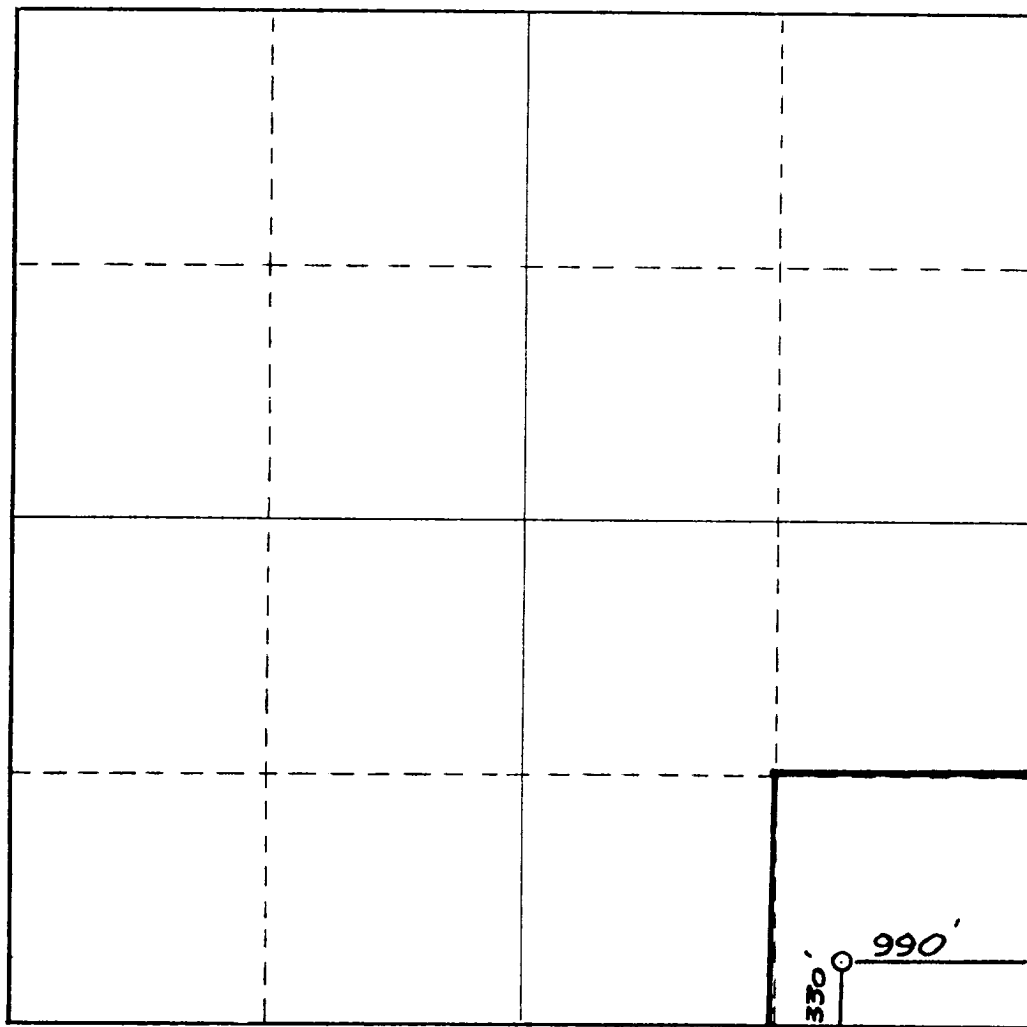
Operator YATES PETROLEUM CORPORATION			Lease Winter DN		Well No. 3
Unit Letter P	Section 14	Township 17 South	Range 25 East	County Eddy	
Actual Footage Location of Well: 330 feet from the South line and 990 feet from the East line					
Ground Level Elev. 3472.	Producing Formation San Andres		Pool Eagle Creek SA	Dedicated Acreage: 40 Acres	

1. Outline the acreage dedicated to the subject well by colored pencil or hachure marks on the plat below.
2. If more than one lease is dedicated to the well, outline each and identify the ownership thereof (both as to working interest and royalty).
3. If more than one lease of different ownership is dedicated to the well, have the interests of all owners been consolidated by communitization, unitization, force-pooling, etc?

☐ Yes ☐ No If answer is "yes," type of consolidation _____

If answer is "no," list the owners and tract descriptions which have actually been consolidated. (Use reverse side of this form if necessary.) _____

No allowable will be assigned to the well until all interests have been consolidated (by communitization, unitization, forced-pooling, or otherwise) or until a non-standard unit, eliminating such interests, has been approved by the Commission.



CERTIFICATION

I hereby certify that the information contained herein is true and complete to the best of my knowledge and belief.

Ken Beardemphl
Name

Ken Beardemphl

Position

Regulatory Coordinator

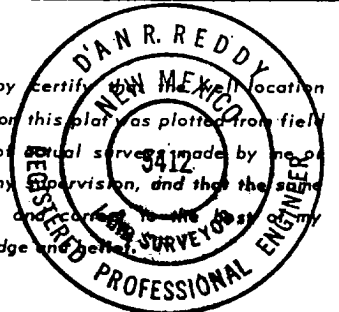
Company

Yates Petroleum Corp.

Date

9/27/82

I hereby certify that the location shown on this plat was plotted from field notes of actual survey made by me or under my supervision, and that the same is true and correct to the best of my knowledge and belief.



Date Surveyed

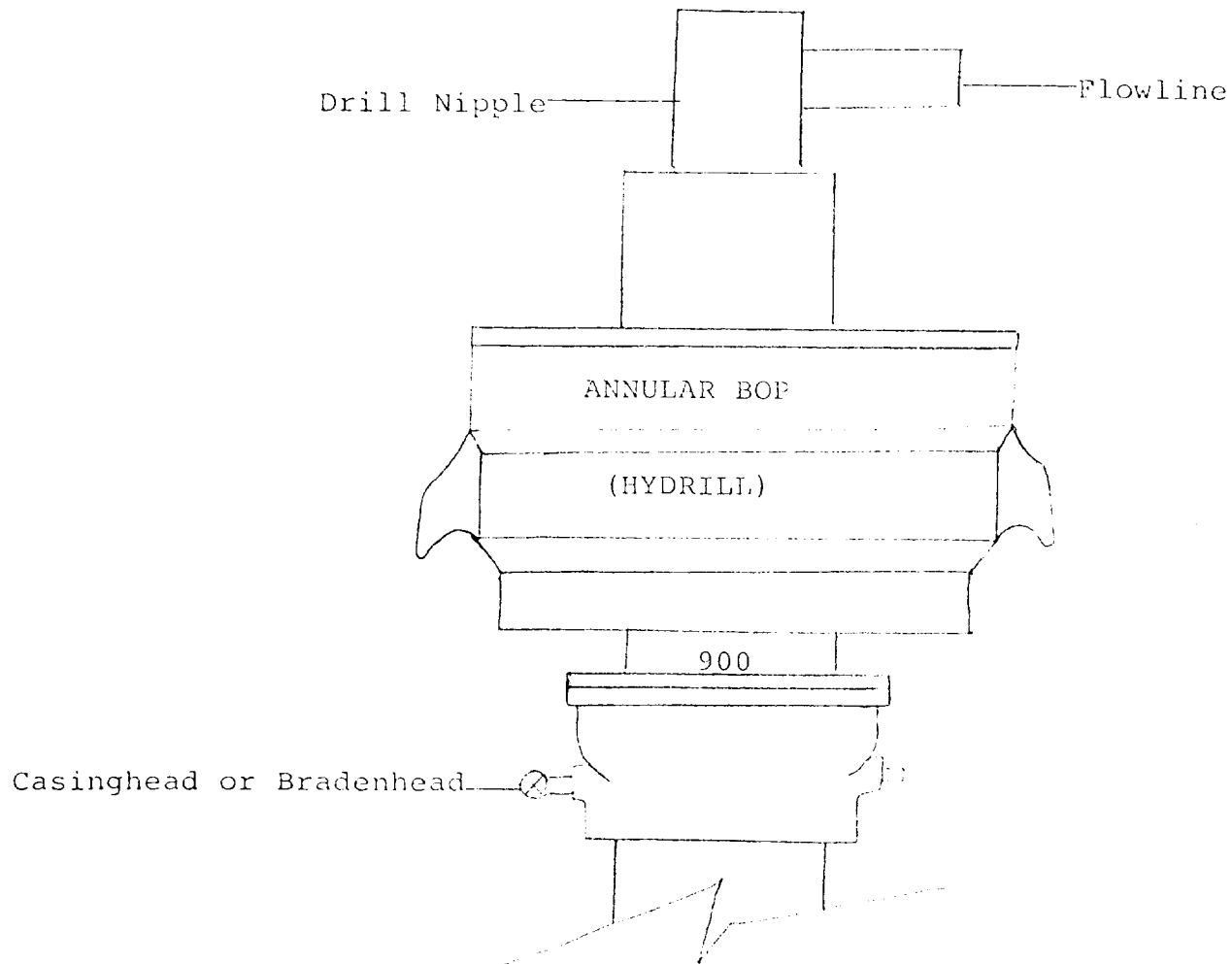
September 25, 1982

Registered Professional Engineer and/or Land Surveyor

Dan R. Reddy
Certificate No.

NM PE&LS #5412

EXHIBIT B



THE FOLLOWING CONSTITUTE MINIMUM BLOWOUT PREVENTER REQUIREMENTS

1. All preventers to be hydraulically operated with secondary manual controls installed prior to drilling out from under casing.
2. All connections from operating manifolds to preventers to be all steel. Hole or tube a minimum of one inch in diameter.
3. The available closing pressure shall be at least 15% in excess of that required with sufficient volume to operate the BOP's.
4. All connections to and from preventer to have a pressure rating equivalent to that of the BOP's.
5. Hole must be kept filled on trips below intermediate casing.