

Draw DD
Artesia, NM 88210SUBMIT IN TR DATE*
(Other instructions on
reverse side)Form approved.
Budget Bureau No. 42-R1425.UNITED STATES
DEPARTMENT OF THE INTERIOR
GEOLOGICAL SURVEY

30-015-24278

5. LEASE DESIGNATION AND SERIAL NO.

NM-27911

6. IF INDIAN, ALLOTTEE OR TRIBE NAME

7. UNIT AGREEMENT NAME

8. FARM OR LEASE NAME

Federal "BX"

9. WELL NO.

2

10. FIELD AND POOL, OR WILDCAT

Eagle Creek/SA

11. SEC., T., R., M., OR BLK.
AND SURVEY OR AREA

Sec. 27-T17S-R25E

12. COUNTY OR PARISH

Eddy

13. STATE

NM

APPLICATION FOR PERMIT TO DRILL, DEEPEN, OR PLUG BACK

1a. TYPE OF WORK

DRILL ☒DEEPEN ☐

RECEIVED

PLUG BACK ☐

b. TYPE OF WELL

OIL
WELL ☒GAS
WELL ☐OTHER ☐

SEP 23 1982

SINGLE
WELL ☐MULTIPLE
ZONE ☐

2. NAME OF OPERATOR

Yates Petroleum Corporation ✓

O. C. D.

3. ADDRESS OF OPERATOR

207 S. 4th, Artesia, New Mexico 88210

ARTESIA OFFICE

4. LOCATION OF WELL (Report location clearly and in accordance with any State requirements.)*

At surface

1650' FNL and 1650' FEL

At proposed prod. zone

same

14. DISTANCE IN MILES AND DIRECTION FROM NEAREST TOWN OR POST OFFICE*

Approximately 3 miles SW of Artesia, NM.

15. DISTANCE FROM PROPOSED*

LOCATION TO NEAREST

PROPERTY OR LEASE LINE, FT.

(Also to nearest drlg. unit line, if any)

1650'

16. NO. OF ACRES IN LEASE

17. NO. OF ACRES ASSIGNED
TO THIS WELL

40

18. DISTANCE FROM PROPOSED LOCATION*

TO NEAREST WELL, DRILLING, COMPLETED,
OR APPLIED FOR, ON THIS LEASE, FT.

19. PROPOSED DEPTH

1500'

20. ROTARY OR CABLE TOOLS

Rotary

21. ELEVATIONS (Show whether DF, RT, GR, etc.)

3519' GL.

22. APPROX. DATE WORK WILL START*

23.

PROPOSED CASING AND CEMENTING PROGRAM

SIZE OF HOLE	SIZE OF CASING	WEIGHT PER FOOT	SETTING DEPTH	QUANTITY OF CEMENT
14 1/2"	10 3/4"	30#	appr. 340'	200 sx circulated
9 1/2"	7"	23#	appr. 1140'	400 sx circulated
6 1/2"	4 1/2"	9.5#	appr. 1500'	125 sx circulated

We propose to drill a San Andres test with approximately 340' of surface casing to shut off gravel and caving. 7" intermediate casing will be run and set 100' below the Artesian Zone and if commercial production is encountered, a string will be run, perforated and stimulated for production.

MUD PROGRAM: FW gel and LCM to 1140' (or dry drill) water to TD.

BOP PROGRAM: BOP's will be installed on 7" casing and tested daily.

RECEIVED

SEP 13 1982

IN ABOVE SPACE DESCRIBE PROPOSED PROGRAM: If proposal is to deepen or plug back, give data on present productive zone and proposed new productive zone. If proposal is to drill or deepen directionally, give pertinent data on subsurface locations and measured and true vertical depths. Give blowout preventer program, if any.

24.

SIGNED

APPROVED

TITLE Regulatory Coordinator

DATE 9/13/82

OIL & GAS
MINERALS MGMT. SERVICE
ROSWell, NEW MEXICO

(This space for Federal or State office use)

(Orig. Sgd.) GEORGE H. STEWART

PERMIT NO.

SEP 20 1982

APPROVAL DATE

APPROVED BY

TITLE

DATE

CONDITIONS OF APPROVAL, IF ANY:

JAMES A. GILLHAM
DISTRICT SUPERVISOR

Y MEXICO OIL CONSERVATION COMMISSION
WELL LOCATION AND ACREAGE DEDICATION PLAT

Form C-102
Supersedes C-128
Effective 1-1-65

All distances must be from the outer boundaries of the Section

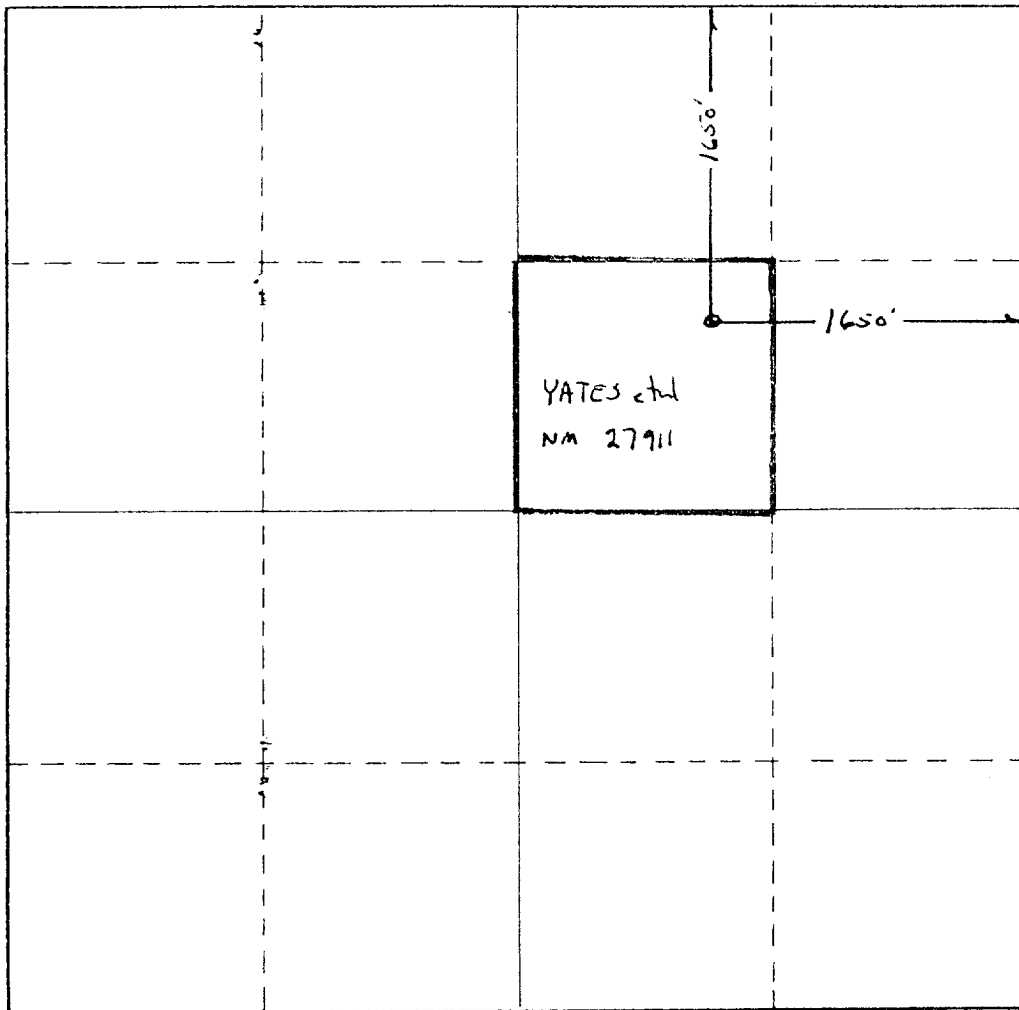
Operator YATES PETROLEUM CORPORATION			Lease Federal "BX"		Well No. 2
Unit Letter G	Section 27	Township 17 South	Range 25 East	County Eddy	
Actual Footage Location of Well: 1650 feet from the North line and 1650 feet from the East line					
Ground Level Elev. 3519.1	Producing Formation San Andres		Pool Eagle Creek SA		Dedicated Acreage: 40 Acres

1. Outline the acreage dedicated to the subject well by colored pencil or hachure marks on the plat below.
2. If more than one lease is dedicated to the well, outline each and identify the ownership thereof (both as to working interest and royalty).
3. If more than one lease of different ownership is dedicated to the well, have the interests of all owners been consolidated by communitization, unitization, force-pooling, etc?

☐ Yes ☐ No If answer is "yes," type of consolidation _____

If answer is "no," list the owners and tract descriptions which have actually been consolidated. (Use reverse side of this form if necessary.) _____

No allowable will be assigned to the well until all interests have been consolidated (by communitization, unitization, forced-pooling, or otherwise) or until a non-standard unit, eliminating such interests, has been approved by the Commission.



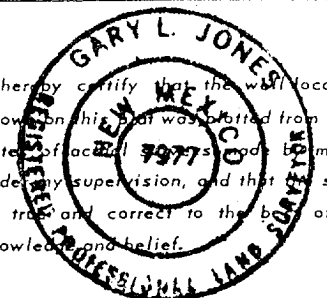
CERTIFICATION

I hereby certify that the information contained herein is true and complete to the best of my knowledge and belief.

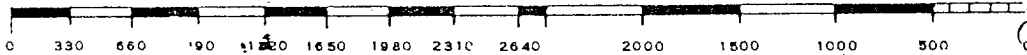
Ken Beardemphl

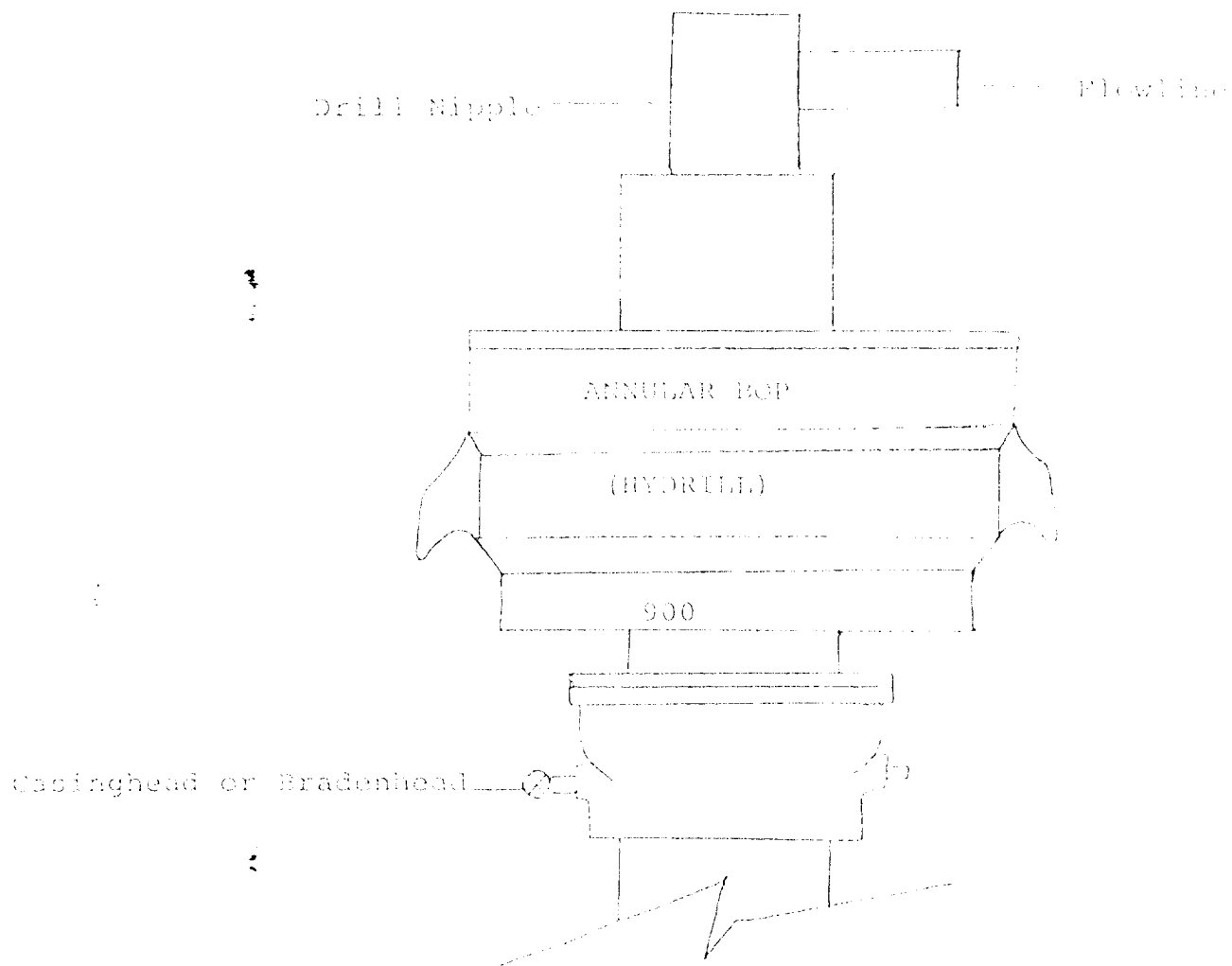
Name
Ken Beardemphl
Position
Regulatory Coordinator
Company
Yates Petroleum Corp.
Date
9/13/82

I hereby certify that the well location shown on this plat was plotted from field notes of actual surveys made by me or under my supervision, and that the same is true and correct to the best of my knowledge and belief.



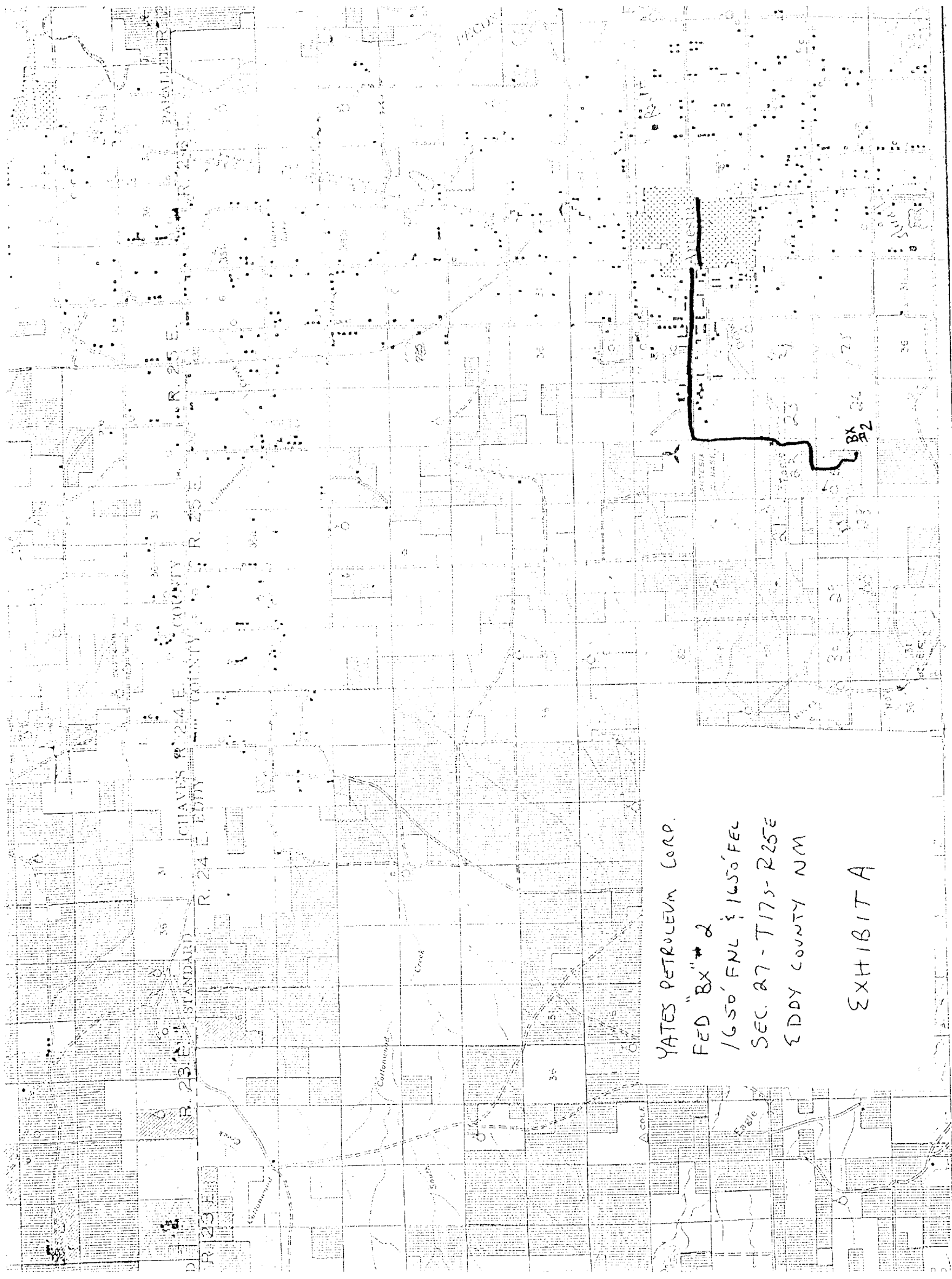
Date Surveyed
September 10, 1982
Registered Professional Engineer and/or Land Surveyor
[Signature]
Certificate No.
7977





THE FOLLOWING CONSTITUTE MINIMUM BLOWOUT PREVENTER REQUIREMENTS

1. All preventers to be hydraulically operated with secondary manual controls installed prior to drilling out from under casing.
2. All connections from operating manifolds to preventers to be all steel. Hole or tube a minimum of one inch in diameter.
3. The available closing pressure shall be at least 15% in excess of that required with sufficient volume to operate the BOP's.
4. All connections to and from preventer to have a pressure rating equivalent to that of the BOP's.
5. Hole must be kept filled on trips below intermediate casing.



YATES PETROLEUM CORP.
FED "BX" #2
1650' FNL § 1650' FEL
SEC. 27-T17S-R25E
EDDY COUNTY NM

EXHIBIT A

YATES PETROLEUM CORPORATION

