

UNITED STATES
DEPARTMENT OF THE INTERIOR
GEOLOGICAL SURVEY

APPLICATION FOR PERMIT TO DRILL, DEEPEN, OR PLUG BACK

1a. TYPE OF WORK

DRILL ☒

DEEPEN ☐

PLUG BACK ☐

b. TYPE OF WELL

OIL WELL ☒

GAS WELL ☐

OTHER ☐

2. NAME OF OPERATOR

Yates Petroleum Corporation

3. ADDRESS OF OPERATOR

207 S. 4th, Artesia, New Mexico 88210

4. LOCATION OF WELL (Report location clearly and in accordance with any State requirements.*)

At surface

990' FSL and 1090' FWL

At proposed prod. zone
same

14. DISTANCE IN MILES AND DIRECTION FROM NEAREST TOWN OR POST OFFICE*

Approximately 3 miles SW of Artesia, NM.

15. DISTANCE FROM PROPOSED*

LOCATION TO NEAREST
PROPERTY OR LEASE LINE, FT.
(Also to nearest drlg. unit line, if any)

990'

18. DISTANCE FROM PROPOSED LOCATION*

TO NEAREST WELL, DRILLING, COMPLETED,
OR APPLIED FOR, ON THIS LEASE, FT.

21. ELEVATIONS (Show whether DF, RT, GR, etc.)

3535.0' GL

23.

PROPOSED CASING AND CEMENTING PROGRAM

SIZE OF HOLE	SIZE OF CASING	WEIGHT PER FOOT	SETTING DEPTH	QUANTITY OF CEMENT
14 1/2"	10 3/4"	32#	appr. 350'	300 sx circulated
9 1/2"	7"	20#	appr. 1150'	800 sx circulated
6 1/4"	4 1/2"	9.5#	TD 1500'	180 sx circulated

Propose to drill a San Andres test. Approximately 350' of 10 3/4" casing will be run and cemented to the surface to shut off gravel and caving, 7" casing will be run 100' below the Artesian Zone, cemented to surface. Production string will be run and cemented, perforated and sand fractured for completion.

MUD PROGRAM: FW mud w/LCM from surface to 1150', FW to TD.

BOP PROGRAM: BOP's to be installed on 7" casing and tested daily.

IN ABOVE SPACE DESCRIBE PROPOSED PROGRAM: If proposal is to deepen or plug back, give data on present productive zone and proposed new productive zone. If proposal is to drill or deepen directionally, give pertinent data on subsurface locations and measured and true vertical depths. Give blowout preventer program, if any.

24.

SIGNED

George H. Stewart

TITLE Regulatory Coordinator

DATE 9/30/82

(This space for Federal or State office use)

(Orig. Sgd.) **GEORGE H. STEWART**

PERMIT NO.

OCT 4 1982

APPROVAL DATE

APPROVED BY

CONDITIONS OF APPROVAL, IF ANY

DAVID L. GILHAM
DISTRICT SUPERVISOR

TITLE

DATE

5. LEASE DESIGNATION AND SERIAL NO.

NM-0219603-A

6. IF INDIAN, ALLOTTEE OR TRIBE NAME

7. UNIT AGREEMENT NAME

8. FARM OR LEASE NAME

Federal "BW"

9. WELL NO.

15

10. FIELD AND POOL, OR WILDCAT

Eagle Creek/SA

11. SEC., T., R., M., OR BLK.
AND SURVEY OR AREA

Sec. 22-T17S-R25E

12. COUNTY OR PARISH

Eddy

13. STATE

NM

17. NO. OF ACRES ASSIGNED
TO THIS WELL

40

20. ROTARY OR CABLE TOOLS

Rotary

22. APPROX. DATE WORK WILL START*

ASAP

*Drilled
101-AP1
New location
look on
8-12-82*

**N MEXICO OIL CONSERVATION COMMISSION
WELL LOCATION AND ACREAGE DEDICATION PLAT**

Form C-102
Supersedes C-128
Effective 1-1-65

All distances must be from the outer boundaries of the Section.

Operator YATES PETROLEUM CORPORATION			Lease Federal "BW"		Well No. 15
Unit Letter M	Section 22	Township 17 South	Range 25 East	County Eddy	
Actual Footage Location of Well: 990 feet from the South line and 1090 feet from the West line					
Ground Level Elev. 3535.' GL	Producing Formation SAN ANDRES		Pool EAGLE Creek (SA)		Dedicated Acreage: 40 Acres

1. Outline the acreage dedicated to the subject well by colored pencil or hachure marks on the plat below.
2. If more than one lease is dedicated to the well, outline each and identify the ownership thereof (both as to working interest and royalty).
3. If more than one lease of different ownership is dedicated to the well, have the interests of all owners been consolidated by communitization, unitization, force-pooling, etc?

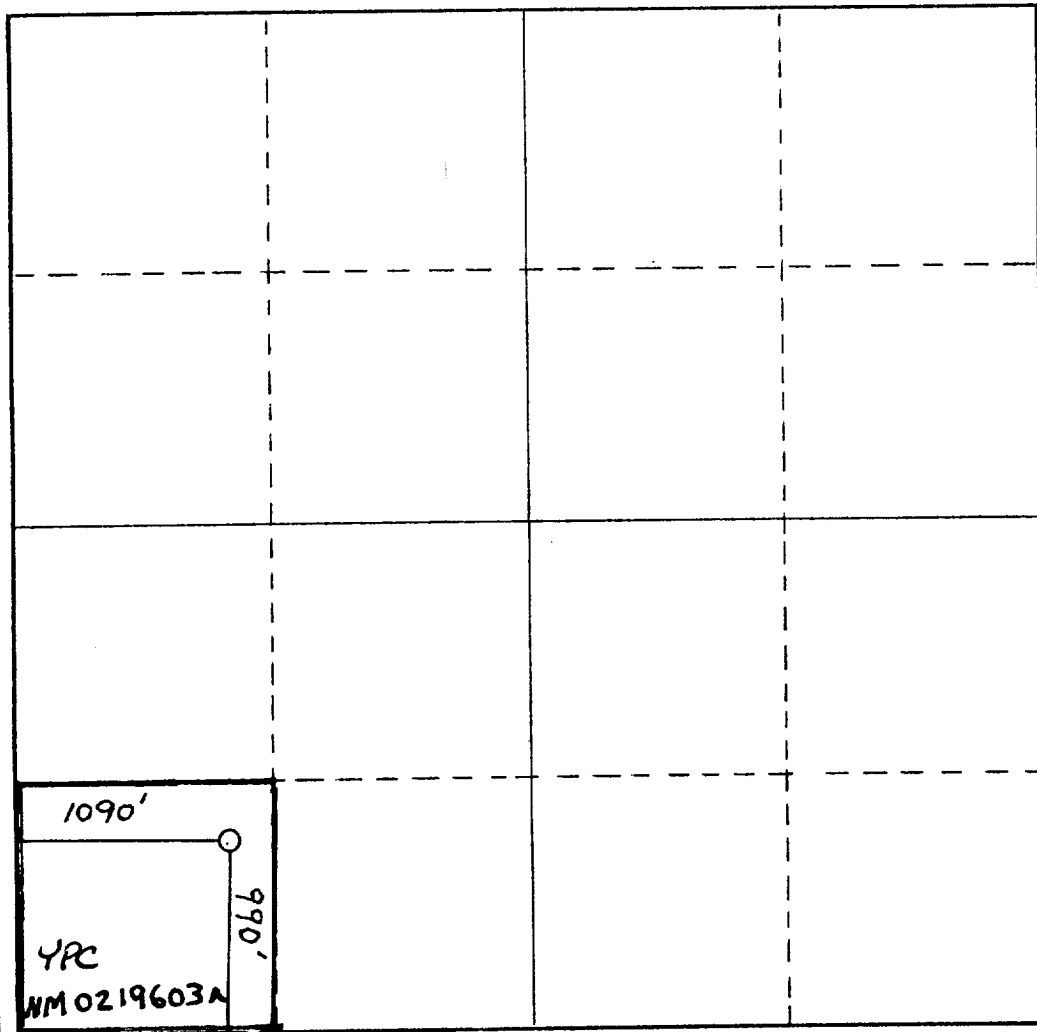
☐ Yes ☐ No If answer is "yes," type of consolidation _____

If answer is "no," list the owners and tract descriptions which have actually been consolidated (Use reverse side of this form if necessary.) _____

No allowable will be assigned to the well until all interests have been consolidated (by communitization, unitization, forced-pooling, or otherwise) or until a non-standard unit, eliminating such interests, has been approved by the Commission.

RECEIVED
SEP 30 1982

OIL & GAS
U.S. GEOLOGICAL SURVEY
ROSWELL, NEW MEXICO



CERTIFICATION

I hereby certify that the information contained herein is true and complete to the best of my knowledge and belief.

Cy Cowan

Name

Cy Cowan

Position

Regulatory Coordinator

Company

Yates Petroleum Corp.

Date

9/30/82

DAN R. REDDY
I hereby certify that the well location shown on this plat was plotted from field notes of actual surveys made by me or under my supervision, and that the same is true and correct to the best of my knowledge and belief.
REGISTERED PROFESSIONAL ENGINEER
NEW MEXICO
5412

Date Surveyed

September 27, 1982

Registered Professional Engineer
and/or Land Surveyor

Dan R. Reddy

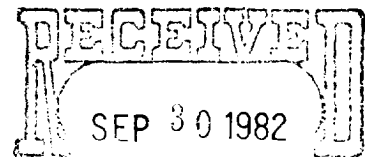
Certificate No.

NM PE&LS #5412

0 330 660 990 1320 1650 1980 2310 2640 2000 1500 1000 500 0

YATES PETROLEUM CORPORATION

Federal "BW" #15
990' FSL and 1090' FWL
Sec. 22-T17S-R25E

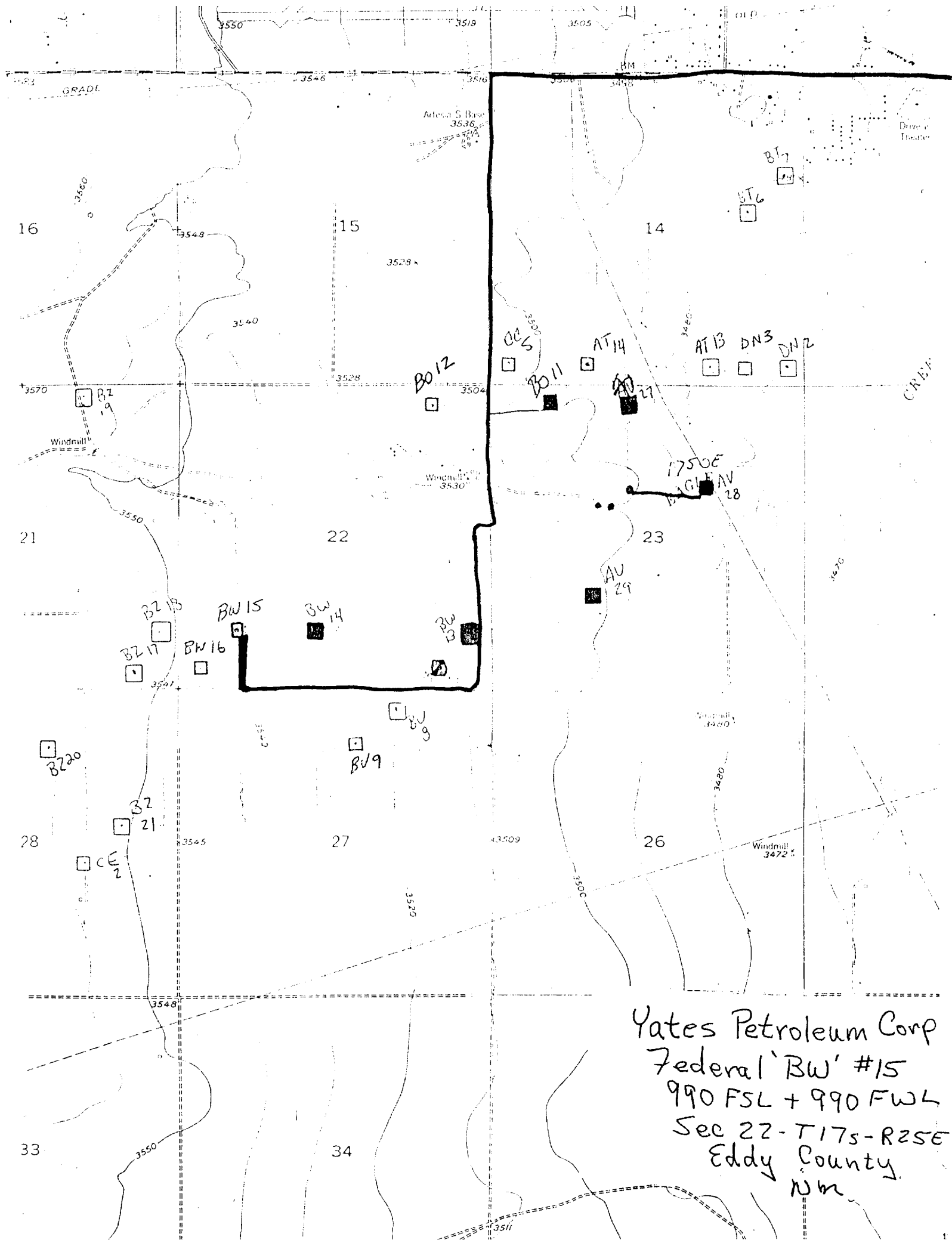


In conjunction with Form 9-331C, Application for Permit to Drill subject well, Yates Petroleum Corporation submits the following ten items of pertinent information in accordance with USGS requirements.

Oil & Gas
 ROSWELL, NEW MEXICO

1. The geologic surface formation is quaternary alluvium.
2. The estimated tops of geologic markers are as follows:
TD 1500'

3. The estimated depths at which anticipated water, oil or gas formations are expected to be encountered:
 Water: approximately 150'-250' and 700'-950'
 Oil or Gas: San Andres 1300'-1450'
4. Proposed Casing Program: See Form 9-331C.
5. Pressure Control Equipment: See Form 9-331C and Exhibit B.
6. Mud Program: See Form 9-331C.
7. Auxiliary Equipment: Kelly Cock; pit level indicators and flow sensor equipment;
 sub with full-opening valve on floor, drill pipe connection.
8. Testing, Logging and Coring Program:
 Samples: 10' samples from under surface
 DST's: none
 Coring: none
 Logging: GR-Nuetron
9. No abnormal pressures or temperatures are anticipated.
10. Anticipated starting date: As soon as possible after approval.

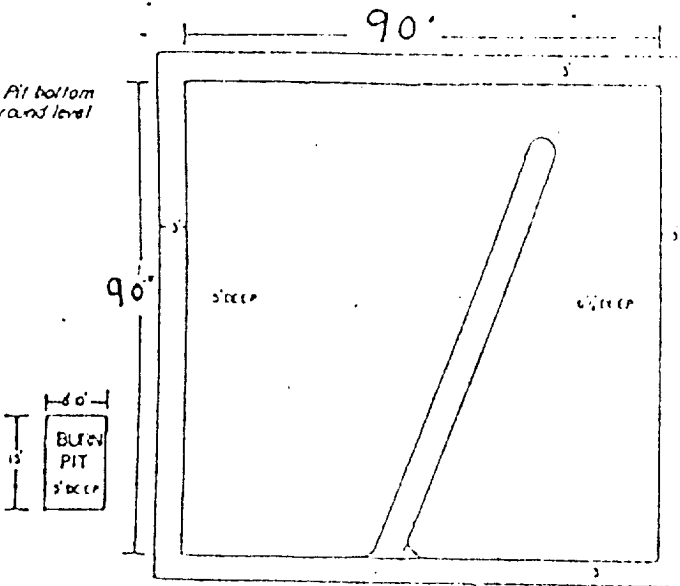


Yates Petroleum Corp
Federal 'BW' #15
990 FSL + 990 FWL
Sec 22-T17s-R2SE
Eddy County
NM

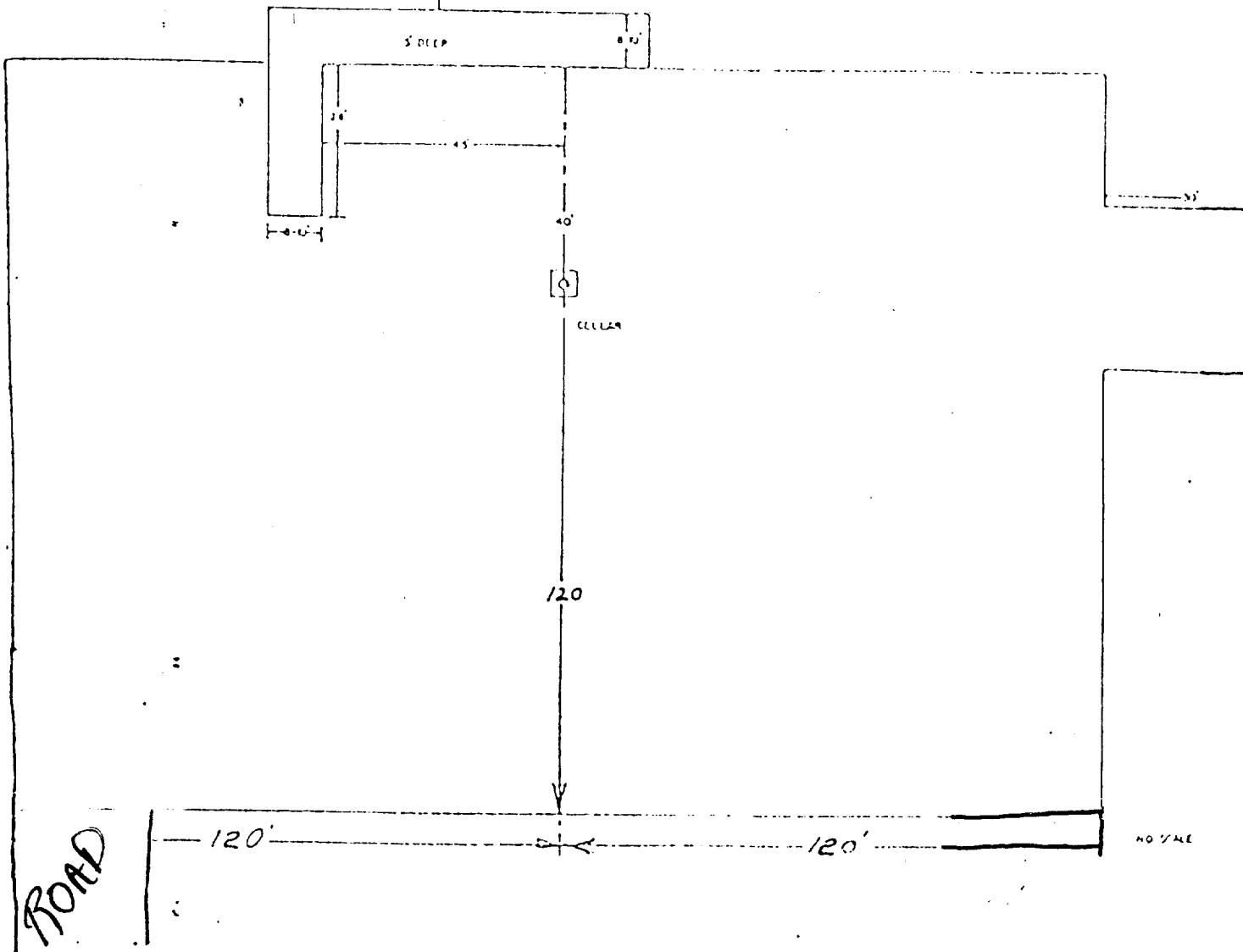
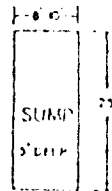
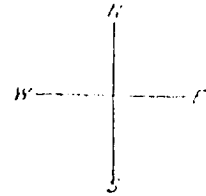
271161

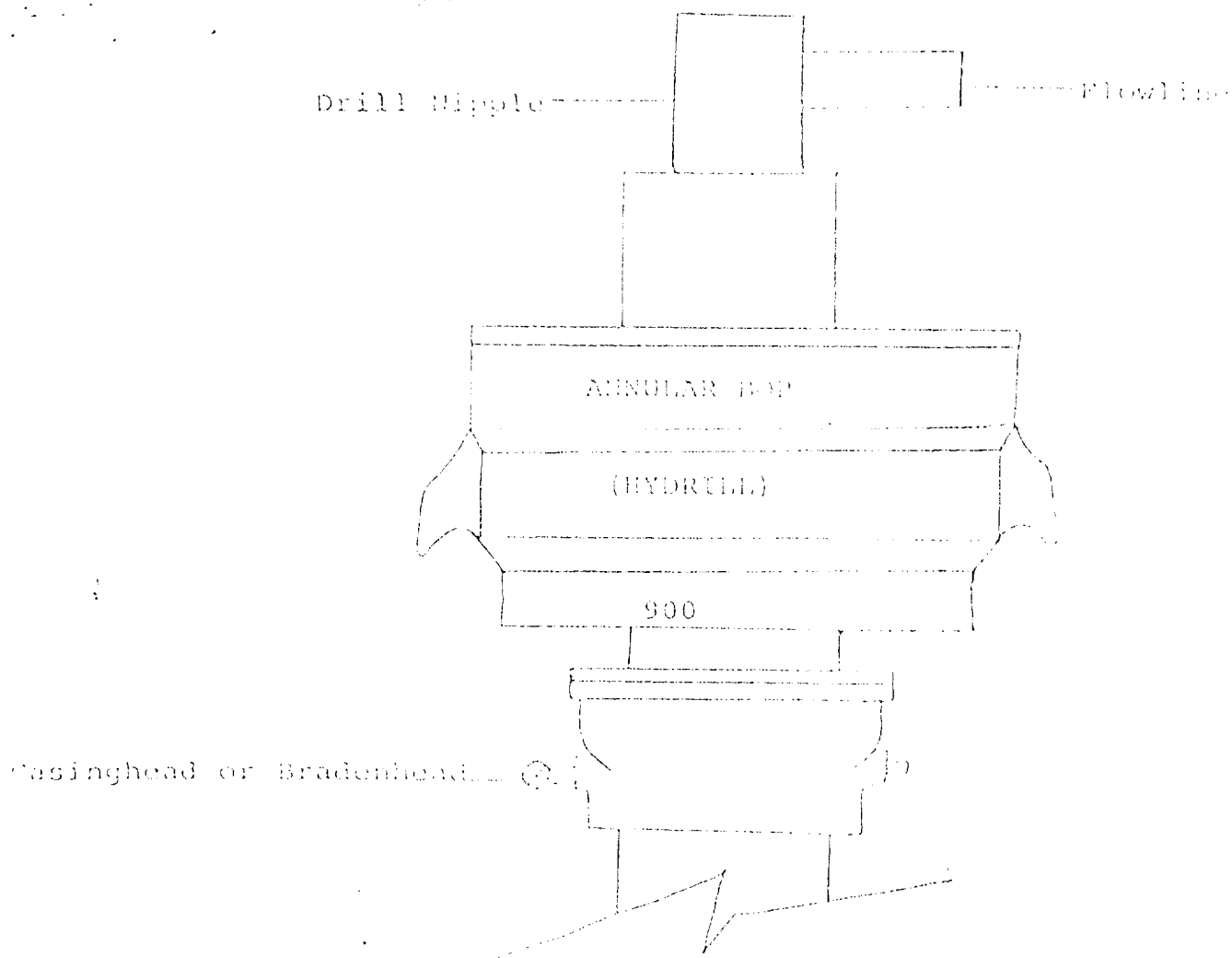
YATES PETROLEUM CORPORATION

Reserve Pit bottom
to be at ground level
to -111.



NOTE:
Holes were made by an
high and wide in center
width of pit





THE FOLLOWING CONSTITUTE MINIMUM BLOWOUT PREVENTER REQUIREMENTS

1. All preventers to be hydraulically operated with secondary manual controls installed prior to drilling out from under casing.
2. All connections from operating manifolds to preventers to be all steel. Hole or tube a minimum of one inch in diameter.
3. The available closing pressure shall be at least 15% in excess of that required with sufficient volume to operate the BOP's.
4. All connections to and from preventer to have a pressure rating equivalent to that of the BOP's.
5. Hole must be kept filled on trips below intermediate casing.