

NO. OF COPIES RECEIVED	
DISTRIBUTION	
SANTA FE	
FILE	
U.S.G.S.	
LAND OFFICE	
OPERATOR	

RECEIVED

NOV 9 1982

O. C. D.

ARTESIA OFFICE

APPLICATION FOR PERMIT TO DRILL, DEEPEN, OR PLUG BACK

1. Type of Work

DRILL ☐DEEPEN ☐PLUG BACK ☐

2. Type of Well

OIL WELL ☒GAS WELL ☐OTHER ☐SINGLE ZONE ☐MULTIPLE ZONE ☐

3. Name of Operator

Yates Petroleum Corporation ✓

4. Address of Operator

207 South 4th Street, Artesia, New Mexico 88210

5. Location of Well

UNIT LETTER B LOCATED 330 FEET FROM THE North LINE1650 FEET FROM THE East LINE OF SEC. 23 TWP. 17 RGE. 25 NEEPMA

5A. Indicate Type of Lease

STATE ☐FEE ☒

6. State Oil & Gas Lease No.

7. Unit Agreement Name

8. Farm or Lease Name

Gissler AV

9. Well No.

32

10. Field and Pool, or Wildcat

Eagle Creek (SA)

12. County

Eddy

15. Proposed Depth

Apprx. 1500'

19A. Formation

Abo

20. Rotary or C.T.

Rotary

Elevations (show whether D.F., K.I., etc.)

3477' GL

21A. Kind & Status Plug. bond

Blanket

21B. Drilling Contractor

L & M #2

22. Approx. Date Work will start

ASAP

PROPOSED CASING AND CEMENT PROGRAM

SIZE OF HOLE	SIZE OF CASING	WEIGHT PER FOOT	SETTING DEPTH	SACKS OF CEMENT	EST. TOP
14 1/2"	10 3/4"	32#	apprx. 350'	200 sxs	circ.
9 1/2"	7"	30#	apprx. 1150'	700 sxs	circ.
6 1/4"	4 1/2"	10.5#	apprx. 1500'	150 sxs	circ.

Propose to drill a San Andres test. Approximately 350' of 10 3/4" casing will be run and cemented to the surface to shut off gravel and caving, and 7" casing will be run 100' below the Artesian Zone, cemented to the surface. A tapered oil string will be run and cemented, perforated and sand frac'd for production.

MUD PROGRAM: Fresh water gel and LCM to 1150' (or dry drill), fresh water to total depth.

BOP PROGRAM: BOP's to be installed on 7" casing and tested daily for operational.

APPROVAL VALID FOR 180 DAYS
PERMIT EXPIRES 5/14/83
UNLESS DRILLING UNDERWAY

BELOW SPACE DESCRIBE PROPOSED PROGRAM; IF PROPOSAL IS TO DEEPEN OR PLUG BACK, GIVE DATA ON PRESENT PRODUCTIVE ZONE AND PROPOSED NEW PRODUCTION. GIVE BLOWOUT PREVENTER PROGRAM, IF ANY.

I hereby certify that the information above is true and complete to the best of my knowledge and belief.

by Cy Carson Title Regulatory Coordinator Date November 9, 1982

(This space for State Use)

APPROVED BY Mike Walker TITLE OIL AND GAS INSPECTOR DATE NOV 10 1982

CONDITIONS OF APPROVAL, IF ANY:

Notify N.M.O.C.C. in sufficient
time to witness cementing

the 7 casing

NE MEXICO OIL CONSERVATION COMMISSION
WELL LOCATION AND ACREAGE DEDICATION PLAT

RECEIVED

Form C-102
Supersedes C-128
Effective 1-1-65

All distances must be from the outer boundaries of the Section.

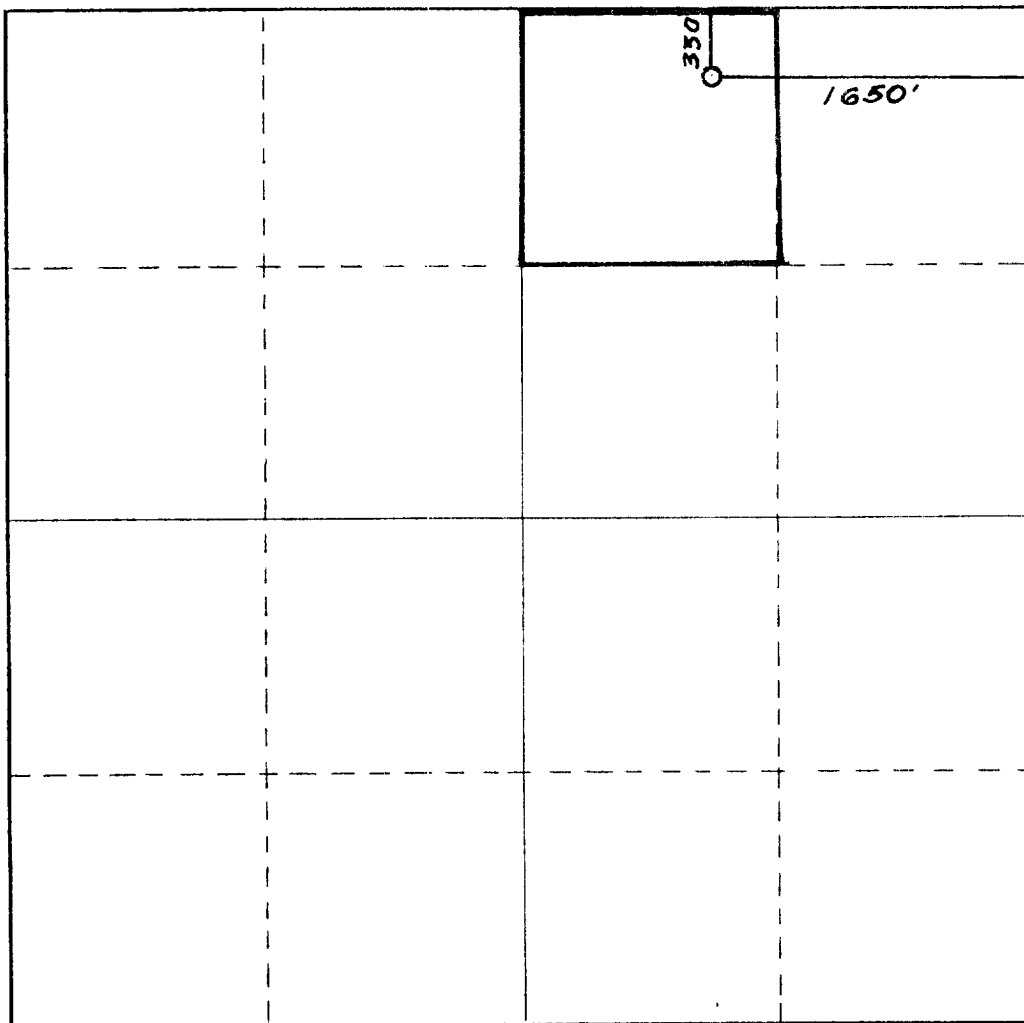
Operator YATES PETROLEUM CORPORATION		Lease Gissler AV		NOV 9 1982 No. 32	
Unit Letter B	Section 23	Township 17 South	Range 25 East	County O. C. D. ARTESIA, OFFICE	
Actual Footage Location of Well: 330 feet from the North line and 1650 feet from the East line					
Ground Level Elev. 3477.	Producing Formation SAN ANDRES		Pool EAGLE Creek CSA	Dedicated Acreage: 40 Acres	

1. Outline the acreage dedicated to the subject well by colored pencil or hachure marks on the plat below.
2. If more than one lease is dedicated to the well, outline each and identify the ownership thereof (both as to working interest and royalty).
3. If more than one lease of different ownership is dedicated to the well, have the interests of all owners been consolidated by communitization, unitization, force-pooling, etc?

☐ Yes ☒ No If answer is "yes," type of consolidation _____

If answer is "no," list the owners and tract descriptions which have actually been consolidated. (Use reverse side of this form if necessary.) _____

No allowable will be assigned to the well until all interests have been consolidated (by communitization, unitization, forced-pooling, or otherwise) or until a non-standard unit, eliminating such interests, has been approved by the Commission.



CERTIFICATION

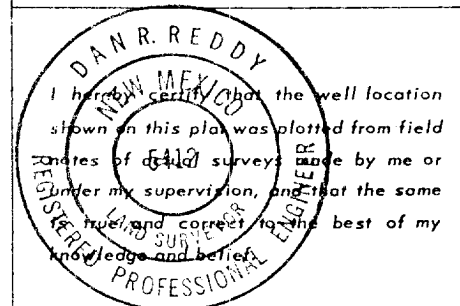
I hereby certify that the information contained herein is true and complete to the best of my knowledge and belief.

Cy Cowan

Name
Regulatory Coordinator
Yates Petroleum Corp.

Position
November 9, 1982

Date



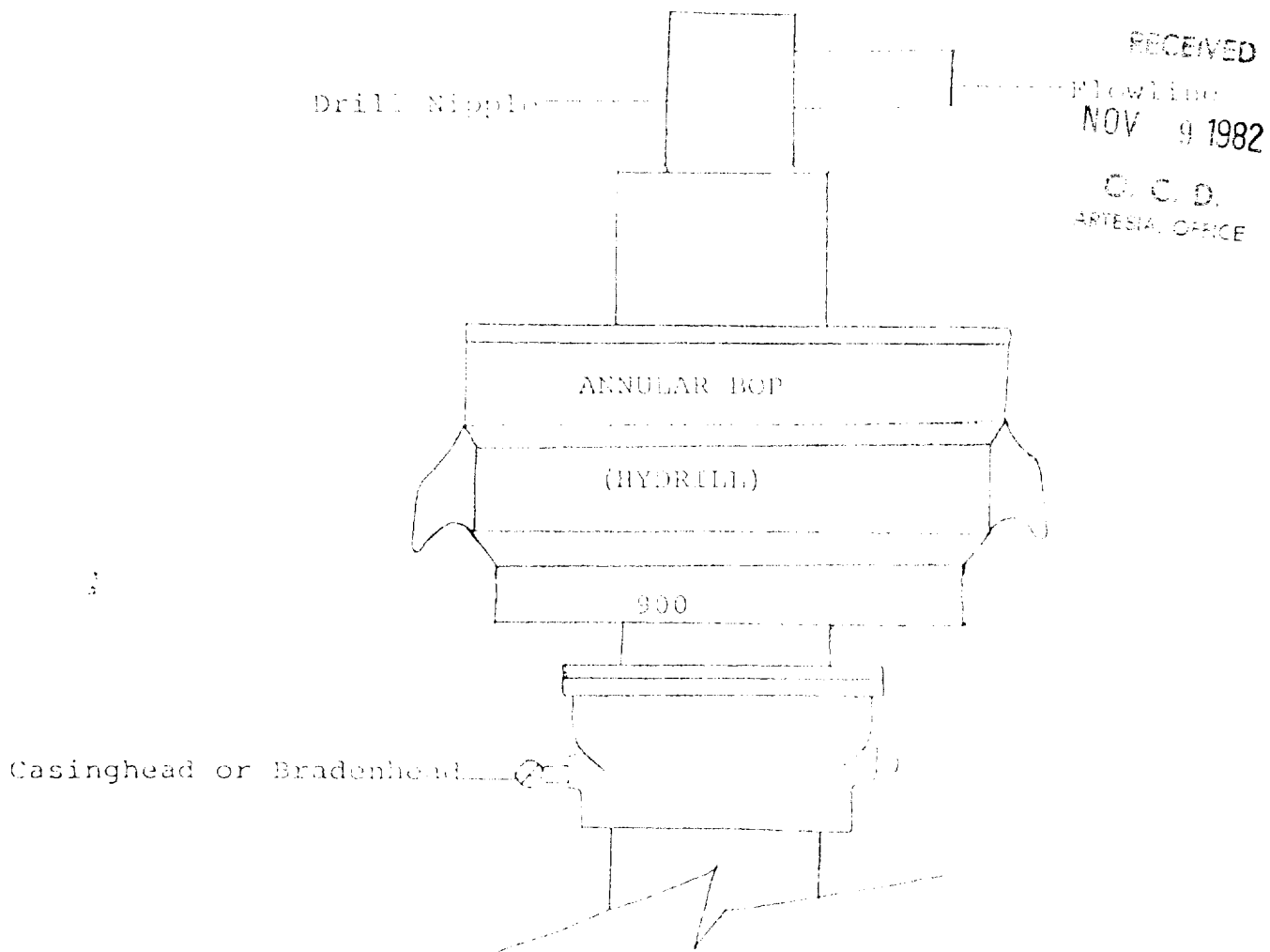
Date Surveyed
November 6, 1982

Registered Professional Engineer
and/or Land Surveyor

Dan R. Reddy

Certificate No.
NM PE&LS #5412

0 330 660 990 1320 1650 1980 2310 2640 2000 1500 1000 500 0



THE FOLLOWING CONSTITUTE MINIMUM BLOWOUT PREVENTER REQUIREMENTS

1. All preventers to be hydraulically operated with secondary manual controls installed prior to drilling out from under casing.
2. All connections from operating manifolds to preventers to be all steel. Hole or tube a minimum of one inch in diameter.
3. The available closing pressure shall be at least 15% in excess of that required with sufficient volume to operate the BOP's.
4. All connections to and from preventer to have a pressure rating equivalent to that of the BOP's.
5. Hole must be kept filled on trips below intermediate casing.