

NO. OF COPIES RECEIVED	
DISTRIBUTION	
SANTA FE	
FILE	
U.S.G.S.	
LAND OFFICE	
OPERATOR	

RECEIVED

NOV 9 1982

O. C. D.

ARTESIA, OFFICE

APPLICATION FOR PERMIT TO DRILL, DEEPEN, OR PLUG BACK

Type of Work

Type of Well DRILL ☐ DEEPEN ☐ PLUG BACK ☐
OIL WELL ☒ GAS WELL ☐ OTHER ☐ SINGLE ZONE ☐ MULTIPLE ZONE ☐

Name of Operator

Yates Petroleum Corporation

Address of Operator

207 South 4th Street, Artesia, New Mexico 88210

Location of Well

UNIT LETTER B LOCATED 990' FEET FROM THE North LINE

2310 FEET FROM THE East LINE OF SEC. 23 TWP. 17 RGE. 25 NMPM

1A. Indicate Type of Lease

STATE ☐ FEE ☒

State Oil & Gas Lease No.

7. Unit Agreement Name

8. Farm or Lease Name

Gissler AV

9. Well No.

33

10. Field and Pool, or Wildcat

Eagle Creek (SA)

12. County

Eddy

19. Proposed Depth

Approx. 1500'

19A. Formation

Abo

20. Rotary or C.T.

Rotary

Elevations (Show whether DF, RT, etc.)

3489' GL

21A. Kind & Status Plug. Bond

Blanket

21B. Drilling Contractor

L & M #2

22. Approx. Date Work will start

ASAP

PROPOSED CASING AND CEMENT PROGRAM

SIZE OF HOLE	SIZE OF CASING	WEIGHT PER FOOT	SETTING DEPTH	SACKS OF CEMENT	EST. TOP
14 1/2"	10 3/4"	32#	apprx. 350'	200 sxs	circ.
9 1/2"	7"	30#	apprx. 1150'	700 sxs	circ.
6 1/4"	4 1/2"	10.5#	apprx. 1500'	150 sxs	circ.

Propose to drill a San Andres test. Approximately 350' of 10 3/4" casing will be run and cemented to the surface to shut off gravel and caving and 7" casing will be run 100' below the Artesian Zone, cemented to the surface. A tapered oil string will be run and cemented, perforated and sand frac'd for production.

MUD PROGRAM: Fresh water gel and LCM to 1150' (or dry drill) fresh water to TD.

BOP PROGRAM: BOP's to be installed on 7" casing and tested daily for operational.

APPROVAL VALID FOR 150 DAYS
PERMIT EXPIRES 5/10/83
UNLESS DRILLING UNDERWAY

DOVE SPACE DESCRIBE PROPOSED PROGRAM: IF PROPOSAL IS TO DEEPEN OR PLUG BACK, GIVE DATA ON PRESENT PRODUCTIVE ZONE AND PROPOSED NEW PRODUCTIVE ZONE. GIVE BLOWOUT PREVENTER PROGRAM, IF ANY.

I hereby certify that the information above is true and complete to the best of my knowledge and belief.

By Cy Cavan Title Regulatory Coordinator Date November 9, 1982

(This space for State Use)

APPROVED BY Mike Walker TITLE _____ DATE _____

CONDITIONS OF APPROVAL, IF ANY:

Notified N.M.O.C.C. in sufficient
time to witness cementing
the 7" casing

NE' EXICO OIL CONSERVATION COMMISSIC
WELL LOCATION AND ACREAGE DEDICATION PLAT

RECEIVED Form C-102
Revised C-128
Effective 1-1-65

All distances must be from the outer boundaries of the Section.

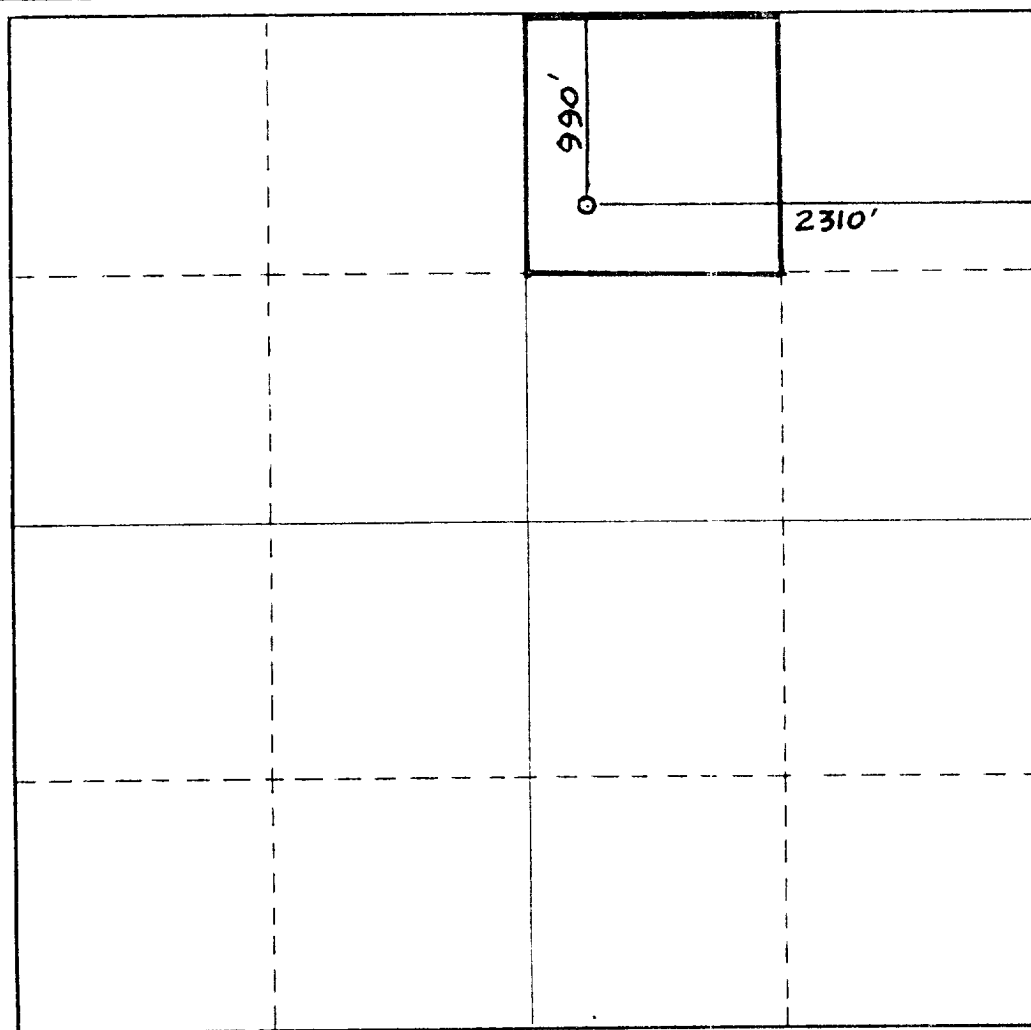
Operator YATES PETROLEUM CORPORATION		Lease Gissler AV		Well No. 33	
Unit Letter B	Section 23	Township 17 South	Range 25 East	County Eddy	
Actual Footage Location of Well: 990 feet from the North line and 2310 feet from the East line					
Ground Level Elev. 3489.	Producing Formation SAN Andres		Pool Eagle Creek (SA)		Dedicated Acreage: 40 Acres

1. Outline the acreage dedicated to the subject well by colored pencil or hatchure marks on the plat below.
2. If more than one lease is dedicated to the well, outline each and identify the ownership thereof (both as to working interest and royalty).
3. If more than one lease of different ownership is dedicated to the well, have the interests of all owners been consolidated by communitization, unitization, force-pooling, etc?

☐ Yes ☒ No If answer is "yes," type of consolidation _____

If answer is "no," list the owners and tract descriptions which have actually been consolidated. (Use reverse side of this form if necessary.) _____

No allowable will be assigned to the well until all interests have been consolidated (by communitization, unitization, forced-pooling, or otherwise) or until a non-standard unit, eliminating such interests, has been approved by the Commission.



CERTIFICATION

I hereby certify that the information contained herein is true and complete to the best of my knowledge and belief.

Cy Cuman

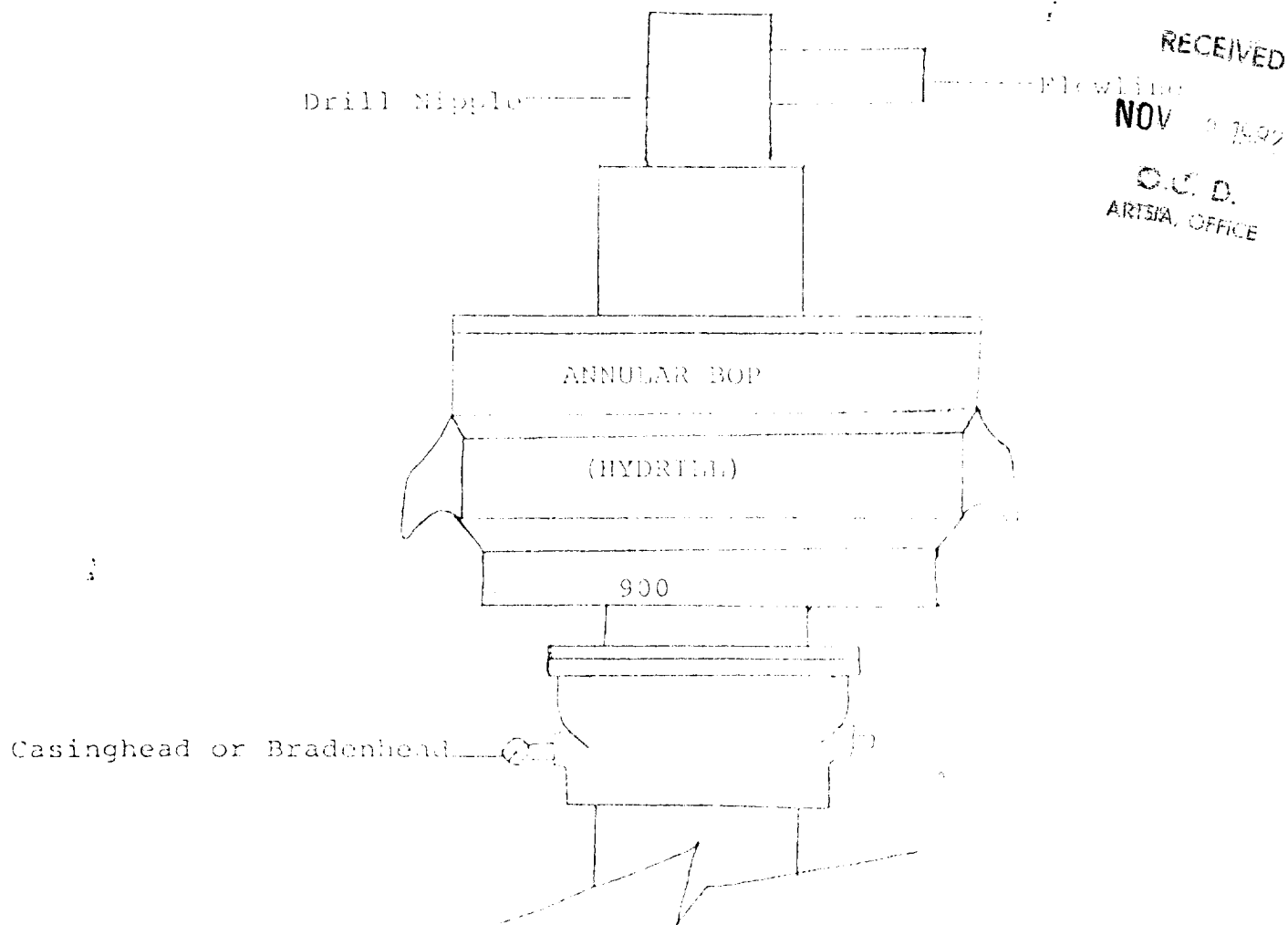
Name
Regulatory Coordinator
Position
Yates Petroleum Corporation
Company
November 9, 1982
Date

I hereby certify that the well location shown on this plat was plotted from field notes of actual surveys made by me or under my supervision, and that the same is true and correct to the best of my knowledge and belief.

Date Surveyed
November 6, 1982
Registered Professional Engineer and/or Land Surveyor

Dan R. Reddy
Certificate No.
NM PE&LS #5412

0 330 660 '90 1320 1650 1980 2310 2640 2000 1500 1000 500 0



THE FOLLOWING CONSTITUTE MINIMUM BLOWOUT PREVENTER REQUIREMENTS

1. All preventers to be hydraulically operated with secondary manual controls installed prior to drilling out from under casing.
2. All connections from operating manifolds to preventers to be all steel. Hole or tube a minimum of one inch in diameter.
3. The available closing pressure shall be at least 15% in excess of that required with sufficient volume to operate the BOP's.
4. All connections to and from preventer to have a pressure rating equivalent to that of the BOP's.
5. Hole must be kept filled on trips below intermediate casing.