

STATE OF NEW MEXICO
ENERGY AND MINERALS DEPARTMENT

CONSERVATION DIVISION
P. O. BOX 2088
SANTA FE, NEW MEXICO 87501

RECEIVED

30-015-24321
Form C-101
Revised 10-1-78

NO. OF COPIES RECEIVED	
DISTRIBUTION	
SANTA FE	<input checked="" type="checkbox"/>
FILE	<input checked="" type="checkbox"/>
U.S.G.S.	<input checked="" type="checkbox"/>
LAND OFFICE	<input checked="" type="checkbox"/>
OPERATOR	<input checked="" type="checkbox"/>

NOV 9 1982

O. C. D.

ARTESIA, OFFICE

APPLICATION FOR PERMIT TO DRILL, DEEPEN, OR PLUG BACK

Type of Work

Type of Well DRILL ☐ DEEPEN ☐ PLUG BACK ☐
OIL WELL ☒ GAS WELL ☐ OTHER ☐ SINGLE ZONE ☐ MULTIPLE ZONE ☐

Name of Operator

Yates Petroleum Corporation ✓

Address of Operator

207 South 4th Street, Artesia, New Mexico 88210

Location of Well

UNIT LETTER I LOCATED 1650 FEET FROM THE South LINE

990

FEET FROM THE East LINE OF SEC. 13 14 TWP. 17S RGE. 25E

5A. Indicate Type of Lease

STATE ☐ FEDERAL ☒

5. State Oil & Gas Lease No.

7. Unit Agreement Name

8. Farm or Lease Name

Achen Frey DM

9. Well No.

8

10. Field and Pool, or Wildcat

Eagle Creek S.A.

11. County

Eddy

19. Proposed Depth

approx. 1500'

19A. Formation

San Andres

19. Rotary or C.T.

Rotary

Elevations (show whether DF, KT, etc.)

3471' GL

21A. Kind & Status Plug. Bond

Blanket

21B. Drilling Contractor

LaRue #2

22. Approx. Date Work will start

ASAP

PROPOSED CASING AND CEMENT PROGRAM

SIZE OF HOLE	SIZE OF CASING	WEIGHT PER FOOT	SETTING DEPTH	SACKS OF CEMENT	EST. TOP
14 1/2"	10 3/4"	32#	approx. 300'	200 sxs	circ.
9 1/2"	7"	23#	approx. 1200'	400 sxs	circ.
6 1/4"	4 1/2"	9.5#	approx. 1500'	150 sxs	circ.

Propose to drill a San Andres test. Approximately 300' of 10 3/4" casing will be run and cemented to the surface to shut off surface gravel and caving, and 7" casing will be run 100' below the Artesian Zone, cemented to the surface. A tapered oil string will be run and cemented, perforated and sand frac'd for production.

MUD PROGRAM: Fresh water gel and LCM to 1180' (or dry drill), fresh water to TD.

BOP PROGRAM: BOP's to be installed on 7" casing and tested daily for operational.

APPROVAL VALID FOR 180 DAYS
PERMIT EXPIRES 5-10-83
UNLESS DRILLING UNDERWAY

BOVE SPACE DESCRIBE PROPOSED PROGRAM: IF PROPOSAL IS TO DEEPEN OR PLUG BACK, GIVE DATA ON PRESENT PRODUCTIVE ZONE AND PROPOSED NEW PRODUCTIVE ZONE. GIVE BLOWOUT PREVENTER PROGRAM, IF ANY.

by certify that the information above is true and complete to the best of my knowledge and belief.

By Ay Cowan Title Regulatory Coordinator Date November 9, 1982

(This space for State Use)

ROVED BY M. H. Walker TITLE _____ DATE _____

DITIONS OF APPROVAL, IF ANY:

Notify N.M.O.C.C. in sufficient
time to witness cementing
the 7 casing

NE MEXICO OIL CONSERVATION COMMISS
WELL LOCATION AND ACREAGE DEDICATION PLAT

Form C-102
Supersedes C-128
Effective 1-1-65

All distances must be from the outer boundaries of the Section.

RECEIVED

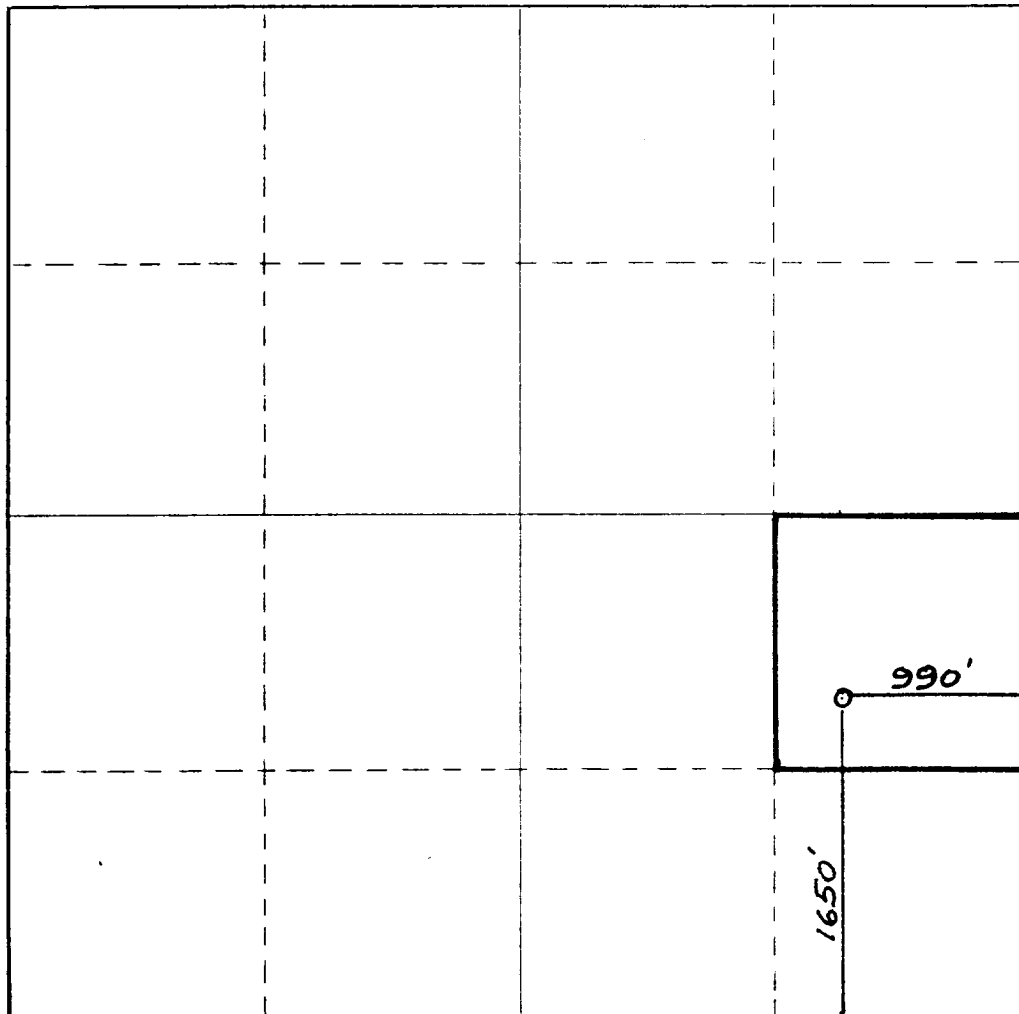
Operator YATES PETROLEUM CORPORATION			Lease Achen Frey DM		Well No. NOV 9 1982⁸
Unit Letter I	Section 14	Township 17 South	Range 25 East	County Eddy O. C. D.	
Actual Footage Location of Well: 1650 feet from the South line and 990 feet from the East line					
Ground Level Elev. 3471.	Producing Formation SAN Andres	Pool EAGLE Creek (SA)	Dedicated Acreage 40 Acres		

1. Outline the acreage dedicated to the subject well by colored pencil or hatchure marks on the plat below.
2. If more than one lease is dedicated to the well, outline each and identify the ownership thereof (both as to working interest and royalty).
3. If more than one lease of different ownership is dedicated to the well, have the interests of all owners been consolidated by communitization, unitization, force-pooling, etc?

☐ Yes ☒ No If answer is "yes," type of consolidation _____

If answer is "no," list the owners and tract descriptions which have actually been consolidated. (Use reverse side of this form if necessary.) _____

No allowable will be assigned to the well until all interests have been consolidated (by communitization, unitization, forced-pooling, or otherwise) or until a non-standard unit, eliminating such interests, has been approved by the Commission.



CERTIFICATION

I hereby certify that the information contained herein is true and complete to the best of my knowledge and belief.

Cy Cowan

Name
Regulatory Coordinator

Position
Yates Petroleum Corp.

Company
November 9, 1982

Date

I hereby certify that the well location shown on this plat was plotted from field notes of actual surveys made by me or under my supervision, and that the same are true and correct to the best of my knowledge and belief.

Date Surveyed

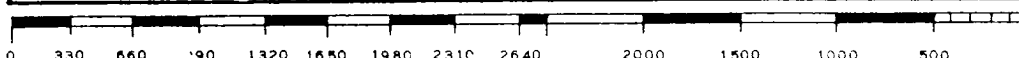
November 7, 1982

Registered Professional Engineer and/or Land Surveyor

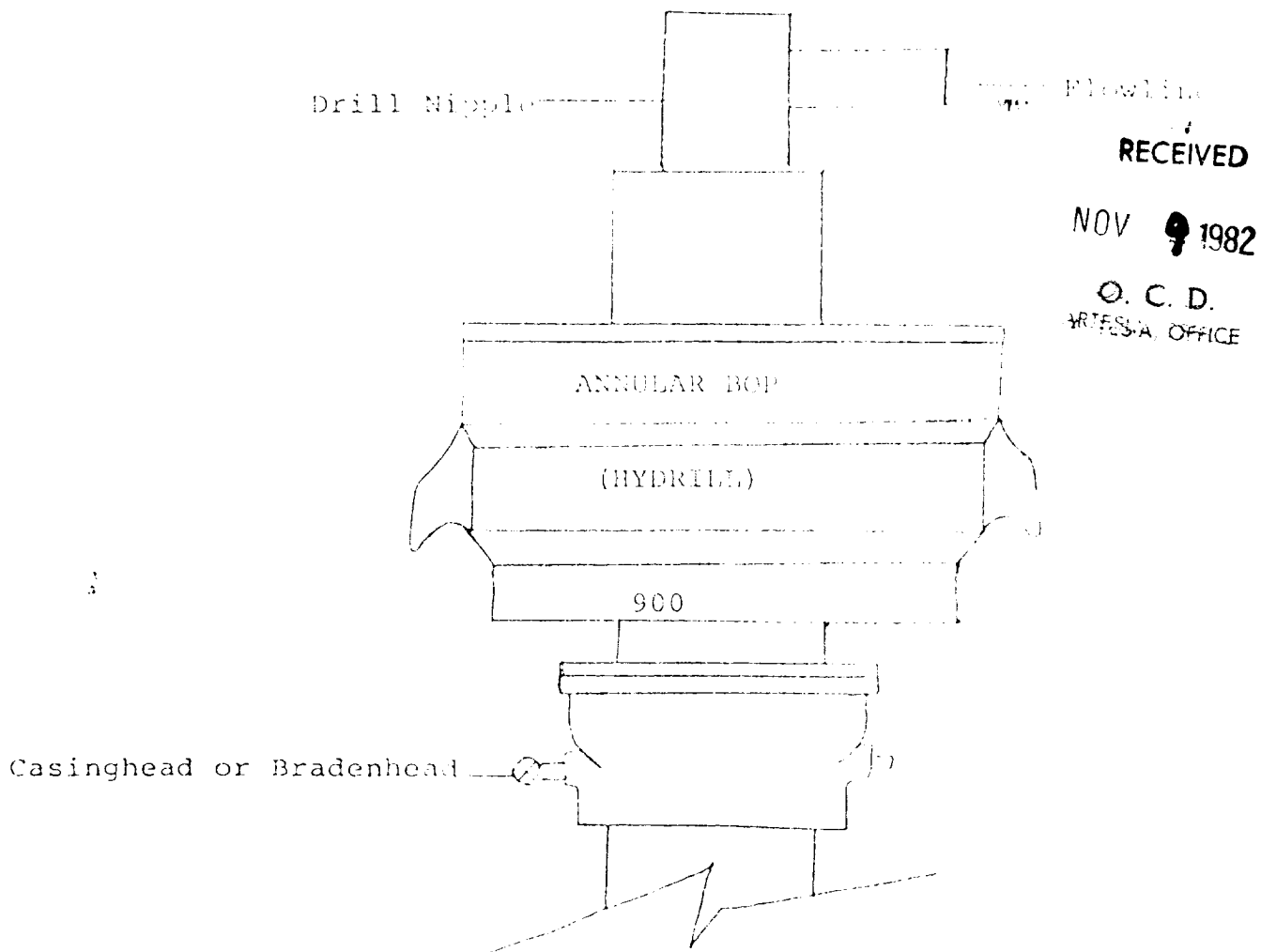
Don R. Reddy

Certificate No.

NM PE&LS #5412



CALL LOG



THE FOLLOWING CONSTITUTE MINIMUM BLOWOUT PREVENTER REQUIREMENTS

1. All preventers to be hydraulically operated with secondary manual controls installed prior to drilling out from under casing.
2. All connections from operating manifolds to preventers to be all steel. Hole or tube a minimum of one inch in diameter.
3. The available closing pressure shall be at least 15% in excess of that required with sufficient volume to operate the BOP's.
4. All connections to and from preventer to have a pressure rating equivalent to that of the BOP's.
5. Hole must be kept filled on trips below intermediate casing.