

UNITED STATES OF AMERICA  
DEPARTMENT OF THE INTERIOR  
GEOLOGICAL SURVEY

## APPLICATION FOR PERMIT TO DRILL, DEEPEN, OR PLUG BACK

1a. TYPE OF WORK

DRILL ☒DEEPEN ☐PLUG BACK ☐

b. TYPE OF WELL

OIL  
WELL ☒GAS  
WELL ☐OTHER ☐SINGLE  
ZONE ☐

RECEIVED

2. NAME OF OPERATOR

Yates Petroleum Corporation ✓

3. ADDRESS OF OPERATOR

207 S. 4th, Artesia, New Mexico 88210

4. LOCATION OF WELL (Report location clearly and in accordance with any State requirements.)  
At surface

990' FNL and 330' FWL

At proposed prod. zone

same

14. DISTANCE IN MILES AND DIRECTION FROM NEAREST TOWN OR POST OFFICE\*

Approximately 6 miles west of Artesia, New Mexico.

15. DISTANCE FROM PROPOSED\*

LOCATION TO NEAREST  
PROPERTY OR LEASE LINE, FT.  
(Also to nearest drilg. unit line, if any)

330'

18. DISTANCE FROM PROPOSED LOCATION\*  
TO NEAREST WELL, DRILLING, COMPLETED,  
OR APPLIED FOR, ON THIS LEASE, FT.

16. NO. OF ACRES IN LEASE

19. PROPOSED DEPTH

appr. 1500'

17. NO. OF ACRES ASSIGNED  
TO THIS WELL

40

20. ROTARY OR CABLE TOOLS

Rotary

21. ELEVATIONS (Show whether DF, RT, GR, etc.)

3544' GL

22. APPROX. DATE WORK WILL START\*

ASAP

## PROPOSED CASING AND CEMENTING PROGRAM

SIZE OF HOLE	SIZE OF CASING	WEIGHT PER FOOT	SETTING DEPTH	QUANTITY OF CEMENT
14 1/2"	10 3/4"	30#	appr. 320'	200 sx circulated
9 1/2"	7"	23#	appr. 1150'	400 sx circulated
6 1/4"	4 1/2"	9.5#	TD	125 sx circulated

Proposed to drill a San Andres test. Approximately 320' of surface casing will be run to shut off gravel and caving. 7" intermediate casing will be run and set 100' below the Artesian Zone. If commercial production is encountered, a string will be run, perforated and stimulated as needed for production.

MUD PROGRAM: FW gel and LCM to 1150' (or dry drill), water to TD.

BOP PROGRAM: BOP's will be installed on 7" casing and tested daily.

IN ABOVE SPACE DESCRIBE PROPOSED PROGRAM: If proposal is to deepen or plug back, give data on present productive zone and proposed new productive zone. If proposal is to drill or deepen directionally, give pertinent data on subsurface locations and measured and true vertical depths. Give blowout preventer program, if any.

SIGNED

TITLE

Regulatory Coordinator

DATE 12/16/82

(This space for Federal or State office use)

PERMIT NO.

APPROVED

(ORIG. SGD.) DAVID R. GLASS

APPROVAL DATE

APPROVED BY

CONDITIONS OF APPROVAL, IF ANY:

DEC 21 1982

JAMES A. GILLHAM  
DISTRICT SUPERVISOR

RECEIVED

DATE

DEC 16 1982

OIL & GAS  
MINERALS MGMT. SERVICE  
ROSWELL, NEW MEXICO

NEW MEXICO OIL CONSERVATION COMMISSION  
WELL LOCATION AND ACREAGE DEDICATION PLAT

Form O-102  
Supersedes C-128  
Effective 1-1-65

All distances must be from the outer boundaries of the Section

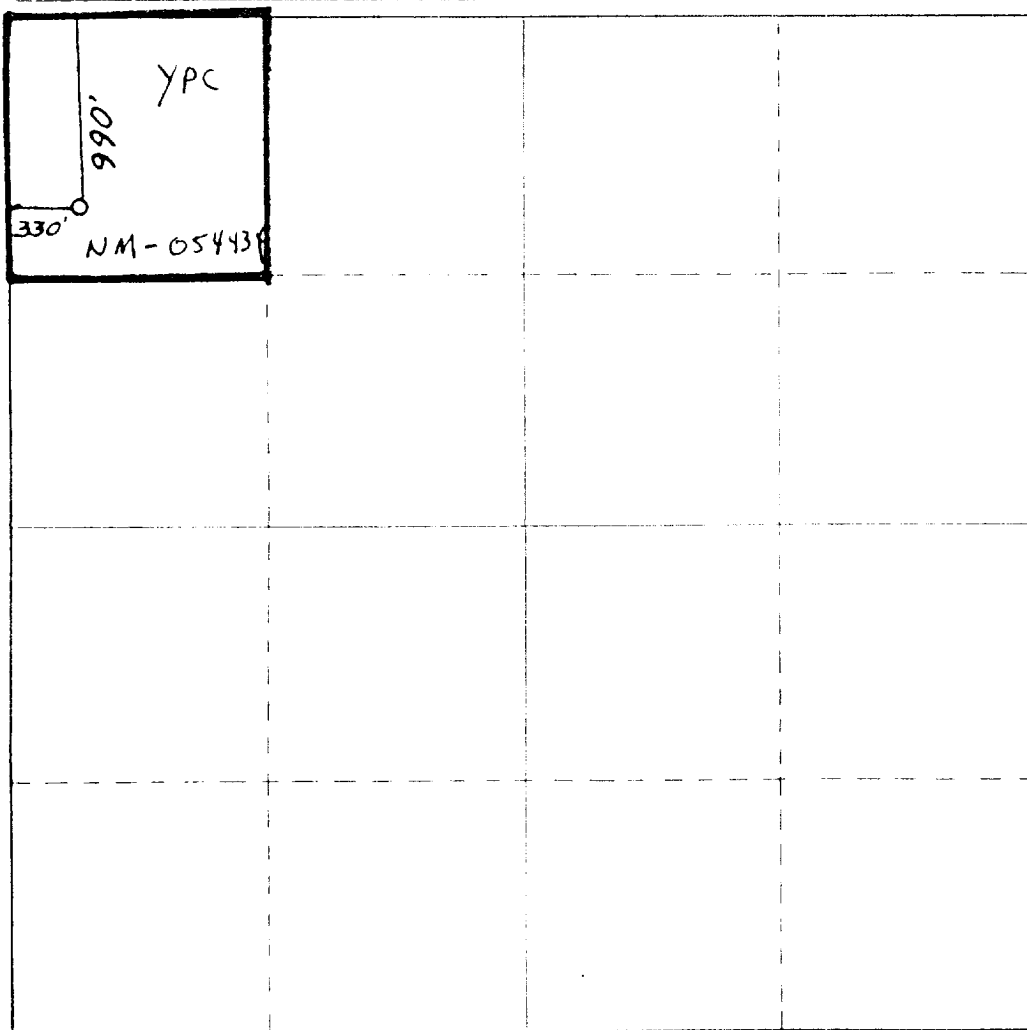
YATES PETROLEUM CORPORATION			Federal BQ		Well No. 9
D	27	17 South	25 East	Eddy	
990		North	330	West	
3544	San Andres	Eagle Creek SA	40		

- Outline the acreage dedicated to the subject well by colored pencil or hachure marks on the plat below.
- If more than one lease is dedicated to the well, outline each and identify the ownership thereof (both as to working interest and royalty).
- If more than one lease of different ownership is dedicated to the well, have the interests of all owners been consolidated by communitization, unitization, force-pooling, etc?

☐ Yes ☐ No If answer is "yes," type of consolidation \_\_\_\_\_

If answer is "no," list the owners and tract descriptions which have actually been consolidated. (Use reverse side of this form if necessary.) \_\_\_\_\_

No allowable will be assigned to the well until all interests have been consolidated (by communitization, unitization, forced-pooling, or otherwise) or until a non-standard unit, eliminating such interests, has been approved by the Commission.



CERTIFICATION

I hereby certify that the information contained herein is true and complete to the best of my knowledge and belief.

*Ken Beardemphl*

Name

Ken Beardemphl

Position

Regulatory Coordinator

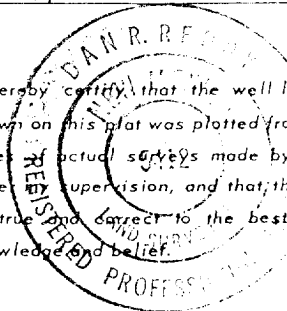
Company

Yates Petroleum Corp.

Date

12/16/82

I hereby certify that the well location shown on this plat was plotted from field notes of actual surveys made by me or under my supervision, and that the same is true and correct to the best of my knowledge and belief.



Date Surveyed

12/15/82

Registered Professional Engineer and Land Surveyor

*Dan R. Reedy*

Certificate No.

NMPE&LS #5412

340 660 980 1300 1620 1940 2260 2580 2900 3220 3540 3860 4180 4500 4820 5140 5460 5780 6100 6420 6740 7060 7380 7700 8020 8340 8660 8980 9300 9620 9940 10260 10580 10900 11220 11540 11860 12180 12500 12820 13140 13460 13780 14100 14420 14740 15060 15380 15700 16020 16340 16660 16980 17300 17620 17940 18260 18580 18900 19220 19540 19860 20180 20500 20820 21140 21460 21780 22100 22420 22740 23060 23380 23700 24020 24340 24660 24980 25300 25620 25940 26260 26580 26900 27220 27540 27860 28180 28500 28820 29140 29460 29780 30100 30420 30740 31060 31380 31700 32020 32340 32660 32980 33300 33620 33940 34260 34580 34900 35220 35540 35860 36180 36500 36820 37140 37460 37780 38100 38420 38740 39060 39380 39700 40020 40340 40660 40980 41300 41620 41940 42260 42580 42900 43220 43540 43860 44180 44500 44820 45140 45460 45780 46100 46420 46740 47060 47380 47700 48020 48340 48660 48980 49300 49620 49940 50260 50580 50900 51220 51540 51860 52180 52500 52820 53140 53460 53780 54100 54420 54740 55060 55380 55700 56020 56340 56660 56980 57300 57620 57940 58260 58580 58900 59220 59540 59860 60180 60500 60820 61140 61460 61780 62100 62420 62740 63060 63380 63700 64020 64340 64660 64980 65300 65620 65940 66260 66580 66900 67220 67540 67860 68180 68500 68820 69140 69460 69780 70100 70420 70740 71060 71380 71700 72020 72340 72660 72980 73300 73620 73940 74260 74580 74900 75220 75540 75860 76180 76500 76820 77140 77460 77780 78100 78420 78740 79060 79380 79700 80020 80340 80660 80980 81300 81620 81940 82260 82580 82900 83220 83540 83860 84180 84500 84820 85140 85460 85780 86100 86420 86740 87060 87380 87700 88020 88340 88660 88980 89300 89620 89940 90260 90580 90900 91220 91540 91860 92180 92500 92820 93140 93460 93780 94100 94420 94740 95060 95380 95700 96020 96340 96660 96980 97300 97620 97940 98260 98580 98900 99220 99540 99860 100180 100500 100820 101140 101460 101780 102100 102420 102740 103060 103380 103700 104020 104340 104660 104980 105300 105620 105940 106260 106580 106900 107220 107540 107860 108180 108500 108820 109140 109460 109780 110100 110420 110740 111060 111380 111700 112020 112340 112660 112980 113300 113620 113940 114260 114580 114900 115220 115540 115860 116180 116500 116820 117140 117460 117780 118100 118420 118740 119060 119380 119700 120020 120340 120660 120980 121300 121620 121940 122260 122580 122900 123220 123540 123860 124180 124500 124820 125140 125460 125780 126100 126420 126740 127060 127380 127700 128020 128340 128660 128980 129300 129620 129940 130260 130580 130900 131220 131540 131860 132180 132500 132820 133140 133460 133780 134100 134420 134740 135060 135380 135700 136020 136340 136660 136980 137300 137620 137940 138260 138580 138900 139220 139540 139860 140180 140500 140820 141140 141460 141780 142100 142420 142740 143060 143380 143700 144020 144340 144660 144980 145300 145620 145940 146260 146580 146900 147220 147540 147860 148180 148500 148820 149140 149460 149780 150100 150420 150740 151060 151380 151700 152020 152340 152660 152980 153300 153620 153940 154260 154580 154900 155220 155540 155860 156180 156500 156820 157140 157460 157780 158100 158420 158740 159060 159380 159700 160020 160340 160660 160980 161300 161620 161940 162260 162580 162900 163220 163540 163860 164180 164500 164820 165140 165460 165780 166100 166420 166740 167060 167380 167700 168020 168340 168660 168980 169300 169620 169940 170260 170580 170900 171220 171540 171860 172180 172500 172820 173140 173460 173780 174100 174420 174740 175060 175380 175700 176020 176340 176660 176980 177300 177620 177940 178260 178580 178900 179220 179540 179860 180180 180500 180820 181140 181460 181780 182100 182420 182740 183060 183380 183700 184020 184340 184660 184980 185300 185620 185940 186260 186580 186900 187220 187540 187860 188180 188500 188820 189140 189460 189780 190100 190420 190740 191060 191380 191700 192020 192340 192660 192980 193300 193620 193940 194260 194580 194900 195220 195540 195860 196180 196500 196820 197140 197460 197780 198100 198420 198740 199060 199380 199700 200020 200340 200660 200980 201300 201620 201940 202260 202580 202900 203220 203540 203860 204180 204500 204820 205140 205460 205780 206100 206420 206740 207060 207380 207700 208020 208340 208660 208980 209300 209620 209940 210260 210580 210900 211220 211540 211860 212180 212500 212820 213140 213460 213780 214100 214420 214740 215060 215380 215700 216020 216340 216660 216980 217300 217620 217940 218260 218580 218900 219220 219540 219860 220180 220500 220820 221140 221460 221780 222100 222420 222740 223060 223380 223700 224020 224340 224660 224980 225300 225620 225940 226260 226580 226900 227220 227540 227860 228180 228500 228820 229140 229460 229780 230100 230420 230740 231060 231380 231700 232020 232340 232660 232980 233300 233620 233940 234260 234580 234900 235220 235540 235860 236180 236500 236820 237140 237460 237780 238100 238420 238740 239060 239380 239700 240020 240340 240660 240980 241300 241620 241940 242260 242580 242900 243220 243540 243860 244180 244500 244820 245140 245460 245780 246100 246420 246740 247060 247380 247700 248020 248340 248660 248980 249300 249620 249940 250260 250580 250900 251220 251540 251860 252180 252500 252820 253140 253460 253780 254100 254420 254740 255060 255380 255700 256020 256340 256660 256980 257300 257620 257940 258260 258580 258900 259220 259540 259860 260180 260500 260820 261140 261460 261780 262100 262420 262740 263060 263380 263700 264020 264340 264660 264980 265300 265620 265940 266260 266580 266900 267220 267540 267860 268180 268500 268820 269140 269460 269780 270100 270420 270740 271060 271380 271700 272020 272340 272660 272980 273300 273620 273940 274260 274580 274900 275220 275540 275860 276180 276500 276820 277140 277460 277780 278100 278420 278740 279060 279380 279700 280020 280340 280660 280980 281300 281620 281940 282260 282580 282900 283220 283540 283860 284180 284500 284820 285140 285460 285780 286100 286420 286740 287060 287380 287700 288020 288340 288660 288980 289300 289620 289940 290260 290580 290900 291220 291540 291860 292180 292500 292820 293140 293460 293780 294100 294420 294740 295060 295380 295700 296020 296340 296660 296980 297300 297620 297940 298260 298580 298900 299220 299540 299860 300180 300500 300820 301140 301460 301780 302100 302420 302740 303060 303380 303700 304020 304340 304660 304980 305300 305620 305940 306260 306580 306900 307220 307540 307860 308180 308500 308820 309140 309460 309780 310100 310420 310740 311060 311380 311700 312020 312340 312660 312980 313300 313620 313940 314260 314580 314900 315220 315540 315860 316180 316500 316820 317140 317460 317780 318100 318420 318740 319060 319380 319700 320020 320340 320660 320980 321300 321620 321940 322260 322580 322900 323220 323540 323860 324180 324500 324820 325140 325460 325780 326100 326420 326740 327060 327380 327700 328020 328340 328660 328980 329300 329620 329940 330260 330580 330900 331220 331540 331860 332180 332500 332820 333140 333460 333780 334100 334420 334740 335060 335380 335700 336020 336340 336660 336980 337300 337620 337940 338260 338580 338900 339220 339540 339860 340180 340500 340820 341140 341460 341780 342100 342420 342740 343060 343380 343700 344020 344340 344660 344980 345300 345620 345940 346260 346580 346900 347220 347540 347860 348180 348500 348820 349140 349460 349780 350100 350420 350740 351060 351380 351700 352020 352340 352660 352980 353300 353620 353940 354260 354580 354900 355220 355540 355860 356180 356500 356820 357140 357460 357780 358100 358420 358740 359060 359380 359700 360020 360340 360660 360980 361300 361620 361940 362260 362580 362900 363220 363540 363860 364180 364500 364820 365140 365460 365780 366100 366420 366740 367060 367380 367700 368020 368340 368660 368980 369300 369620 369940 370260 370580 370900 371220 371540 371860 372180 372500 372820 373140 373460 373780 374100 374420 374740 375060 375380 375700 376020 376340 376660 376980 377300 377620 377940 378260 378580 378900 379220 379540 379860 380180 380500 380820 381140 381460 381780 382100 382420 382740 383060 383380 383700 384020 384340 384660 384980 385300 385620 385940 386260 386580 386900 387220 387540 387860 388180 388500 388820 389140 389460 389780 390100 390420 390740 391060 391380 391700 392020 392340 392660 392980 393300 393620 393940 394260 394580 394900 395220 395540 395860 396180 396500 396820 397140 397460 397780 398100 398420 398740 399060 399380 399700 400020 400340 400660 400980 401300 401620 401940 402260 402580 402900 403220 403540 403860 404180 404500 404820 405140 405460 405780 406100 406420 406740 407060 407380 407700 408020 408340 408660 408980 409300 409620 409940 410260 410580 410900 411220 411540 411860 412180 412500 412820 413140 413460 413780 414100 414420 414740 415060 415380 415700 416020 416340 416660 416980 417300 417620 417940 418260 418580 418900 419220 419540 419860 420180 420500 420820 421140 421460 421780 422100 422420 422740 423060 423380 423700 424020 424340 424660 424980 425300 425620 425940 426260 426580 426900 427220 427540 427860 428180 428500 428820 429140 429460 429780 430100 430420 430740 431060 431380 431700 432020 432340 432660 432980 433300 433620 433940 434260 434580 434900 435220 435540 435860 436180 436500 436820 437140 437460 437780 438100 438420 438740 439060 439380 439700 440020 440340 440660 440980 441300 441620 441940 442260 442580 442900 443220 443540 443860 444180 444500 444820 445140 445460 445780 446100 446420 446740 447060 447380 447700 448020 448340 448660 448980 449300 449620 449940 450260 450580 450900 451220 451540 451860 452180 452500 452820 453140 453460 453780 454100 454420 454740 455060 455380 455700 456020 456340 456660 456980 457300 457620 457940 458260 458580 458900 459220 459540 459860 460180 460500 460820 461140 461460 461780 462100 462420 462740 463060 463380 463700 464020 464340 464660 464980 465300 465620 465940 466260 466580 466900 467220 467540 467860 468180 468500 468820 469140 469460 469780 470100 470420 470740 471060 471380 471700 472020 472340 472660 472980 473300 473620 473940 474260 474580 474900 475220 475540 475860 476180 476500 476820 477140 477460 477780 478100 478420 478740 479060 479380 479700 480020 480340 480660 480980 481300 481620 481940 482260 482580 482900 483220 483540 483860 484180 484500 484820 485140 485460 485780 486100 486420 486740 487060 487380 487700 488020 488340 488660 488980 489300 489620 489940 490260 490580 490900 491220 491540 491860 492180 492500 492820 493140 493460 493780 494100 494420 494740 495060 495380 495700 496020 496340 496660 496980 497300 497620 497940 498260 498580 498900 499220 499540 499860 500180 50

## YATES PETROLEUM CORPORATION

Federal "BQ" #9  
990' FNL and 330' FWL  
Sec. 27-T17S-R25E

In conjunction with Form 9-331C, Application for Permit to Drill subject well, Yates Petroleum Corporation submits the following ten items of pertinent information in accordance with USGS requirements.

1. The geologic surface formation is quaternary alluvium.

2. The estimated total of geologic markers are as follows:

TD appr. 1500'  
\_\_\_\_\_  
\_\_\_\_\_  
\_\_\_\_\_  
\_\_\_\_\_  
\_\_\_\_\_

3. The estimated depths at which anticipated water, oil or gas formations are expected to be encountered:

Water: 150'-250' and 700'-950'

Oil or Gas: San Andres 1300'-1450'

4. Proposed Casing Program: See Form 9-331C.

5. Pressure Control Equipment: See Form 9-331C and Exhibit B.

6. Mud Program: See Form 9-331C.

7. Auxiliary Equipment: Kelly Cock; pit level indicators and flow sensor equipment;  
sub with full-opening valve on floor, drill pipe connection.

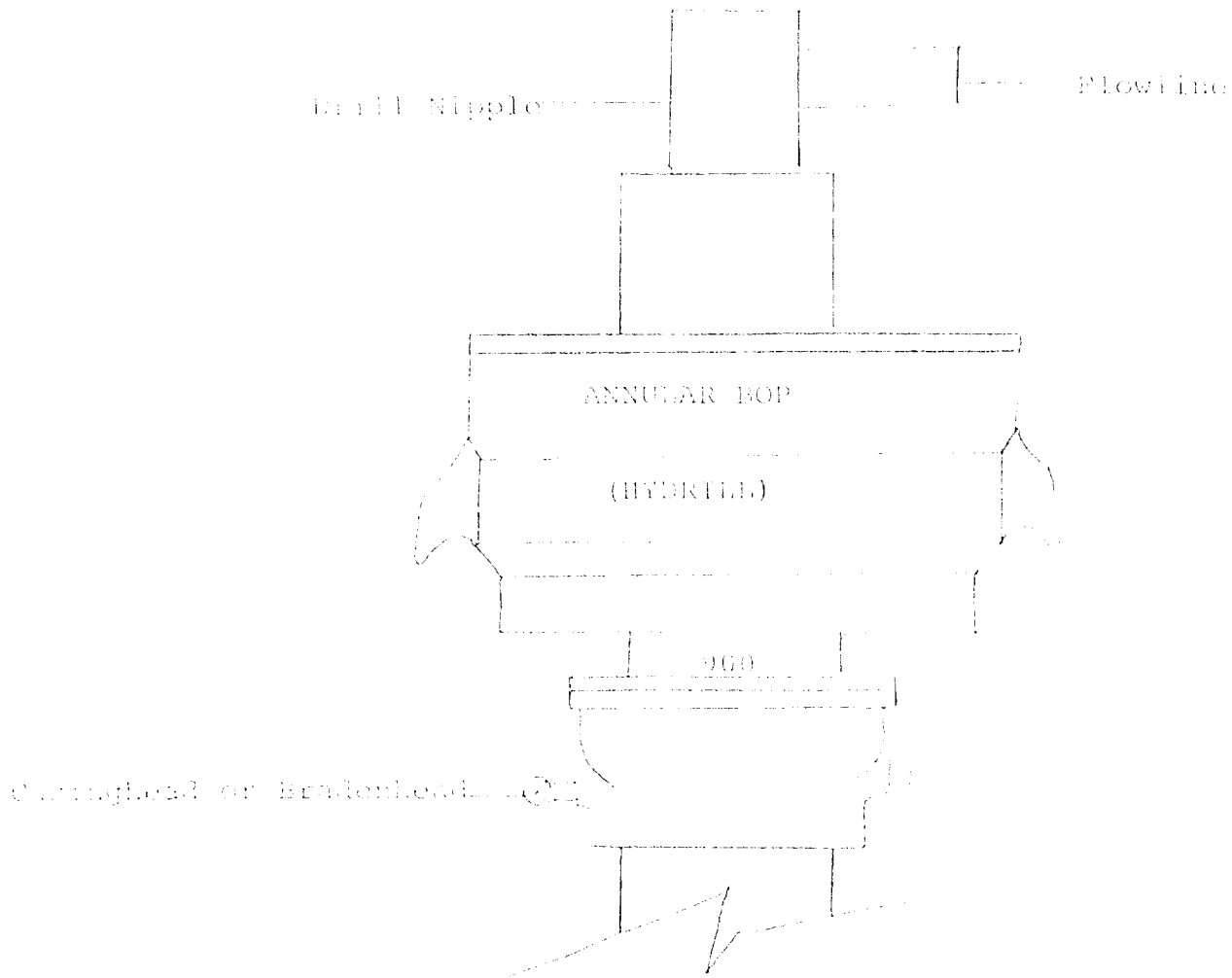
8. Testing, Logging and Coring Program:

Samples: 10' samples out from under surface  
DST's: none  
Coring: none  
Logging: GR/Neutron

9. No abnormal pressures or temperatures are anticipated.

10. Anticipated starting date: As soon as possible after approval.

# Exhibit B



## THE FOLLOWING CONSTITUTE MINIMUM BLOWOUT PREVENTER REQUIREMENTS

1. All preventers to be hydraulically operated with secondary manual controls installed prior to drilling out from under casing.
2. All connections from operating manifolds to preventers to be all steel. Hole or tube a minimum of one inch in diameter.
3. The available closing pressure shall be at least 15% in excess of that required with sufficient volume to operate the BOP's.
4. All connections to and from preventer to have a pressure rating equivalent to that of the BOP's.
5. Hole must be kept filled on trips below intermediate casing.

YATES PETROLEUM CORP.  
Exhibit C

