

UNITED STATES
DEPARTMENT OF THE INTERIOR
GEOLOGICAL SURVEY

Drawer DD

(Other instructions on
reverse side)

Artesia, NM 88210

30-015-24368

c/s 7

5. LEASE DESIGNATION AND SERIAL NO.

NM-0219603

6. IF INDIAN, ALLOTTEE OR TRIBE NAME

7. UNIT AGREEMENT NAME

8. FARM OR LEASE NAME

Federal "BZ"

9. WELL NO.

22

10. FIELD AND POOL, OR WILDCAT

Eagle Creek/SA

11. SEC., T., R., M., OR BLK.
AND SURVEY OR AREA

Sec. 28-T17S-R25E

12. COUNTY OR PARISH 13. STATE

Eddy

NM

APPLICATION FOR PERMIT TO DRILL, DEEPEN, OR PLUG BACK

1a. TYPE OF WORK

DRILL ☒DEEPEN ☐PLUG BACK ☐

RECEIVED

b. TYPE OF WELL

OIL
WELL ☒GAS
WELL ☐

OTHER

SINGLE
ZONE ☐MULTIPLE
ZONE ☐

2. NAME OF OPERATOR

Yates Petroleum Corporation ✓

3. ADDRESS OF OPERATOR

207 S. 4th, Artesia, New Mexico 88210

4. LOCATION OF WELL (Report location clearly and in accordance with any State requirements.)

At surface
990' FNL and 990' FELAt proposed prod. zone
same

14. DISTANCE IN MILES AND DIRECTION FROM NEAREST TOWN OR POST OFFICE*

Approximately 6 miles west of Artesia, New Mexico.

15. DISTANCE FROM PROPOSED*

LOCATION TO NEAREST
PROPERTY OR LEASE LINE, FT.
(Also to nearest drlg. unit line, if any)

990'

16. NO. OF ACRES IN LEASE

17. NO. OF ACRES ASSIGNED
TO THIS WELL

40

18. DISTANCE FROM PROPOSED LOCATION*
TO NEAREST WELL, DRILLING, COMPLETED,
OR APPLIED FOR, ON THIS LEASE, FT.

19. PROPOSED DEPTH

appr. 1500'

20. ROTARY OR CABLE TOOLS

Rotary

21. ELEVATIONS (Show whether DF, RT, GR, etc.)

3555' GL

22. APPROX. DATE WORK WILL START*

ASAP

PROPOSED CASING AND CEMENTING PROGRAM

SIZE OF HOLE	SIZE OF CASING	WEIGHT PER FOOT	SETTING DEPTH	QUANTITY OF CEMENT
14 1/2"	10 3/4"	30#	appr. 320'	200 sx circulated
9 1/2"	7"	23#	appr. 1150'	400 sx circulated
6 1/4"	4 1/2"	9.5#	TD	125 sx circulated

Proposed to drill a San Andres test. Approximately 320' of surface casing will be run to shut off gravel and caving. 7" intermediate casing will be run and set 100' below the Artesian Zone. If commercial production is encountered, a string will be run, perforated and stimulated for production.

MUD PROGRAM: FW gel and LCM to 1150' (or dry drill), water to TD.

BOP PROGRAM: BOP's will be installed on 7" casing and tested daily.

IN ABOVE SPACE DESCRIBE PROPOSED PROGRAM: If proposal is to deepen or plug back, give data on present productive zone and proposed new productive zone. If proposal is to drill or deepen directionally, give pertinent data on subsurface locations and measured and true vertical depths. Give blowout preventer program, if any.

24.

SIGNED

TITLE Regulatory Coordinator DATE 12/16/82

(This space for Federal or State office use)

PERMIT NO.

APPROVAL DATE

APPROVED BY

CONDITIONS OF APPROVAL, IF ANY

APPROVED
(ORIG. SGD.) DAVID R. GLASS
DEC 21 1982

For JAMES A. GILLHAM
DISTRICT SUPERVISOR

RECEIVED

DEC 16 1982

OIL & GAS
MINERALS MGMT. SERVICE
ROSWELL, NEW MEXICO

W MEXICO OIL CONSERVATION COMMISSION
WELL LOCATION AND ACREAGE DEDICATION PLAT

Form C-102
Supersedes C-128
Effective 1-1-65

All distances must be from the outer boundaries of the Section

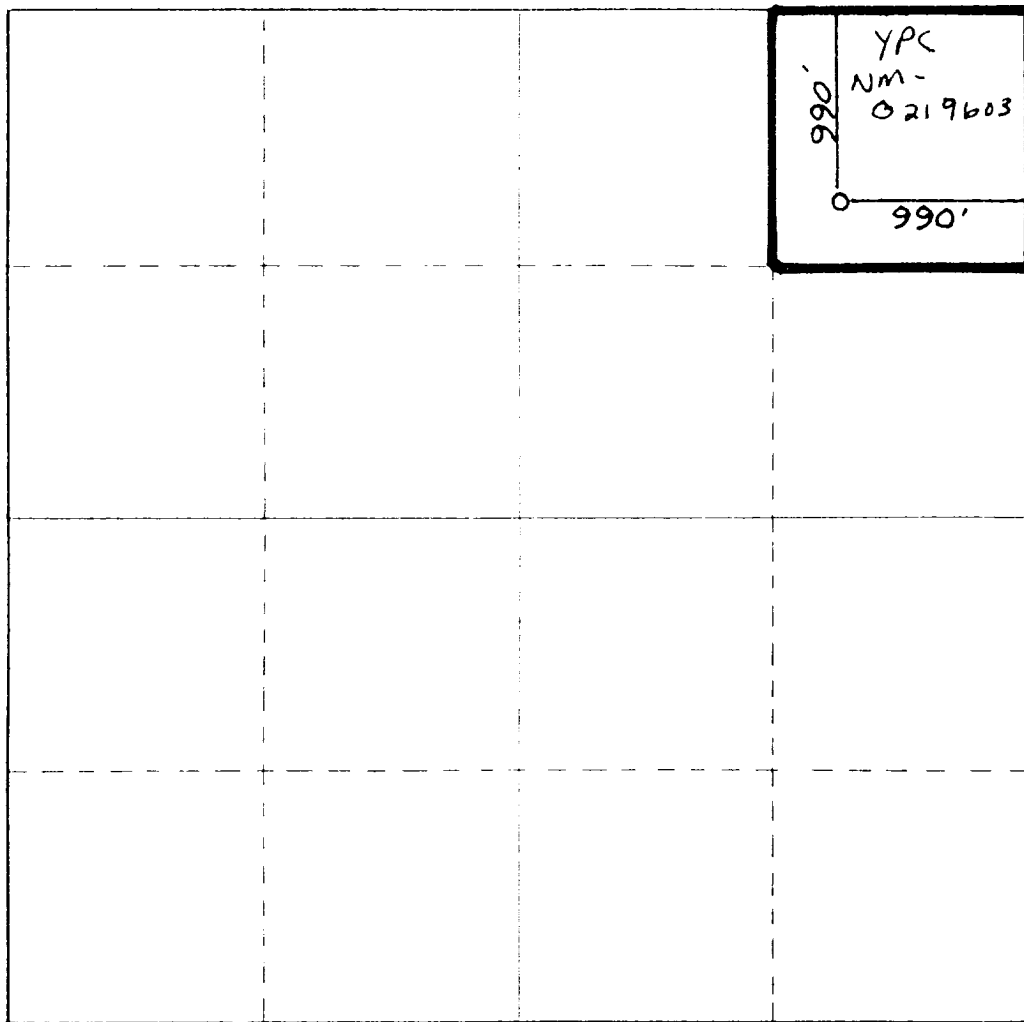
YATES PETROLEUM CORPORATION			Federal BZ		Well No. 22
Section A	Range 28	Township 17 South	Range 25 East	County Eddy	
990		feet from the North	990	feet from the East	
Section 3555.	San Andres		Eagle Creek SA		40 Acres

- Outline the acreage dedicated to the subject well by colored pencil or hatchure marks on the plat below.
- If more than one lease is dedicated to the well, outline each and identify the ownership thereof (both as to working interest and royalty).
- If more than one lease of different ownership is dedicated to the well, have the interests of all owners been consolidated by communitization, unitization, force-pooling, etc?

☐ Yes ☐ No If answer is "yes," type of consolidation _____

If answer is "no," list the owners and tract descriptions which have actually been consolidated. (Use reverse side of this form if necessary.) _____

No allowable will be assigned to the well until all interests have been consolidated (by communitization, unitization, forced-pooling, or otherwise) or until a non-standard unit, eliminating such interests, has been approved by the Commission.



CERTIFICATION

I hereby certify that the information contained herein is true and complete to the best of my knowledge and belief.

Ken Beardemphl
Name

Ken Beardemphl

Position

Regulatory Coordinator

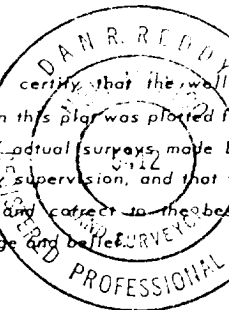
Company

Yates Petroleum Corp.

Date

12/16/82

I hereby certify that the well location shown on this plat was plotted from field notes of actual surveys made by me or under my supervision, and that the same is true and correct to the best of my knowledge and belief.



Date Surveyed

December 15, 1982

Registered Professional Engineer
and/or Land Surveyor

Dan R. Reddy
Certificate No.

NM PE&LS #5412

330 660 990 1320 1650 1980 2310 2640 2970 3300 3630 3960 4290 4620 4950 5280 5610 5940 6270 6600

YATES PETROLEUM CORPORATION

Federal "BZ" #22

990' FNL and 990' FEL

Sec. 28-T17S-R25E

In conjunction with Form 9-331C, Application for Permit to Drill subject well, Yates Petroleum Corporation submits the following ten items of pertinent information in accordance with USGS requirements.

1. The geologic surface formation is quaternary alluvium.
2. The estimated tops of geologic markers are as follows:
TD appr. 1500'

3. The estimated depths at which anticipated water, oil or gas formations are expected to be encountered:
Water: 150'-250' and 700'-950'
Oil or Gas: San Andres 1300'-1450'
4. Proposed Casing Program: See Form 9-331C.
5. Pressure Control Equipment: See Form 9-331C and Exhibit B.
6. Mud Program: See Form 9-331C.
7. Auxiliary Equipment: Kelly Cock; pit level indicators and flow sensor equipment;
sub with full-opening valve on floor, drill pipe connection.
8. Testing, Logging and Coring Program:
Samples: 10' samples from under surface
DST's: none
Coring: none
Logging: GR-Nuetron
9. No abnormal pressures or temperatures are anticipated.
10. Anticipated starting date: As soon as possible after approval.

8~

16

15

14

13

AT 15

Federal

22

23

24

BZ #22

BQ#8

BQ#7

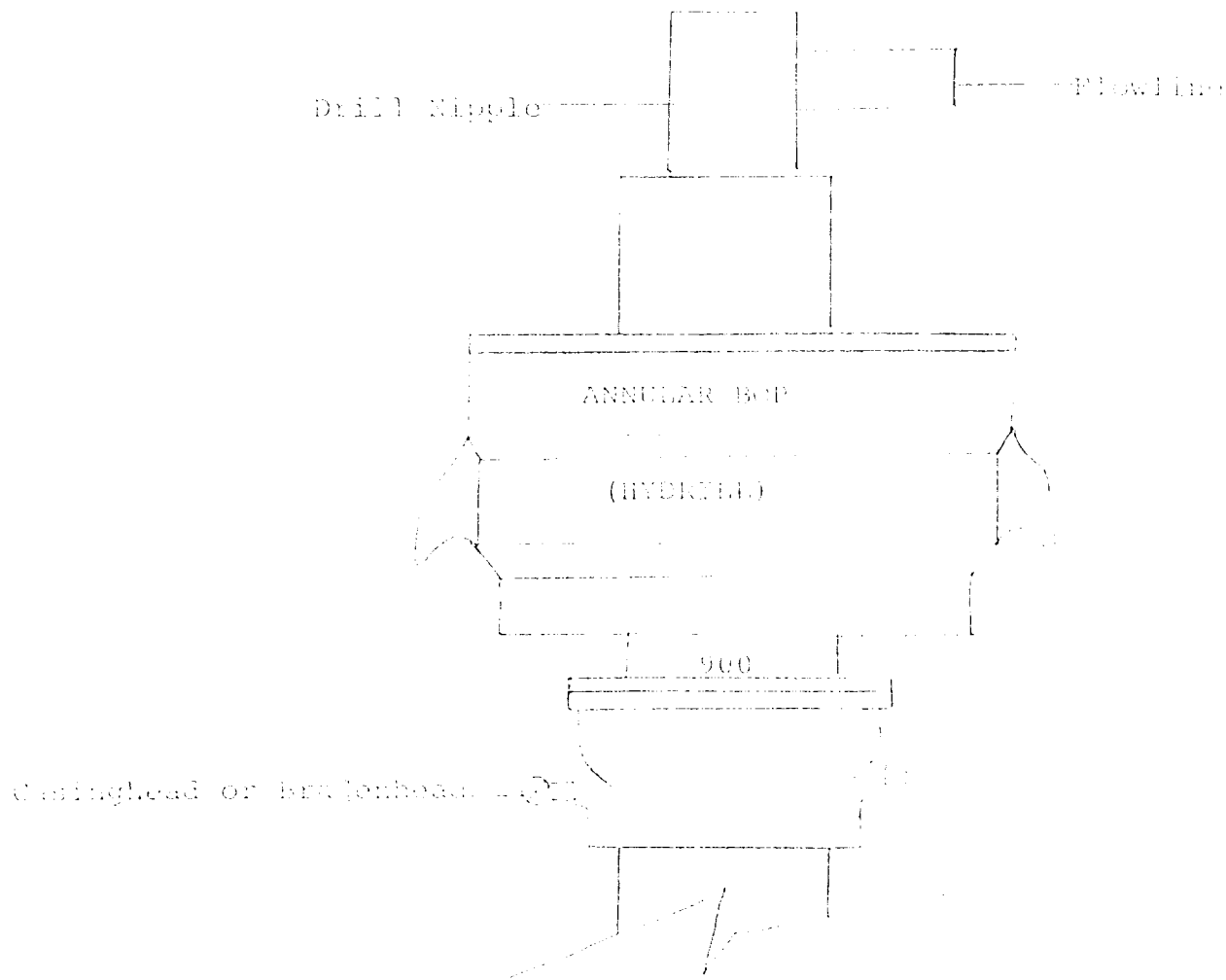
3345

27

28

YPC
FEDERAL "BZ" #22
990' FNL & 990' FEL
Sec. 28 - T17S - R25E
ESDOY COUNTY, NM
EXHIBIT A

Exhibit B



THE FOLLOWING CONSTITUTE MINIMUM BLOWOUT PREVENTER REQUIREMENTS

1. All preventers to be hydraulically operated with secondary manual controls installed prior to drilling out from under casing.
2. All connections from operating manifolds to preventers to be all steel. Hole or tube a minimum of one inch in diameter.
3. The available closing pressure shall be at least 15% in excess of that required with sufficient volume to operate the BOP's.
4. All connections to and from preventer to have a pressure rating equivalent to that of the BOP's.
5. Hole must be kept filled on trips below intermediate casing.

YATES PETROLEUM CORP.

Exhibit C

