

NO. OF COPIES RECEIVED	
DISTRIBUTION	
SANTA FE	✓
FILE	✓
U.S.G.S.	✓
LAND OFFICE	✓
OPERATOR	✓

NEW MEXICO OIL CONSERVATION COMMISSION

RECEIVED

JAN 21 1983

O. C. D.
ARTESIA, OFFICE

Form C-101
Revised 1-1-85

5A. Indicate Type of Lease
STATE ☐ FEE ☒

5. State Oil & Gas Lease No.

APPLICATION FOR PERMIT TO DRILL, DEEPEN, OR PLUG BACK

1a. Type of Work b. Type of Well DRILL <input checked="" type="checkbox"/> DEEPEN <input type="checkbox"/> PLUG BACK <input type="checkbox"/> OIL WELL <input checked="" type="checkbox"/> GAS WELL <input type="checkbox"/> OTHER <input type="checkbox"/> SINGLE ZONE <input type="checkbox"/> MULTIPLE ZONE <input type="checkbox"/>		7. Unit Agreement Name
2. Name of Operator Yates Petroleum Corporation ✓		8. Firm or Lease Name Achen Frey DM
3. Address of Operator 207 S. 4th, Artesia, New Mexico 88210		9. Well No. 9
4. Location of Well UNIT LETTER <u>I</u> LOCATED <u>2310</u> FEET FROM THE <u>South</u> LINE AND <u>990</u> FEET FROM THE <u>East</u> LINE OF SEC. <u>14</u> TWP. <u>17S</u> RGE. <u>25E</u> NMPM		10. Field and Pool, or Wildcat Eagle Creek SA
		11. County Eddy
		12. Formation San Andres
		13. Rotary or C.T. Rotary
14. Elevations (Show whether DE, RT, etc.) 3477'	21A. Kind & Status Plug, Bond Blanket	21B. Drilling Contractor LaRue #2
		22. Approx. Date Work will start ASAP

PROPOSED CASING AND CEMENT PROGRAM

SIZE OF HOLE	SIZE OF CASING	WEIGHT PER FOOT	SETTING DEPTH	SACKS OF CEMENT	EST. TOP
14 1/2"	10 3/4"	32#	appr. 300'	200 sx	circulated
9 1/2"	7"	23#	appr. 1150'	400 sx	circulated
6 1/4"	4 1/2"	9.5#	TD	150 sx	circulated

Propose to drill a San Andres test. Approximately 300' of 10 3/4" casing will be run and cemented to the surface to shut off surface gravel and casing, and 7" casing will be run 100' below the Artesian Zone, cemented to the surface. A tapered oil string will be run and cemented, perforated and sand frac'd for production.

MUD PROGRAM: FW gel/LCM to 1150', (or dry drill), FW to TD.

BOP PROGRAM: BOP's to be installed and tested daily.

Partial ID#
1-28-83
MK + API

APPROVAL VALID FOR 180 DAYS
PERMIT EXPIRES 7-20-83
UNLESS DRILLING UNDERWAY

IN ABOVE SPACE DESCRIBE PROPOSED PROGRAM: IF PROPOSAL IS TO DEEPEN OR PLUG BACK, GIVE DATA ON PRESENT PRODUCTIVE ZONE AND PROPOSED NEW PRODUCTIVE ZONE. GIVE BLOWOUT PREVENTER PROGRAM, IF ANY.

I hereby certify that the information above is true and complete to the best of my knowledge and belief.

Signed Cy Roman Title Regulatory Agent Date 1/21/83
(This space for State Use)

APPROVED BY Mike Walker TITLE OIL AND GAS INSPECTOR DATE JAN 21 1983
CONDITIONS OF APPROVAL, IF ANY: Notify N.M.O.C.C. in sufficient time to witness cementing the casing

NEW MEXICO OIL CONSERVATION COMMISSION
WELL LOCATION AND ACREAGE DEDICATION PLAT

Form C-102
Supersedes C-128
Effective 1-1-65

All distances must be from the outer boundaries of the Section.

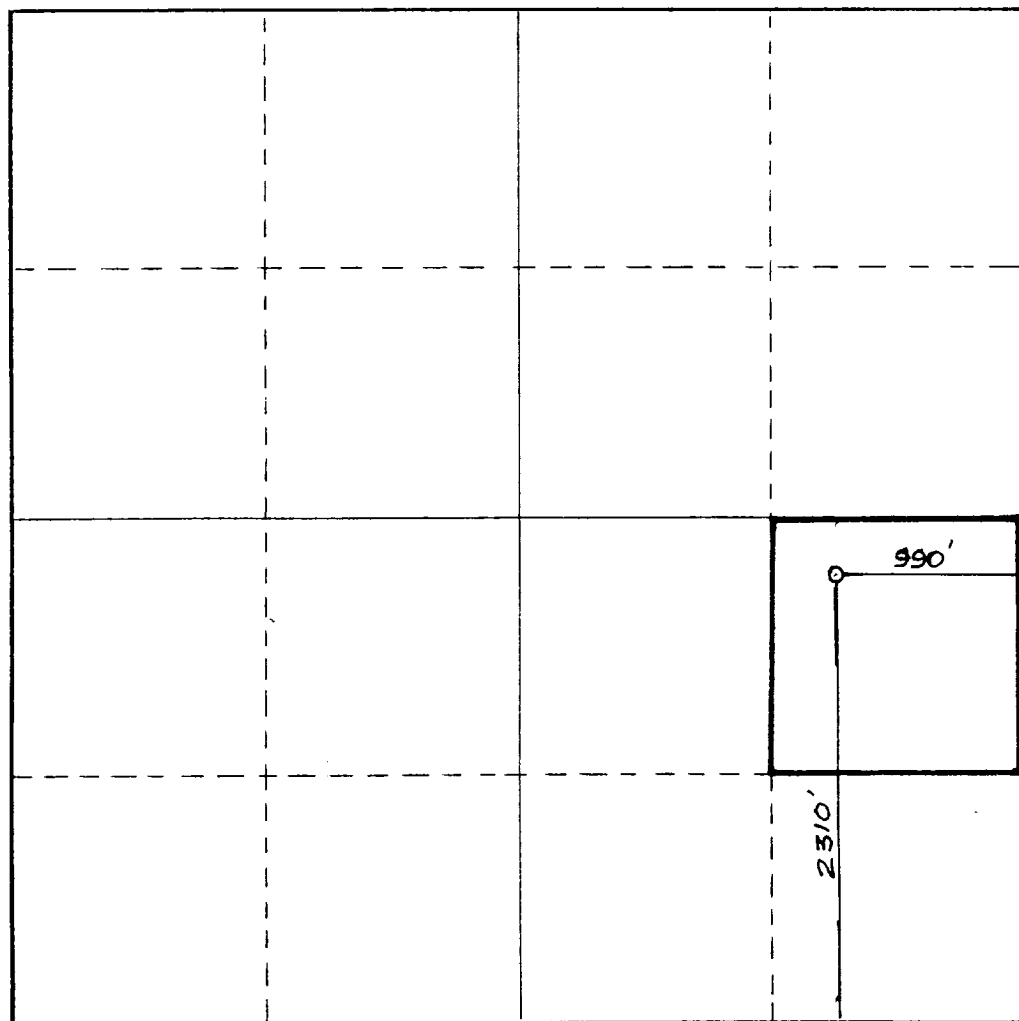
Operator YATES PETROLEUM CORPORATION			Lease Achen Frey DM		Well No. 9
Unit Letter I	Section 14	Township 17 South	Range 25 East	County Eddy	
Actual Footage Location of Well: 2310 feet from the South line and 990 feet from the East line					
Ground Level Elev. 3477.	Producing Formation SAN ANDRES		Pool EAGLE CREEK (SA)	Dedicated Acreage: 40 Acres	

- Outline the acreage dedicated to the subject well by colored pencil or hachure marks on the plat below.
- If more than one lease is dedicated to the well, outline each and identify the ownership thereof (both as to working interest and royalty).
- If more than one lease of different ownership is dedicated to the well, have the interests of all owners been consolidated by communitization, unitization, force-pooling, etc?

☐ Yes ☒ No If answer is "yes," type of consolidation _____

If answer is "no," list the owners and tract descriptions which have actually been consolidated. (Use reverse side of this form if necessary.) _____

No allowable will be assigned to the well until all interests have been consolidated (by communitization, unitization, forced-pooling, or otherwise) or until a non-standard unit, eliminating such interests, has been approved by the Commission.



CERTIFICATION

I hereby certify that the information contained herein is true and complete to the best of my knowledge and belief.

Cy Cowan
Name

Cy Cowan

Position

Regulatory Agent

Company

Yates Petroleum Corp.

Date

1/21/83

I hereby certify that the well location shown on this plat was plotted from field notes of actual surveys made by me or under my supervision, and that the same is true and correct to the best of my knowledge and belief.

Date Surveyed

January 15, 1983

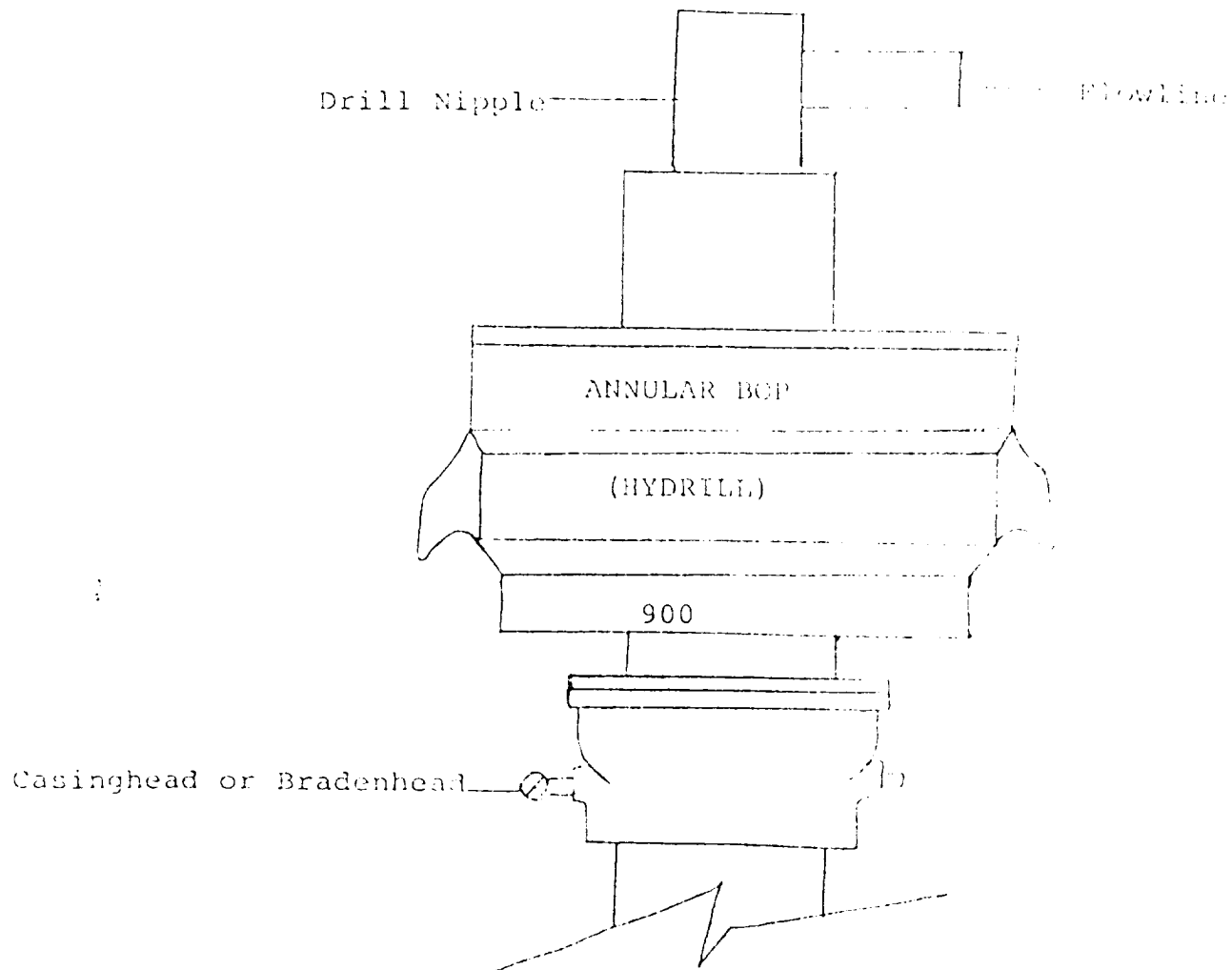
Registered Professional Engineer and/or Land Surveyor

Dan R. Reddy

Certificate No.

NM PE&LS #5412

0 330 660 990 1320 1650 1980 2310 2640 2000 1500 1000 500 0



THE FOLLOWING CONSTITUTE MINIMUM BLOWOUT PREVENTER REQUIREMENTS

1. All preventers to be hydraulically operated with secondary manual controls installed prior to drilling out from under casing.
2. All connections from operating manifolds to preventers to be all steel. Hole or tube a minimum of one inch in diameter.
3. The available closing pressure shall be at least 15% in excess of that required with sufficient volume to operate the BOP's.
4. All connections to and from preventer to have a pressure rating equivalent to that of the BOP's.
5. Hole must be kept filled on trips below intermediate casing.