

30-015-24553

C187

UNITED STATES  
DEPARTMENT OF THE INTERIOR  
GEOLOGICAL SURVEY  
NEW OIL CONS. COMMISSION  
Artesia, NM 88210

## APPLICATION FOR PERMIT TO DRILL, DEEPEN, OR PLUG BACK

## 1a. TYPE OF WORK

DRILL ☒

AUG 03 1983

DEEPEN ☐ PLUG BACK ☐

## b. TYPE OF WELL

OIL  
WELL ☒GAS  
WELL ☐OTHER ☐O. C. D. SINGLE ☐MULTIPLE ☐

## 2. NAME OF OPERATOR

Yates Petroleum Corporation

## 3. ADDRESS OF OPERATOR

207 S. 4th, Artesia, New Mexico 88210

## 4. LOCATION OF WELL (Report location clearly and in accordance with any State requirements.)\*

At surface

1650' FNL and 330' FEL

At proposed prod. zone

same

## 14. DISTANCE IN MILES AND DIRECTION FROM NEAREST TOWN OR POST OFFICE\*

Approximatley 6 miles west of Artesia, NM.

## 15. DISTANCE FROM PROPOSED\*

LOCATION TO NEAREST  
PROPERTY OR LEASE LINE, FT.  
(Also to nearest drlg. unit line, if any)

330'

18. DISTANCE FROM PROPOSED LOCATION\*  
TO NEAREST WELL, DRILLING, COMPLETED,  
OR APPLIED FOR, ON THIS LEASE, FT.

## 16. NO. OF ACRES IN LEASE

## 19. PROPOSED DEPTH

appr. 1500'

17. NO. OF ACRES ASSIGNED  
TO THIS WELL

40

## 20. ROTARY OR CABLE TOOLS

Rotary

## 21. ELEVATIONS (Show whether DF, RT, GR, etc.)

3548' GL

## 22. APPROX. DATE WORK WILL START\*

ASAP

## 23.

## PROPOSED CASING AND CEMENTING PROGRAM

SIZE OF HOLE	SIZE OF CASING	WEIGHT PER FOOT	SETTING DEPTH	QUANTITY OF CEMENT
14 1/2"	10 3/4"	30#	appr. 320'	200 sx circulated
9 1/2"	7"	23#	appr. 1150'	400 sx circulated
6 1/4"	4 1/2"	9.5#	TD	125 sx circulated

Proposed to drill a San Andres test. Approximately 320' of surface casing will be run to shut off gravel and caving. 7" intermediate casing will be run and set 100' below the Artesian Zone. If commercial production is encountered, a string will be run, perforated and stimulated for production.

MUD PROGRAM: FW gel/LCM to 1150' (or dry drill), water to TD.

BOP PROGRAM: BOP's will be installed on 7" casing and tested daily.

IN ABOVE SPACE DESCRIBE PROPOSED PROGRAM: If proposal is to deepen or plug back, give data on present productive zone and proposed new productive zone. If proposal is to drill or deepen directionally, give pertinent data on subsurface locations and measured and true vertical depths. Give blowout preventer program, if any.

## 24.

SIGNED

TITLE Regulatory AgentDATE 7/25/83

(This space for Federal or State office use)

PERMIT NO.

APPROVAL DATE

APPROVED BY

TITLE

DATE

8/2/83

CONDITIONS OF APPROVAL, IF ANY:

V MEXICO OIL CONSERVATION COMMISSION  
WELL LOCATION AND ACREAGE DEDICATION PLAT

Form C-102  
Supersedes C-128  
Effective 1-1-65

All distances must be from the outer boundaries of the Section.

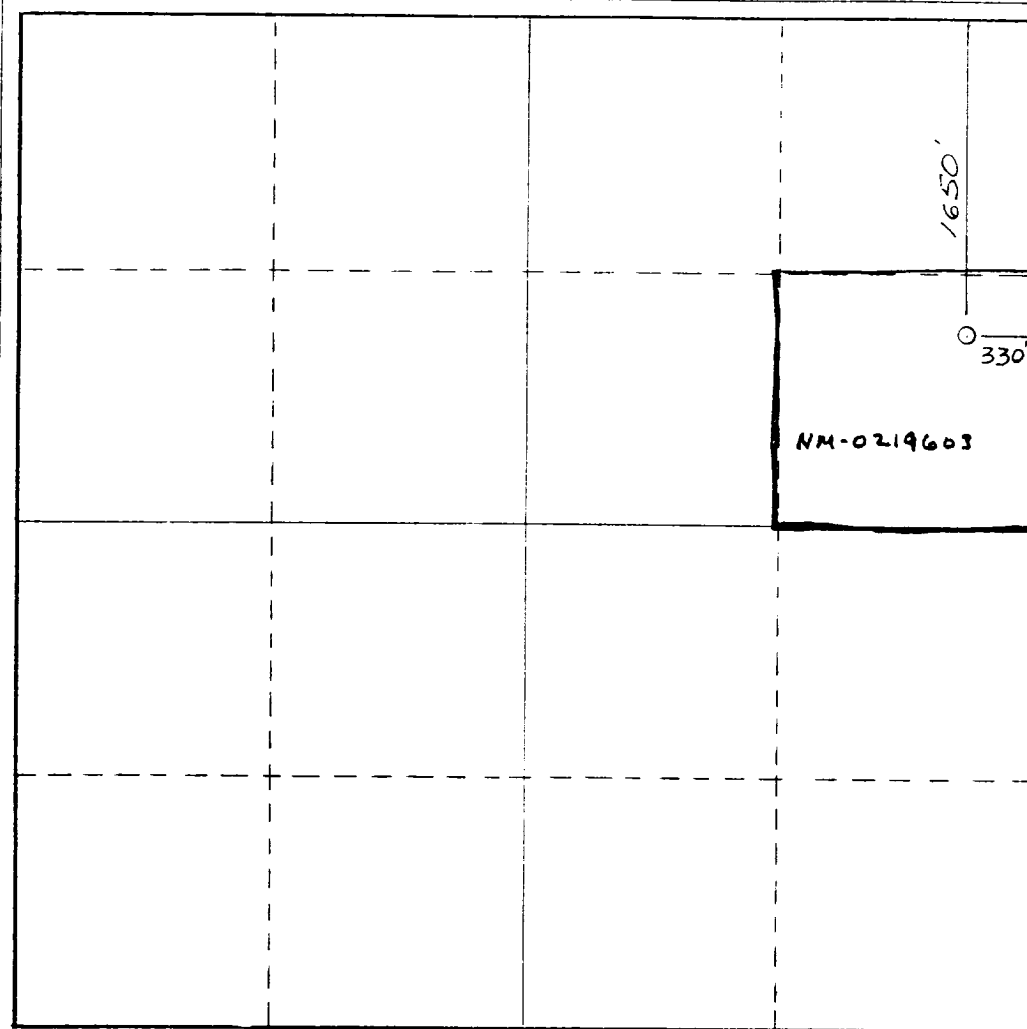
Operator <b>YATES PETROLEUM CORPORATION</b>			Lease <b>Federal BZ</b>		Well No. <b>21</b>
Unit Letter <b>H</b>	Section <b>28</b>	Township <b>17 South</b>	Range <b>25 East</b>	County <b>Eddy</b>	
Actual Footage Location of Well: <b>1650</b> feet from the <b>North</b> line and <b>330</b> feet from the <b>East</b> line					
Ground Level Elev. <b>3548</b>	Producing Formation <b>San Andres</b>		Pool <b>Eagle Creek/San Andres</b>		Dedicated Acreage: <b>40</b> Acres

1. Outline the acreage dedicated to the subject well by colored pencil or hachure marks on the plat below.
2. If more than one lease is dedicated to the well, outline each and identify the ownership thereof (both as to working interest and royalty).
3. If more than one lease of different ownership is dedicated to the well, have the interests of all owners been consolidated by communitization, unitization, force-pooling, etc?

☐ Yes ☐ No If answer is "yes," type of consolidation \_\_\_\_\_

If answer is "no," list the owners and tract descriptions which have actually been consolidated. (Use reverse side of this form if necessary.) \_\_\_\_\_

No allowable will be assigned to the well until all interests have been consolidated (by communitization, unitization, forced-pooling, or otherwise) or until a non-standard unit, eliminating such interests, has been approved by the Commission.



CERTIFICATION

I hereby certify that the information contained herein is true and complete to the best of my knowledge and belief.

*Gliserio Rodriguez*  
Name

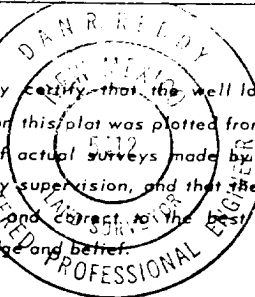
**Gliserio Rodriguez**  
Position

**Regulatory Agent**  
Company

**Yates Petroleum Corp.**  
Date

**7/25/83**

I hereby certify that the well location shown on this plat was plotted from field notes of actual surveys made by me or under my supervision, and that the same is true and correct to the best of my knowledge and belief.



Date Surveyed

**July 22, 1983**

Registered Professional Engineer  
and/or Land Surveyor

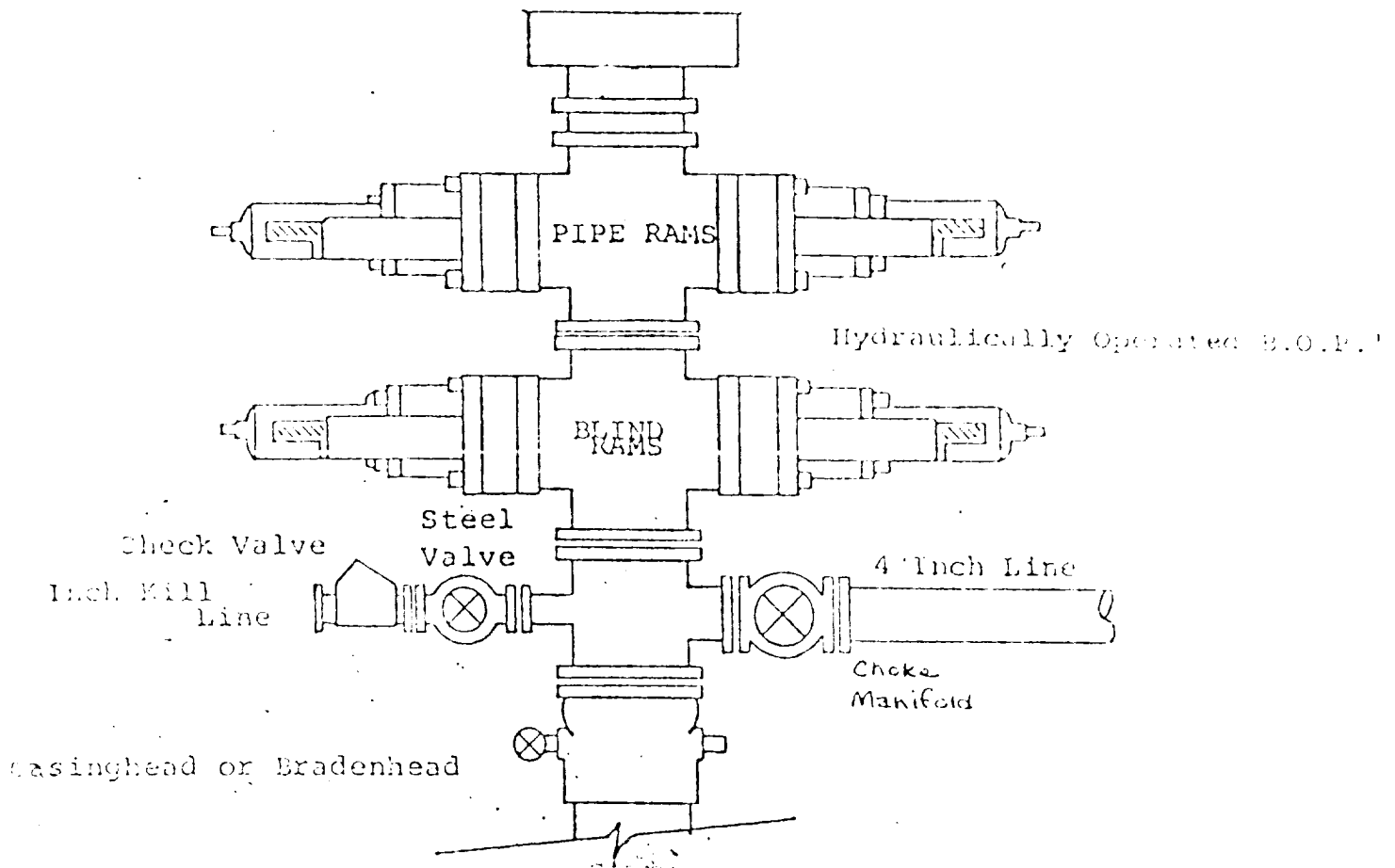
*Dan R. Reddy*  
Certificate No.

**NM PE&LS #5412**

# EXHIBIT B

## BOP DIAGRAM

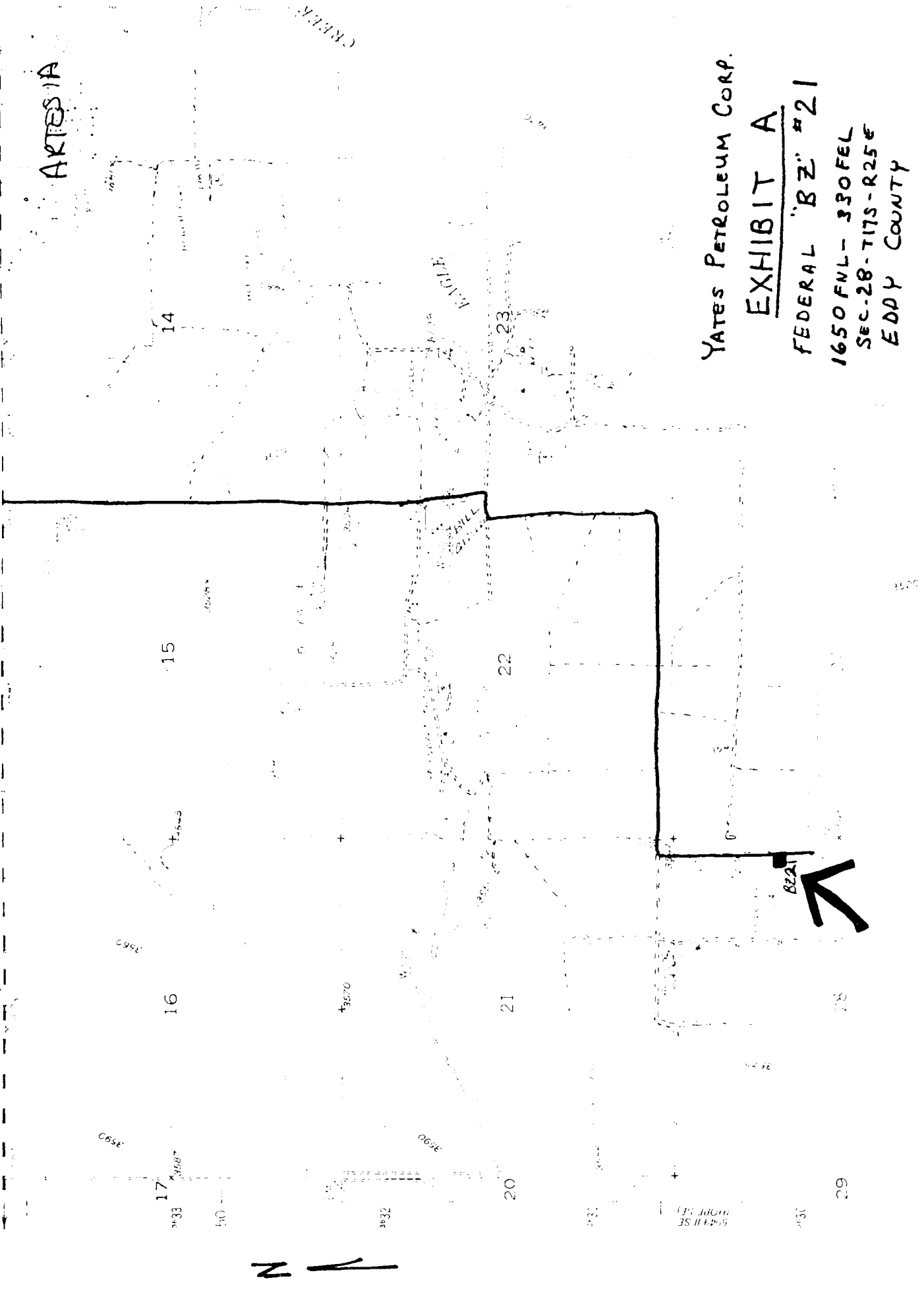
RATED 3000<sup>#</sup>



← HOPE

ARTESIA

N



YATES PETROLEUM CORP.

EXHIBIT A

FEDERAL "BZ" #21

1650 FNL- 330 FEL

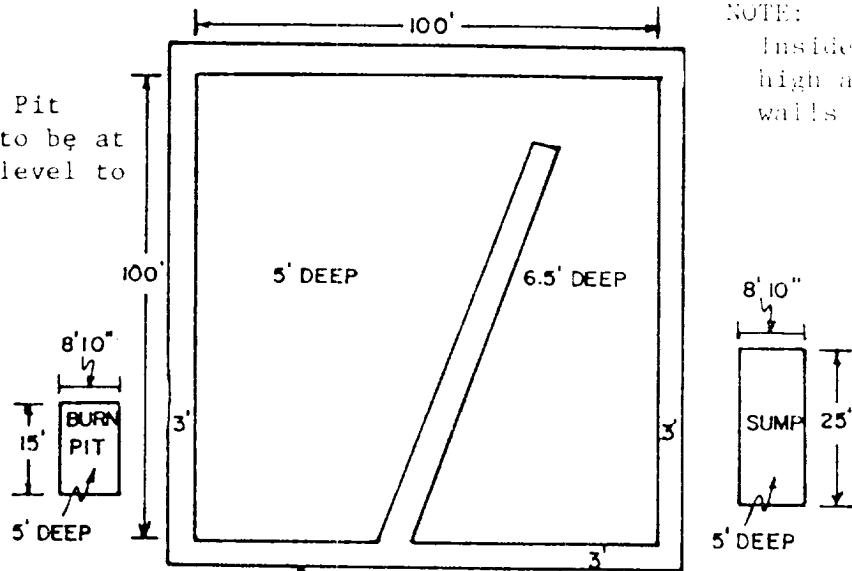
SEC-28-717S-R25E

EDDY COUNTY

# YATES PETROLEUM CORP.

## Exhibit C

Reserve Pit  
bottom to be at  
ground level to  
1 ft.



NOTE:

Inside walls must be as  
high and wide as outer  
walls of pit.

