

UNITED STATES  
DEPARTMENT OF THE INTERIOR  
GEOLOGICAL SURVEYAPPLICATION FOR PERMIT TO DRILL, DEEPEN, OR **PLUG BACK**

## 1. TYPE OF WORK

DRILL ☒DEEPEN ☐PLUG BACK ☐

## 2. TYPE OF WELL

OIL  
WELL ☒GAS  
WELL ☐OTHER ☐SINGLE  
ZONE ☐ARTESIAN OFFICE ☐

## 3. NAME OF OPERATOR

Yates Petroleum Corporation ✓

## 4. ADDRESS OF OPERATOR

207 S. 4th, Artesia, New Mexico 88210

## 5. LOCATION OF WELL (Report location clearly and in accordance with any State requirements.)\*

At surface  
330' FSL and 1650' FSL  
At proposed prod. zone  
same

## 6. DISTANCE IN MILES AND DIRECTION FROM NEAREST TOWN OR POST OFFICE\*

Approximately 6 miles west of Artesia, New Mexico.

## 7. DISTANCE FROM PROPOSED\*

LOCATION TO NEAREST  
PROPERTY OR LEASE LINE, FT.  
(Also to nearest drlg. unit line, if any)

330'

## 8. DISTANCE FROM PROPOSED LOCATION\*

TO NEAREST WELL, DRILLING, COMPLETED,  
OR APPLIED FOR, ON THIS LEASE, FT.

## 9. PROPOSED DEPTH

1500'

## 10. ELEVATIONS (Show whether DF, RT, GR, etc.)

3517.0' GL

## 11.

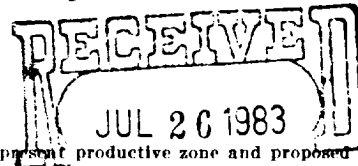
## PROPOSED CASING AND CEMENTING PROGRAM

SIZE OF HOLE	SIZE OF CASING	WEIGHT PER FOOT	SETTING DEPTH	QUANTITY OF CEMENT
14 1/2"	10 3/4"	30#	appr. 320'	200 sx circulated
9 1/2"	7"	23#	appr. 1150'	400 sx circulated
6 1/4"	4 1/2"	9.5#	TD	125 sx circulated

Proposed to drill a San Andres test. Approximately 320' of surface casing will be run to shut off gravel and caving. 7" intermediate casing will be run and set 100' below the Artesian Zone. If commercial production is encountered, a string will be run, perforated and simulated for production.

MUD PROGRAM: FW gel and LCM to 1150' (or dry drill), water to TD.

BOP PROGRAM: BOP's will be installed on 7" casing and tested daily.



IN ABOVE SPACE DESCRIBE PROPOSED PROGRAM: If proposal is to deepen or plug back, give data on present productive zone and proposed new productive zone. If proposal is to drill or deepen directionally, give pertinent data on subsurface locations and measured and true vertical depths. Give blowout preventer program, if any.

## 24.

SIGNED

TITLE Regulatory Agent

ROSWEEL, NEW MEXICO

DATE 7/25/83

(This space for Federal or State office use)

PERMIT NO.

APPROVAL DATE

APPROVED BY

TITLE

DATE

8/2/83

CONDITIONS OF APPROVAL, IF ANY:

Postcard # 10-14-15-16-17-18-19-20-21-22-23-24-25-26-27-28-29-30-31-32-33-34-35-36-37-38-39-40-41-42-43-44-45-46-47-48-49-50-51-52-53-54-55-56-57-58-59-60-61-62-63-64-65-66-67-68-69-70-71-72-73-74-75-76-77-78-79-80-81-82-83-84-85-86-87-88-89-90-91-92-93-94-95-96-97-98-99-100

V MEXICO OIL CONSERVATION COMMISSION  
WELL LOCATION AND ACREAGE DEDICATION PLAT

Form C-102  
Supersedes C-128  
Effective 1-1-65

All distances must be from the outer boundaries of the Section.

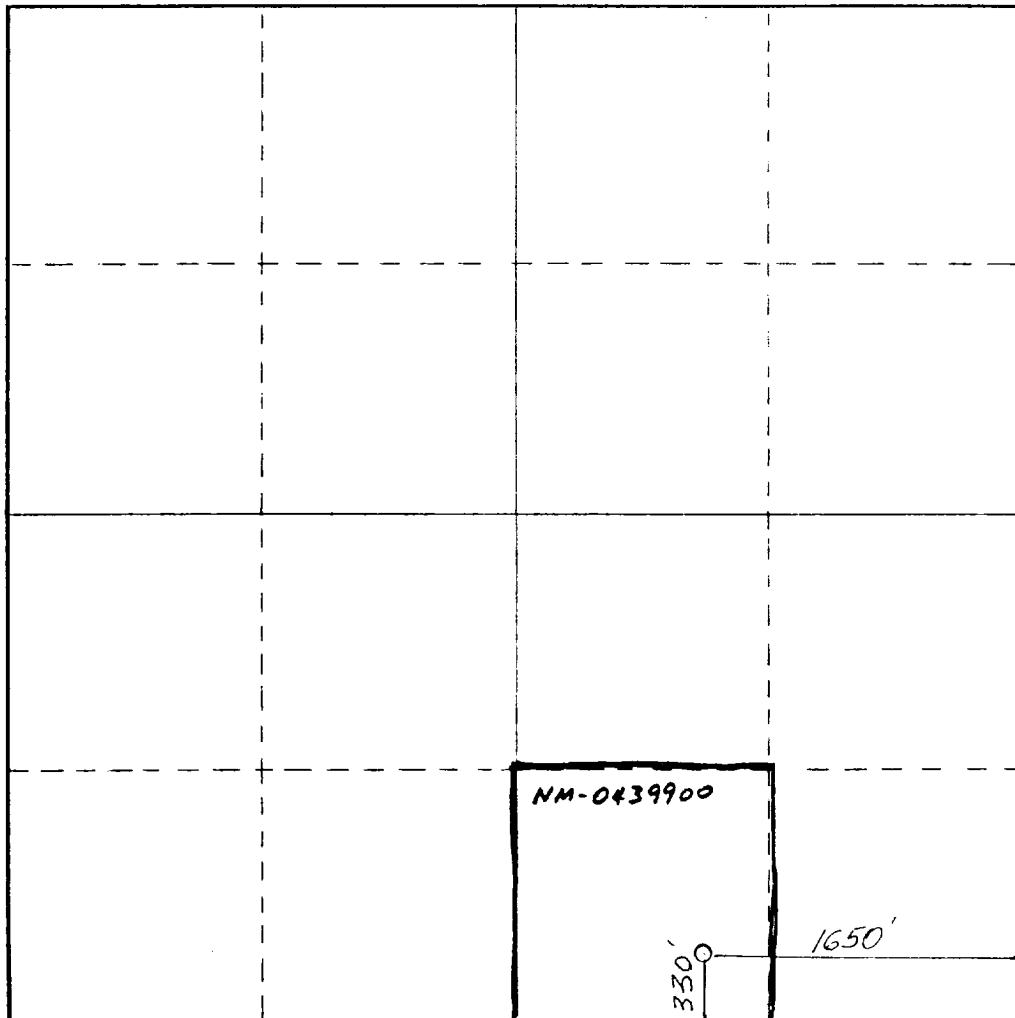
Operator <b>YATES PETROLEUM CORPORATION</b>			Lease <b>Federal CB</b>		Well No. <b>4</b>
Unit Letter <b>O</b>	Section <b>15</b>	Township <b>17 South</b>	Range <b>25 East</b>	County <b>Eddy</b>	
Actual Footage Location of Well: <b>330</b> feet from the <b>South</b> line and <b>1650</b> feet from the <b>East</b> line					
Ground Level Elev. <b>3517</b>	Producing Formation <b>San Andres</b>		Pool <b>Eagle Creek/San Andres</b>		Dedicated Acreage: <b>40</b> Acres

1. Outline the acreage dedicated to the subject well by colored pencil or hachure marks on the plat below.
2. If more than one lease is dedicated to the well, outline each and identify the ownership thereof (both as to working interest and royalty).
3. If more than one lease of different ownership is dedicated to the well, have the interests of all owners been consolidated by communitization, unitization, force-pooling, etc?

☐ Yes ☐ No If answer is "yes," type of consolidation \_\_\_\_\_

If answer is "no," list the owners and tract descriptions which have actually been consolidated. (Use reverse side of this form if necessary.) \_\_\_\_\_

No allowable will be assigned to the well until all interests have been consolidated (by communitization, unitization, forced-pooling, or otherwise) or until a non-standard unit, eliminating such interests, has been approved by the Commission.



CERTIFICATION

I hereby certify that the information contained herein is true and complete to the best of my knowledge and belief.

*Gliserio Rodriguez*  
Name

Gliserio Rodriguez

Position

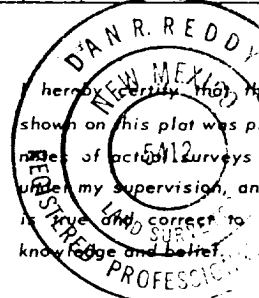
Regulatory Agent

Company

Yates Petroleum Corp.

Date

7/25/83



Date Surveyed

July 24, 1983

Registered Professional Engineer  
and/or Land Surveyor

*Dan R. Reddy*

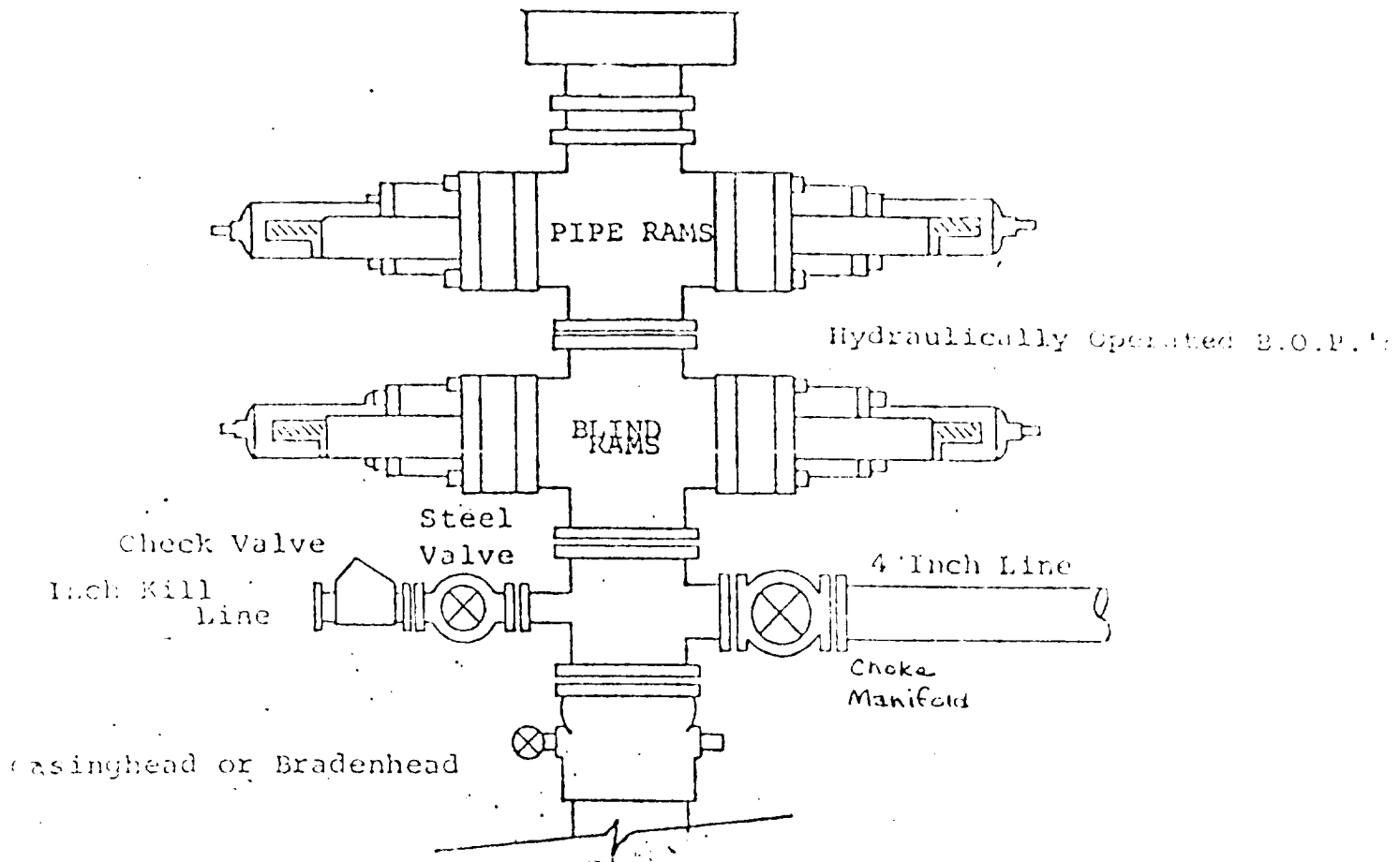
Certificate No.

NM PE&LS 5412

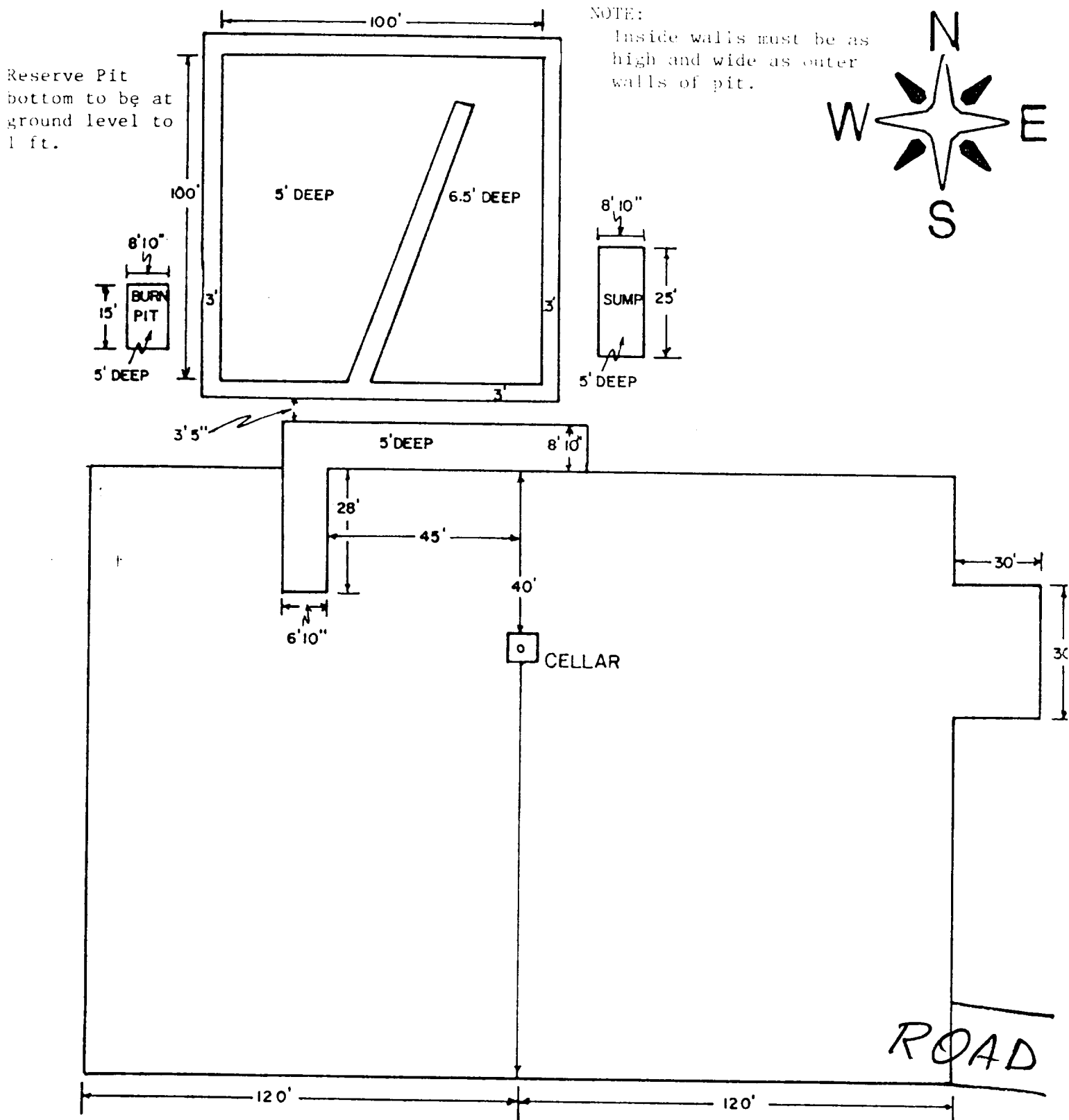
# EXHIBIT B

## BDP DIAGRAM

RATED 3000<sup>#</sup>

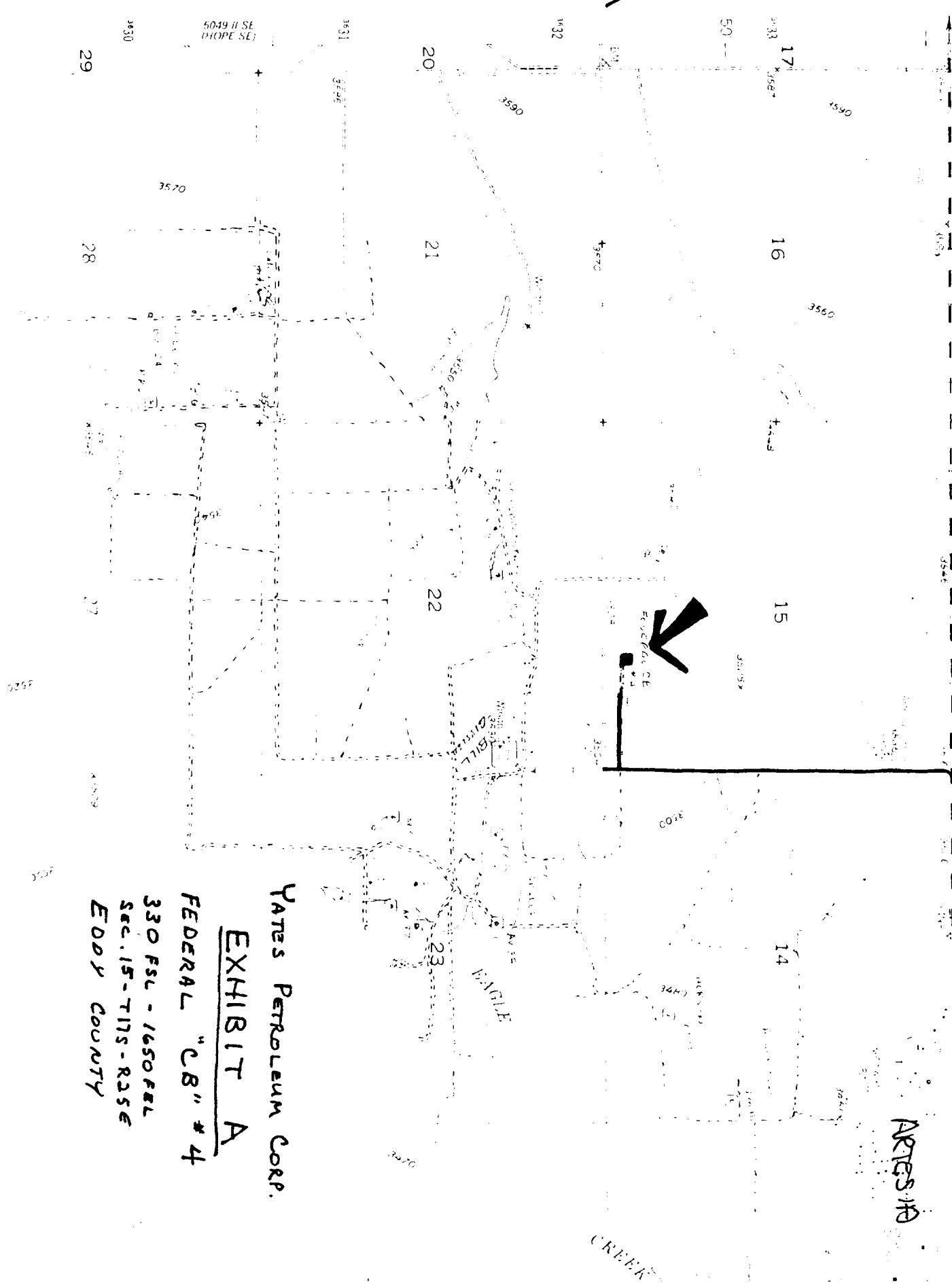


YATES PETROLEUM CORP.  
Exhibit C



4  
HOPE

ARTS 10



YATES PETROLEUM CORP.  
EXHIBIT A  
FEDERAL "CB" # 4  
330 FSL - 1650 FSL  
SEC. 15 - T115 - R25E  
EODY COUNTY