

UNITED STATES
DEPARTMENT OF THE INTERIOR
GEOLOGICAL SURVEY

5. LEASE DESIGNATION AND SERIAL NO.

NM-0630

6. IF INDIAN, ALLOTTEE OR TRIBE NAME

7. UNIT AGREEMENT NAME

8. FARM OR LEASE NAME

Federal LDY

9. WELL NO.

9

10. FIELD AND POOL, OR WILDCAT

Eagle Creek/SA

11. SEC., T., R., M., OR BLK.
AND SURVEY OR AREA

Sec. 27-T17S-R25E

12. COUNTY OR PARISH

Eddy

13. STATE

NM

17. NO. OF ACRES ASSIGNED
TO THIS WELL

40

20. ROTARY OR CABLE TOOLS

Rotary

22. APPROX. DATE WORK WILL START*

ASAP

1a. TYPE OF WORK

DRILL ☒DEEPEN ☐PLUG BACK ☐

b. TYPE OF WELL

OIL
WELL ☒GAS
WELL ☐

OTHER

SINGLE
ZONE ☐MULTIPLE
ZONE ☐

2. NAME OF OPERATOR

Yates Petroleum Corporation ✓

3. ADDRESS OF OPERATOR

207 S. 4th, Artesia, New Mexico 88210

4. LOCATION OF WELL (Report location clearly and in accordance with any State requirements.)*
At surface

2310' FNL and 330' FWL

At proposed prod. zone

same

14. DISTANCE IN MILES AND DIRECTION FROM NEAREST TOWN OR POST OFFICE*

Approximately 3 miles SW of Artesia, NM.

15. DISTANCE FROM PROPOSED*

LOCATION TO NEAREST

PROPERTY OR LEASE LINE, FT.

(Also to nearest drlg. unit line, if any)

330'

18. DISTANCE FROM PROPOSED LOCATION*

TO NEAREST WELL, DRILLING, COMPLETED,
OR APPLIED FOR, ON THIS LEASE, FT.

19. PROPOSED DEPTH

1500'

21. ELEVATIONS (Show whether DF, RT, GR, etc.)

3545' GL

23.

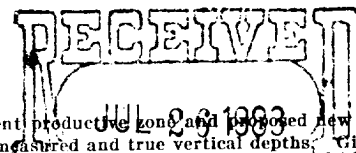
PROPOSED CASING AND CEMENTING PROGRAM

| SIZE OF HOLE | SIZE OF CASING | WEIGHT PER FOOT | SETTING DEPTH | QUANTITY OF CEMENT |
|--------------|----------------|-----------------|---------------|--------------------|
| 14 1/2" | 10 3/4" | 30# | appr. 320' | 200 sx circulated |
| 9 1/2" | 7" | 23# | appr. 1150' | 400 sx circulated |
| 6 1/4" | 4 1/2" | 9.5# | TD | 125 sx circulated |

Proposed to drill a San Andres test with approximately 320' of surface casing to shut off gravel and caving. 7" intermediate casing will be run and set 100' below the Artesian Zone and if commercial production is encountered, a string will be run, perforated and stimulated for production.

MUD PROGRAM: FW gel/LCM to 1190' (or dry drill), water to TD.

BOP PROGRAM: BOP's will be installed on 7" casing and tested daily.



IN ABOVE SPACE DESCRIBE PROPOSED PROGRAM: If proposal is to deepen or plug back, give data on present productive zone and proposed new productive zone. If proposal is to drill or deepen directionally, give pertinent data on subsurface locations and measured and true vertical depths. Give blowout preventer program, if any.

24.

SIGNED

TITLE Regulatory Agent

ROSWELL, NEW MEXICO 7/25/83

(This space for Federal or State office use)

PERMIT NO.

APPROVAL DATE

APPROVED BY

TITLE

DATE

8/2/83

CONDITIONS OF APPROVAL, IF ANY:

NEW MEXICO OIL CONSERVATION COMMISSION
WELL LOCATION AND ACREAGE DEDICATION PLAT

Form C-102
Supersedes C-128
Effective 1-1-65

All distances must be from the outer boundaries of the Section.

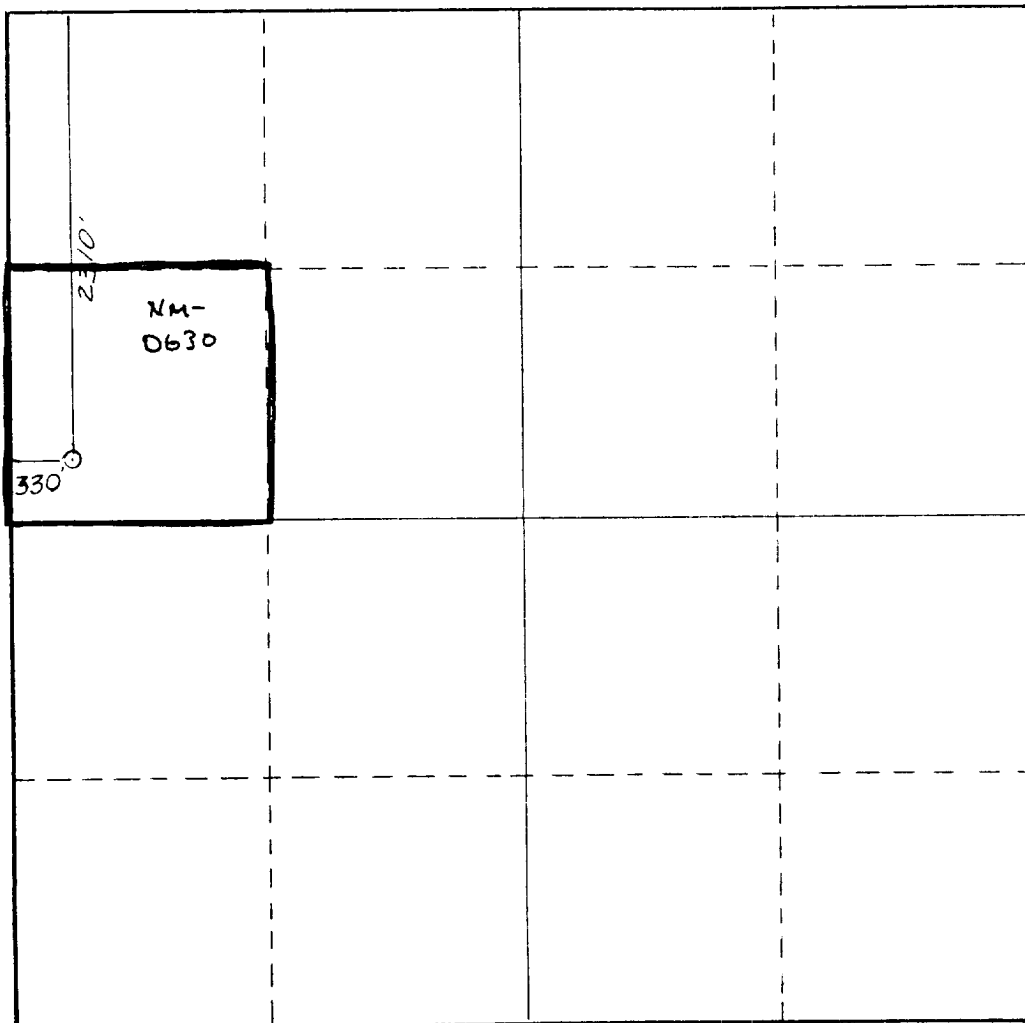
| | | | | | |
|---|--|-----------------------------|---------------------------------------|-----------------------|---------------------------------------|
| Operator YATES PETROLEUM CORPORATION | | | Lease Federal LDY | | Well No. 9 |
| Unit Letter E | Section 27 | Township 17 South | Range 25 East | County Eddy | |
| Actual Footage Location of Well: 2310 feet from the North line and 330 feet from the West line | | | | | |
| Ground Level Elev. 3545 | Producing Formation San Andres | | Pool Eagle Creek/San Andres | | Dedicated Acreage: 40 Acres |

1. Outline the acreage dedicated to the subject well by colored pencil or hachure marks on the plat below.
2. If more than one lease is dedicated to the well, outline each and identify the ownership thereof (both as to working interest and royalty).
3. If more than one lease of different ownership is dedicated to the well, have the interests of all owners been consolidated by communitization, unitization, force-pooling, etc?

☐ Yes ☐ No If answer is "yes," type of consolidation _____

If answer is "no," list the owners and tract descriptions which have actually been consolidated. (Use reverse side of this form if necessary.) _____

No allowable will be assigned to the well until all interests have been consolidated (by communitization, unitization, forced-pooling, or otherwise) or until a non-standard unit, eliminating such interests, has been approved by the Commission.



CERTIFICATION

I hereby certify that the information contained herein is true and complete to the best of my knowledge and belief.

Glisiero Rodriguez
Name

Glisiero Rodriguez
Position

Regulatory Agent

Company

Yates Petroleum Corp.

Date

7/25/83

I hereby certify that the well location shown on this plat was plotted from field notes of actual surveys made by me or under my supervision, and that the same is true and correct to the best of my knowledge and belief.

Date Surveyed

July 22, 1983

Registered Professional Engineer and/or Land Surveyor

Dan R. Reddy
Certificate No.

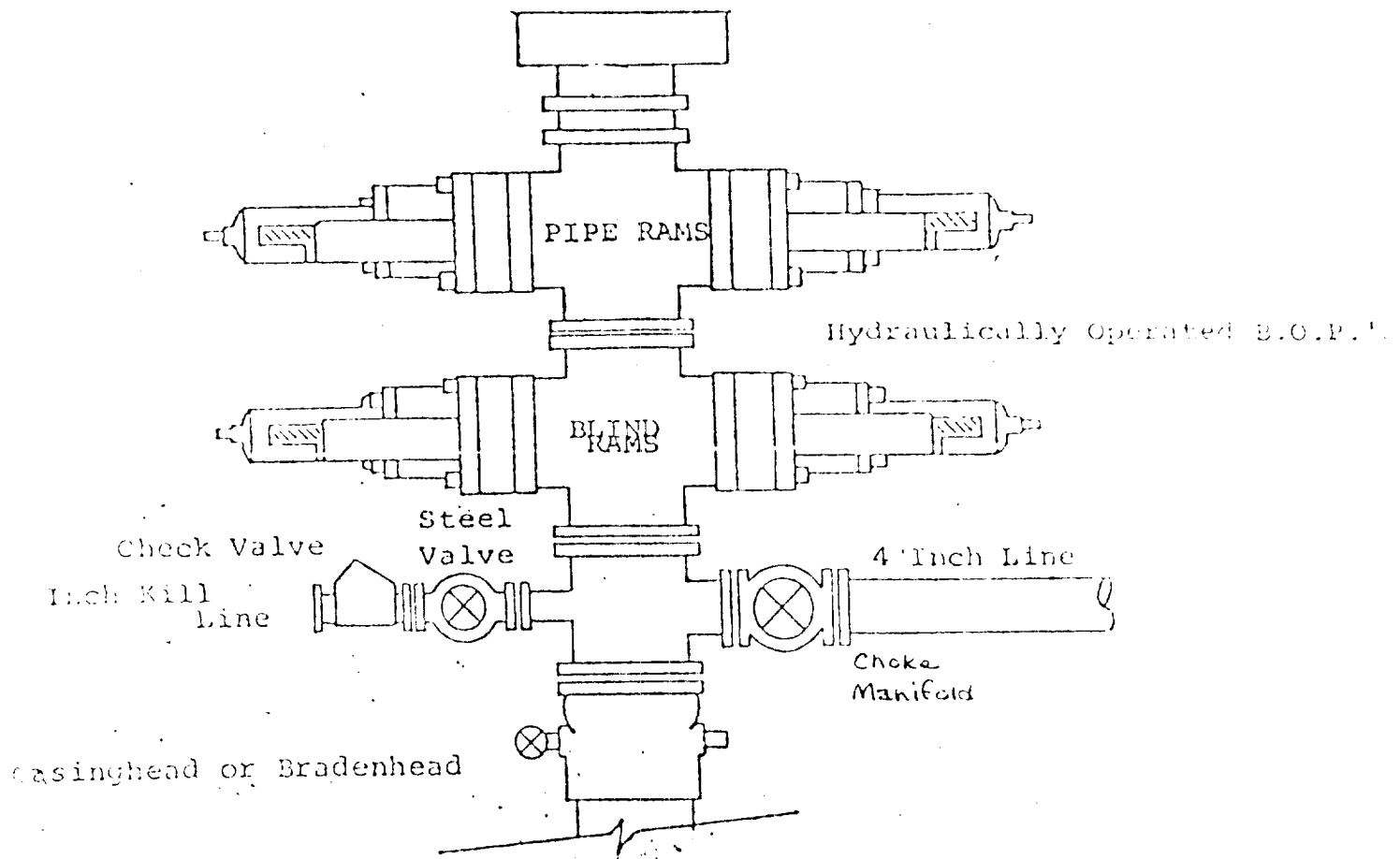
NM PE&LS #5412

0 330 660 990 1320 1650 1980 2310 2640 2000 1500 1000 500 0

EXHIBIT B

BDP DIAGRAM

RATED 3000[#]



YATES PETROLEUM CORPORATION
Federal LDY #9
2310' FNL and 330' FWL
Sec. 27-T17S-R25E

In conjunction with Form 9-331C, Application for Permit to Drill subject well, Yates Petroleum Corporation submits the following ten items of pertinent information in accordance with USGS requirements.

1. The geologic surface formation is quaternary alluvium.
2. The estimated tops of geologic markers are as follows:

TD - San Andres 780'
3. The estimated depths at which anticipated water, oil or gas formations are expected to be encountered:

Water: 150-250' 700-950'

Oil or Gas: San Andres 1300-1450'
4. Proposed Casing Program: See Form 9-331C.
5. Pressure Control Equipment: See Form 9-331C.
6. Mud Program: See Form 9-331C.
7. Auxiliary Equipment: Kelly Cock; pit level indicators and flow sensor equipment; sub with full-opening valve on floor, drill pipe connection.
8. Testing, Logging and Coring Program:

Samples: 10' samples from under surface.
DST's: none
Coring: none
Logging: GR-Nuetron
9. No abnormal pressures or temperatures are anticipated.
10. Anticipated starting date: As soon as possible after approval.

ARTESIA

YATES PETROLEUM CORP.

EXHIBIT A

FEDERAL "LOY" #9

2310' FNL - 330' FWL

SEC 27 T17S-R25E

EDDY COUNTY

YATES PETROLEUM CORP.

Exhibit C

