

STATE OF NEW MEXICO
ENERGY AND MINERALS DEPARTMENTOIL CONSERVATION DIVISION
P.O. BOX 2088
SANTA FE, NEW MEXICO 87501Form C-101
Revised 1-1-65

| | |
|------------------------|-------------------------------------|
| NO. OF COPIES RECEIVED | |
| DISTRIBUTION | |
| SANTA FE | <input checked="" type="checkbox"/> |
| FILE | <input checked="" type="checkbox"/> |
| U.S.G.S. | <input checked="" type="checkbox"/> |
| AND OFFICE | <input checked="" type="checkbox"/> |
| OPERATOR | <input checked="" type="checkbox"/> |

AUG 09 1983

O. C. D.
ARTESIA, OFFICE5A. Indicate Type of Lease
STATE ☒ FEE ☐5. State Oil & Gas Lease No.
E-5668XXXXXXXXXXXXXXXXXXXXXXXXXXXX
XXXXXXXXXXXXXXXXXXXXXXXXXXXX

7. Unit Agreement Name

8. Farm or Lease Name
Getty Mesa9. Well No.
110. Field and Pool, or Wildcat
Und. Bunker Hill PenroseXXXXXXXXXXXXXXXXXXXXXXXXXXXX
XXXXXXXXXXXXXXXXXXXXXXXXXXXX12. County
EddyXXXXXXXXXXXXXXXXXXXXXXXXXXXX
XXXXXXXXXXXXXXXXXXXXXXXXXXXX19. Proposed Depth
4250'19A. Formation
Penrose20. Rotary or C.T.
Rotary

APPLICATION FOR PERMIT TO DRILL, DEEPEN, OR PLUG BACK

1. TYPE OF WORK
DRILL ☒ DEEPEN ☐ PLUG BACK ☐2. TYPE OF WELL
OIL WELL ☒ GAS WELL ☐ OTHER ☐ SINGLE ZONE ☐ MULTIPLE ZONE ☐Name of Operator
Read & Stevens, Inc. ✓Address of Operator
P.O. Box 1518, Roswell, NM 88201Location of Well
UNIT LETTER I LOCATED 1980 FEET FROM THE South LINE

ID 660 FEET FROM THE East LINE OF SEC. 14 TWP. 16S RGE. 31E NMPM

XXXXXXXXXXXXXXXXXXXXXXXXXXXX
XX
XX
XXXXXXXXXXXXXXXXXXXXXXXXXXXX

Elevations (Show whether DF, RT, etc.) 4396.6' GR 21A. Kind & Status Plug, Bond Statewide 21B. Drilling Contractor Sierra Drilg. Co. Rig #5 22. Approx. Date Work will start September 15, 1983

PROPOSED CASING AND CEMENT PROGRAM

| SIZE OF HOLE | SIZE OF CASING | WEIGHT PER FOOT | SETTING DEPTH | SACKS OF CEMENT | EST. TOP |
|--------------|----------------|-----------------|---------------|-----------------|----------|
| 11" | 8 5/8" | 24# | 1300' | 500sx | Circ. |
| 7 7/8" | 4 1/2" | 10.5# | 4250' | 600sx | 3000' |

We propose to drill and test the Penrose Sand formation. Approximately 1300' of 8 5/8" surface casing will be set to protect fresh water sands. Cement will be circulated. If the well is commercial, 4 1/2" production casing will be run and cemented to cover the pay zone with at least 600' of cement.

Mud Program: Native mud to 1300', brine 1300' to 3500', brine and starch 3500' to TD.

BOP Program: One 11" 5000psi WP Shaffer Type "LWS" Hydraulic operated, double BOP w/NL-Shaffer D05040-3S BOP control unit with 40 gal capacity.

APPROVAL VALID FOR 180 DAYS
PERMIT EXPIRES 2/16/84
UNLESS DRILLING UNDERWAY

Pathway 3S
8/15/83
8-12-83

ABOVE SPACE DESCRIBE PROPOSED PROGRAM: IF PROPOSAL IS TO DEEPEN OR PLUG BACK, GIVE DATA ON PRESENT PRODUCTIVE ZONE AND PROPOSED NEW PRODUCTIVE ZONE. GIVE BLOWOUT PREVENTER PROGRAM, IF ANY.

I hereby certify that the information above is true and complete to the best of my knowledge and belief.

GNED Bruce Stollis TITLE Drilling & Production Manager DATE August 4, 1983

(This space for State Use)

Original Signed By
Leslie A. Clements
Supervisor District II

PROVED BY
CONDITIONS OF APPROVAL, IF ANY:

TITLE
Notify N.M.O.C.C. in sufficient
time to witness cementing

DATE AUG 10 1983

the 8 5/8" casing

**NEW MEXICO OIL CONSERVATION COMMISSION
WELL LOCATION AND ACREAGE DEDICATION PLAT**

Form C-102
Supersedes C-128
Effective 1-1-65

All distances must be from the outer boundaries of the Section.

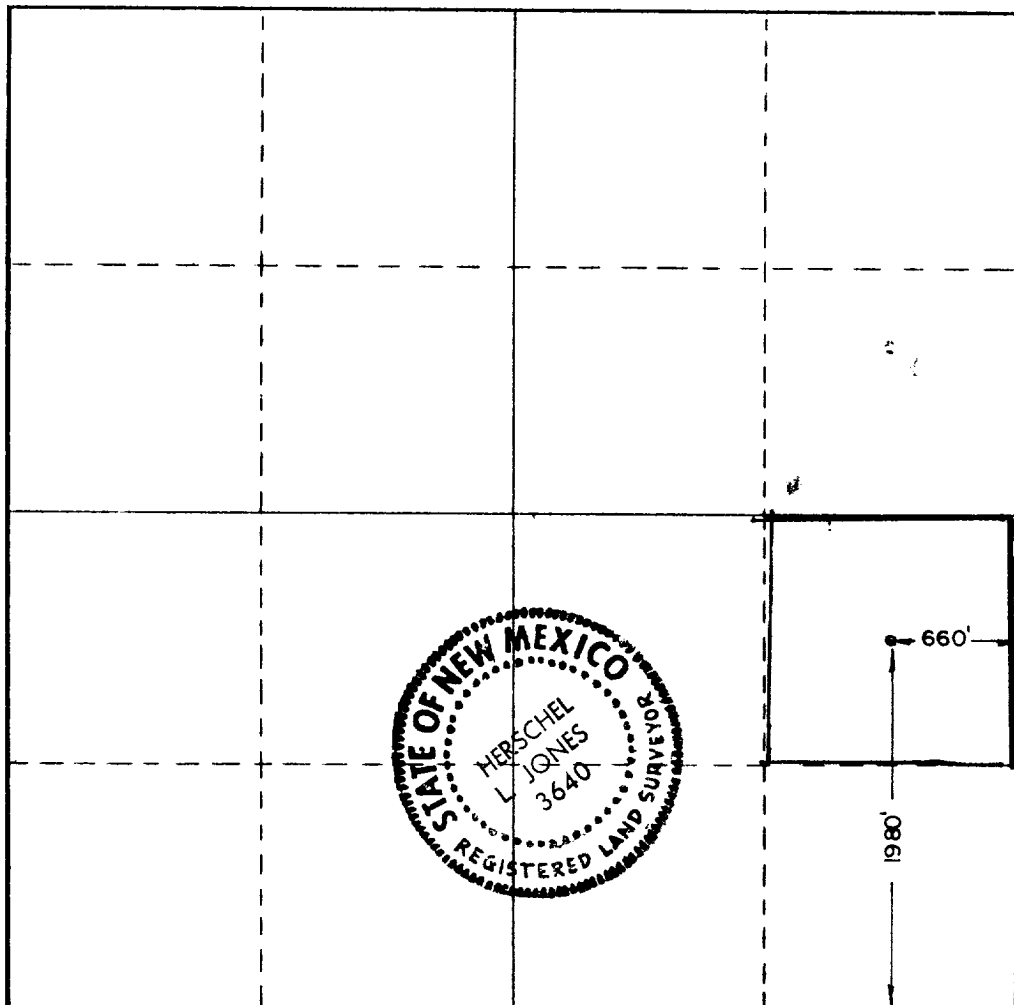
| | | | | | |
|---|---------------------------------------|---|----------------------------|---------------------------------|----------------------|
| Operator READ & STEVENS INC. | | | Lease GETTY MESA | | Well No. 1 |
| Unit Letter I | Section 14 | Township 16 South | Range 31 East | County Eddy | |
| Actual Footage Location of Well: | | | | | |
| 1980 feet from the South line and | | 660 feet from the East line | | | |
| Ground Level Elev. 4396.6 | Producing Formation Penrose | Pool Under Bunker Hill Penrose | | Dedicated Acreage: 40 | |

1. Outline the acreage dedicated to the subject well by colored pencil or hachure marks on the plat below.
2. If more than one lease is dedicated to the well, outline each and identify the ownership thereof (both as to working interest and royalty).
3. If more than one lease of different ownership is dedicated to the well, have the interests of all owners been consolidated by communitization, unitization, force-pooling, etc?

☐ Yes ☐ No If answer is "yes," type of consolidation _____

If answer is "no," list the owners and tract descriptions which have actually been consolidated. (Use reverse side of this form if necessary.) _____

No allowable will be assigned to the well until all interests have been consolidated (by communitization, unitization, forced-pooling, or otherwise) or until a non-standard unit, eliminating such interests, has been approved by the Commission.



CERTIFICATION

I hereby certify that the information contained herein is true and complete to the best of my knowledge and belief.

Karla LeJeune

Name
Karla LeJeune

Position
Authorized Agent

Company
Read & Stevens, Inc.

Date
August 4, 1983

I hereby certify that the well location shown on this plat was plotted from field notes of actual surveys made by me or under my supervision, and that the same is true and correct to the best of my knowledge and belief.

Date Surveyed
6/22/83

Registered Professional Engineer and/or Land Surveyor

Herschel L. Jones
Certificate No. **3640**

0 330 660 990 1320 1650 1980 2310 2640 2000 1500 1000 500 0