

STATE OF NEW MEXICO  
ENERGY AND MINERALS DEPARTMENT

OIL CONSERVATION DIVISION  
P.O. BOX 2088  
SANTA FE, NEW MEXICO 87501

30-015-24560

Form C-101  
Revised 1-1-65

NO. OF COPIES RECEIVED	
DISTRIBUTION	
SANTA FE	<input checked="" type="checkbox"/>
FILE	<input checked="" type="checkbox"/>
U.S.G.S.	<input checked="" type="checkbox"/>
AND OFFICE	<input checked="" type="checkbox"/>
OPERATOR	<input checked="" type="checkbox"/>

AUG 09 1983

O. C. D.  
ARTESIA, OFFICE

5A. Indicate Type of Lease  
STATE ☒ FEE ☐

5. State Oil & Gas Lease No.  
E-5668

XXXXXXXXXXXXXXXXXXXXXXXXXXXX  
XXXXXXXXXXXXXXXXXXXXXXXXXXXX

7. Unit Agreement Name

8. Farm or Lease Name  
Getty Mesa

9. Well No.  
2

10. Field and Pool, or Wildcat  
Und. Bunker Hill Penrose

XXXXXXXXXXXXXXXXXXXXXXXXXXXX  
XXXXXXXXXXXXXXXXXXXXXXXXXXXX  
XXXXXXXXXXXXXXXXXXXXXXXXXXXX

12. County  
Eddy

XXXXXXXXXXXXXXXXXXXX  
XXXXXXXXXXXXXXXXXXXX

APPLICATION FOR PERMIT TO DRILL, DEEPEN, OR PLUG BACK

1. TYPE OF WORK  
DRILL ☒ DEEPEN ☐ PLUG BACK ☐

2. TYPE OF WELL  
OIL WELL ☒ GAS WELL ☐ OTHER ☐  
SINGLE ZONE ☐ MULTIPLE ZONE ☐

Name of Operator  
Read & Stevens, Inc. ☒

Address of Operator  
P.O. Box 1518, Roswell, NM 88201

Location of Well

UNIT LETTER J LOCATED 1980 FEET FROM THE South LINE  
1980 FEET FROM THE East LINE OF SEC. 14 TWP. 16S RGE. 31E NMPM

XXXXXXXXXXXXXXXXXXXXXXXXXXXX  
XXXXXXXXXXXXXXXXXXXXXXXXXXXX  
XXXXXXXXXXXXXXXXXXXXXXXXXXXX  
XXXXXXXXXXXXXXXXXXXXXXXXXXXX

XXXXXXXXXXXXXXXXXXXXXXXXXXXX  
XXXXXXXXXXXXXXXXXXXXXXXXXXXX

Elevations (Show whether DF, RT, etc.)  
4392.1' GR

21A. Kind & Status Plug, Bond  
Statewide

19. Proposed Depth  
4250'

19A. Formation  
Penrose

20. Rotary or C.T.  
Rotary

22. Approx. Date Work will start  
September 15, 1983

21B. Drilling Contractor  
Sierra Drilg. Co. Rig #5

PROPOSED CASING AND CEMENT PROGRAM

SIZE OF HOLE	SIZE OF CASING	WEIGHT PER FOOT	SETTING DEPTH	SACKS OF CEMENT	EST. TOP
11"	8 5/8"	24#	1300'	500sx	Circ.
7 7/8"	4 1/2"	10.5#	4250'	600sx	3000'

We propose to drill and test the Penrose Sand formation. Approximately 1300' of 8 5/8" surface casing will be set to protect fresh water sands. Cement will be circulated. If the well is commercial, 4 1/2" production casing will be run and cemented to cover the pay zone with at least 600' of cement.

Mud Program: Native mud to 1300', brine 1300' to 3500', brine and starch 3500' to TD.

BOP Program: One 11" 5000psi WP Shaffer Type "LWS" Hydraulic operated, double BOP w/NL-Shaffer D05040-3S BOP control unit with 40 gal capacity.

APPROVAL VALID FOR 180 DAYS  
RECEIVED 2/16/84  
UNLESS DRILLING UNDERWAY

ABOVE SPACE DESCRIBE PROPOSED PROGRAM: IF PROPOSAL IS TO DEEPEN OR PLUG BACK, GIVE DATA ON PRESENT PRODUCTIVE ZONE AND USED NEW PRODUCTIVE ZONE. GIVE BLOWOUT PREVENTER PROGRAM, IF ANY.

Operator hereby certify that the information above is true and complete to the best of my knowledge and belief.

By Bruce Stobbs TITLE Drilling & Production Manager DATE August 4, 1983

(This space for State Use)

Original Signed By  
Leslie A. Clements  
Supervisor District II

APPROVED BY \_\_\_\_\_ TITLE \_\_\_\_\_ DATE AUG 10 1983

CONDITIONS OF APPROVAL, IF ANY: \_\_\_\_\_

Posted at P.O. Box 12-83

**NEW MEXICO OIL CONSERVATION COMMISSION  
WELL LOCATION AND ACREAGE DEDICATION PLAT**

Form C-102  
Supersedes C-128  
Effective 1-1-65

All distances must be from the outer boundaries of the Section.

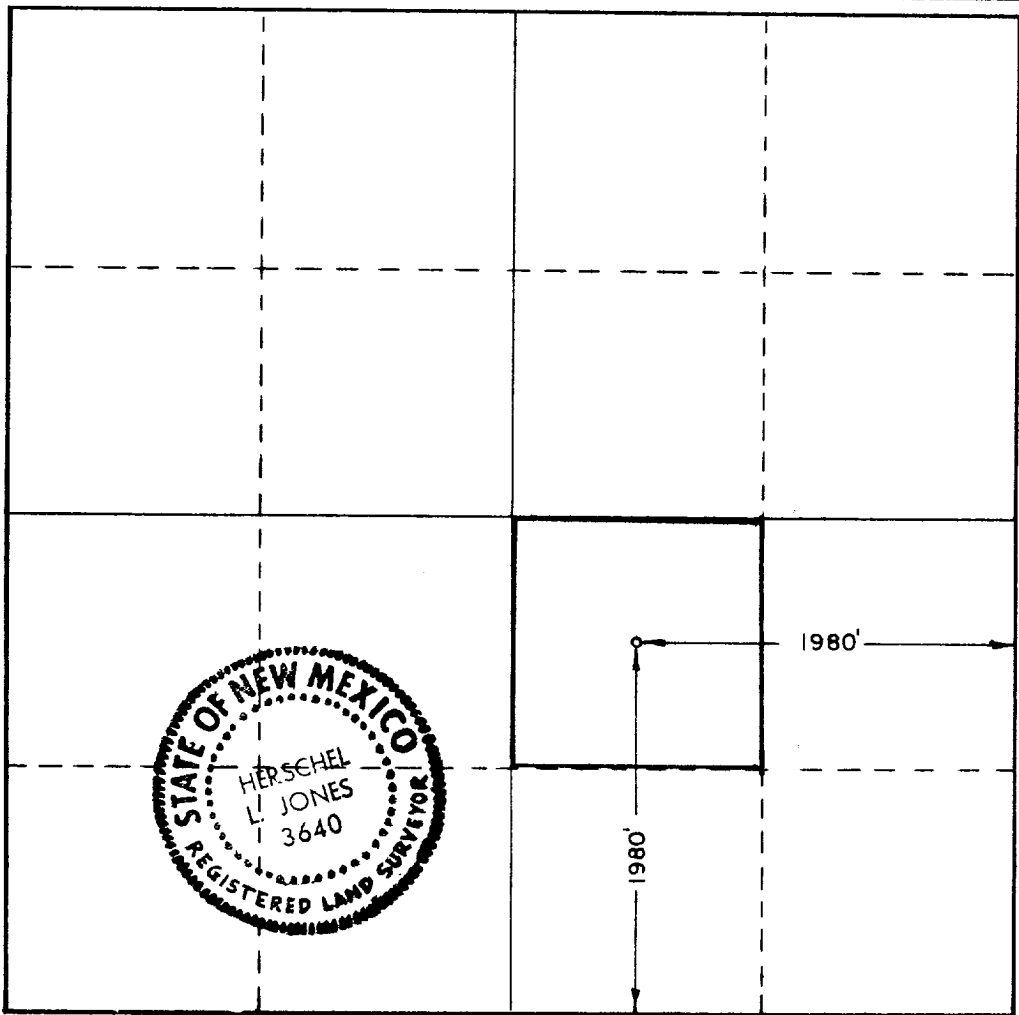
Operator <b>READ &amp; STEVENS INC.</b>			Lease <b>GETTY MESA</b>		Well No. <b>2</b>
Unit Letter <b>J</b>	Section <b>14</b>	Township <b>16 South</b>	Range <b>31 East</b>	County <b>Eddy</b>	
Actual Footage Location of Well:					
<b>1980</b> feet from the <b>South</b> line and		<b>1980</b> feet from the <b>East</b> line			
Ground Level Elev. <b>4392.1</b>	Producing Formation <b>Penrose</b>	Pool <b>Under Bunker Hill Penrose</b>	Dedicated Acreage: <b>40</b> Acres		

1. Outline the acreage dedicated to the subject well by colored pencil or hatchure marks on the plat below.
2. If more than one lease is dedicated to the well, outline each and identify the ownership thereof (both as to working interest and royalty).
3. If more than one lease of different ownership is dedicated to the well, have the interests of all owners been consolidated by communitization, unitization, force-pooling, etc?

☐ Yes    ☐ No    If answer is "yes," type of consolidation \_\_\_\_\_

If answer is "no," list the owners and tract descriptions which have actually been consolidated. (Use reverse side of this form if necessary.) \_\_\_\_\_

No allowable will be assigned to the well until all interests have been consolidated (by communitization, unitization, forced-pooling, or otherwise) or until a non-standard unit, eliminating such interests, has been approved by the Commission.



**CERTIFICATION**

I hereby certify that the information contained herein is true and complete to the best of my knowledge and belief.

*Karla LeJeune*  
Name

Karla LeJeune

Position

Authorized Agent

Company

Read & Stevens, Inc.

Date

August 4, 1983

I hereby certify that the well location shown on this plat was plotted from field notes of actual surveys made by me or under my supervision, and that the same is true and correct to the best of my knowledge and belief.

Date Surveyed

6/22/83

Registered Professional Engineer  
and/or Land Surveyor

*Herschel L. Jones*  
Certificate No.

3640