

STATE OF NEW MEXICO
ENERGY AND MINERALS DEPARTMENT

OIL CONSERVATION DIVISION
P.O. BOX 2088
SANTA FE, NEW MEXICO 87501

30-015-24562
Form C-101
Revised 1-1-65

NO. OF COPIES RECEIVED	
DISTRIBUTION	
SANTA FE	✓
FILE	✓
U.S.G.S.	✓
AND OFFICE	✓
OPERATOR	✓

AUG 09 1983

O. C. D.
ARTESIA, OFFICE

5A. Indicate Type of Lease
STATE ☒ FEE ☐

5. State Oil & Gas Lease No.

E-5668

XXXXXXXXXXXXXXXXXXXXXXXXXXXX
XXXXXXXXXXXXXXXXXXXXXXXXXXXX

7. Unit Agreement Name

8. Farm or Lease Name
Dartmouth

9. Well No.

8

10. Field and Pool, or Wildcat
Und. Bunker Hill Penrose

XXXXXXXXXXXXXXXXXXXXXXXXXXXX
XXXXXXXXXXXXXXXXXXXXXXXXXXXX
XXXXXXXXXXXXXXXXXXXXXXXXXXXX

12. County
Eddy

XXXXXXXXXXXXXXXXXXXX
XXXXXXXXXXXXXXXXXXXX

APPLICATION FOR PERMIT TO DRILL, DEEPEN, OR PLUG BACK

1. TYPE OF WORK

DRILL ☒

DEEPEN ☐

PLUG BACK ☐

2. TYPE OF WELL

OIL

GAS

SINGLE

MULTIPLE

WELL ☒

WELL ☐

OTHER ☐

ZONE ☐

ZONE ☐

Name of Operator

Read & Stevens, Inc. ✓

Address of Operator

P.O. Box 1518, Roswell, NM 88201

Location of Well

UNIT LETTER E LOCATED 1650 FEET FROM THE North LINE

D 990 FEET FROM THE West LINE OF SEC. 23 TWP. 16S RGE. 31E NMPM

XX
XX

XX
XX

XX
XX

19. Proposed Depth
4000'

19A. Formation
Penrose

20. Rotary or C.T.
Rotary

3. Elevations (Show whether DF, RT, etc.)
4180.7' GR

21A. Kind & Status Plug, Bond
Statewide

21B. Drilling Contractor
Sierra Drilg. Co. Rlg #5

22. Approx. Date Work will start
September 15, 1983

PROPOSED CASING AND CEMENT PROGRAM

SIZE OF HOLE	SIZE OF CASING	WEIGHT PER FOOT	SETTING DEPTH	SACKS OF CEMENT	EST. TOP
11"	8 5/8"	24#	1100'	500sx	Circ.
7 7/8"	4 1/2"	10.5#	4000'	600sx	3000'

We propose to drill and test the Penrose Sand formation. Approximately 1100' of 8 5/8" surface casing will be set to protect fresh water sands. Cement will be circulated. If the well is commercial, 4 1/2" production casing will be run and cemented to cover the pay zone with at least 600' of cement.

Mud Program: Native mud to 1100', brine 1100' to 3500', brine and starch 3500' to TD.

BOP Program: One 11" 5000psi WP Shaffer Type "LWS" Hydraulic operated, double BOP w/NL-Shaffer D05040-3S BOP control unit with 40 gal capacity.

APPROVED FOR 180 DAYS
FEE
2/16/84
UNIT

ABOVE SPACE DESCRIBE PROPOSED PROGRAM: IF PROPOSAL IS TO DEEPEN OR PLUG BACK, GIVE DATA ON PRESENT PRODUCTIVE ZONE AND PROPOSED NEW PRODUCTIVE ZONE. GIVE BLOWOUT PREVENTER PROGRAM, IF ANY.

hereby certify that the information above is true and complete to the best of my knowledge and belief.

IGNED Bruce Shultz TITLE Drilling & Production Manager DATE August 4, 1983

(This space for State Use)

Original Signed By
Leslie A. Clements
Supervisor District II

PROVED BY _____ TITLE _____ DATE AUG 10 1983

CONDITIONS OF APPROVAL, IF ANY:

Noting 1100' in circulation
there is 8 5/8" casing
the 8 5/8" casing

**NEW MEXICO OIL CONSERVATION COMMISSION
WELL LOCATION AND ACREAGE DEDICATION PLAT**

Form C-102
Supersedes C-128
Effective 1-4-65

All distances must be from the outer boundaries of the Section.

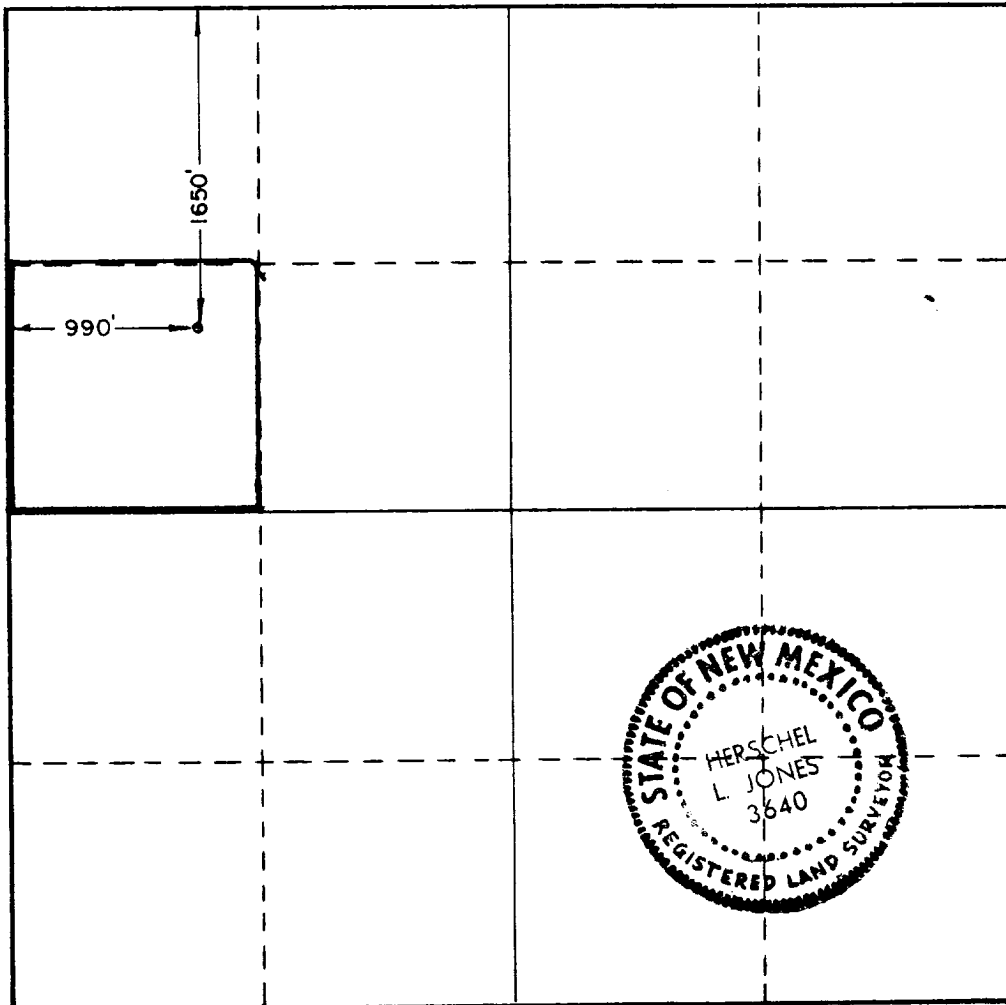
Operator READ & STEVENS INC.			Lease Dartmouth		Well No. 8
Unit Letter E	Section 23	Township 16 South	Range 31 East	County Eddy	
Actual Footage Location of Well: 990' feet from the West line and 1650 feet from the North line					
Ground Level Elev. 4180.7	Producing Formation Penrose	Pool Und. Bunker Hill Penrose		Dedicated Acreage: 40 Acres	

1. Outline the acreage dedicated to the subject well by colored pencil or hatchure marks on the plat below.
2. If more than one lease is dedicated to the well, outline each and identify the ownership thereof (both as to working interest and royalty).
3. If more than one lease of different ownership is dedicated to the well, have the interests of all owners been consolidated by communitization, unitization, force-pooling, etc?

☐ Yes ☐ No If answer is "yes," type of consolidation _____

If answer is "no," list the owners and tract descriptions which have actually been consolidated. (Use reverse side of this form if necessary.) _____

No allowable will be assigned to the well until all interests have been consolidated (by communitization, unitization, forced-pooling, or otherwise) or until a non-standard unit, eliminating such interests, has been approved by the Commission.



CERTIFICATION

I hereby certify that the information contained herein is true and complete to the best of my knowledge and belief.

Karla LeJeune
Name

Karla LeJeune

Position
Authorized Agent

Company
Read & Stevens, Inc.

Date
August 4, 1983

I hereby certify that the well location shown on this plat was plotted from field notes of actual surveys made by me or under my supervision, and that the same is true and correct to the best of my knowledge and belief.

Date Surveyed

6/22/83

Registered Professional Engineer and/or Land Surveyor

Herschel L. Jones
Certificate No. **3640**

