

STATE OF NEW MEXICO
ENERGY AND MINERALS DEPARTMENT

OIL CONSERVATION DIVISION
P.O. BOX 2088
SANTA FE, NEW MEXICO 87501

30-015-24563

Form C-101
Revised 1-1-65

NO. OF COPIES RECEIVED	
DISTRIBUTION	
SANTA FE	<input checked="" type="checkbox"/>
FILE	<input checked="" type="checkbox"/>
U.S.G.S.	<input checked="" type="checkbox"/>
LAND OFFICE	<input checked="" type="checkbox"/>
OPERATOR	<input checked="" type="checkbox"/>

AUG 09 1983

O. C. D.
ARTESIA, OFFICE

5A. Indicate Type of Lease
STATE ☒ FEE ☐

5. State Oil & Gas Lease No.

E-9049

XXXXXXXXXXXXXXXXXXXXXXXXXXXX

XXXXXXXXXXXXXXXXXXXXXXXXXXXX

7. Unit Agreement Name

-

8. Farm or Lease Name

Turner

9. Well No.

1

10. Field and Pool, or Wildcat

Und. Bunker Hill Penrose

XXXXXXXXXXXXXXXXXXXXXXXXXXXX

XXXXXXXXXXXXXXXXXXXXXXXXXXXX

XXXXXXXXXXXXXXXXXXXXXXXXXXXX

XXXXXXXXXXXXXXXXXXXXXXXXXXXX

XXXXXXXXXXXXXXXXXXXXXXXXXXXX

XXXXXXXXXXXXXXXXXXXXXXXXXXXX

XXXXXXXXXXXXXXXXXXXXXXXXXXXX

XXXXXXXXXXXXXXXXXXXXXXXXXXXX

XXXXXXXXXXXXXXXXXXXXXXXXXXXX

XXXXXXXXXXXXXXXXXXXXXXXXXXXX

XXXXXXXXXXXXXXXXXXXXXXXXXXXX

XXXXXXXXXXXXXXXXXXXXXXXXXXXX

XXXXXXXXXXXXXXXXXXXXXXXXXXXX

XXXXXXXXXXXXXXXXXXXXXXXXXXXX

XXXXXXXXXXXXXXXXXXXXXXXXXXXX

XXXXXXXXXXXXXXXXXXXXXXXXXXXX

XXXXXXXXXXXXXXXXXXXXXXXXXXXX

XXXXXXXXXXXXXXXXXXXXXXXXXXXX

XXXXXXXXXXXXXXXXXXXXXXXXXXXX

XXXXXXXXXXXXXXXXXXXXXXXXXXXX

XXXXXXXXXXXXXXXXXXXXXXXXXXXX

XXXXXXXXXXXXXXXXXXXXXXXXXXXX

XXXXXXXXXXXXXXXXXXXXXXXXXXXX

XXXXXXXXXXXXXXXXXXXXXXXXXXXX

XXXXXXXXXXXXXXXXXXXXXXXXXXXX

XXXXXXXXXXXXXXXXXXXXXXXXXXXX

XXXXXXXXXXXXXXXXXXXXXXXXXXXX

XXXXXXXXXXXXXXXXXXXXXXXXXXXX

XXXXXXXXXXXXXXXXXXXXXXXXXXXX

XXXXXXXXXXXXXXXXXXXXXXXXXXXX

XXXXXXXXXXXXXXXXXXXXXXXXXXXX

XXXXXXXXXXXXXXXXXXXXXXXXXXXX

XXXXXXXXXXXXXXXXXXXXXXXXXXXX

XXXXXXXXXXXXXXXXXXXXXXXXXXXX

XXXXXXXXXXXXXXXXXXXXXXXXXXXX

XXXXXXXXXXXXXXXXXXXXXXXXXXXX

XXXXXXXXXXXXXXXXXXXXXXXXXXXX

XXXXXXXXXXXXXXXXXXXXXXXXXXXX

XXXXXXXXXXXXXXXXXXXXXXXXXXXX

XXXXXXXXXXXXXXXXXXXXXXXXXXXX

XXXXXXXXXXXXXXXXXXXXXXXXXXXX

XXXXXXXXXXXXXXXXXXXXXXXXXXXX

XXXXXXXXXXXXXXXXXXXXXXXXXXXX

APPLICATION FOR PERMIT TO DRILL, DEEPEN, OR PLUG BACK

1. TYPE OF WORK

DRILL ☒

DEEPEN ☐

PLUG BACK ☐

2. TYPE OF WELL

OIL
WELL ☒

GAS
WELL ☐

OTHER ☐

SINGLE
ZONE ☐

MULTIPLE
ZONE ☐

Name of Operator

Read & Stevens, Inc. ✓

Address of Operator

P.O. Box 1518, Roswell, NM 88201

Location of Well

UNIT LETTER G LOCATED 1980 FEET FROM THE North LINE

1980 FEET FROM THE East LINE OF SEC. 13 TWP. 16S RGE. 31E NMPM

XX

XX

XX

XX

XX

XX

XX

XX

XX

XX

XX

XX

XX

XX

XX

XX

XX

XX

XX

XX

XX

XX

XX

XX

XX

XX

XX

XX

XX

XX

XX

XX

XX

XX

XX

XX

XX

XX

XX

XX

PROPOSED CASING AND CEMENT PROGRAM

SIZE OF HOLE	SIZE OF CASING	WEIGHT PER FOOT	SETTING DEPTH	SACKS OF CEMENT	EST. TOP
11"	8 5/8"	24#	1300'	500sx	Circ.
7 7/8"	4 1/2"	10.5#	4250'	600sx	3000'

We propose to drill and test the Penrose Sand formation. Approximately 1300' of 8 5/8" surface casing will be set to protect fresh water sands. Cement will be circulated. If the well is commercial, 4 1/2" production casing will be run and cemented to cover the pay zone with at least 600' of cement.

Mud Program: Native mud to 1300', brine 1300' to 3500', brine and starch 3500' to TD.

BOP Program: One 11" 5000psi WP Shaffer Type "LWS" Hydraulic operated, double BOP w/NL-Shaffer D05040-3S BOP control unit with 40 gal capacity.

APPROVAL VALID FOR 180 DAYS
PERMIT EXPIRES 2/16/84
UNLESS DRILLING UNDERWAY

ABOVE SPACE DESCRIBE PROPOSED PROGRAM: IF PROPOSAL IS TO DEEPEN OR PLUG BACK, GIVE DATA ON PRESENT PRODUCTIVE ZONE AND PROPOSED NEW PRODUCTIVE ZONE. GIVE BLOWOUT PREVENTER PROGRAM, IF ANY.

I hereby certify that the information above is true and complete to the best of my knowledge and belief.

SIGNED Barbara Shultz TITLE Drilling & Production Manager

DATE August 4, 1983

(This space for State Use)

Original Signed By
Leslie A. Clements
Supervisor District II

APPROVED BY _____ TITLE _____

DATE AUG 10 1983

CONDITIONS OF APPROVAL, IF ANY:

Notify N.M.O.C.G. in sufficient
time to allow commencing
887c"

**NEW MEXICO OIL CONSERVATION COMMISSION
WELL LOCATION AND ACREAGE DEDICATION PLAT**

Form C-102
Supersedes C-128
Effective 1-1-65

All distances must be from the outer boundaries of the Section.

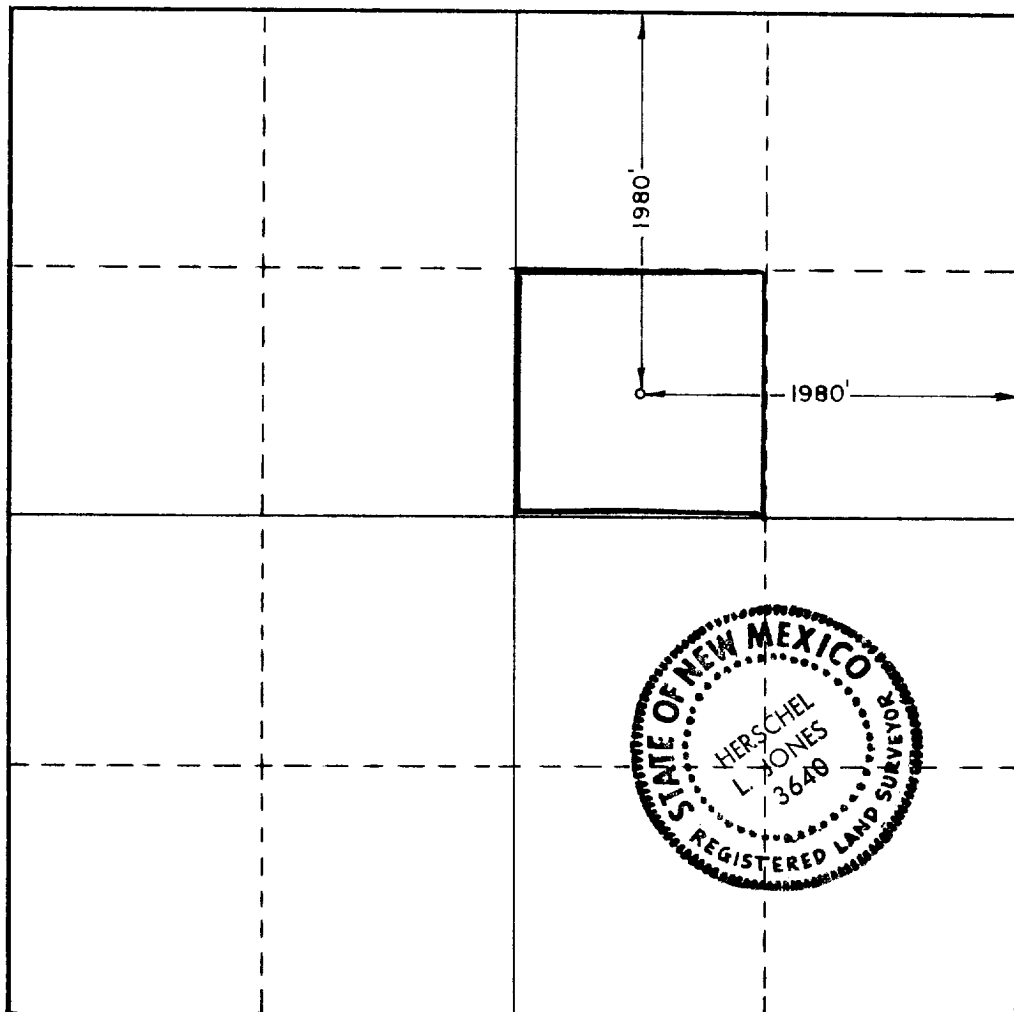
Operator READ & STEVENS INC.			Lease TURNER		Well No. 1
Unit Letter G	Section 13	Township 16 South	Range 31 East	County Eddy	
Actual Footage Location of Well: <div style="display: flex; justify-content: space-between;"> 1980 feet from the North line and 1980 feet from the East line </div>					
Ground Level Elev. 4386.1	Producing Formation Penrose	Pool Und. Bunker Hill Penrose Assoc.		Dedicated Acreage: 40 Acres	

1. Outline the acreage dedicated to the subject well by colored pencil or hachure marks on the plat below.
2. If more than one lease is dedicated to the well, outline each and identify the ownership thereof (both as to working interest and royalty).
3. If more than one lease of different ownership is dedicated to the well, have the interests of all owners been consolidated by communitization, unitization, force-pooling, etc?

☐ Yes ☐ No If answer is "yes," type of consolidation _____

If answer is "no," list the owners and tract descriptions which have actually been consolidated. (Use reverse side of this form if necessary.) _____

No allowable will be assigned to the well until all interests have been consolidated (by communitization, unitization, forced-pooling, or otherwise) or until a non-standard unit, eliminating such interests, has been approved by the Commission.



CERTIFICATION

I hereby certify that the information contained herein is true and complete to the best of my knowledge and belief.

Karla LeJeune

Name
Karla LeJeune

Position
Authorized Agent

Company
Read & Stevens, Inc.

Date
August 4, 1983

I hereby certify that the well location shown on this plat was plotted from field notes of actual surveys made by me or under my supervision, and that the same is true and correct to the best of my knowledge and belief.

Date Surveyed
6/22/83

Registered Professional Engineer and/or Land Surveyor

Herschel L. Jones

Certificate No.
3640

