

STATE OF NEW MEXICO  
ENERGY AND MINERALS DEPARTMENT

## OIL CONSERVATION DIVISION

P. O. BOX 2088  
SANTA FE, NEW MEXICO 87501Form C-101  
Revised 10-1-78

NO. OF COPIES RECEIVED	
DISTRIBUTION	
SANTA FE	<input checked="" type="checkbox"/>
FILE	<input checked="" type="checkbox"/>
U.S.G.S.	<input checked="" type="checkbox"/>
LAND OFFICE	<input checked="" type="checkbox"/>
OPERATOR	<input checked="" type="checkbox"/>

AUG 10 1983

APPLICATION FOR PERMIT TO DRILL, DEEPEN, OR PLUG BACK **O. C. D.**

Type of Work

ARTESIA, OFFICE

Type of Well

DRILL ☒DEEPEN ☐PLUG BACK ☐OIL WELL ☒GAS WELL ☐

OTHER

SINGLE ZONE ☒MULTIPLE ZONE ☐

Name of Operator

Marbob Energy Corporation ✓

Address of Operator

P.O. Drawer 217, Artesia, N.M. 88210

Location of Well

UNIT LETTER HLOCATED 1725

FEET FROM THE

North

LINE

330

FEET FROM THE

East

LINE OF SEC. 27TWP. 17SRGE. 28E

NADP

12. County

Eddy

Elevations (Show whether DE, RL, etc.)

3595' GR

21A. Kind &amp; Status Plug. Bond

Statewide active

19. Proposed Depth

3000'

20A. Formation

San Andres

20. Rotary or C.T.

Rotary

21B. Drilling Contractor

Artesia Fishing Tool

22. Approx. Date Work will start

8/11/83

## PROPOSED CASING AND CEMENT PROGRAM

SIZE OF HOLE	SIZE OF CASING	WEIGHT PER FOOT	SETTING DEPTH	SACKS OF CEMENT	EST. TOP
12 1/4"	8 5/8"	24#	500'	300	Circulate
7 7/8"	5 1/2"	15.50#	3000'	600	Attempt to circ

We propose to drill to 500', run 8 5/8" new casing and cement, drill on to 3000' to test the San Andres formation, run 5 1/2" casing and cement.

*Drilled at 12-12-83*  
*8-12-83*  
*Book*

APPROVAL VALID FOR 180 DAYS  
 PERMIT EXPIRES 2/17/84  
 UNLESS DRILLING UNDERWAY

BELOW SPACE DESCRIBE PROPOSED PROGRAM: IF PROPOSAL IS TO DEEPEN OR PLUG BACK, GIVE DATA ON PRESENT PRODUCTIVE ZONE AND PROPOSED NEW PRODUCTIVE ZONE. GIVE BLOWOUT PREVENTER PROGRAM, IF ANY.

I hereby certify that the information above is true and complete to the best of my knowledge and belief.

*Carolyn Davis*

Title Production Clerk

Date 8/9/83

(This space for State Use)

Original Signed By  
 Leslie A. Clements  
 Supervisor District II

APPROVED BY

TITLE

DATE

AUG 11 1983

CONDITIONS OF APPROVAL, IF ANY:

NEW MEXICO OIL CONSERVATION COMMISSION  
WELL LOCATION AND ACREAGE DEDICATION PLAT

Form C-102  
Supersedes C-128  
Effective 1-1-65

AUG 10 1983

All distances must be from the outer boundaries of the Section.

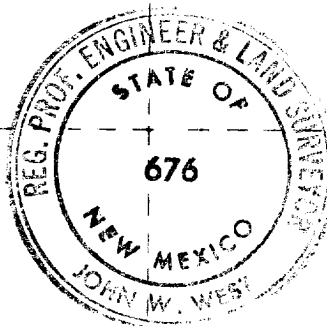
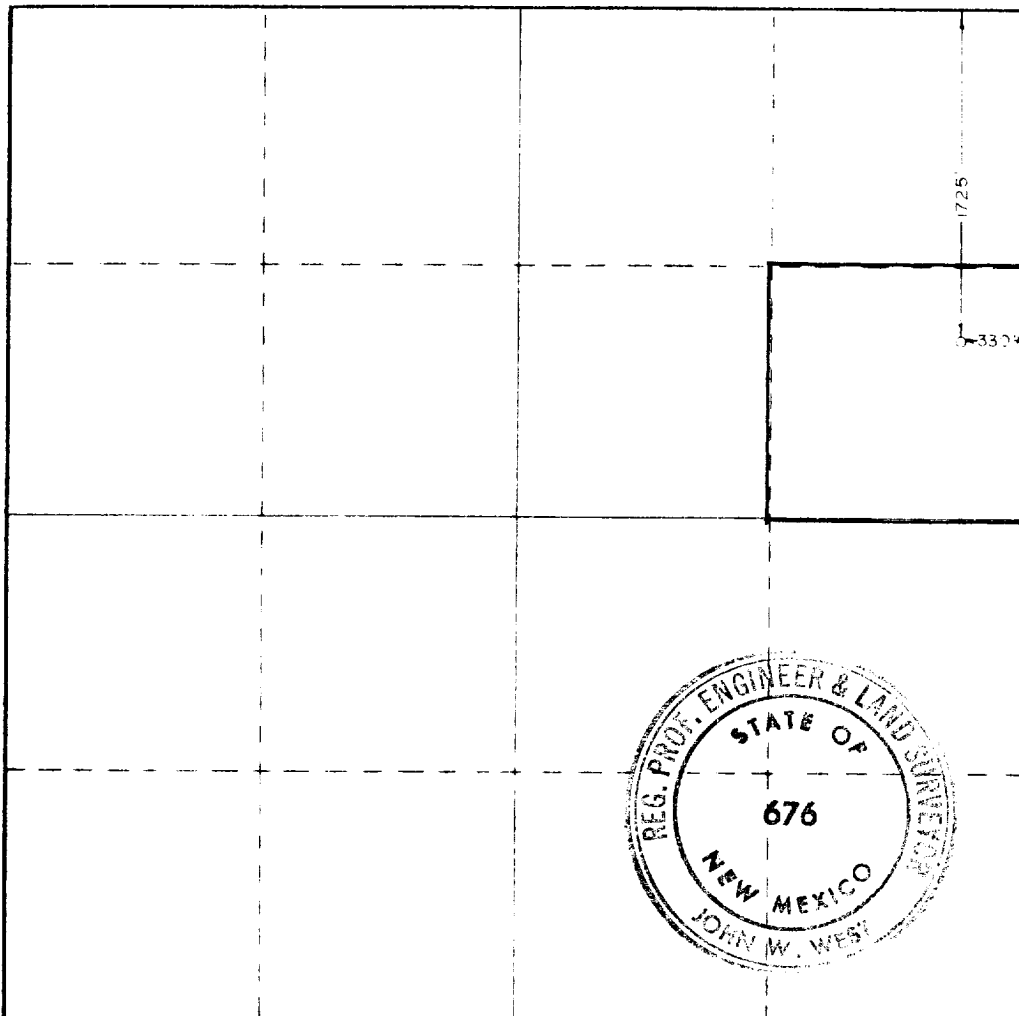
Operator <b>MARBOB ENERGY CORP.</b>			Lease <b>N.G. PHILLIPS ST.</b>		<b>O. C. D.</b>	Well No. <b>34</b>
					<b>ARTESIA, OFFICE</b>	
Tract Letter <b>H</b>	Section <b>27</b>	Township <b>17 SOUTH</b>	Range <b>28 EAST</b>	County <b>EDDY</b>		
Actual Footage Location of Well: <b>1725</b> feet from the <b>NORTH</b> line and <b>330</b> feet from the <b>EAST</b> line						
Ground Level Elev. <b>3595.0</b>	Producing Formation <b>San Andres</b>		Pool <b>Artesia Qn Grbg SA</b>		Dedicated Acreage: <b>40</b> Acres	

1. Outline the acreage dedicated to the subject well by colored pencil or hatchure marks on the plat below.
2. If more than one lease is dedicated to the well, outline each and identify the ownership thereof (both as to working interest and royalty).
3. If more than one lease of different ownership is dedicated to the well, have the interests of all owners been consolidated by communitization, unitization, force-pooling, etc?

☐ Yes ☐ No If answer is "yes," type of consolidation \_\_\_\_\_

If answer is "no," list the owners and tract descriptions which have actually been consolidated. (Use reverse side of this form if necessary.) \_\_\_\_\_

No allowable will be assigned to the well until all interests have been consolidated (by communitization, unitization, forced-pooling, or otherwise) or until a non-standard unit, eliminating such interests, has been approved by the Commission.



CERTIFICATION

I hereby certify that the information contained herein is true and complete to the best of my knowledge and belief.

*Carolyn Orris*

Name

Carolyn Orris

Position

Production Clerk

Company

Marbob Energy Corporation

Date

8/9/83

I hereby certify that the well location shown on this plat was plotted from field notes of actual surveys made by me or under my supervision, and that the same is true and correct to the best of my knowledge and belief.

Date Surveyed

4-26-83

Registered Professional Engineer and/or Land Surveyor

*John W. West*

Certificate No.

JOHN W. WEST NO. 676

0 330 660 990 1320 1650 1980 2310 2640 2970 3300 3630 3960 4290 4620 4950 5280 5610 5940 6270 6600