

UNITED STATES  
DEPARTMENT OF THE INTERIOR  
GEOLOGICAL SURVEY

SUBMIT IN 3 REPLICATE\*  
(with instructions on  
the reverse side)

Form approved.  
Budget Bureau No. 42 R1425.

APPLICATION FOR PERMIT TO DRILL, DEEPEN OR PLUG BACK

1a. TYPE OF WORK  
DRILL ☒ DEEPEN ☒ PLUG BACK ☐

b. TYPE OF WELL  
OIL WELL ☒ GAS WELL ☐ OTHER ☐

2. NAME OF OPERATOR  
Anadarko Production Company

3. ADDRESS OF OPERATOR  
P. O. Drawer 130, Artesia, New Mexico 88210

4. LOCATION OF WELL (Report location clearly and in accordance with any State requirements.)\*  
At surface 1250' FNL & 1031' FWL Sec. 31, T16S, R31E, Eddy Co., N.M.  
At proposed prod. zone Same

14. DISTANCE IN MILES AND DIRECTION FROM NEAREST TOWN OR POST OFFICE\*  
Approximately 7 miles Northeast of Loco Hills, New Mexico

15. DISTANCE FROM PROPOSED\* LOCATION TO NEAREST PROPERTY OR LEASE LINE, FT. (Also to nearest drlg. unit line, if any)  
1250'

16. NO. OF ACRES IN LEASE  
461.75

17. NO. OF ACRES ASSIGNED TO THIS WELL  
40

18. DISTANCE FROM PROPOSED LOCATION\* TO NEAREST WELL, DRILLING COMPLETED, OR APPLIED FOR, ON THIS LEASE, FT.  
850'

19. PROPOSED DEPTH  
3400'

20. ROTARY OR CABLE TOOLS  
Rotary

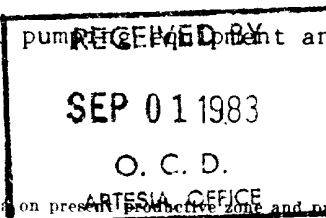
21. ELEVATIONS (Show whether DF, RT, GR, etc.)  
3814.7' GL

22. APPROX. DATE WORK WILL START\*  
August 22, 1983

PROPOSED CASING AND CEMENTING PROGRAM

| SIZE OF HOLE | SIZE OF CASING | WEIGHT PER FOOT | SETTING DEPTH | QUANTITY OF CEMENT        |
|--------------|----------------|-----------------|---------------|---------------------------|
| 12-1/4"      | 8-5/8"         | 24.0#           | 1550'         | Approx. 400 - circulated  |
| 7-7/8"       | 5-1/2"         | 15.5#           | 3400'         | Approx. 1000 - circulated |

1. Rig up Rotary Tools.
2. Drill 12-1/4" hole to approx. 1550'; set & circulate or ready-mix cement to surface on 8-5/8" casing. Install and test Series 900 Double Ram Hydraulic Blowout Preventor.
3. Drill 7-7/8" hole to T D (approx. 3400'); run Open Hole Logs.
4. Set & circulate cement on 5-1/2" casing from T D to surface. (If water flow is encountered in the Grayburg (2900'), an openhole inflatable packer will be run directly above water flow, cement will be circulated and packer set).
5. Perforate, acidize and fracture treat.
6. Run 2-3/8" tubing, rods and bottomhole pump; install pumpjack and place well on production.



IN ABOVE SPACE DESCRIBE PROPOSED PROGRAM: If proposal is to deepen or plug back, give data on present productive zone and proposed new productive zone. If proposal is to drill or deepen directionally, give pertinent data on subsurface locations and measured and true vertical depths. Give blowout preventer program, if any.

24. SIGNED Truman D. Jones TITLE Field Foreman DATE August 9, 1983

(This space for Federal or State office use)

PERMIT NO. \_\_\_\_\_ APPROVAL DATE \_\_\_\_\_

APPROVED BY A. A. Lopez TITLE \_\_\_\_\_ DATE 8/30/83

CONDITIONS OF APPROVAL, IF ANY:

NMOC D Approval For Unorthodox Location

\*See Instructions On Reverse Side

APPROVAL SUBJECT TO  
GENERAL REQUIREMENTS AND  
SPECIAL STIPULATIONS  
ATTACHED

**NEW MEXICO OIL CONSERVATION COMMISSION  
WELL LOCATION AND ACREAGE DEDICATION PLAT**

Form C-102  
Supersedes C-128  
Effective 1-1-65

All distances must be from the outer boundaries of the Section.

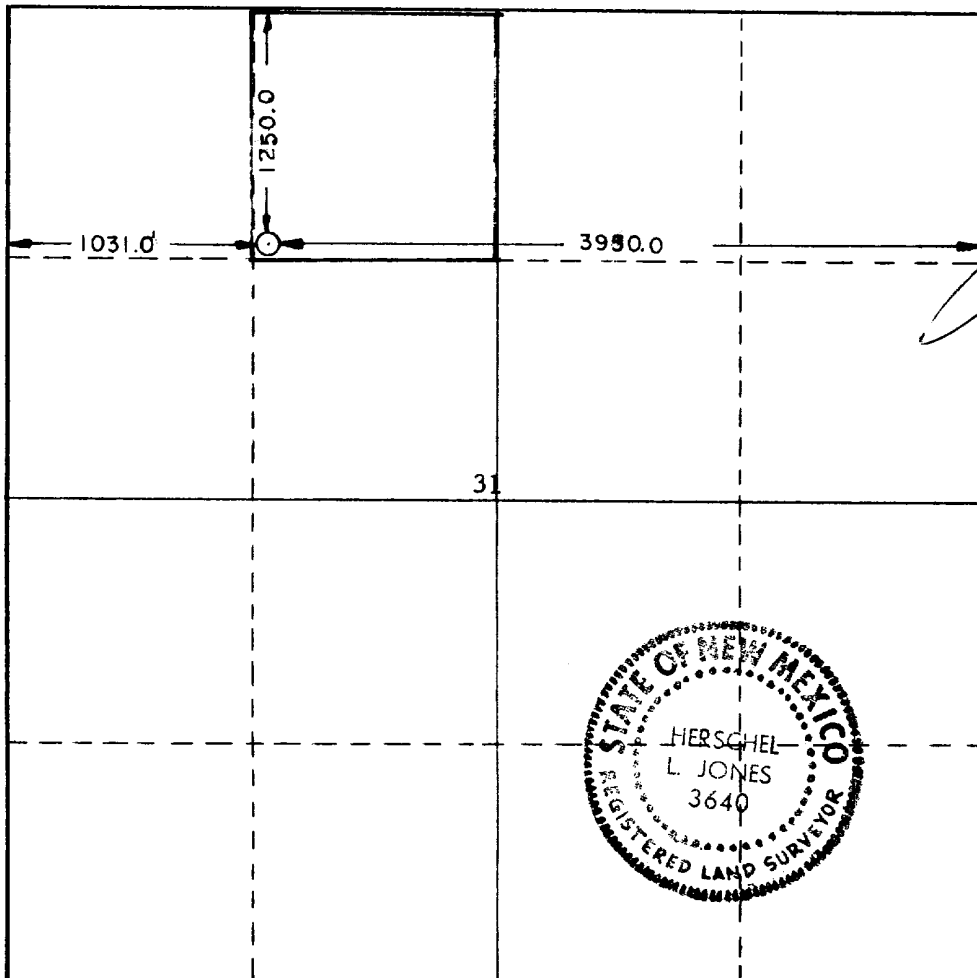
|  |   |                             |  |                       |                                       |
|--|---|-----------------------------|--|-----------------------|---------------------------------------|
| Operator<br><b>ANADARKO PRODUCTION COMPANY</b>   |   |                             | Lease<br><b>GRIER FEDERAL</b>                            |                       | Well No.<br><b>20</b>                 |
| Unit Letter<br><b>"C"</b>  | Section<br><b>31</b>                              | Township<br><b>16 South</b> | Range<br><b>31 East</b>                                  | County<br><b>Eddy</b> |                                       |
| Actual Footage Location of Well:<br><div style="display: flex; justify-content: space-between;"> <span><b>1250'</b> feet from the <b>North</b> line and <b>1031</b> feet from the <b>West</b> line</span> <span><b>3950</b> feet from the <b>East</b> line</span> </div> |   |                             |  |                       |                                       |
| Ground Level Elev.<br><b>3814.7</b>  | Producing Formation<br><b>Grayburg-San Andres</b> |                             | Pool<br><b>Square Lake</b><br><b>Grayburg-San Andres</b> |                       | Dedicated Acreage:<br><b>40</b> Acres |

1. Outline the acreage dedicated to the subject well by colored pencil or hachure marks on the plat below.
2. If more than one lease is dedicated to the well, outline each and identify the ownership thereof (both as to working interest and royalty).
3. If more than one lease of different ownership is dedicated to the well, have the interests of all owners been consolidated by communitization, unitization, force-pooling, etc?

☐ Yes    ☐ No    If answer is "yes," type of consolidation \_\_\_\_\_

If answer is "no," list the owners and tract descriptions which have actually been consolidated. (Use reverse side of this form if necessary.) \_\_\_\_\_

No allowable will be assigned to the well until all interests have been consolidated (by communitization, unitization, forced-pooling, or otherwise) or until a non-standard unit, eliminating such interests, has been approved by the Commission.



**CERTIFICATION**

I hereby certify that the information contained herein is true and complete to the best of my knowledge and belief.

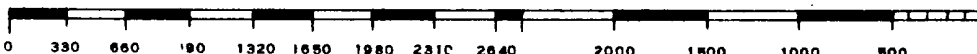
Name *Jerry E. Buckles*  
**Jerry E. Buckles**  
Position  
**Area Supervisor**  
Company  
**Anadarko Production Company**  
Date  
**August 30, 1983**

I hereby certify that the well location shown on this plat was plotted from field notes of actual surveys made by me or under my supervision, and that the same is true and correct to the best of my knowledge and belief.

Date Surveyed  
**July 21, 1983**

Registered Professional Engineer and/or Land Surveyor

Certificate No. *Herschel L. Jones*  
**3640**



This data sheet is provided in reference to the attached "Application for Permit to Drill: Anadarko's Grier Federal #20.

1. Location: 1250' FNL & 1078' FWL Sec. 31, T16S, R31E, Eddy County, New Mexico
2. Elevation: 3814.7' GL
3. Geological Name of Surface Formation: Triassic Rock
4. Type of Drilling Tools to be utilized: Rotary Tools
5. Proposed Drilling Depth: Approx. 3400'
6. Tops of Important Geological Markers:

|             |       |              |       |
|-------------|-------|--------------|-------|
| T. Salt - - | 500'  | 7-Rivers - - | 1640' |
| B. Salt - - | 1400' | Queen - - -  | 2200' |
| Tansill - - | 1400' | Grayburg - - | 2870' |
| Yates - - - | 1520' | San Andres - | 3170' |
7. Estimated Depth of Anticipated Water, Oil or Gas:

|                 |               |
|-----------------|---------------|
| <u>Oil:</u> - - | 2870' - 3300' |
|-----------------|---------------|
8. Casing Program:

|                                   |
|-----------------------------------|
| 8-5/8" - 24.0# K-55 or J-55 - New |
| 5-1/2" - 15.5# K-55 or J-55 - New |
9. Setting Depth of Casing:

|   |
|---|
| 8-5/8" - 1550' - approx. 400 sx cement  |
| 5-1/2" - 3400' - approx. 1000 sx cement |
10. Specifications for Pressure Control Equipment: (See attached Schematic)

This rig will have a Series 900 BOP with 4" Blind Rams, kill line and choke manifold; Koomey Hydraulic controls & accumulator with remote controls. When nipping up, test BOP and Choke to 1000 psi. Operate BOP equipment once a day, or as directed by Company Representative.
11. Mud Program:

Spud and drill with 10# Brine water to a depth of approx. 1550'. Drill out from under surface casing with fresh water native mud to within 50' of TD. While maintaining a Ph of 10. At this point paper & gel will be used to clean hole prior to running O. H. Logs.
12. Testing, Logging & Coring Program:
  - a. Testing: No drill stem tests will be conducted.
  - b. Coring: No coring is planned but there is a possibility the well will be cored.
  - c. Logging: Open Hole Logs will be run prior to running 5½" casing.
13. Potential Hazards:

None are expected. Above described BOP should take care of any blowout. Numerous wells have been drilled in this area without problems.
14. Anticipated Starting Date & Duration:

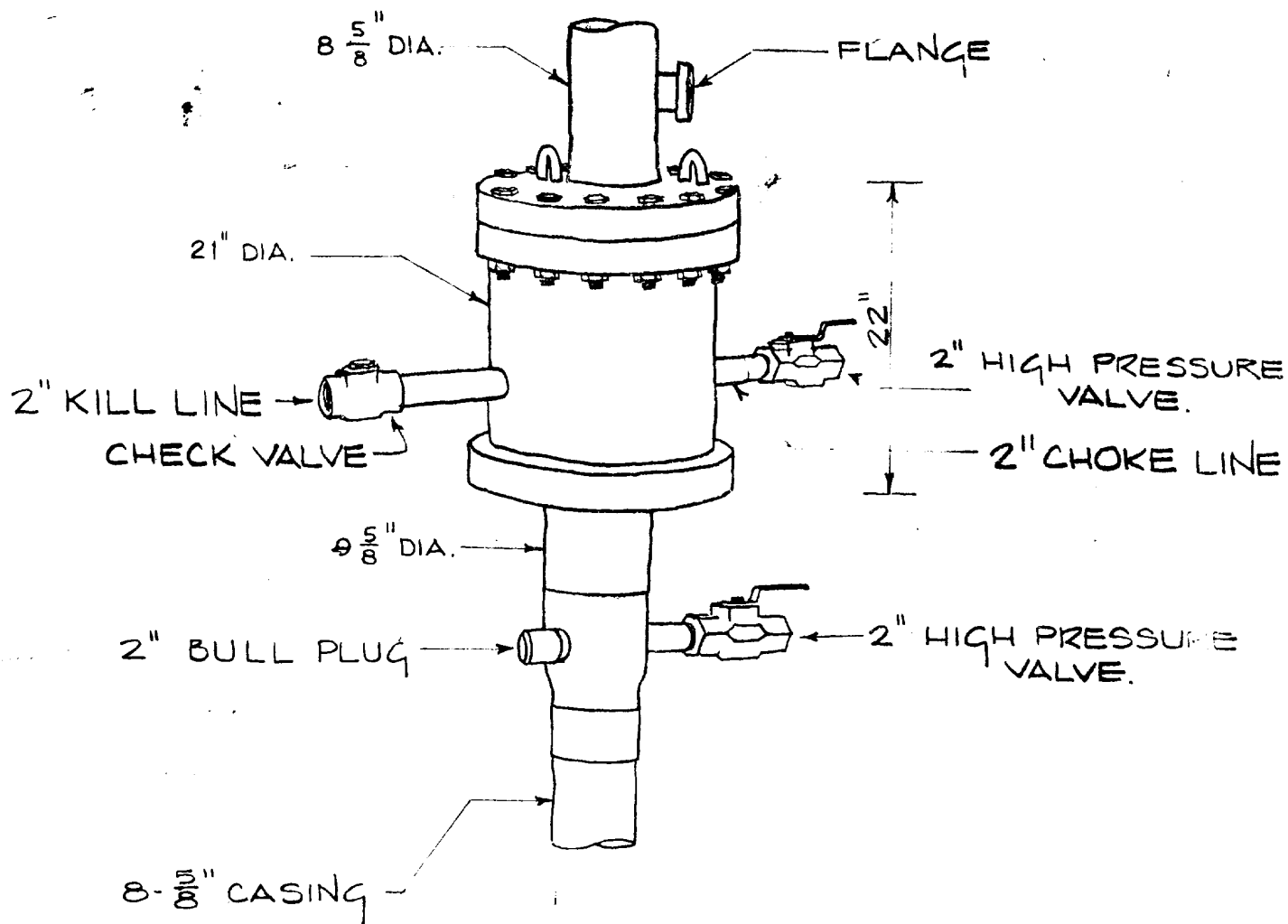
Plans are to begin drilling operations about August 22, 1983; approx. 6 days will be required to drill the well and 2 weeks for completion.
15. Other Facets:

None.

Inter-Department Correspondence

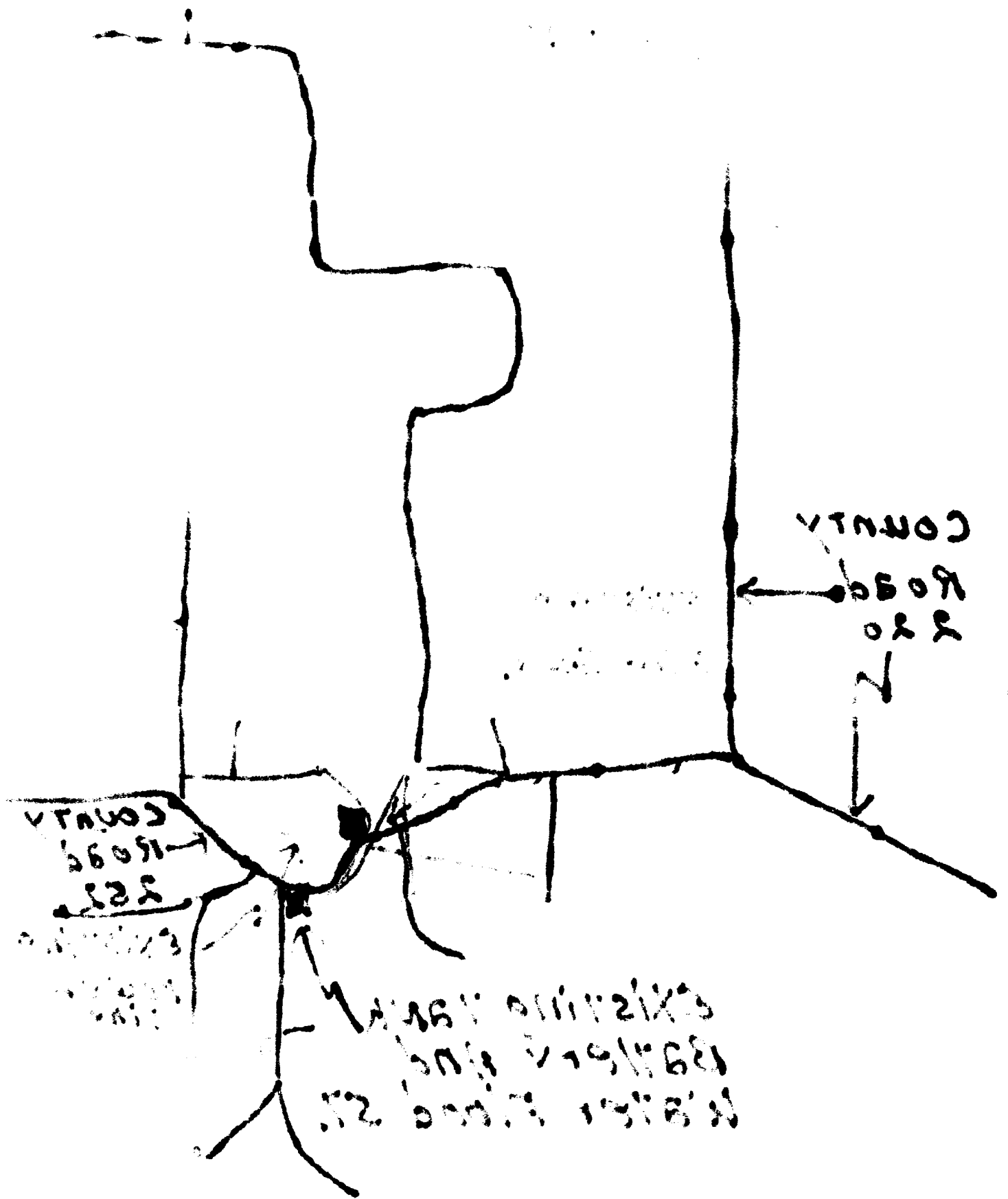
TO  
 FROM  
 SUBJECT

DATE JUNE 4, 1982



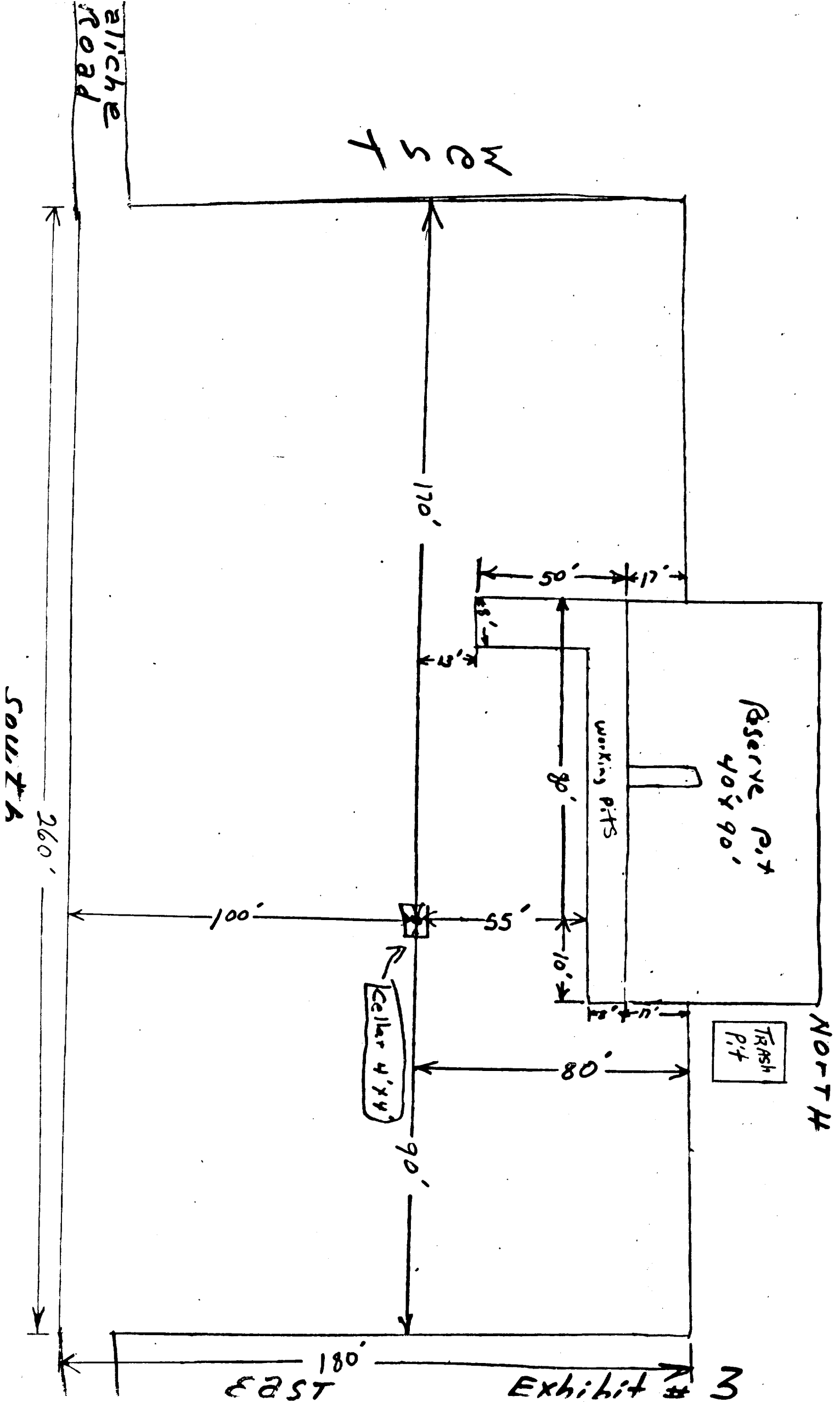
SHAFFER SERIES 900  
 BLOW OUT PREVENTER  
 FOR SALAZAR-13 RIG. PREVENTER  
 IS BLADDER-TYPE WITH HYDRAULIC  
 RAMS.





21/12/1961

21/12/1961



West

NORTH

Reserve Pit  
40' x 90'

Trash Pit

working pits

Cellar 4' x 4'

Exhibit # 3

East

aliche road

260'  
South

170'

90'

180'

100'

50'

17'

8'

55'

55'

10'

80'