

UNITED STATES  
DEPARTMENT OF THE INTERIOR  
GEOLOGICAL SURVEY

5. LEASE DESIGNATION AND SERIAL NO.

NM-18973

6. IF INDIAN, ALLOTTEE OR TRIBE NAME

7. UNIT AGREEMENT NAME

8. FARM OR LEASE NAME

Five Forks Federal

9. WELL NO.

1

10. FIELD AND POOL, OR WILDCAT

Wildcat

11. SEC., T., R., M., OR BLK.  
AND SURVEY OR AREA

Section 15-T17S-R27E

12. COUNTY OR PARISH

13. STATE

Eddy

New Mexico

## APPLICATION FOR PERMIT TO DRILL, DEEPEN, OR PLUG BACK

1a. TYPE OF WORK

DRILL ☒

RECEIVED BY

PLUG BACK ☐

b. TYPE OF WELL

OIL  
WELL ☒GAS  
WELL ☐OTHER ☐SINGLE  
ZONE ☐MULTIPLE  
ZONE ☐

2. NAME OF OPERATOR

Eagle Oil &amp; Gas Co.

3. ADDRESS OF OPERATOR

510 Hamilton Building, Wichita Falls, Texas 76301

4. LOCATION OF WELL (Report location clearly and in accordance with any State requirements.)\*

At surface

1980' BSL and 1980' FEL

At proposed prod. zone

Same

14. DISTANCE IN MILES AND DIRECTION FROM NEAREST TOWN OR POST OFFICE\*

Approximately 8 miles east of Artesia, NM

15. DISTANCE FROM PROPOSED\*

LOCATION TO NEAREST

PROPERTY OR LEASE LINE, FT.

(Also to nearest drig. unit line, if any)

660'

16. NO. OF ACRES IN LEASE

320

17. NO. OF ACRES ASSIGNED

TO THIS WELL

40

18. DISTANCE FROM PROPOSED LOCATION\*

TO NEAREST WELL, DRILLING, COMPLETED,  
OR APPLIED FOR, ON THIS LEASE, FT.2000' to  
dry holes

19. PROPOSED DEPTH

750'

20. ROTARY OR CABLE TOOLS

Rotary Air Rig

21. ELEVATIONS (Show whether DF, RT, GR, etc.)

3490' GR

22. APPROX. DATE WORK WILL START\*

August 30, 1983

23.

## PROPOSED CASING AND CEMENTING PROGRAM

SIZE OF HOLE	SIZE OF CASING	WEIGHT PER FOOT	SETTING DEPTH	QUANTITY OF CEMENT
8 3/4"	7" conductor	20#	30'	Cmt to surface with ready mix
6 1/4"	4 1/2"	10.5#	750'	300 Sx "C" circulated to surface

Proposed to rotary air drill to a depth of 750' to test the Seven Rivers and the Queen formations. If production is indicated, will set casing and attempt completion.

Mud program: None, since this is air drilled.

BOP: A rotating head will be used since no pressures are anticipated at this depth. The rotating head will stand back pressures of 500-600# before leaking back around the rubber and will stand around 2000# surges.

IN ABOVE SPACE DESCRIBE PROPOSED PROGRAM: If proposal is to deepen or plug back, give data on present productive zone and proposed new productive zone. If proposal is to drill or deepen directionally, give pertinent data on subsurface locations and measured and true vertical depths. Give blowout preventer program, if any.

24.

SIGNED

*Georges Smith*

TITLE

Agent for:

Eagle Oil &amp; Gas Co.

ROSWEEL, NEW MEXICO

DATE August 17, 1983

(This space for Federal or State office use)

PERMIT NO.

APPROVAL DATE

APPROVED BY

*A. H. L...*

TITLE

DATE

8/24/83

CONDITIONS OF APPROVAL, IF ANY:

APPROVAL SUBJECT TO  
GENERAL REQUIREMENTS AND  
SPECIAL STIPULATIONS  
ATTACHED

All distances must be from the outer boundaries of the Section.

Operator <b>Eagle Oil &amp; Gas</b>		Lease <b>Five Forks Federal</b>		Well No. <b>1</b>
Well Letter <b>J</b>	Section <b>15</b>	Township <b>17 South</b>	Range <b>27 East</b>	County <b>Eddy</b>
Actual Footage Location of Well:				
1980 feet from the <b>South</b> line and		1980 feet from the <b>East</b> line		Dedicated Acreage: <b>40</b> Acres
Ground Level Elev. <b>3490</b>	Producing Formation <b>Seven Rivers/Queen</b>	Pool <b>Undesignated</b>		

1. Outline the acreage dedicated to the subject well by colored pencil or hatchure marks on the plat below.

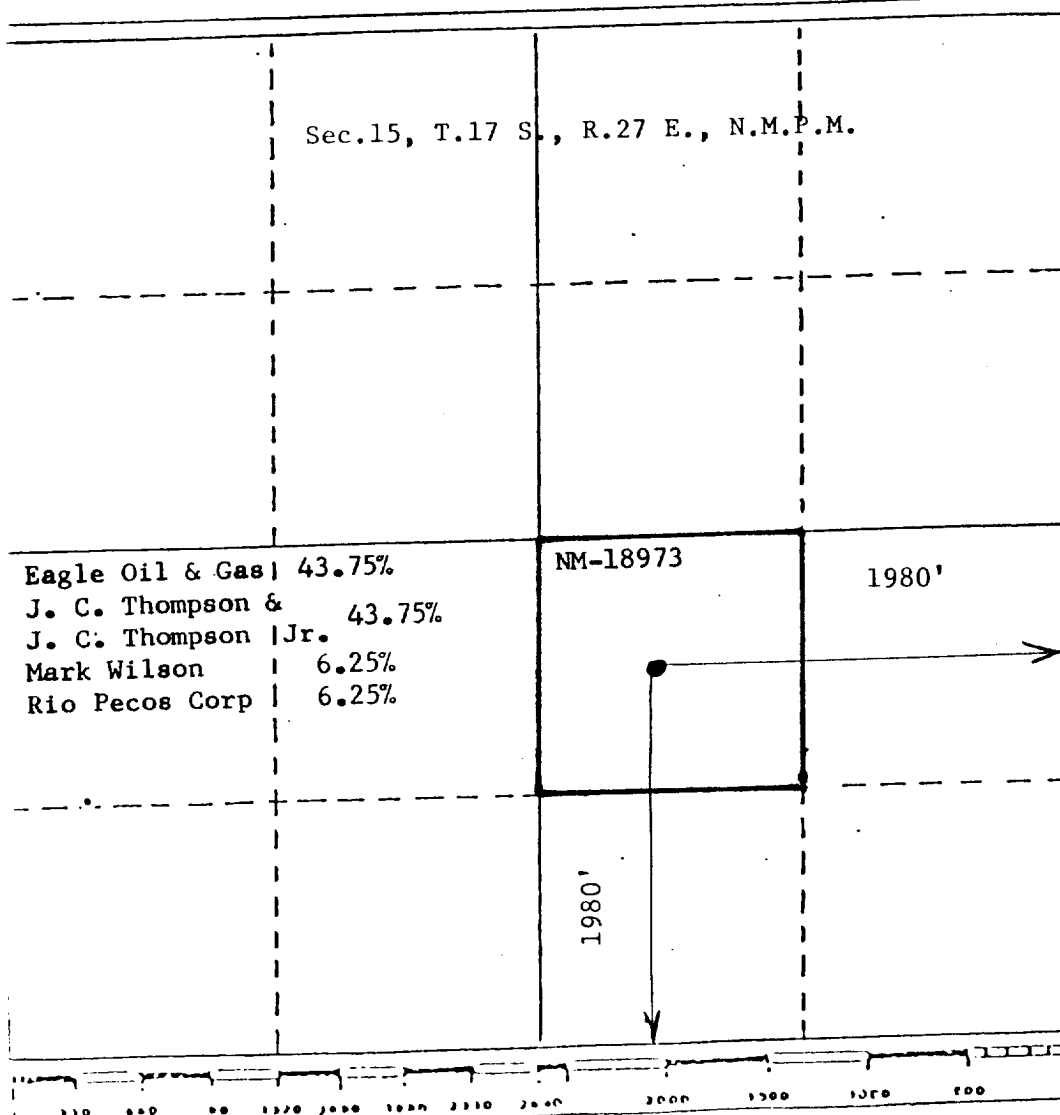
2. If more than one lease is dedicated to the well, outline each and identify the ownership thereof (both as to working interest and royalty).

3. If more than one lease of different ownership is dedicated to the well, have the interests of all owners been consolidated by communitization, unitization, force-pooling, etc?

☐ Yes ☐ No If answer is "yes," type of consolidation \_\_\_\_\_

If answer is "no," list the owners and tract descriptions which have actually been consolidated. (Use reverse side of this form if necessary.) \_\_\_\_\_

No allowable will be assigned to the well until all interests have been consolidated (by communitization, unitization, forced-pooling, or otherwise) or until a non-standard unit, eliminating such interests, has been approved by the Division.



CERTIFICATION

I hereby certify that the information contained herein is true and complete to the best of my knowledge and belief.

*George R. Smith*

Name

George R. Smith

Position

Agent for:

Company

Eagle Oil & Gas Co.

Date

August 17, 1983

I hereby certify that the well location shown on this plat was plotted from field notes of actual surveys made by me or under my supervision, and that the same is true and correct to the best of my knowledge and belief.

**JOHN D. JAQUES**  
NEW MEXICO  
Professional Engineer  
and/or Land Surveyor  
August 11, 1983  
6290  
John D. Jaques, P.E. & L.S.  
Certificate No. 6290

APPLICATION FOR DRILLING

EAGLE OIL & GAS CO.  
Five Forks Federal, Well No. 1  
1980' FSL & 1980' FEL, Sec. 15-T17S-R27E  
Eddy County, New Mexico  
Lease No.: NM-18973  
(Exploratory Well)

In conjunction with Form 9-331C, Application for Permit to Drill subject well, Eagle Oil & Gas Co. submits the following items of pertinent information in accordance with BLM requirements:

1. The geologic surface formation is recent Permian with quaternary alluvium and other surficial deposits.
2. The estimated tops of geologic markers are as follows:

Yates	200'
Seven Rivers	350'
Queen	690'
T.D.	750'
3. The estimated depths at which anticipated water, oil or gas formations are expected to be encountered:

Water:	Surface water between 100' - 250' $\pm$ .	
Oil:	Possible in the Seven Rivers between 350' - 400'.	
	Possible in the Queen at approximately 700'.	
Gas:	None expected.	
4. Proposed Casing Program: See Form 9-331C.
5. Pressure Control Equipment: A rotating head will be used on this rotary air rig since there are no known pressure problems in the offsetting wells, at this depth. The rotating head will stand back pressures of 500-600#.
6. Mud Program: Mud will not be used since this well will be drilled with a rotary air drilling rig.
7. Auxiliary equipment: Dyer Diverter.
8. Testing, Logging and Coring:

Drill Stem Tests: None.	
Logging:	Gamma Ray: Surface to T. D.
	Dual Induction Laterolog: Surface to T. D.
Coring:	None.
9. No abnormal pressures or temperatures are anticipated.
10. Anticipated starting date: August 30, 1983.  
Anticipated completion of drilling operations: Approximately 5 days.

NEW MEXICO STATE HIGHWAY DEPARTMENT  
PLANNING AND PROGRAMING DIVISION

BUREAU OF PUBLIC ROADS

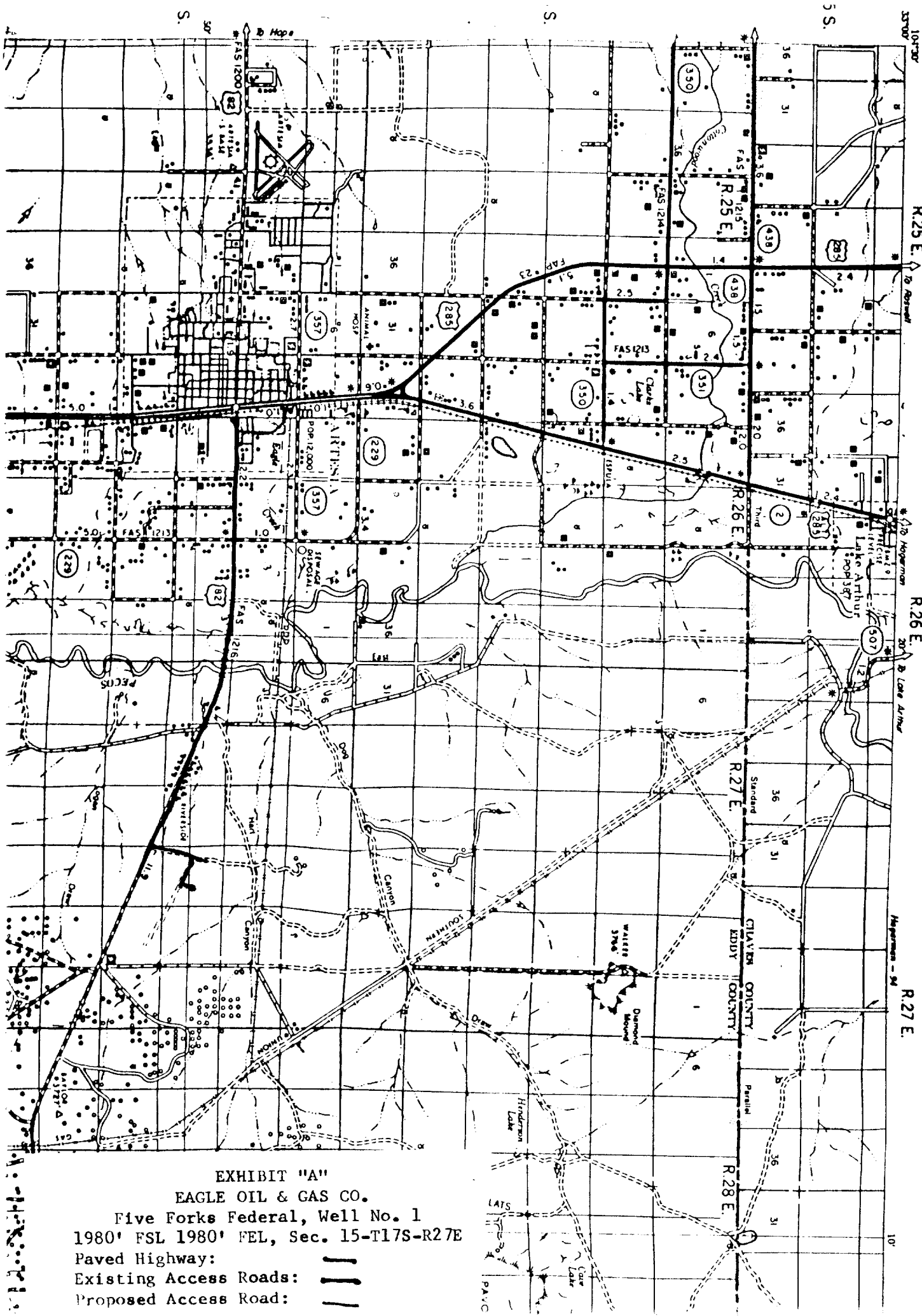


EXHIBIT "A"

EAGLE OIL & GAS CO.

Five Forks Federal, Well No. 1

1980' FSL 1980' FEL, Sec. 15-T17S-R27E

Paved Highway:

Existing Access Roads:

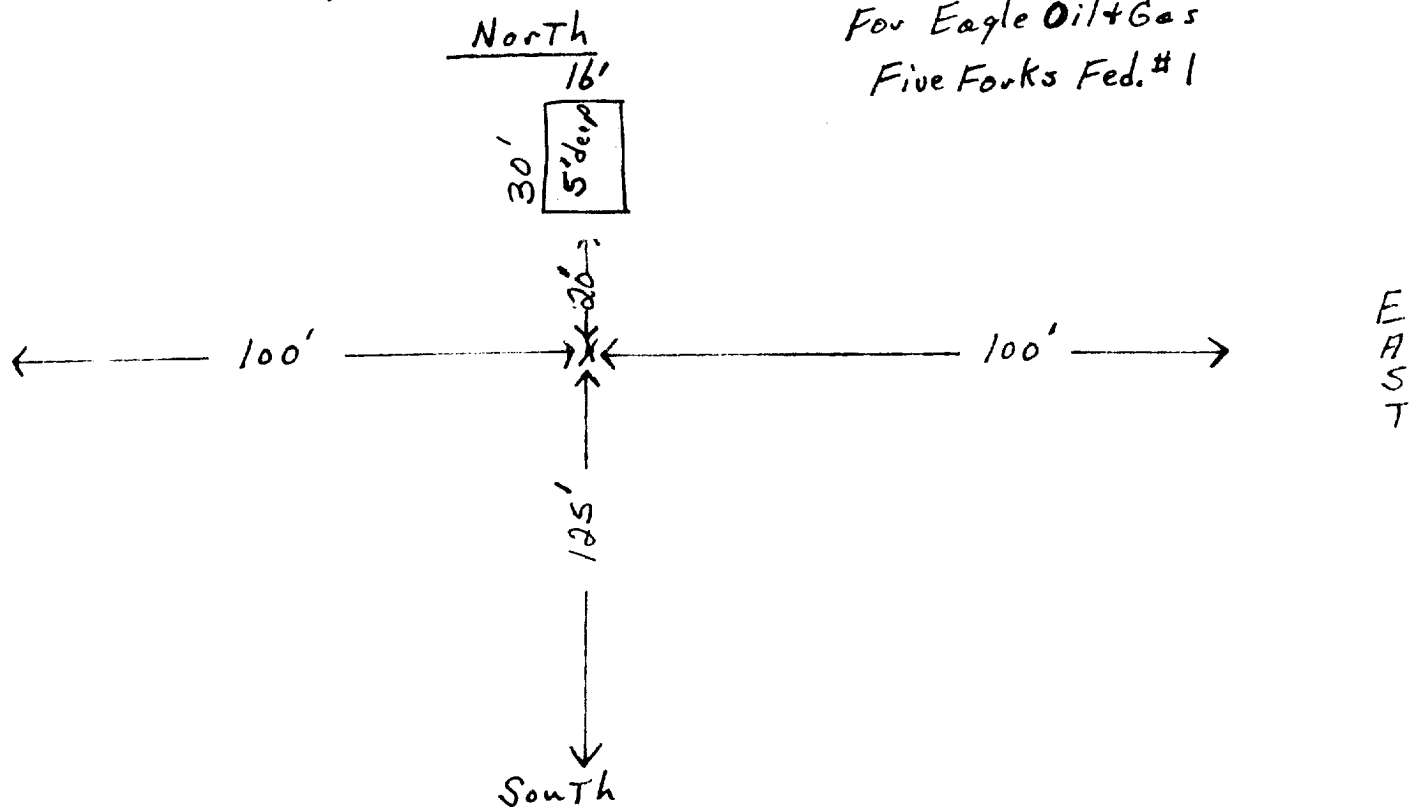
Proposed Access Road:

**Yucca Drilling Co.**

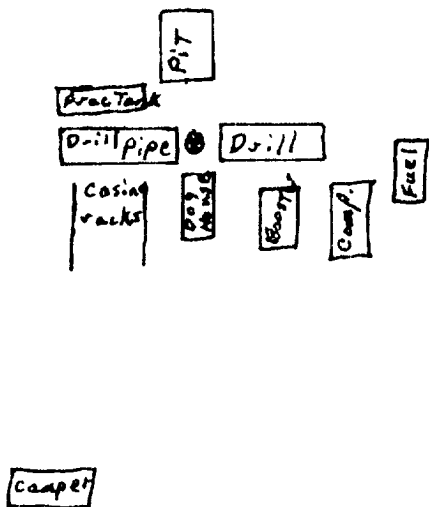
PHONES: (505) 746-4531 (505) 748-3523

412 E. MAIN / BOX 1300 — ARTESIA, NEW MEXICO 88210

For Eagle Oil & Gas  
Five Forks Fed. #1



Typical <sup>N</sup> Layout (NOT TO SCALE)



S

E

EXHIBIT "D"  
EAGLE OIL & GAS CO.  
Five Forks Federal, Well No. 1  
Rig Layout

