

c/sf

UNITED STATES
DEPARTMENT OF THE INTERIOR

GEOLOGICAL SURVEY

APPLICATION FOR PERMIT TO DRILL, DEEPEN, OR PLUG BACK

1a. TYPE OF WORK

DRILL ☒DEEPEN ☐PLUG BACK ☐

b. TYPE OF WELL

OIL
WELL ☐GAS
WELL ☒OTHER ☐

2. NAME OF OPERATOR

Mesa Petroleum Co.

3. ADDRESS OF OPERATOR

P. O. Box 2009 / Amarillo, Texas 79189

4. LOCATION OF WELL (Report location clearly and in accordance with any State requirements.)

At surface

1985' FNL & 660' FWL

At proposed prod. zone

Same

14. DISTANCE IN MILES AND DIRECTION FROM NEAREST TOWN OR POST OFFICE*

12 miles SE of Lake Arthur

15. DISTANCE FROM PROPOSED*

LOCATION TO NEAREST
PROPERTY OR LEASE LINE, FT.
(Also to nearest drlg. unit line, if any)

660'

18. DISTANCE FROM PROPOSED LOCATION*

TO NEAREST WELL, DRILLING, COMPLETED,
OR APPLIED FOR, ON THIS LEASE, FT.

1750'

16. NO. OF ACRES IN LEASE

1249.63

19. PROPOSED DEPTH

9400'

17. NO. OF ACRES ASSIGNED
TO THIS WELL

270.5

20. ROTARY OR CABLE TOOLS

Rotary

21. ELEVATIONS (Show whether DF, RT, GR, etc.)

3653' GR

22. APPROX. DATE WORK WILL START*

October 1, 1983

23.

PROPOSED CASING AND CEMENTING PROGRAM

SIZE OF HOLE	SIZE OF CASING	WEIGHT PER FOOT	SETTING DEPTH	QUANTITY OF CEMENT
17 1/2"	13 3/8"	48#	350'	400 sx - circ to surface
11"	8 5/8"	24#	1900'	1100 sx - circ to surface
7 7/8"	4 1/2"	10.5# & 11.6#	9400'	Sufficient to cover all pay

Propose to drill 17 1/2" hole to approximately 350' without BOPs. After cementing 13 3/8" csg and nipping up 10" API 3000 psi BOPs, will drill 11" hole to approximately 1900' using fresh water as drilling fluid. Will cement 8 5/8" casing to surface, then drill 7 7/8" hole to total depth using same BOP arrangement as before (hydraulic pipe rams, blind rams, and annular bag). Maximum mud weight should not exceed 9.4 ppg based upon nearby well data. See attached reports for other details.

Operator's gas is dedicated.

Post ID-1
10-14-83
New Loc & APE

IN ABOVE SPACE DESCRIBE PROPOSED PROGRAM: If proposal is to deepen or plug back, give data on present productive zone and proposed new productive zone. If proposal is to drill or deepen directionally, give pertinent data on subsurface locations and measured and true vertical depths. Give blowout preventer program, if any.

24.

SIGNED

R. E. Mathis

TITLE

REGULATORY COORDINATOR

DATE

9-6-83

(This space for Federal or State office use)

PERMIT NO.

APPROVAL DATE

APPROVED BY

TITLE

DATE

9/27/83

CONDITIONS OF APPROVAL, IF ANY

APPROVAL SUBJECT TO
GENERAL REQUIREMENTS AND
SPECIAL STIPULATIONS
ATTACHEDNM OGD Approval For Unorthodox Location
*See Instructions On Reverse Side
XC: BLM-R (O&G), GEN RCDS, ACCIG, MAT CONT, OPS (FILE), ROSWELL, MIDLAND, PARTNERS

All distances must be from the outer boundaries of the Section.

Operator MESA PETROLEUM CO.		Lease DEPCO FEDERAL		Well No. 2
Section Letter E	Section 4	Township 16 SOUTH	Range 28 EAST	County EDDY
Direction: Passage Location of Well: WEST 1485 feet from the NORTH line and 660 feet from the WEST line Round Level Elev. 3650 Producing Formation MORROW Pool Diamond Mound Atoka -Morrow Dedicated Acreage 270.5 Acres				

1. Outline the acreage dedicated to the subject well by colored pencil or hatchure marks on the plat below.

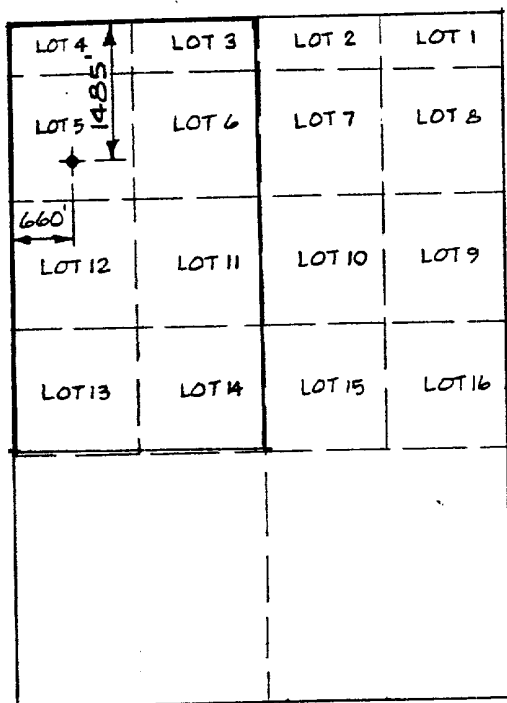
2. If more than one lease is dedicated to the well, outline each and identify the ownership thereof (both as to working interest and royalty).

3. If more than one lease of different ownership is dedicated to the well, have the interests of all owners been consolidated by communitization, unitization, force-pooling, etc?

☐ Yes ☐ No If answer is "yes," type of consolidation _____

If answer is "no," list the owners and tract descriptions which have actually been consolidated. (Use reverse side of this form if necessary.) _____

No allowable will be assigned to the well until all interests have been consolidated (by communitization, unitization, forced-pooling, or otherwise) or until a non-standard unit, eliminating such interests, has been approved by the Division.



CERTIFICATION

I hereby certify that the information contained herein is true and complete to the best of my knowledge and belief.

Lloyd Reed

Name

Lloyd Reed

Position

Regulatory Agent

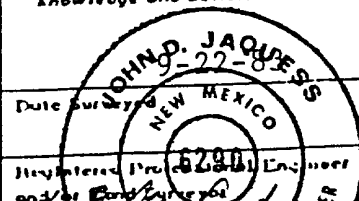
Company

Mesa Petroleum Co.

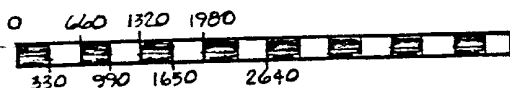
Date

23 Sept. 83

I hereby certify that the well location shown on this plat was plotted from field notes of actual surveys made by me or under my supervision, and that the same is true and correct to the best of my knowledge and belief.



Date Surveyed _____
Registered Professional Engineer and/or Land Surveyor
John D. Jaques, P.E. & L.S.
Certificate No. 6290



DESIGNATION OF OPERATOR

The undersigned is, on the records of the Bureau of Land Management, holder of lease

DISTRICT LAND OFFICE: Roswell, New Mexico

SERIAL NO.: NM-18831

and hereby designates

NAME: Mesa Petroleum Co.
ADDRESS: Suite 1000, Vaughn Building
Midland, Texas 79701

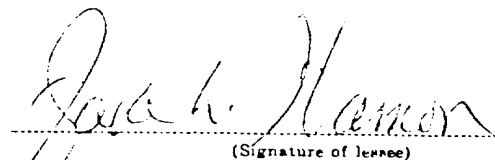
as his operator and local agent, with full authority to act in his behalf in complying with the terms of the lease and regulations applicable thereto and on whom the supervisor or his representative may serve written or oral instructions in securing compliance with the Operating Regulations with respect to (describe acreage to which this designation is applicable):

Lots 3 thru 6, Lots 11 thru 14
Section 4-T16S-R28E, NMPM
Eddy County, New Mexico

It is understood that this designation of operator does not relieve the lessee of responsibility for compliance with the terms of the lease and the Operating Regulations. It is also understood that this designation of operator does not constitute an assignment of any interest in the lease.

In case of default on the part of the designated operator, the lessee will make full and prompt compliance with all regulations, lease terms, or orders of the Secretary of the Interior or his representative.

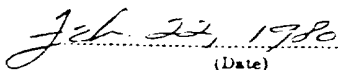
The lessee agrees promptly to notify the supervisor of any change in the designated operator.


(Signature of lessee)

Jake L. Hamon

P. O. Box 663, Dallas, Texas 75221

(Address)


(Date)

DESIGNATION OF OPERATOR

The undersigned is, on the records of the Bureau of Land Management, holder of lease

DISTRICT LAND OFFICE: Santa Fe, New Mexico
SERIAL NO.: NM-18831

and hereby designates

NAME: Mesa Petroleum Company
ADDRESS: Suite 1000 Vaughn Building
400 W Texas Avenue
Midland, Texas 79701

as his operator and local agent, with full authority to act in his behalf in complying with the terms of the lease and regulations applicable thereto and on whom the supervisor or his representative may serve written or oral instructions in securing compliance with the Operating Regulations with respect to (describe acreage to which this designation is applicable):

Township 16 South, Range 28 East, NMPM
Sec 4: Lots 3-6, 11-14

It is understood that this designation of operator does not relieve the lessee of responsibility for compliance with the terms of the lease and the Operating Regulations. It is also understood that this designation of operator does not constitute an assignment of any interest in the lease.

In case of default on the part of the designated operator, the lessee will make full and prompt compliance with all regulations, lease terms, or orders of the Secretary of the Interior or his representative.

The lessee agrees promptly to notify the supervisor of any change in the designated operator.

DEPCO, Inc.

By:

C. D. Crump
(Signature of lessee)
C. D. Crump, Vice President
1000 Petroleum Building, 110-16th St
Denver, Colorado 80202

February 15, 1980

(Date)

(Address)

APPLICATION FOR DRILLING
MESA PETROLEUM CO.
DEPCO FEDERAL #2
990' FNL & 660' FWL
SEC. 4, T16S, R28E
LEASE: NM-18831

In conjunction with permitting subject well for drilling in Section 4, Township 16 South, Range 28 East, Eddy County, New Mexico, Mesa Petroleum Co. submits the following:

1. The geologic surface formation series is Guadalupian Artesia Group.
2. The estimated tops of geologic markers are as follows:

Queen	990
San Andres	1750
Glorieta	2935
Tubb	4465
Abo	5245
Wolfcamp	6480
Bursum	7390
Strawn	8450
Atoka	8750
Morrow	8970
Miss Chester Sh	9165
Miss Chester Lm	9265
Miss Meramec Osage	9395

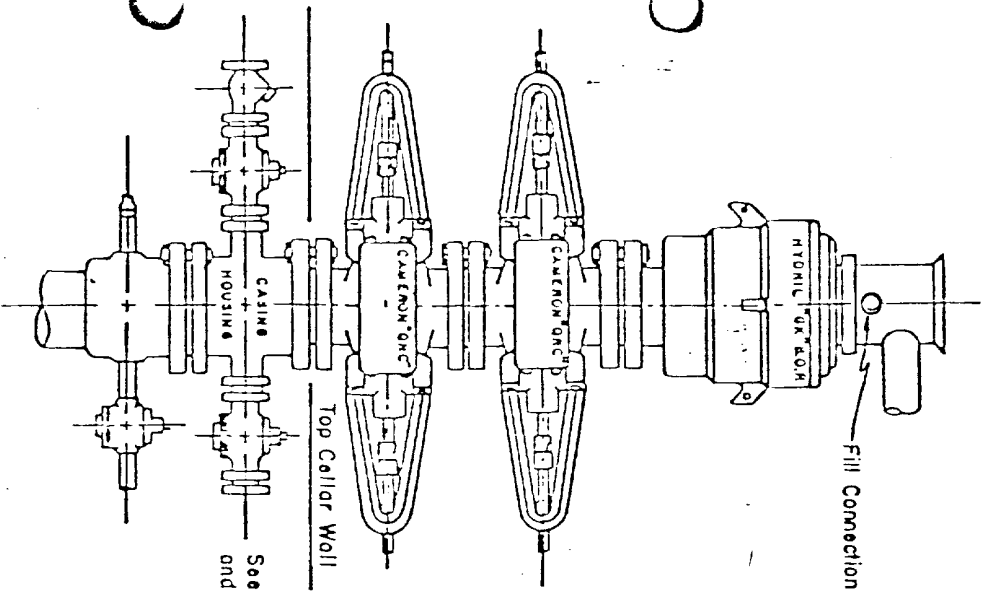
3. The depth at which water, oil, or gas are expected is:

Water	3008
Water	3508
Water	4518
Gas & Water	7648
Gas - Lower Penn	8458
Gas - Lower Penn	8758
Gas - Morrow	8978

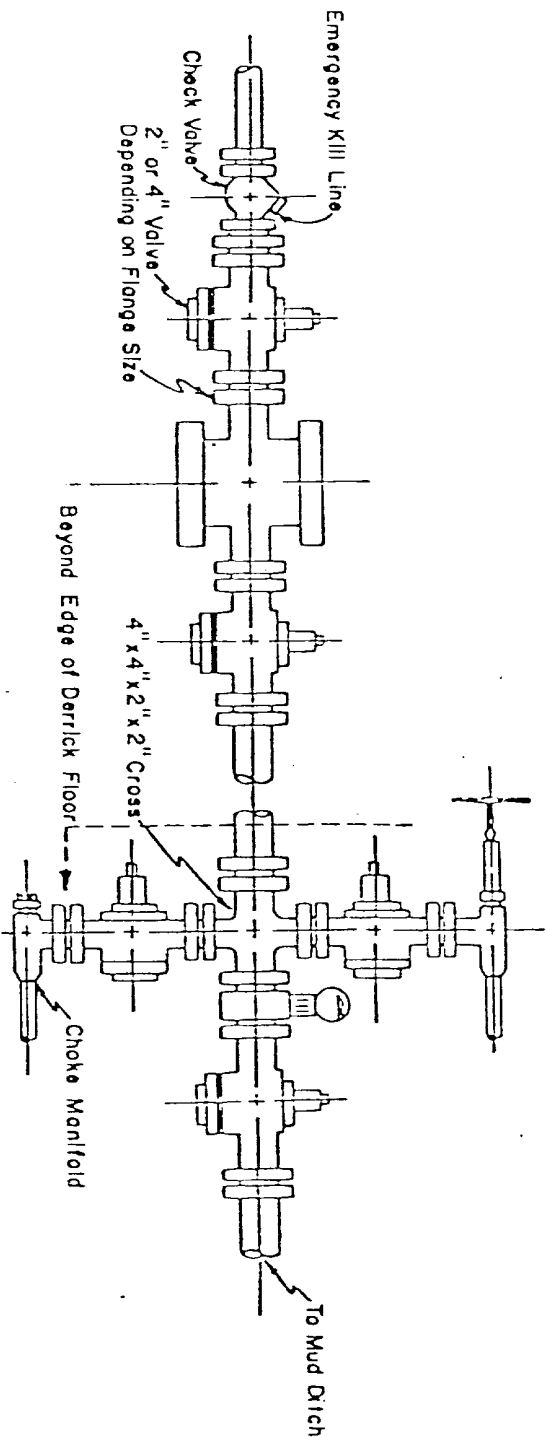
4. Casing and Blowout Preventer Program:

Surface: 350' of 13 3/8" 48#, H40, ST&C, new casing cemented with 400 sx Class "H" with 1/4# flocele and 2% CaCl or sufficient volume to circulate cement to surface. Will install 12" API 3000 psi WP bradenhead and nipple up 10" API 3000 WP ram type BOPs to drill 11" intermediate hole.

Intermediate: 1900' of 8 5/8" 24#, K55, ST&C, new casing cemented with 200 sx thick-set plus 825 sx LW with 5# gilsonite, 1/4# flocele and 2% CaCl followed by 200 sx Class "C" with 2% CaCl or sufficient volume to circulate cement to bottom of surface casing. Will nipple up 12" API 3000 WP x 10" API 3000 WP casinghead spool and install 10" API 3000 psi WP BOP stack (consisting of 1 pipe ram, 1 blind ram, 1 bag type BOP) to drill 7 7/8" production hole.



3,000 PSI WORKING PRESSURE
BLOW-OUT PREVENTER HOOK-UP



3,000 PSI WORKING PRESSURE
KILL, CHOKE, AND FILL CONNECTIONS

DETAIL OF 4" FLOW LINE CHOKE ASSEMBLY

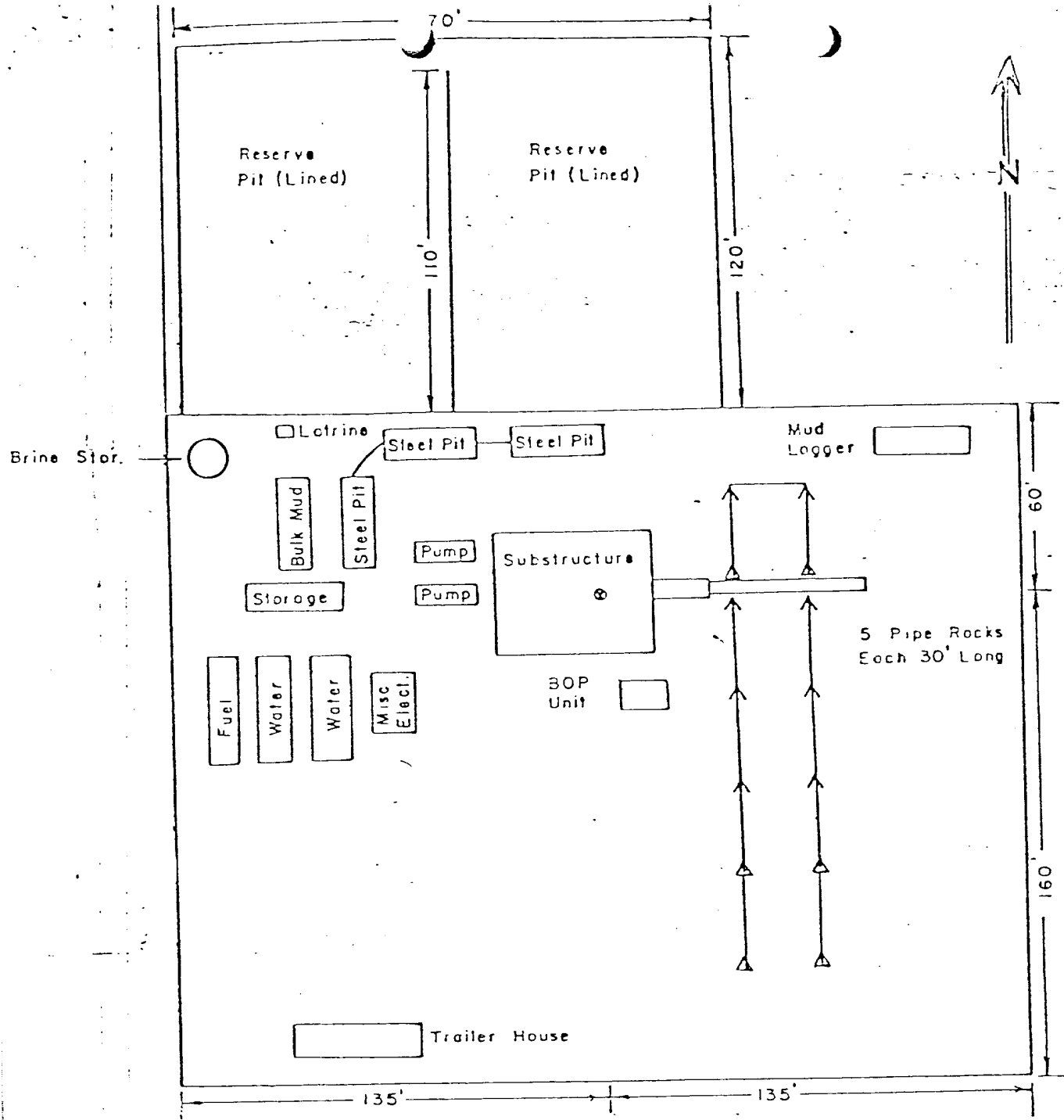
Minimum assembly for 3,000 PSI working pressure will consist of three preventers.
The bottom and middle preventers may be Cameron.




MESA
PETROLEUM CO.
ONSHORE DIVISION

EXHIBIT I

BY:	DRAWN BY:
DATE:	SCALE:





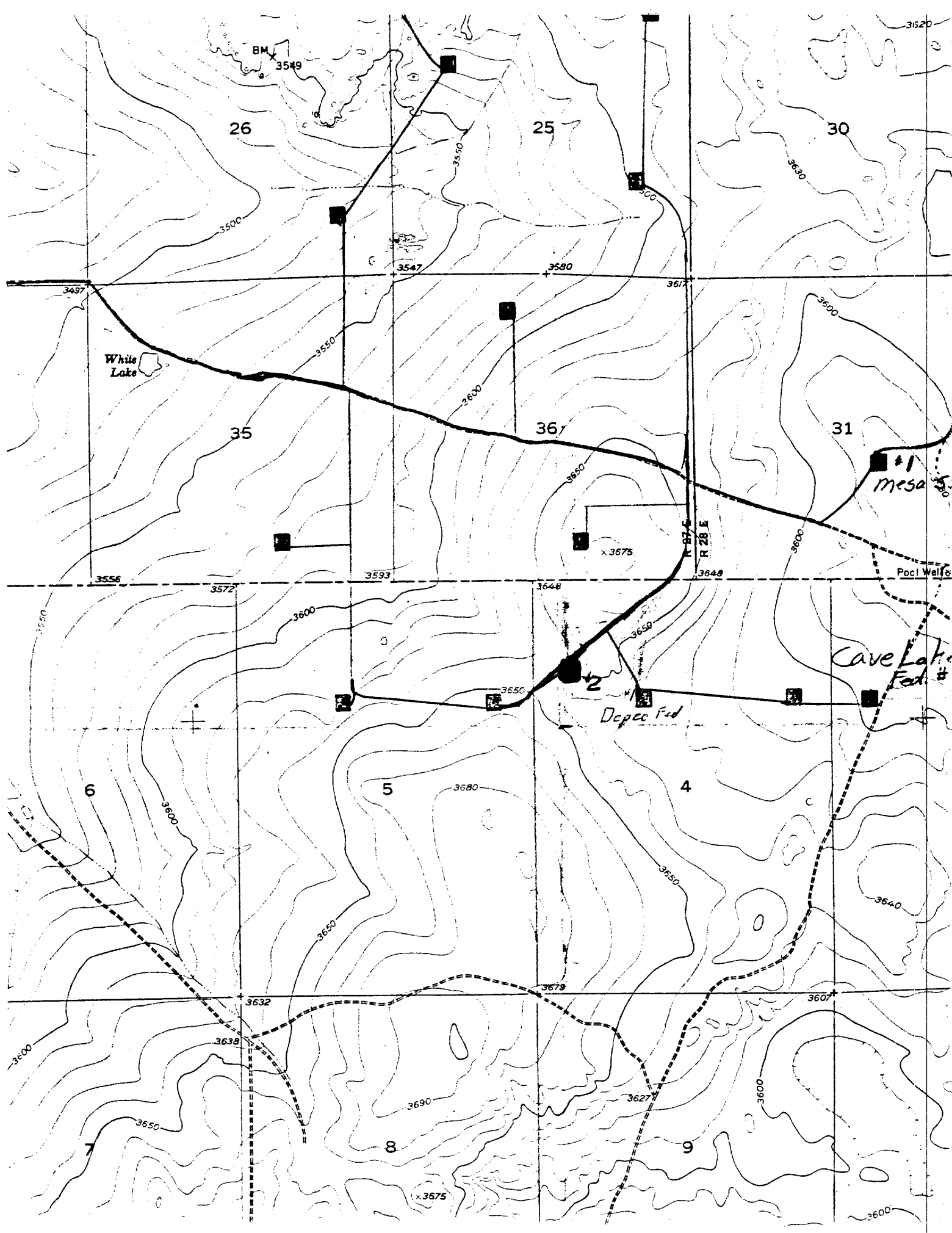
MESA

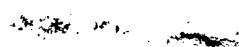
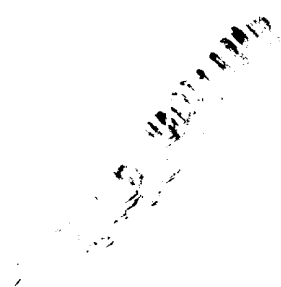
PETROLEUM CO.

ONSHORE DIVISION

EXHIBIT V

BY:	DRAWN BY:
DATE:	SCALE:







TONEY ANAYA
GOVERNOR

STATE OF NEW MEXICO
ENERGY AND MINERALS DEPARTMENT
OIL CONSERVATION DIVISION
ARTESIA DISTRICT OFFICE

October 3, 1983

P.O. DRAWER 00
ARTESIA, NEW MEXICO 88210
(505) 748-1283

Mesa Petroleum Company
P. O. Box 2009
Amarillo, Texas 79189

Re: Depco Federal
#2-D-4-16-28
Diamond Mound-Atoka Morrow

Dear Sir:

This office has received your intent to drill the above captioned well from the federal office.

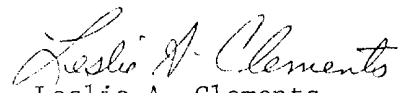
Before an API number can be issued, we will need a copy of the plat showing, by outline, which 270.5 acres has been dedicated to this well.

Due to the location of the well, you will need to file through the Santa Fe office for a Non-Standard Location approval and also for a Non-Standard Proration Unit approval.

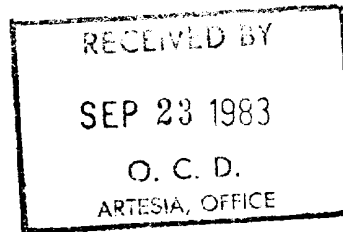
An allowable cannot be issued until the approvals are received from Santa Fe.

If we can be of any assistance, please let us know.

Sincerely,


Leslie A. Clements
Supervisor, District II

LAC:fc



September 22, 1983

Mr. R. L. Stamets
Energy and Minerals Department
New Mexico Oil Conservation Division
P. O. Box 2088
Santa Fe, New Mexico 87501

Dear Mr. Stamets:

Subject: Unorthodox Location for
Mesa Petroleum Co.
Depco Federal #2
Eddy County, New Mexico

Mesa Petroleum Co. has been informed by copy of a letter addressed to your office dated 9-19-83 regarding subject application that Amoco Production Company (USA) is willing to withdraw objection to authorization of an unorthodox location if moved to a site at least 1485' FNL of the section.

Notice is hereby given that Mesa Petroleum Co. has amended its APD to apply for a well to be drilled 1485' FNL & 660' FWL, Sec. 4, T16S, R28E as shown by attached plat.

It is further requested that since Mesa Petroleum Co. et al and Amoco et al are the only affected parties under this application, an Administrative Order be issued immediately so that drilling may commence.

Yours truly,

R. E. Mathis
Regulatory Coordinator
Onshore Operations Division

Attachment

xc: \NMOCD-Artesia
BLM-Roswell
Central Records
Operations File
Midland Office
Roswell Office
Amoco
Partners

NEW MEXICO OIL CONSERVATION COMMISSION
WELL LOCATION AND ACREAGE DEDICATION

RECEIVED
SEP 29 1983
O. G. D.
ARTESIA, OFFICE

All distances must be from the outer boundaries of the Section

MESA PETROLEUM CO		Leader		DEPCO FEDERAL	
E	4	Towards 16 SOUTH	Range 28 EAST	County	

990	feet from the	NORTH	line and	660	feet from the	WEST
3653.0	Bearing Distance		Box	Diamond Measured Acreage		270.5

- Outline the acreage dedicated to the subject well by colored pencil or hatchure marks on the plat below.
- If more than one lease is dedicated to the well, outline each and identify the ownership thereof (both as to working interest and royalty).
- If more than one lease of different ownership is dedicated to the well, have the interests of all owners been consolidated by communitization, unitization, force-pooling, etc?

☐ Yes ☐ No If answer is "yes," type of consolidation _____

If answer is "no," list the owners and tract descriptions which have actually been consolidated (Use reverse side of this form if necessary) _____

No allocation will be assigned to the well until all interests have been consolidated by communitization, unitization, force-pooling, or otherwise or until a non-standard unit, eliminating such interests, has been approved by the Commission.

CERTIFICATION

I hereby certify that the information contained herein is true and complete to the best of my knowledge and belief.

R. E. Mathis
Regional Coordinator
Mesa Petroleum Co
9-22-83

I hereby certify that the well location shown on this plat was plotted from field notes of actual surveys made by me or under my supervision, and that the same is true and correct to the best of my knowledge and belief.

Date Surveyed

9/1/83

Registered Professional Engineer and/or Land Surveyor

John W. West
Certificate No. JOHN W. WEST 676
PATRICK A. ROMERO 6683
Ronald J. Eidson 3239

