

NM OIL CONS. COMMISSION  
Drawer DD  
Artesia, NM 88200 STATES  
DEPARTMENT OF THE INTERIOR  
GEOLOGICAL SURVEYSUBMIT IN TRIPLICATE\*  
(Other instructions on  
reverse side)Form approved.  
Budget Bureau No. 42-R1425.

C/SF

30-015-24631

5. LEASE DESIGNATION AND SERIAL NO.  
NM-12832

6. IF INDIAN, ALLOTTEE OR TRIBE NAME

7. UNIT AGREEMENT NAME

8. FARM OR LEASE NAME

Federal "CD"

9. WELL NO.

6  
10. FIELD AND POOL, OR WILDCAT

Eagle Creek/SA

11. SEC., T., R., M., OR BLK.  
AND SURVEY OR AREA

Sec. 28-T17S-R25E

12. COUNTY OR PARISH 13. STATE

Eddy

NM

## 1a. TYPE OF WORK

DRILL ☒DEEPEN ☐PLUG BACK ☐

## b. TYPE OF WELL

OIL  
WELL ☒GAS  
WELL ☐

OTHER

SINGLE  
ZONE ☐MULTIPLE  
ZONE ☐

## 2. NAME OF OPERATOR

Yates Petroleum Corporation ✓

## 3. ADDRESS OF OPERATOR

207 S. 4th, Artesia, New Mexico

## 4. LOCATION OF WELL (Report location clearly and in accordance with State requirements.)

At surface

2310' FNL and 990' FWL

At proposed prod. zone

same

## 14. DISTANCE IN MILES AND DIRECTION FROM NEAREST TOWN OR POST OFFICE\*

Approximately 6 miles west of Artesia, NM

## 15. DISTANCE FROM PROPOSED\*

LOCATION TO NEAREST

PROPERTY OR LEASE LINE, FT.

(Also to nearest drlg. unit line, if any)

990'

18. DISTANCE FROM PROPOSED LOCATION\*  
TO NEAREST WELL, DRILLING, COMPLETED,  
OR APPLIED FOR, ON THIS LEASE, FT.

## 19. PROPOSED DEPTH

appr. 1450'

17. NO. OF ACRES ASSIGNED  
TO THIS WELL

40

## 20. ROTARY OR CABLE TOOLS

Rotary

## 21. ELEVATIONS (Show whether DF, RT, GR, etc.)

3578.0' GL

## 22. APPROX. DATE WORK WILL START\*

ASAP

## PROPOSED CASING AND CEMENTING PROGRAM

SIZE OF HOLE	SIZE OF CASING	WEIGHT PER FOOT	SETTING DEPTH	QUANTITY OF CEMENT
14 1/2"	10 3/4"	30#	appr. 320'	200 sx circulated
9 1/2"	7"	23#	appr. 1100'	400 sx circulated
6 1/4"	4 1/2"	9.5#	TD	125 sx circulated

Propose to drill a San Andres test. Approximately 320' of surface casing will be run to shut off gravel and caving. 7" intermediate casing will be run and set 100' below the Artesian Zone. If commercial production is encountered, a string will be run, perforate and stimulated for production.

MUD PROGRAM: FW gel/LCM to 1150' (or dry drill), water to TD.

BOP PROGRAM: If needed, BOP's will be installed on 7" casing and tested daily.

IN ABOVE SPACE DESCRIBE PROPOSED PROGRAM: If proposal is to drill or plug back, give data on present productive zone and proposed new productive zone. If proposal is to drill or deepen directionally, give pertinent data on subsurface locations and measured and true vertical depths. Give blowout preventer program, if any.

24.

SIGNED

*Cy Cowan*

TITLE Regulatory Agent

DATE 9/30/83

(This space for Federal or State office use)

PERMIT NO.

APPROVAL DATE

APPROVED BY

*A. U. Lopez*

TITLE

DATE

10/2/83

CONDITIONS OF APPROVAL, IF ANY

APPROVAL SUBJECT TO  
GENERAL REQUIREMENTS AND  
SPECIAL STIPULATIONS  
ATTACHED

RECEIVED

SEP 30 1983

OIL &amp; GAS

ROSWELL, NEW MEXICO

RECEIVED BY

OCT 13 1983

NEW MEXICO OIL CONSERVATION COMMISSION  
WELL LOCATION AND ACREAGE DEDICATION PLAT

Form C-102  
Supersedes C-128  
Effective 1-1-65

All distances must be from the outer boundaries of the Section

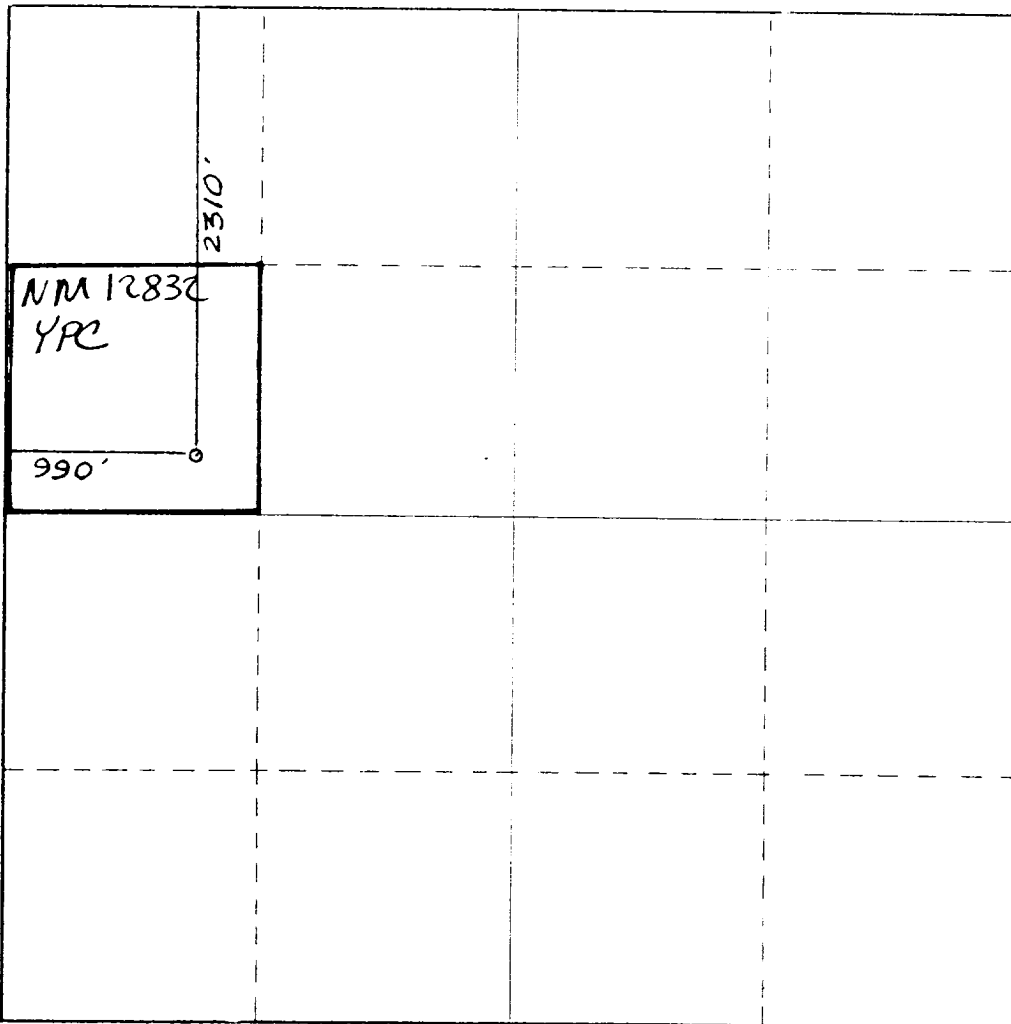
Operator <b>YATES PETROLEUM CORPORATION</b>			Lease <b>Federal CD</b>		Well No. <b>6</b>
Tract Letter <b>E</b>	Section <b>28</b>	Township <b>17 South</b>	Range <b>25 East</b>	County <b>Eddy</b>	
Actual Location of Well:					
<b>2310</b> feet from the <b>North</b> line of		<b>990</b> feet from the <b>West</b> line of			
Ground Level Elevation <b>3578.</b>	Producing Formation <b>SAN ANDRES</b>	Well <b>Eagle Creek (SA)</b>	Estimated Acreage <b>40</b> Acres		

1. Outline the acreage dedicated to the subject well by colored pencil or hachure marks on the plat below.
2. If more than one lease is dedicated to the well, outline each and identify the ownership thereof (both as to working interest and royalty).
3. If more than one lease of different ownership is dedicated to the well, have the interests of all owners been consolidated by communitization, unitization, force-pooling, etc?

☐ Yes ☒ No If answer is "yes," type of consolidation \_\_\_\_\_

If answer is "no," list the owners and tract descriptions which have actually been consolidated. (Use reverse side of this form if necessary.) \_\_\_\_\_

No allowable will be assigned to the well until all interests have been consolidated (by communitization, unitization, force-pooling, or otherwise) or until a non-standard unit, eliminating such interests, has been approved by the Commission.



CERTIFICATION

I hereby certify that the information contained herein is true and complete to the best of my knowledge and belief.

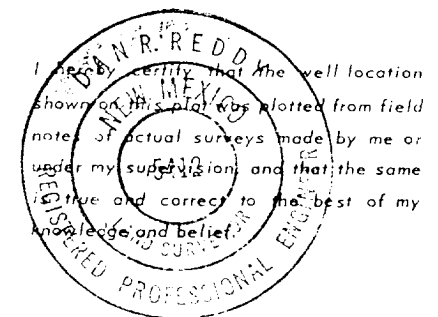
*Cy Cowan*

Name  
**Cy Cowan**

Position  
**Regulatory Agent**

Company  
**Yates Petroleum Corp.**

Date  
**9/30/83**



Date Surveyed

**September 26, 1983**

Registered Professional Engineer  
and/or Land Surveyor

*San R. Redd*

Certificate No.

**NM PE&LS #5412**

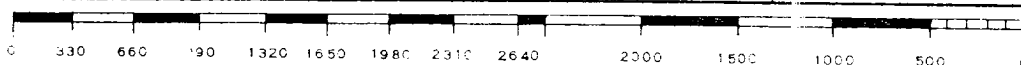
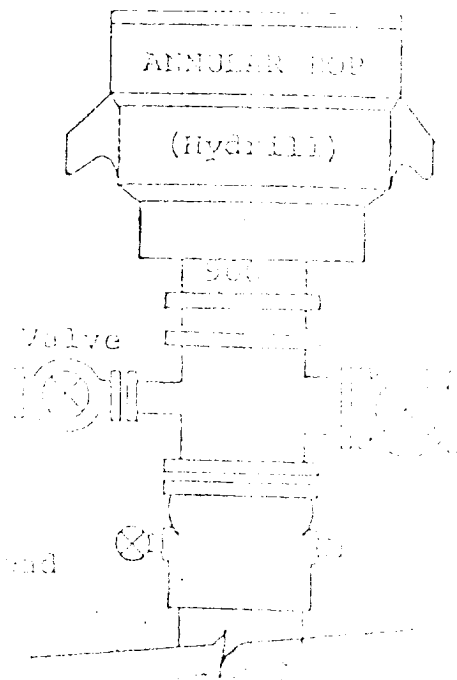


EXHIBIT B

BOP DIAGRAM

RATED 3000<sup>#</sup>



YATES PETROLEUM CORPORATION  
Federal "CD #6  
2310' FNL and 990' FWL  
Sec. 28-T17S-R25E

In conjunction with Form 9-331C, Application for Permit to Drill subject well, Yates Petroleum Corporation submits the following ten items of pertinent information in accordance with USGS requirements.

1. The geologic surface formation is quaternary alluvium.

2. The estimated tops of geologic markers are as follows:

TD appr. 1450'

3. The estimated depths at which anticipated water, oil or gas formations are expected to be encountered:

Water: 150-350' and 700-950'

Oil or Gas: San Andres 1300-1400'

4. Proposed Casing Program: See Form 9-331C.

5. Pressure Control Equipment: See Form 9-331C.

6. Mud Program: See Form 9-331C.

7. Auxiliary Equipment: Kelly Cock; pit level indicators and flow sensor equipment; sub with full-opening valve on floor, drill pipe connection.

8. Testing, Logging and Coring Program:

Samples: 10' samples from under surface

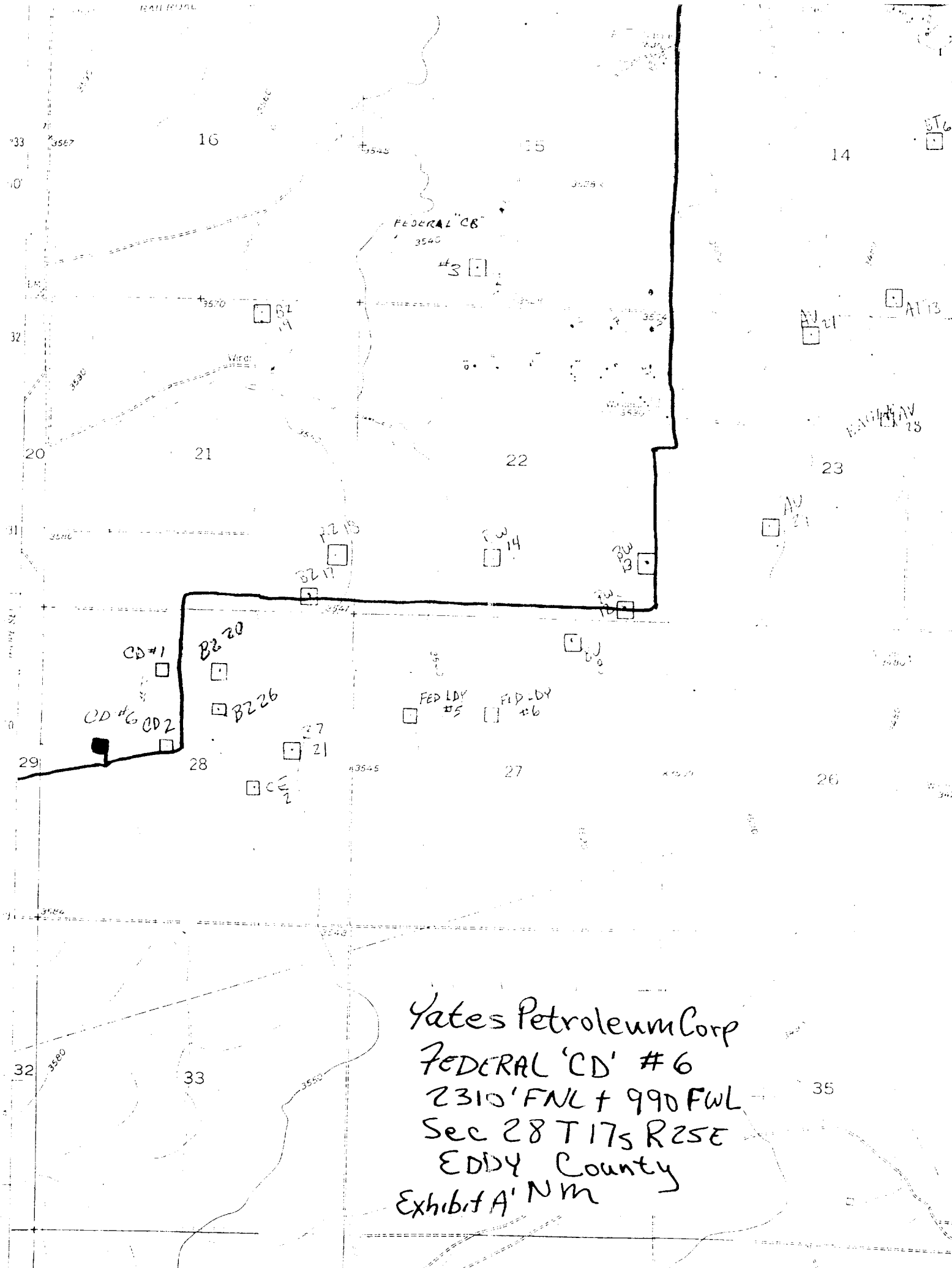
DST's: none

Coring: none

Logging: GR-Nuetron

9. No abnormal pressures or temperatures are anticipated.

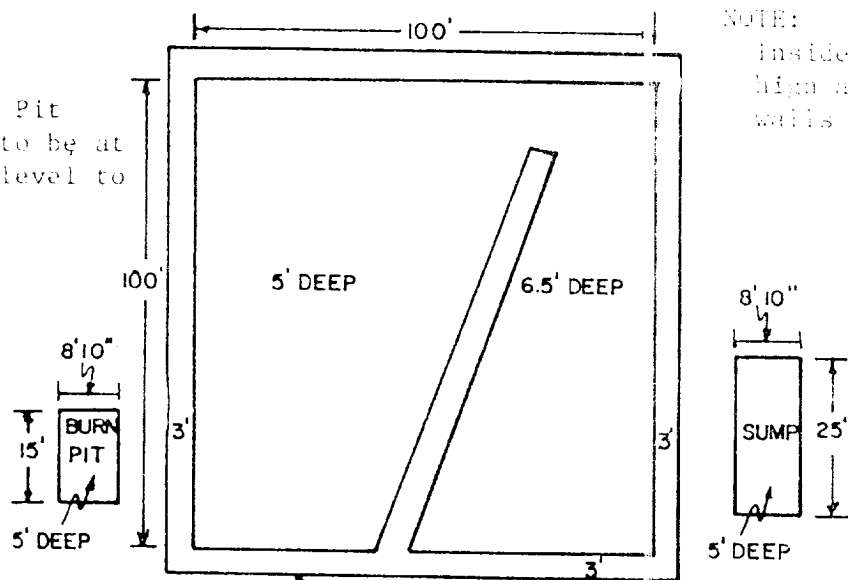
10. Anticipated starting date: As soon as possible after approval.



# YATES PETROLEUM CORP.

## Exhibit C

Reserve Pit  
bottom to be at  
ground level to  
fit.



NOTE:

Inside walls must be as  
high and wide as outer  
walls of pit.

