

UNITED STATES  
DEPARTMENT OF THE INTERIOR  
GEOLOGICAL SURVEY

C/SF

30-015-24634  
5. LEASE DESIGNATION AND SERIAL NO.

NM-15664

6. IF INDIAN, ALLOTTEE OR TRIBE NAME

7. UNIT AGREEMENT NAME

8. FARM OR LEASE NAME

Federal "EF"

9. WELL NO.

3

10. FIELD AND POOL, OR WILDCAT

Eagle Creek/SA

11. SEC., T., R., M., OR BLK.  
AND SURVEY OR AREA

Sec. 31-T17S-R25E

12. CO. STY OR PARISH 13. STATE

Eddy

NM

17. NO. OF ACRES ASSIGNED  
TO THIS WELL

40

20. ROTARY OR CABLE TOOLS

Rotary

22. APPROX. DATE WORK WILL START\*

ASAP

## APPLICATION FOR PERMIT TO DRILL, DEEPEN, OR PLUG BACK

1a. TYPE OF WORK

DRILL ☒DEEPEN ☐

OCT 13 1983

b. TYPE OF WELL

OIL ☒GAS ☐

OTHER

SINGLE ZONE ☒ D. D. MULTIPLE ZONE ☐

2. NAME OF OPERATOR

Yates Petroleum Corporation

3. ADDRESS OF OPERATOR

207 S. 4th, Artesia, New Mexico 88210

4. LOCATION OF WELL (Report location clearly and in accordance with any State requirements.)\*

At surface  
330' FNL and 990' FELAt proposed prod. zone  
same

14. DISTANCE IN MILES AND DIRECTION FROM NEAREST TOWN OR POST OFFICE\*

Approximatley 6 miles SW of Artesia, New Mexico.

15. DISTANCE FROM PROPOSED\*

LOCATION TO NEAREST  
PROPERTY OR LEASE LINE, FT.  
(Also to nearest drlg. unit line, if any.)

16. NO. OF ACRES IN LEASE

18. DISTANCE FROM PROPOSED LOCATION\*

TO NEAREST WELL, DRILLING, COMPLETED,  
OR APPLIED FOR, ON THIS LEASE, FT.

19. PROPOSED DEPTH

1400'

21. ELEVATIONS (Show whether DF, RT, GR, etc.)

3617' GL

23

## PROPOSED CASING AND CEMENTING PROGRAM

SIZE OF HOLE	SIZE OF CASING	WEIGHT PER FOOT	SETTING DEPTH	QUANTITY OF CEMENT
14 1/2"	10 3/4"	30#	appr. 320'	200 sx circulated
9 1/2"	7"	20#	appr. 1100'	600 sx circulated
6 1/4"	4 1/2"	10.5#	TD	200 sx circulated

We propose to drill and test the San Andres and intermediate formations. Approximately 320' of surface casing will be set and cement circulated to shut off gravel and caving. 7" intermediate casing will be run and set 100' below the Artesian Zone. If commercial, production casing will be run and cemented with adequate cover, perforated and stimulated as needed for production.

MUD PROGRAM: FW gel/LCM to 1100' (or dry drill) water to TD.

BOP PROGRAM: BOP's will be installed at the offset and tested daily.

IN ABOVE SPACE DESCRIBE PROPOSED PROGRAM: If proposal is to drill or plug back, give data on present productive zone and proposed new productive zone. If proposal is to drill or deepen directionally, give present data on subsurface locations and measured and true vertical depths. Give blowout preventer program, if any.

24.

SIGNED

TITLE Regulatory Agent

DATE 10/3/83

(This space for Federal or State office use)

ROSWELL, NEW MEXICO

PERMIT NO.

APPROVAL DATE

APPROVED BY

TITLE

DATE

CONDITIONS OF APPROVAL, IF ANY:

APPROVAL SUBJECT TO  
GENERAL REQUIREMENTS AND  
SPECIAL STIPULATIONS

NEW MEXICO OIL CONSERVATION COMMISSION  
WELL LOCATION AND ACREAGE DEDICATION PLAT

Form O-102  
Supersedes C-128  
Effective 1-1-65

All distances must be from the outer boundaries of the Section

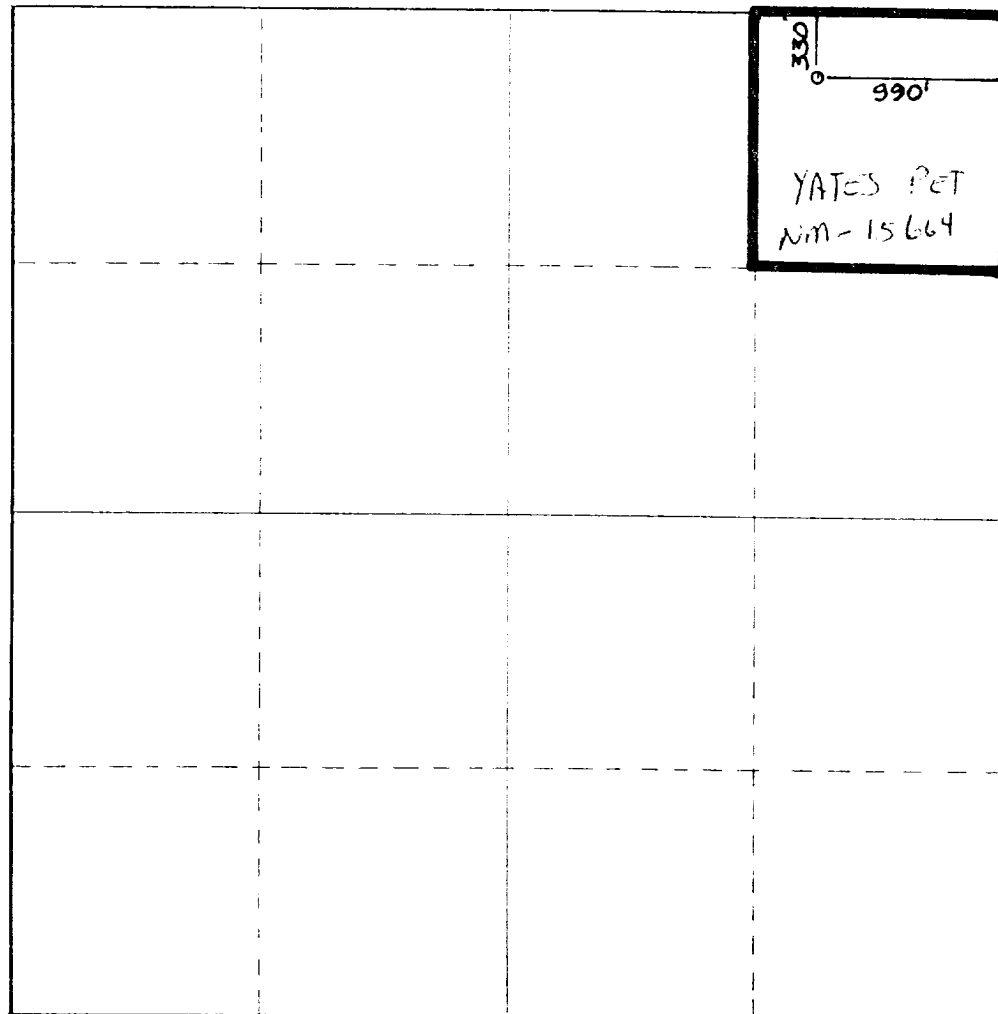
Operator <b>YATES PETROLEUM CORPORATION</b>			Lease <b>Federal EF</b>		Well No. <b>3</b>
Plot Letter <b>A</b>	Section <b>31</b>	Township <b>17 South</b>	Range <b>25 East</b>	County <b>Eddy</b>	
Approximate Location of Well: <div style="display: flex; justify-content: space-between;"> <span><b>330</b> feet from the <b>North</b> line and</span> <span><b>990</b> feet from the <b>East</b> line</span> </div>					
Ground Level Elev. <b>3617.</b>	Producing Formation <b>San Andres</b>	Pool <b>Eagle Creek / SA</b>	Estimated Acreage <b>40</b>		

1. Outline the acreage dedicated to the subject well by colored pencil or hatchure marks on the plat below.
2. If more than one lease is dedicated to the well, outline each and identify the ownership thereof (both as to working interest and royalty).
3. If more than one lease of different ownership is dedicated to the well, have the interests of all owners been consolidated by communitization, unitization, force-pooling, etc?

☐ Yes    ☐ No    If answer is "yes," type of consolidation \_\_\_\_\_

If answer is "no," list the owners and tract descriptions which have actually been consolidated. (Use reverse side of this form if necessary.) \_\_\_\_\_

No allowable will be assigned to the well until all interests have been consolidated (by communitization, unitization, forced-pooling, or otherwise) or until a non-standard unit, eliminating such interests, has been approved by the Commission.



**CERTIFICATION**

I hereby certify that the information contained herein is true and complete to the best of my knowledge and belief.

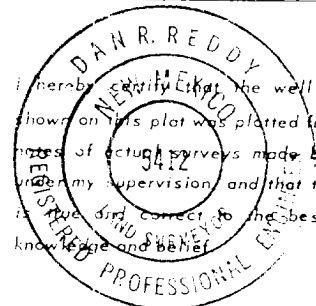
*Ken Beardemphl*

**Ken Beardemphl**

**Regulatory Agent**

**Yates Petroleum Corp.**

**10/3/83**



I hereby certify that the well location shown on this plat was plotted from field notes of actual surveys made by me or under my supervision and that the same is true and correct to the best of my knowledge and belief.

Date Surveyed

**October 1, 1983**

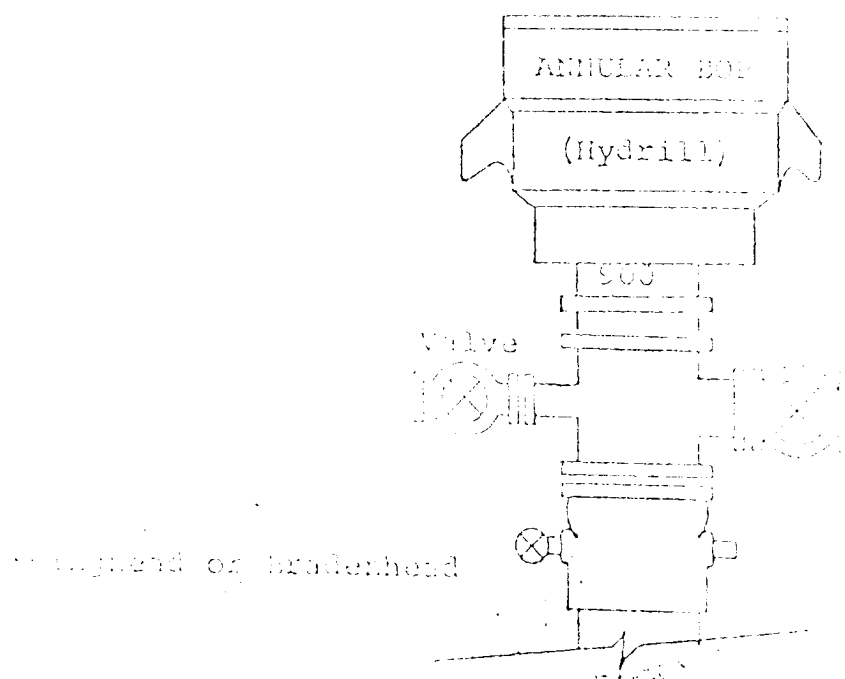
Registered Professional Engineer and Land Surveyor

*Dan R. Reddy*

Certificate No.  
**NM PE&LS #5412**

0 330 660 990 1320 1650 1980 2310 2640 2970 3300 3630 3960 4290 4620 4950 5280 5610 5940 6270 6600

EXHIBIT B  
BDP DIAGRAM  
RATED 3000<sup>HP</sup>



YATES PETROLEUM CORPORATION  
Federal "EF" #3  
330' FNL and 990' FEL  
Sec. 31-T17S-R25E  
Eddy County, New Mexico

In conjunction with Form 9-331C, Application for Permit to Drill subject well, Yates Petroleum Corporation submits the following ten items of pertinent information in accordance with USGS requirements.

1. The geologic surface formation is quaternary alluvium.
2. The estimated tops of geologic markers are as follows:

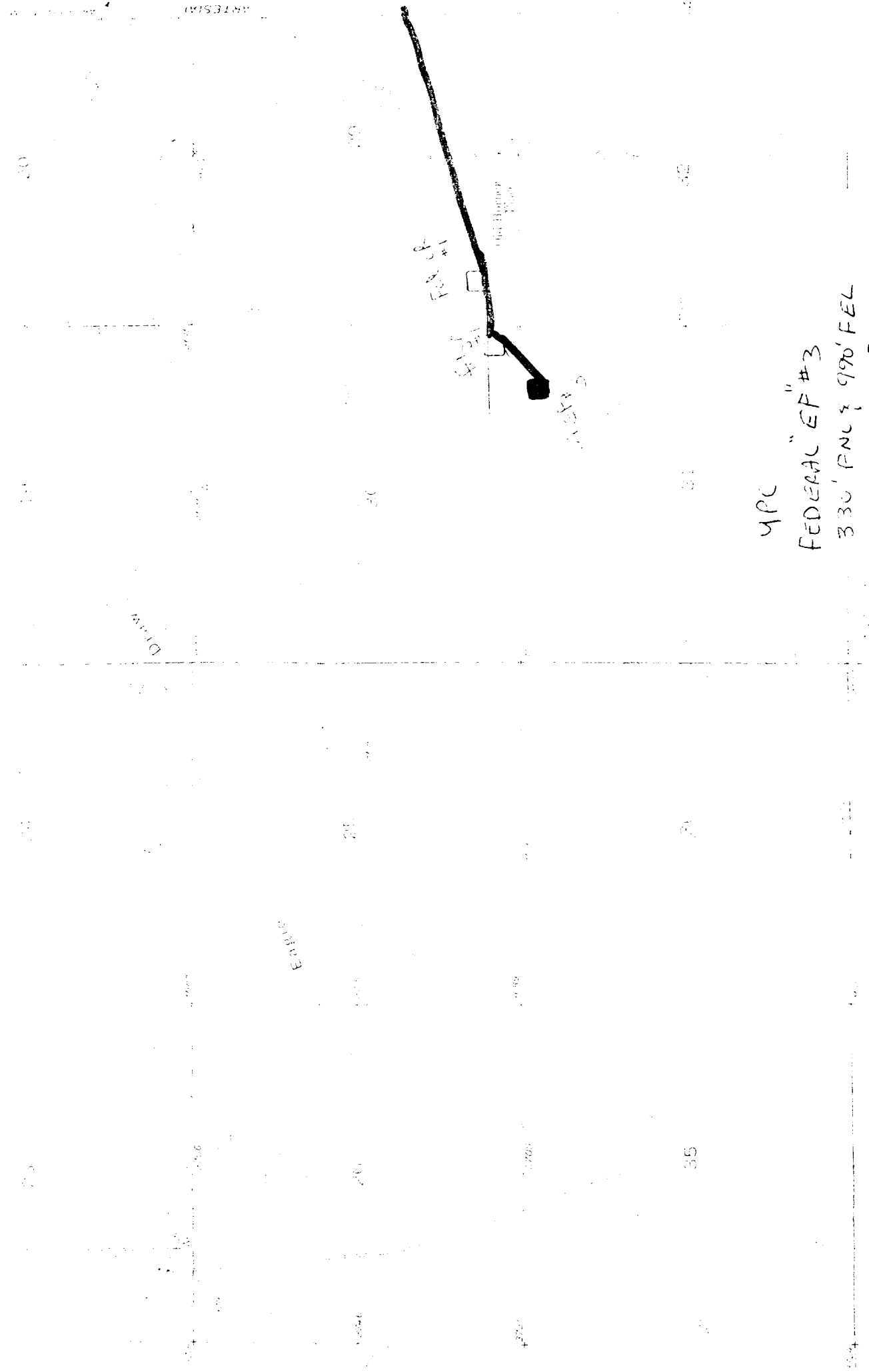
TD 1400'

3. The estimated depths at which anticipated water, oil or gas formations are expected to be encountered:

Water: 150'-350' and 700'-950'

Oil or Gas: San andres 1300'-1400'

4. Proposed Casing Program: See Form 9-331C.
5. Pressure Control Equipment: See Form 9-331C.
6. Mud Program: See Form 9-331C.
7. Auxiliary Equipment: Kelly Cock; pit level indicators and flow sensor equipment; sub with full-opening valve on floor, drill pipe connection.
8. Testing, Logging and Coring Program:  
Samples: 10' samples from under surface.  
DST's: none  
Coring: none  
Logging: GR-Nuetron
9. No abnormal pressures or temperatures are anticipated.
10. Anticipated starting date: As soon as possible after approval.

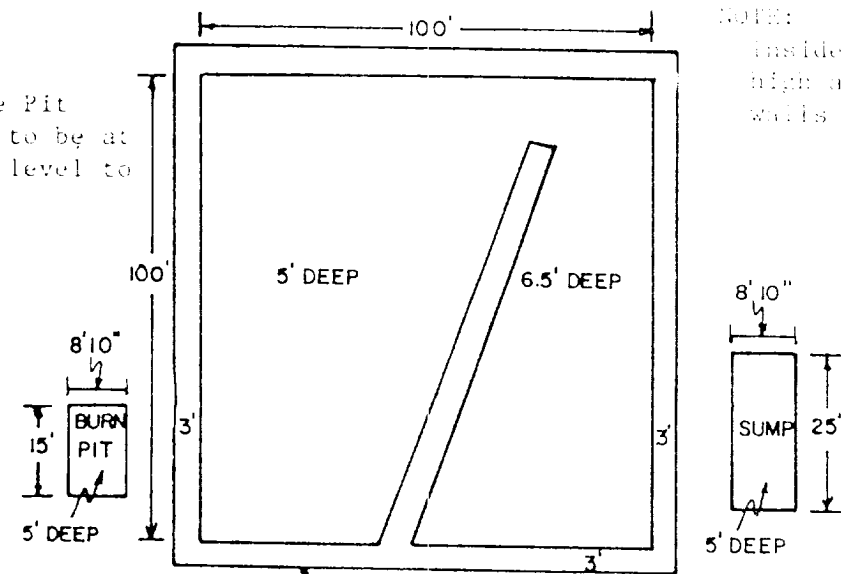


4PC  
FEDERAL "EP" #3  
330' PNC & 990' FEL  
Sec. 31-T17S-R25E  
EDDY COUNTY, NM  
EXHIBIT A

# YATES PETROLEUM CORP.

## Exhibit C

Reserve Pit  
bottom to be at  
ground level to  
1 ft.



NOTE:

inside walls must be as  
high and wide as outer  
walls of pit.

