

## APPLICATION FOR PERMIT TO DRILL, DEEPEN, OR PLUG BACK

1a. TYPE OF WORK

DRILL ☒DEEPEN ☐

NOV 09 1983

PLUG BACK ☐

b. TYPE OF WELL

OIL  
WELL ☒GAS  
WELL ☐OTHER ☐

2. NAME OF OPERATOR

Anadarko Production Company

3. ADDRESS OF OPERATOR

P. O. Drawer 130, Artesia, New Mexico 88210

4. LOCATION OF WELL (Report location clearly and in accordance with any State requirements.)\*

At surface

1370' FSL &amp; 927' FWL Sec. 31, T16S, R31E

At proposed prod. zone

Same

Eddy County, New Mexico

14. DISTANCE IN MILES AND DIRECTION FROM NEAREST TOWN OR POST OFFICE\*

Approximately 7 miles Northeast of Loco Hills, New Mexico

15. DISTANCE FROM PROPOSED\*

LOCATION TO NEAREST  
PROPERTY OR LEASE LINE, FT.  
(Also to nearest drlg. unit line, if any)

330'

16. NO. OF ACRES IN LEASE

30.99

17. NO. OF ACRES ASSIGNED  
TO THIS WELL

30.99

18. DISTANCE FROM PROPOSED LOCATION\*  
TO NEAREST WELL, DRILLING, COMPLETED,  
OR APPLIED FOR, ON THIS LEASE, FT.

None

19. PROPOSED DEPTH

3350'

20. ROTARY OR CABLE TOOLS

Rotary

21. ELEVATIONS (Show whether DF, RT, GR, etc.)

3805.1 GL

22. APPROX. DATE WORK WILL START\*

Nov. 14, 1983

## PROPOSED CASING AND CEMENTING PROGRAM

SIZE OF HOLE	SIZE OF CASING	WEIGHT PER FOOT	SETTING DEPTH	QUANTITY OF CEMENT
12-1/4"	8-5/8"	24.0#	550'	Approx. 600 sx - circulated
7-7/8"	5-1/2"	15.5#	3350'	Approx. 1000 sx - circulated

1. Rig up Rotary Tools.
2. Drill 12-1/4" hole to approx. 550'; set & circulate or ready-mix cement to surface on 8-5/8" casing; install & test Series 900 Double Ram Hydraulic Blowout Preventor.
3. Drill 7-7/8" hole to T D (approx. 3350'); run Open Hole Logs.
4. Set & circulate cement on 5-1/2" casing from T D to surface.
5. Perforate, acidize and fracture treat.
6. Run 2-3/8" tubing, rods and bottomhole pump; install pumping equipment and place well on production.

Note: Hearing scheduled in Santa Fe for unorthodox location.

IN ABOVE SPACE DESCRIBE PROPOSED PROGRAM: If proposal is to deepen or plug back, give data on present productive zone and proposed new productive zone. If proposal is to drill or deepen directionally, give pertinent data on subsurface locations and measured and true vertical depths. Give blowout preventer program, if any.

SIGNED

Truman D. Jones

TITLE

Field Foreman

DATE

October 31, 1983

(This space for Federal or State office use)

PERMIT NO.

S/Richard Bastin

APPROVAL DATE

APPROVED BY

Associate District Manager

DATE

NOV 28 1983

CONDITIONS OF APPROVAL, IF ANY:

APPROVAL SUBJECT TO  
GENERAL REQUIREMENTS AND  
SPECIAL STIPULATIONS  
ATTACHED

\*See Instructions On Reverse Side

NM OCD approval for  
unorthodox location

**NEW MEXICO OIL CONSERVATION COMMISSION  
WELL LOCATION AND ACREAGE DEDICATION PLAT**

Form C-102  
Supersedes C-128  
Effective 1-1-65

All distances must be from the outer boundaries of the Section.

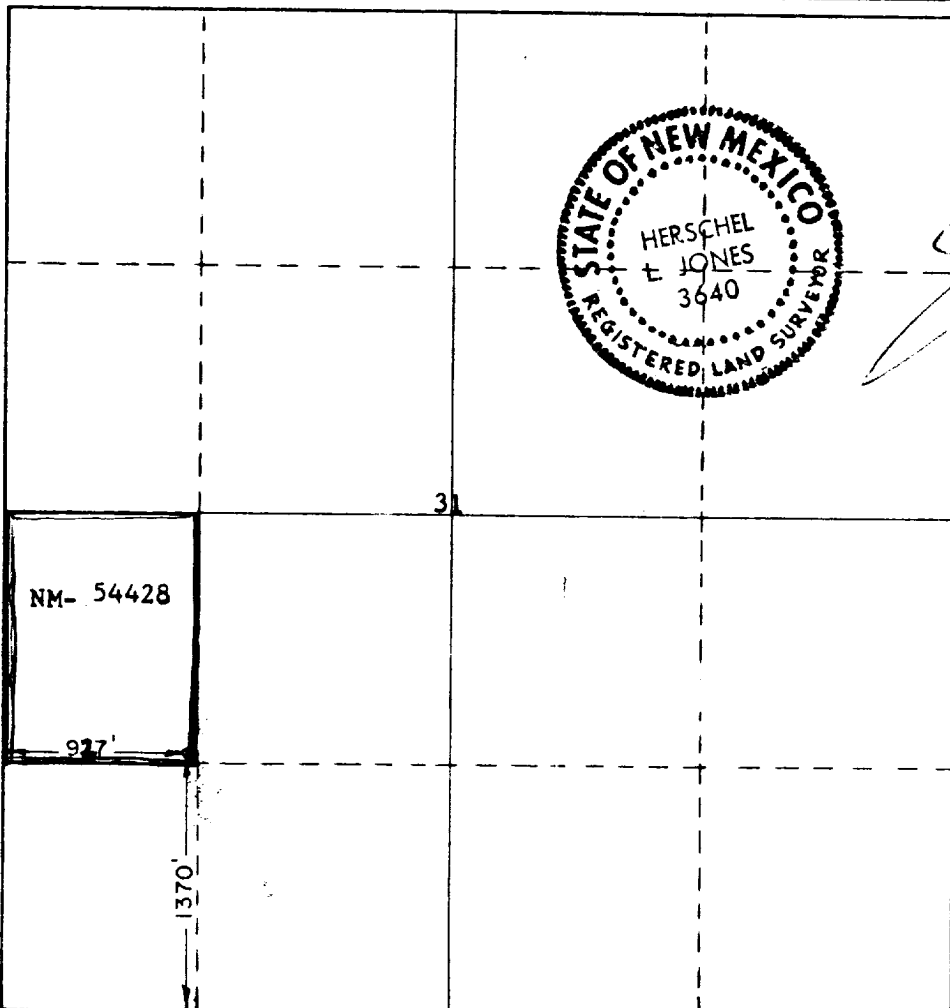
Operator <b>ANADARKO PRODUCTION COMPANY</b>			Lease <b>GRIER "B" Federal</b>		Well No. <b>2</b>
Unit Letter <b>L</b>	Section <b>31</b>	Township <b>16 South</b>	Range <b>31 East</b>	County <b>Eddy</b>	
Actual Footage Location of Well: <b>927.0</b> feet from the <b>West</b> line and <b>1370.0</b> feet from the <b>South</b> line					
Ground Level Elev. <b>3805.1</b>	Producing Formation <b>Grayburg-San Andres</b>		Pool <b>Square Lake</b>	Dedicated Acreage: <b>30.99</b> Acres	

1. Outline the acreage dedicated to the subject well by colored pencil or hachure marks on the plat.
2. If more than one lease is dedicated to the well, outline each and identify the ownership thereof (from as to working interest and royalty).
3. If more than one lease of different ownership is dedicated to the well, have the interests of all owners been consolidated by communitization, unitization, force-pooling, etc?

☐ Yes ☐ No If answer is "yes," type of consolidation \_\_\_\_\_

If answer is "no," list the owners and tract descriptions which have actually been consolidated (use reverse side of this form if necessary.) \_\_\_\_\_

No allowable will be assigned to the well until all interests have been consolidated (by communitization, unitization, forced-pooling, or otherwise) or until a non-standard unit, eliminating such interests, has been approved by the Commission.



**CERTIFICATION**

I hereby certify that the information contained herein is true and complete to the best of my knowledge and belief.

*[Signature]*  
**JERRY E. BUCKLES**

Position  
**Area Supervisor**

Company  
**Anadarko Production Company**

Date  
**October 31, 1983**

I hereby certify that the well location shown on this plat was plotted from field notes of actual surveys made by me or under my supervision, and that the same is true and correct to the best of my knowledge and belief.

Date Surveyed  
**10/28/83**

Registered Professional Engineer  
and/or Land Surveyor

*[Signature]*  
Certificate No.  
**3640**

"00" JAZZETTE

100% Anadarko - Acreage purchased from Bob Boling.

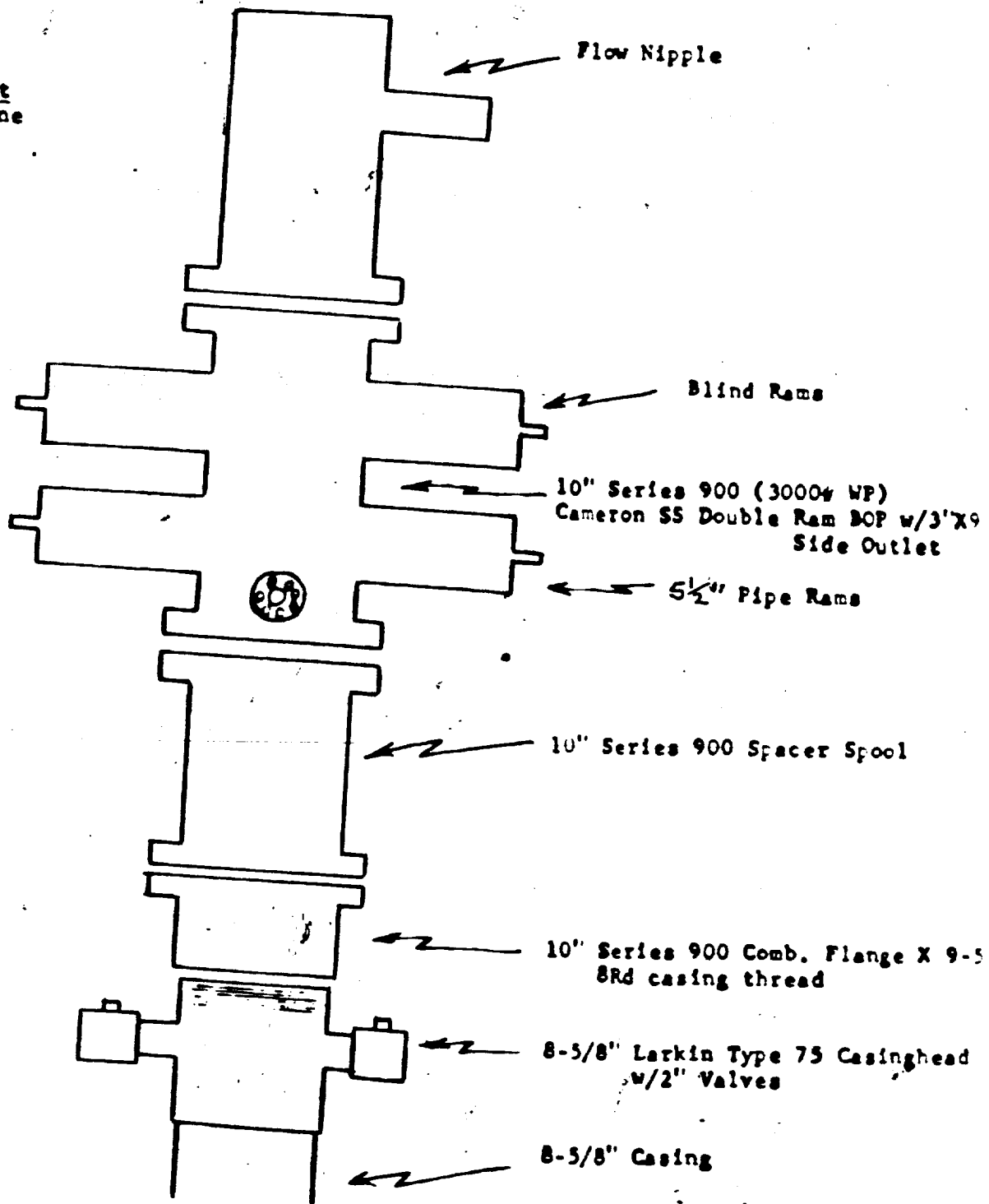
# Anadarko

PRODUCTION COMPANY

P O Box 67 • Locc Hills New Mexico 88256 • (505) 877 2411

A  
Panhandle  
Eastern  
Company

Closing Unit  
4 Stage Payne



B O P Schematic

This data sheet is provided in reference to the attached "Application for Permit to Drill: Anadarko's Grier "B" Federal #2.

1. Location: 1370' FSL & 927' FWL Sec. 31, T16S, R31E, Eddy County, New Mexico
2. Elevation: 3805.1' GL
3. Geological Name of Surface Formation: Triassic Rock
4. Type of Drilling Tools to be utilized: Rotary Tools
5. Proposed Drilling Depth: 3350'
6. Tops of Important Geological Markers:

T. Salt - - 520'	7-Rivers - - 1640'
B. Salt - - 1400'	Queen - - - 2180'
Tansill - - 1400'	Grayburg - - 2845'
Yates - - - 1520'	San Andres - 3155'
7. Estimated Depth of Anticipated Water, Oil or Gas:

Oil: - - 3080' - 3300'
8. Casing Program:

8-5/8" - 24.0# K-55 or J-55 - New  
5-1/2" - 15.5# K-55 or J-55 - New
9. Setting Depth of Casing:

8-5/8" - 550' - approx. 600 sx cement  
5-1/2" - 3350' - approx. 1000 sx cement
10. Specifications for Pressure Control Equipment: (See attached Schematic)

This rig will have a Series 900 BOP with 4" Blind Rams, kill line and choke manifold; Koomey Hydraulic controls & accumulator with remote controls. When nipping up, test BOP and Choke to 1000 psi. Operate BOP equipment once a day, or as directed by Company Representative.
11. Mud Program:

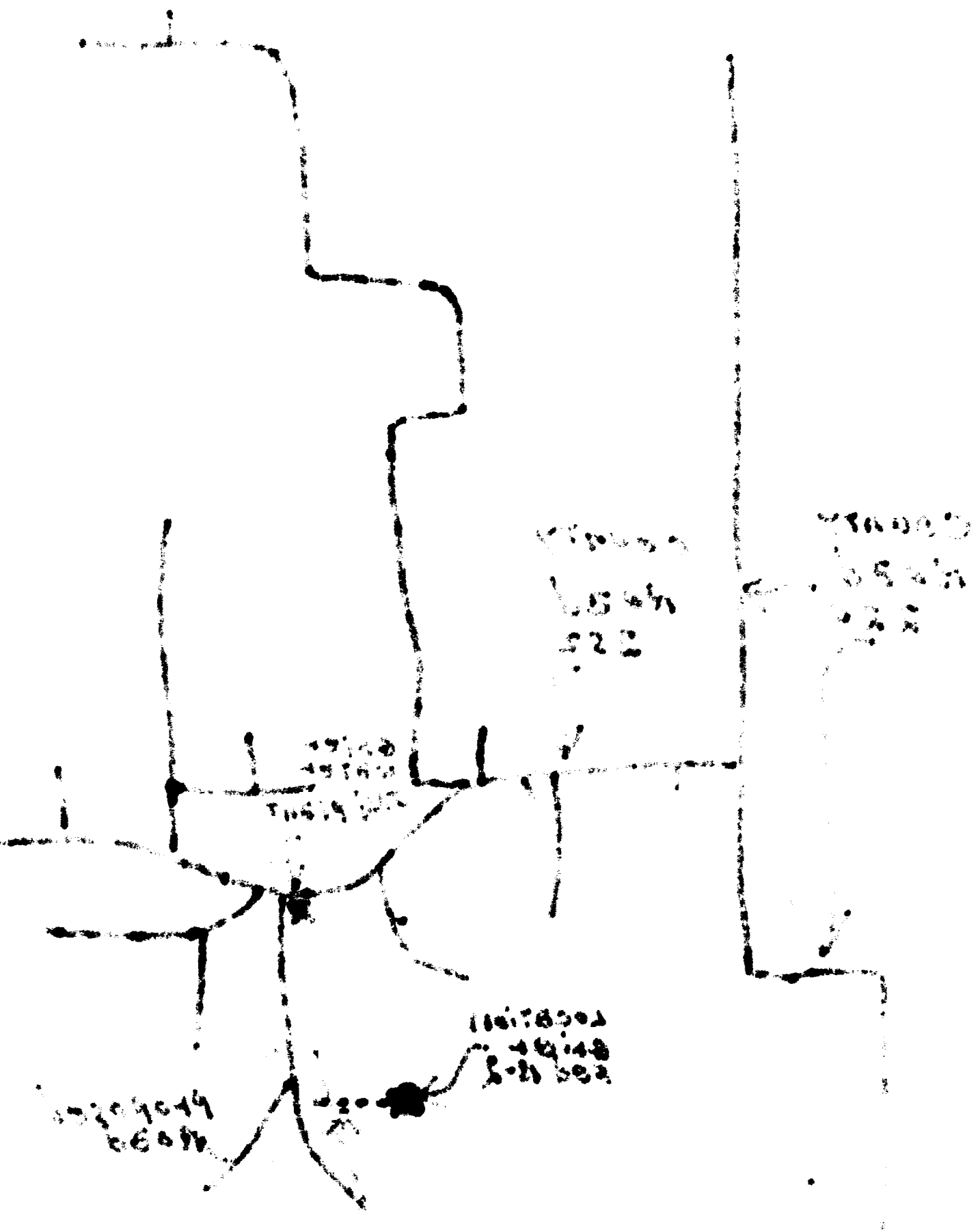
Spud and drill with Fresh water to a depth of approx. 550'. Drill out from under surface casing with 10# brine water mud to within 50' of TD while maintaining a Ph of 10. At this point paper & gel will be used to clean hole prior to running O. H. Logs.
12. Testing, Logging & Coring Program:
  - a. Testing: No drill stem tests will be conducted.
  - b. Coring: No coring is planned but there is a possibility the well will be cored.
  - c. Logging: Open Hole Logs will be run prior to running 5½" casing.
13. Potential Hazards:

None are expected. Above described BOP should take care of any blowout. Numerous wells have been drilled in this area without problems.
14. Anticipated Starting Date & Duration:

Plans are to begin drilling operations about November 14, 1983; approx. 6 days will be required to drill the well and 2 weeks for completion.
15. Other Facets:

None.





1544  
222

1544  
222

1544  
222

1544  
222

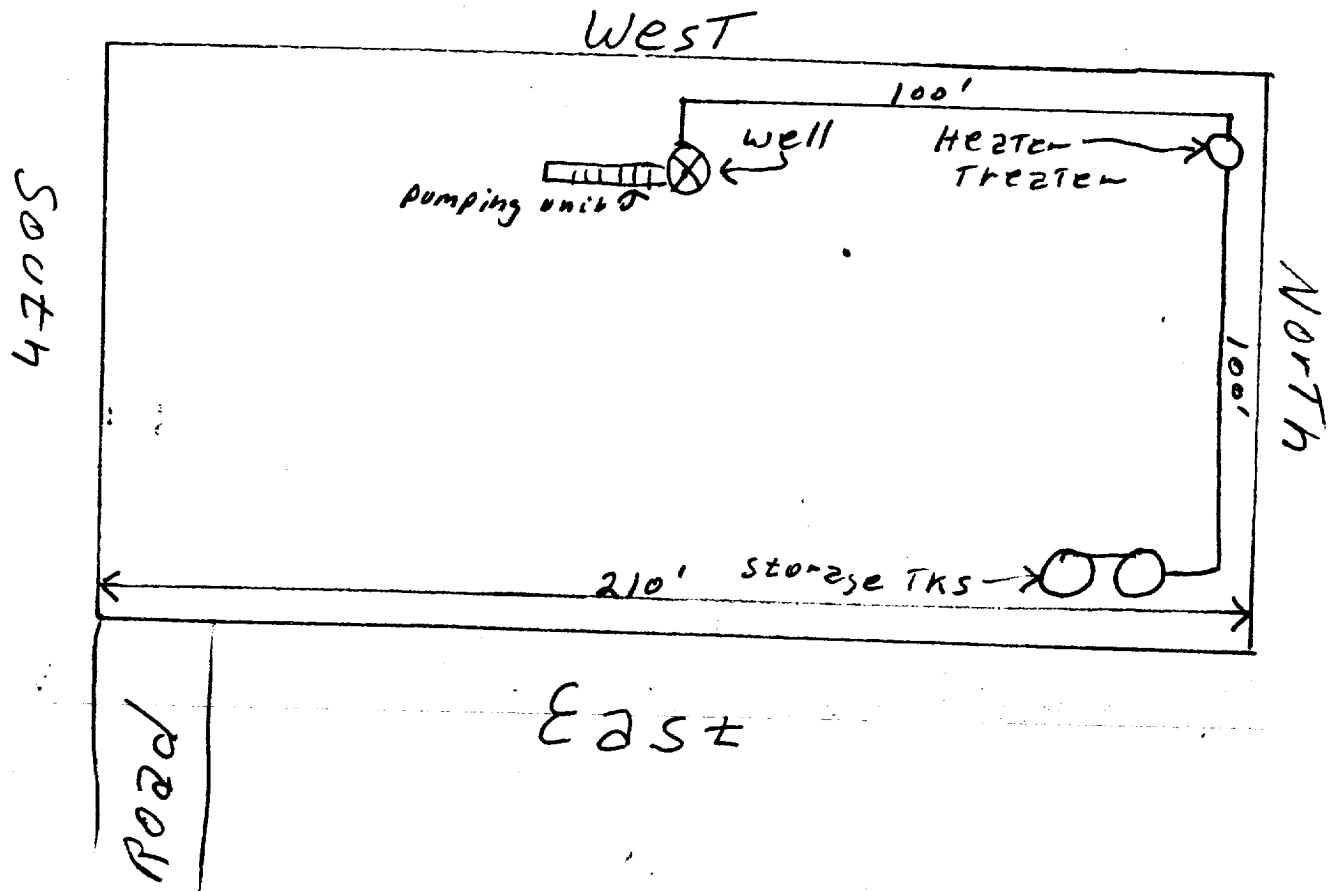
1544  
222

**PROJECT COMPUTATIONS**

NO. \_\_\_\_\_ OF \_\_\_\_\_ SHEETS

DATE \_\_\_\_\_ PROJECT \_\_\_\_\_ JOB NO. \_\_\_\_\_

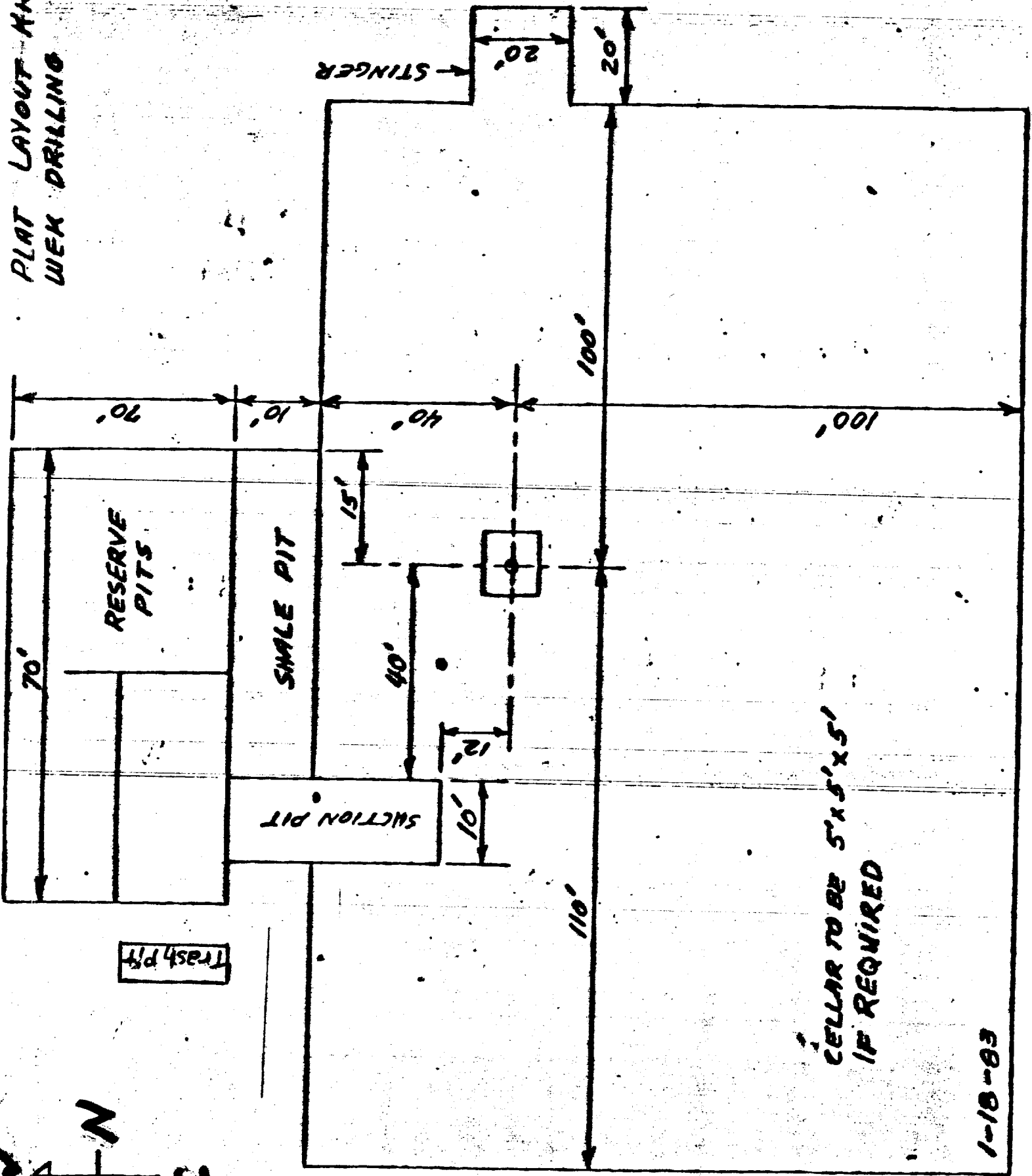
BY \_\_\_\_\_ CHK.: \_\_\_\_\_ SUBJECT \_\_\_\_\_



Proposed tank battery layout  
Grier "B" Federal #2

Exhibit # 3

PLAT LAYOUT AND  
WELL DRILLING



CELLAR TO BE 5'x5'x5'  
IF REQUIRED

1-18-83

Exhibit #4

