

UNITED STATES  
DEPARTMENT OF THE INTERIOR  
GEOLOGICAL SURVEY

## APPLICATION FOR PERMIT TO DRILL, DEEPEN, OR PLUG BACK

## 1a. TYPE OF WORK

DRILL ☐DEEPEN ☐PLUG BACK ☐

## b. TYPE OF WELL

OIL  
WELL ☒GAS  
WELL ☐OTHER ☐SINGLE  
ZONE ☐MULTIPLE  
ZONE ☐

## 2. NAME OF OPERATOR

Ray Westall

## 3. ADDRESS OF OPERATOR

Box 4, Loco Hills, New Mexico 88255

## 4. LOCATION OF WELL (Report location clearly and in accordance with any State requirements.)

At surface

1980 FNL 1980 FEL  
At proposed prod. zone

## 14. DISTANCE IN MILES AND DIRECTION FROM NEAREST TOWN OR POST OFFICE\*

8 miles N of Loco Hills

## 10. DISTANCE FROM PROPOSED\*

LOCATION TO NEAREST  
PROPERTY OR LEASE LINE, FT.  
(Also to nearest drlg. unit line, if any) 1980'

## 16. NO. OF ACRES IN LEASE

80

## 18. DISTANCE FROM PROPOSED LOCATION\*

TO NEAREST WELL, DRILLING, COMPLETED,  
OR APPLIED FOR, ON THIS LEASE, FT. 1 mile

## 19. PROPOSED DEPTH

4100'

17. NO. OF ACRES ASSIGNED  
TO THIS WELL

40

## 20. ROTARY OR CABLE TOOLS

Rotary

## 21. ELEVATIONS (Show whether DF, RT, GR, etc.)

4034

## 22. APPROX. DATE WORK WILL START\*

ASAP

## 23.

## PROPOSED CASING AND CEMENTING PROGRAM

SIZE OF HOLE	SIZE OF CASING	WEIGHT PER FOOT	SETTING DEPTH	QUANTITY OF CEMENT
12 1/4	8 5/8	24#	650'	300 sx <b>CIRCULATE</b>
7 7/8	5 1/2	17#	4100'	800 sx

We propose to drill and test the Lovington and intermediate formations. Approximately 650' of 8 5/8" casing will be set and circulated with cement to shut off gravel & caving. 5 1/2" production casing will be run to T.D. cemented and perforated. Sand frac'd for production.

BOP: A 10" 900 series Shaffer type F double ram BOP will be used in drilling this well.

Mud Program: Fresh water will be used to within 100' of T.D. where the well will be mudded up to clean up the hole for running casing.

IN ABOVE SPACE DESCRIBE PROPOSED PROGRAM: If proposal is to deepen or plug back, give data on present production zone and proposed new productive zone. If proposal is to drill or deepen directionally, give pertinent data on subsurface locations and measured and true vertical depths. Give blowout preventer program, if any.

24.

SIGNED

*Ray Westall*

TITLE Operator

DATE 12-2-83

(This space for Federal or State office use)

PERMIT NO.

APPROVAL DATE

APPROVED BY **Orig. Sgd. Earl R. Cunningham**

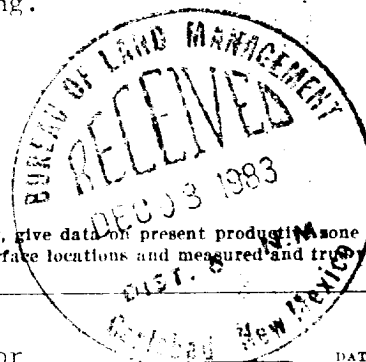
TITLE

District Manager

DATE **DEC 21 1983**

CONDITIONS OF APPROVAL ANY:

APPROVAL SUBJECT TO  
GENERAL REQUIREMENTS AND  
SPECIAL STIPULATIONS  
ATTACHED



*Postcard  
12-1-83  
12-30-83*

**NEW MEXICO OIL CONSERVATION COMMISSION  
WELL LOCATION AND ACREAGE DEDICATION PLAT**

Form C-102  
Supersedes C-128  
Effective 1-1-65

All distances must be from the outer boundaries of the Section.

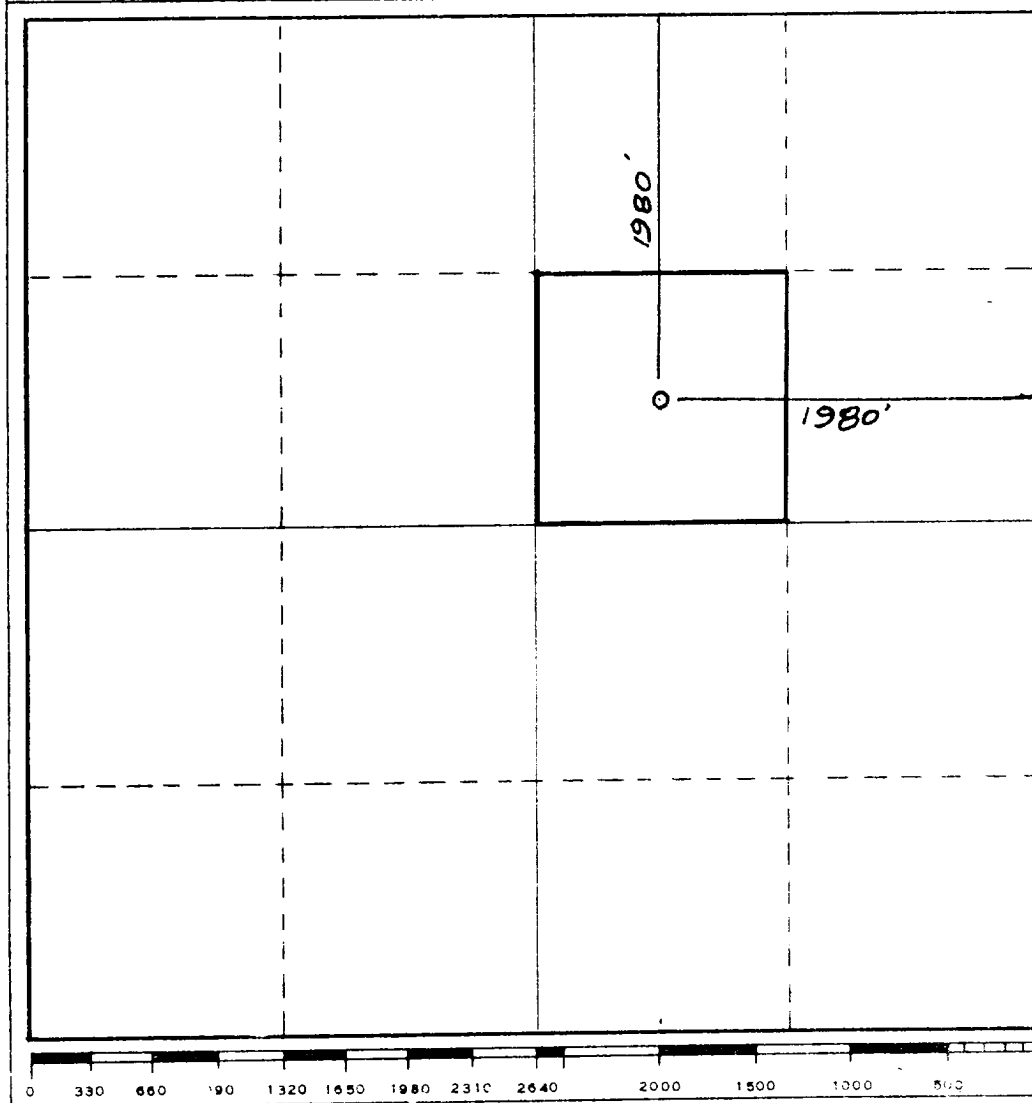
Operator <b>RAY WESTALL</b>			Lease <b>Superior Fed</b>		Well No. <b>1</b>
Unit Letter <b>G</b>	Section <b>21</b>	Township <b>16 South</b>	Range <b>31 East</b>	County <b>Eddy</b>	
Actual Footage Location of Well: <b>1980</b> feet from the <b>North</b> line and <b>1980</b> feet from the <b>East</b> line					
Ground Level Elev. <b>4034.</b>	Producing Formation <b>Lovington</b>		Pool <del>East</del> <b>Square Lake - 6 31-</b>		Dedicated Acreage: <b>40</b> Acres

1. Outline the acreage dedicated to the subject well by colored pencil or hatchure marks on the plat below.
2. If more than one lease is dedicated to the well, outline each and identify the ownership thereof (both as to working interest and royalty).
3. If more than one lease of different ownership is dedicated to the well, have the interests of all owners been consolidated by communitization, unitization, force-pooling, etc?

☐ Yes    ☐ No    If answer is "yes," type of consolidation \_\_\_\_\_

If answer is "no," list the owners and tract descriptions which have actually been consolidated. (Use reverse side of this form if necessary.) \_\_\_\_\_

No allowable will be assigned to the well until all interests have been consolidated (by communitization, unitization, forced-pooling, or otherwise) or until a non-standard unit, eliminating such interests, has been approved by the Commission.



**CERTIFICATION**

I hereby certify that the information contained herein is true and complete to the best of my knowledge and belief.

Name *Ray Westall*  
Position Operator  
Company \_\_\_\_\_

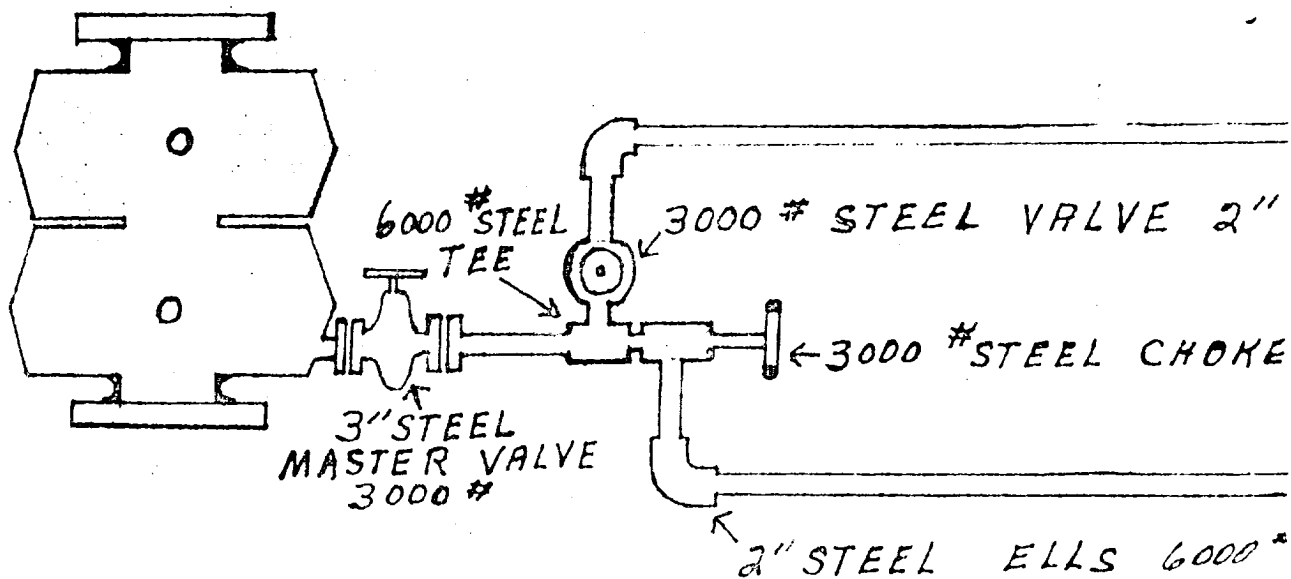
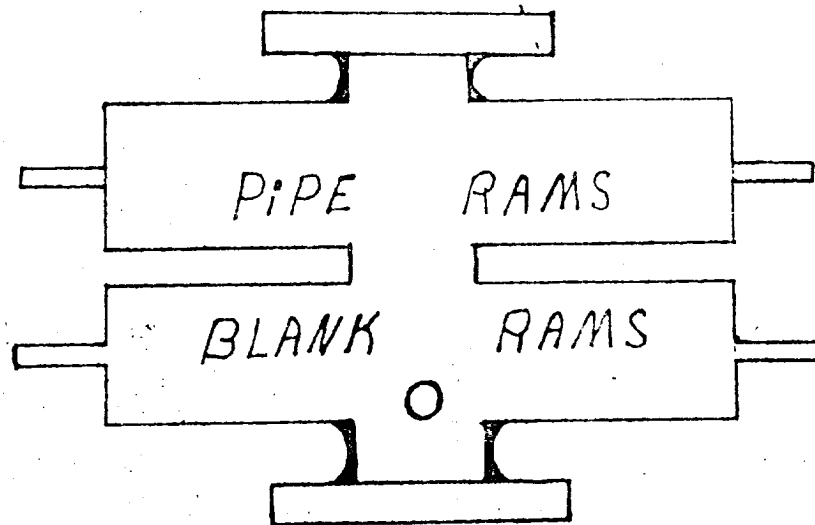
Date  
**12-2-83**

**DAN R. REDDY**  
I hereby certify that the well location shown on this plat was plotted from field notes of actual surveys made by me or under my supervision, and that the same is true and correct to the best of my knowledge and belief.

Date Surveyed  
**November 27, 1983**  
Registered Professional Engineer  
and/or Land Surveyor

*Dan R. Reddy*  
Certificate No.  
**NM PE&LS #5412**

Hydrolic  
CAMERON SS 10" X 900 X 3000 #



SUPERVISOR, OIL AND GAS OPERATIONS:

## DESIGNATION OF OPERATOR

The undersigned is, on the records of the Bureau of Land Management, holder of oil and gas lease

DISTRICT LAND OFFICE: Roswell, New Mexico

SERIAL NO.: USA NM-26689

and hereby designates

NAME: Ray Westall

ADDRESS: P. O. Box 4, Loco Hills, New Mexico 88255

as <sup>it is</sup> ~~the~~ operator and agent, with full authority to act in <sup>its</sup> ~~his~~ behalf in complying with the terms of the lease and regulations applicable thereto and on whom the supervisor or his representative may serve written or oral instructions in securing compliance with the Oil and Gas Operating Regulations with respect to (describe acreage to which this designation is applicable):

T-16-S, R-31-ESection 21: W $\frac{1}{2}$ NE $\frac{1}{4}$ 

Eddy County, New Mexico

It is understood that this designation of operator does not relieve the lessee of responsibility for compliance with the terms of the lease and the Oil and Gas Operating Regulations. It is also understood that this designation of operator does not constitute an assignment of any interest in the lease.

In case of default on the part of the designated operator, the lessee will make full and prompt compliance with all regulations, lease terms, or orders of the Secretary of the Interior or his representative.

The lessee agrees promptly to notify the oil and gas supervisor of any change in the designated operator.

The Superior Oil Company

By John H. Hackabay

(Signature of lessee)

John Hackabay, Attorney-in-Fact

November 29, 1983

P. O. Box 1900, Midland, Texas 79702

(Address)

APPLICATION FOR DRILLING

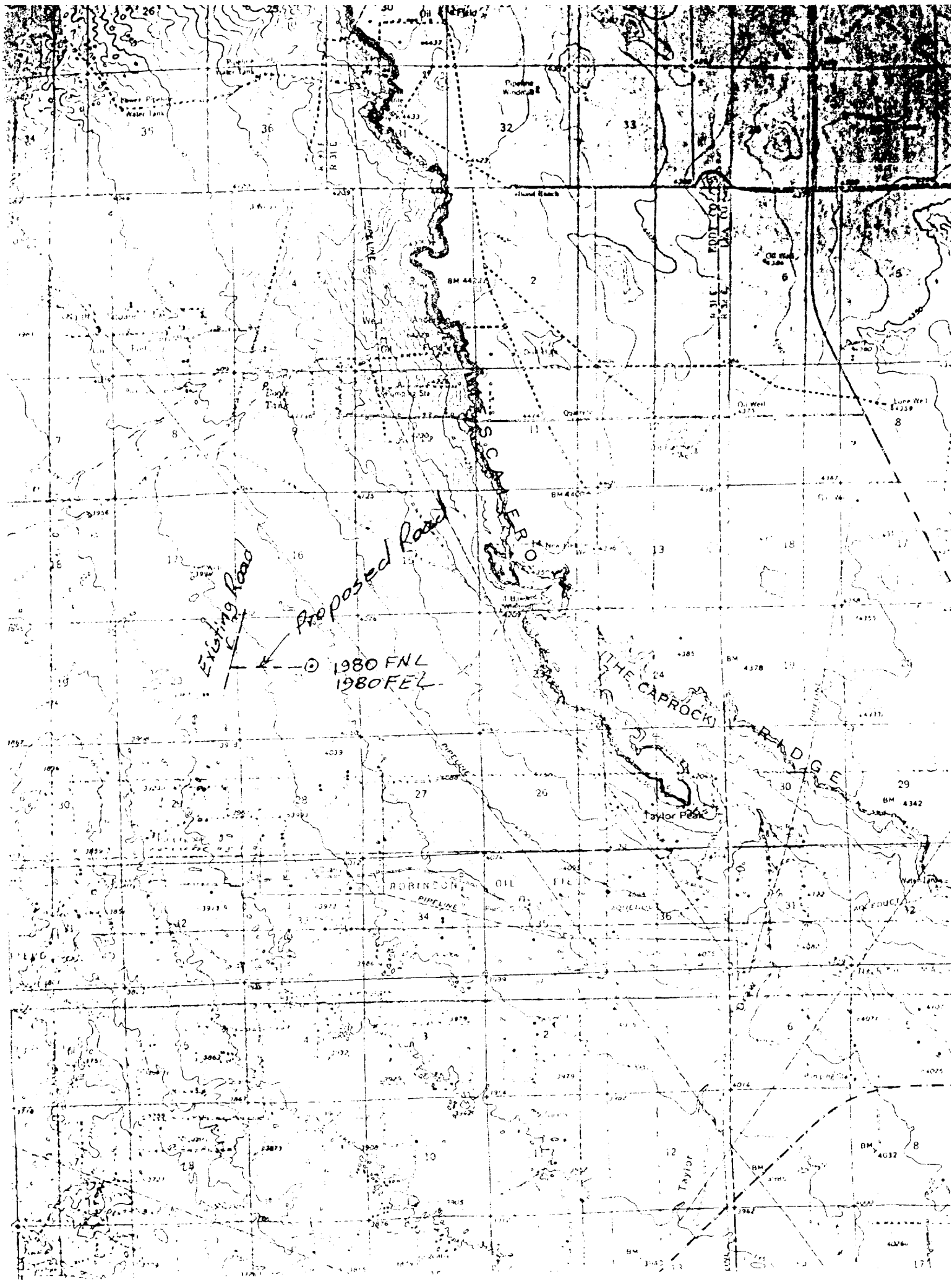
RAY WESTALL  
SUPERIOR FEDERAL #1  
1980 FNL 1980 FEL  
Section 21, Township 16S, Range 31E

In conjunction with the form 9-331C, application for permit to drill subject wells, Ray Westall submits the following ten items of pertinent information in accordance with USGS requirements:

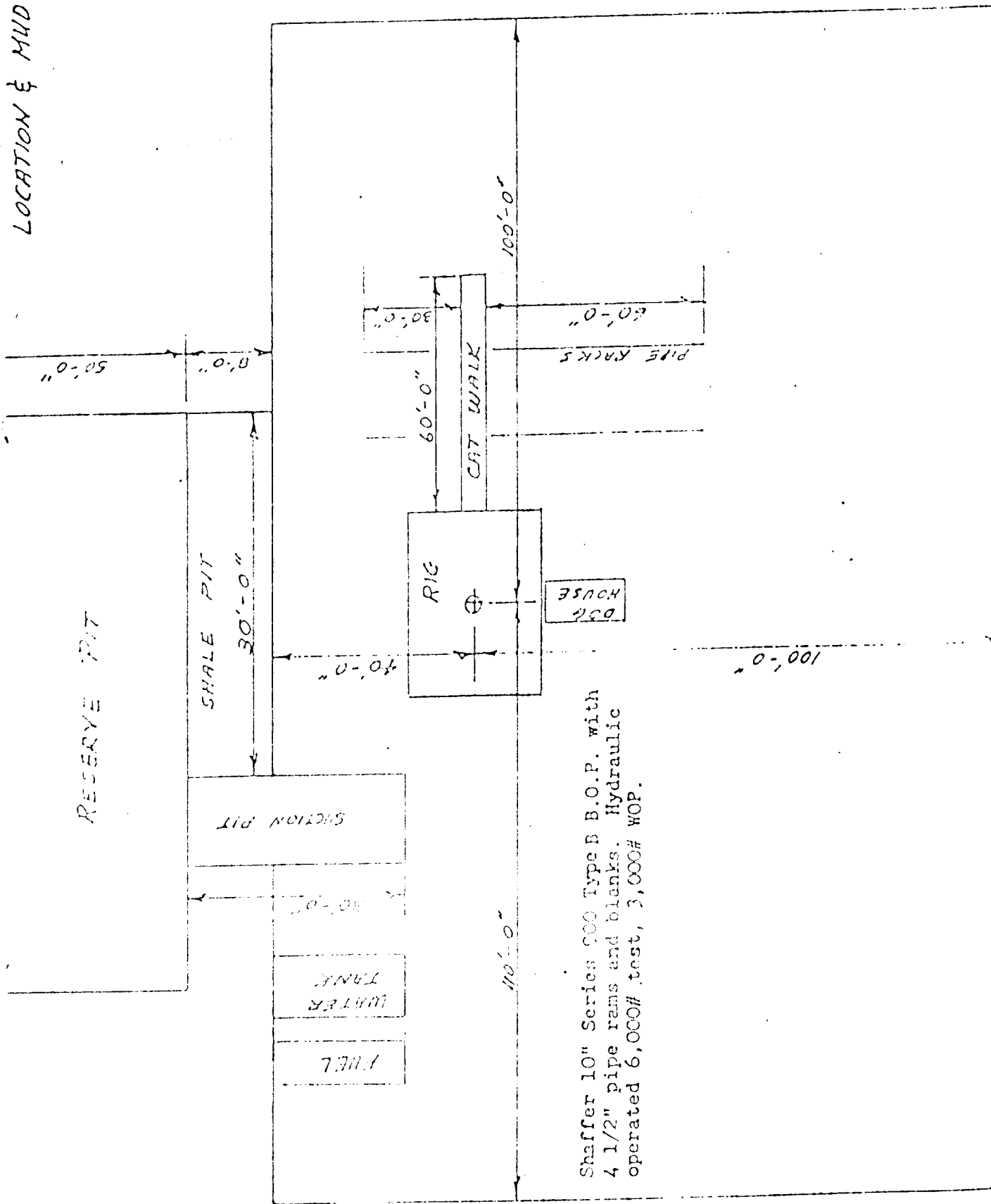
1. The Geological surface formation is quaternary.
2. The estimated tops of geologic markers are as follows:

Yates	2050
7 Rivers	2500
Queen	3050
Grayburg	3500
San Andres	3850
3. The estimated depths at which anticipated water, oil and gas formations are expected to be encountered:

Water	180
Oil and gas zones	listed above in item 2
4. Proposed Casing Program: See form 9-331C
5. Pressure Control Equipment: See form 9-331C and Exhibit E
6. Mud Program: Mud up 100' before TD and circulate 2 hours after TD and pull drill pipe laying down and run casing.
7. Auxiliary Equipment: N/A
8. Testing, Logging and Coring Program: Logging open hole, running gamma ray, and cement bond log.
9. No abnormal pressures or temperatures are anticipated.
10. Anticipated Starting Date: As soon as possible.



# LOCATION & MUD PIT SPECS.



Shaffer 10" Series 900 Type B B.O.P. with  
 4 1/2" pipe rams and blanks. Hydraulic  
 operated 6,000# test, 3,000# WOP.