

NM OIL CONS. COMMISSION

Drawer 50

Artesia, NM UNITED STATES

DEPARTMENT OF THE INTERIOR

GEOLOGICAL SURVEY

RECEIVED B

JUL 06 1984
SUBMIT IN DUPLICATE
(Other instructions on
reverse side)

O. C. D.

ARTESIA, OFFICE

Form approved.
Budget Bureau No. 42-R1425.

5. LEASE DESIGNATION AND SERIAL NO.

NM - 081277

6. IF INDIAN, ALLOTTEE OR TRIBE NAME

7. UNIT AGREEMENT NAME

8. FARM OR LEASE NAME

H. J. Loe Federal

9. WELL NO.

5

10. FIELD AND POOL, OR WILDCAT

Square Lake-Grayburg-SA

11. SEC., T., R., M., OR BLK.
AND SURVEY OR AREA

31 - 16S - 31E

12. COUNTY OR PARISH 13. STATE

Eddy

New Mexico

1a. TYPE OF WORK

DRILL ☒DEEPEN ☐PLUG BACK ☐

b. TYPE OF WELL

OIL
WELL ☒GAS
WELL ☐

OTHER

SINGLE
ZONE ☐MULTIPLE
ZONE ☐

2. NAME OF OPERATOR

Anadarko Production Company ✓

3. ADDRESS OF OPERATOR

P. O. Drawer 130, Artesia, New Mexico 88210

4. LOCATION OF WELL (Report location clearly and in accordance with any State requirements.)*

At surface

660' FSL & 330' FWL

At proposed prod. zone Same

14. DISTANCE IN MILES AND DIRECTION FROM NEAREST TOWN OR POST OFFICE*

Approximately 8 miles Northeast of Loco Hills Townsite

15. DISTANCE FROM PROPOSED*

LOCATION TO NEAREST
PROPERTY OR LEASE LINE, FT.

(Also to nearest drlg. unit line, if any)

330'

16. NO. OF ACRES IN LEASE

31.08

17. NO. OF ACRES ASSIGNED
TO THIS WELL

31.08

18. DISTANCE FROM PROPOSED LOCATION*

TO NEAREST WELL, DRILLING, COMPLETED,
OR APPLIED FOR, ON THIS LEASE, FT.

925'

19. PROPOSED DEPTH

3350'

20. ROTARY OR CABLE TOOLS

Rotary

21. ELEVATIONS (Show whether DF, RT, GR, etc.)

3807.6' GL

22. APPROX. DATE WORK WILL START*

July 15, 1984

23.

PROPOSED CASING AND CEMENTING PROGRAM

SIZE OF HOLE	SIZE OF CASING	WEIGHT PER FOOT	SETTING DEPTH	QUANTITY OF CEMENT
12-1/4"	8-5/8"	24.0#	500'	Approx. 600 - Circulated
7-7/8"	5-1/2"	15.5#	3350'	Approx. 1000 - Circulated

1. Rig up Rotary Tools.
2. Drill 12-1/4" hole to approx. 500'; set & circulate or ready-mix cement to surface on 8-5/8" casing. Install & test Series 900 Double Ram Hydraulic Blowout Preventor.
3. Drill 7-7/8" hole to T D (approx. 3350'); run Open Hole Logs.
4. Set & circulate cement on 5-1/2" casing from T D to surface.
5. Perforate, acidize and fracture treat.
6. Run 2-3/8" tubing, rods and bottomhole pump; install pumping equipment and place well on production.

IN ABOVE SPACE DESCRIBE PROPOSED PROGRAM: If proposal is to deepen or plug back, give data on present productive zone and proposed new productive zone. If proposal is to drill or deepen directionally, give pertinent data on subsurface locations and measured and true vertical depths. Give blowout preventer program, if any.

24.

SIGNED

Truman D. Jones

TITLE

Field Foreman

DATE

June 26, 1984

(This space for Federal or State office use)

PERMIT NO.

APPROVAL DATE

APPROVED BY

TITLE

AREA MANAGER
CARLSBAD RESOURCE AREA

DATE

7-5-84

CONDITIONS OF APPROVAL, IF ANY

Post. App
JD-12th BR
7-13-84APPROVAL SUBJECT TO
GENERAL REQUIREMENTS AND
SPECIAL STIPULATIONS
ATTACHED

*See Instructions On Reverse Side

NEW MEXICO OIL CONSERVATION COMMISSION
WELL LOCATION AND ACREAGE DEDICATION PLAT

Form C-102
Supersedes C-128
Effective 1-1-65

All distances must be from the outer boundaries of the Section.

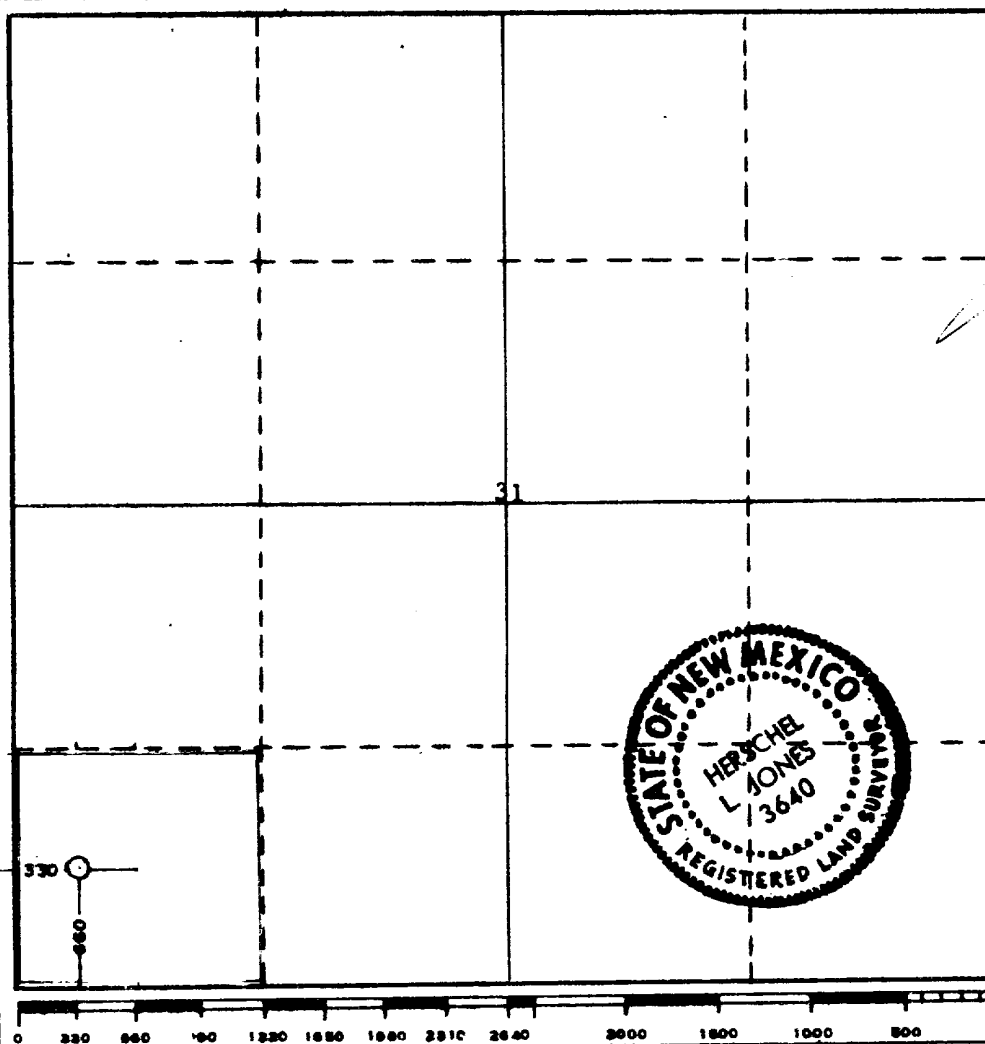
Operator ANADARKO PRODUCTION COMPANY		Lease H. J. LOE Federal		Well No. 5
Unit Letter "M"	Section 31	Township 16 South	Range 31 East	County Eddy
Actual Footage Location of Well: 660 feet from the South line and 330 feet from the West line				
Ground Level Elev. 3807.6	Producing Formation Grayburg-San Andres	Pool Square Lake Grayburg-San Andres	Dedicated Acreage: 31.08 Acres	

1. Outline the acreage dedicated to the subject well by colored pencil or hatchure marks on the plat below.
2. If more than one lease is dedicated to the well, outline each and identify the ownership thereof (both as to working interest and royalty).
3. If more than one lease of different ownership is dedicated to the well, have the interests of all owners been consolidated by communitization, unitization, force-pooling, etc?

☐ Yes ☐ No If answer is "yes," type of consolidation _____

If answer is "no," list the owners and tract descriptions which have actually been consolidated. (Use reverse side of this form if necessary.) _____

No allowable will be assigned to the well until all interests have been consolidated (by communitization, unitization, forced-pooling, or otherwise) or until a non-standard unit, eliminating such interests, has been approved by the Commission.



CERTIFICATION

I hereby certify that the information contained herein is true and complete to the best of my knowledge and belief.

Name *Jerry E. Buckles*

Jerry E. Buckles

Position

Area Supervisor

Company

Anadarko Production Company

Date

June 26, 1984

I hereby certify that the well location shown on this plat was plotted from field notes of actual surveys made by me or under my supervision, and that the same is true and correct to the best of my knowledge and belief.

Date Surveyed

June 25, 1984

Registered Professional Engineer and/or Land Surveyor

Certificate No. *3640*

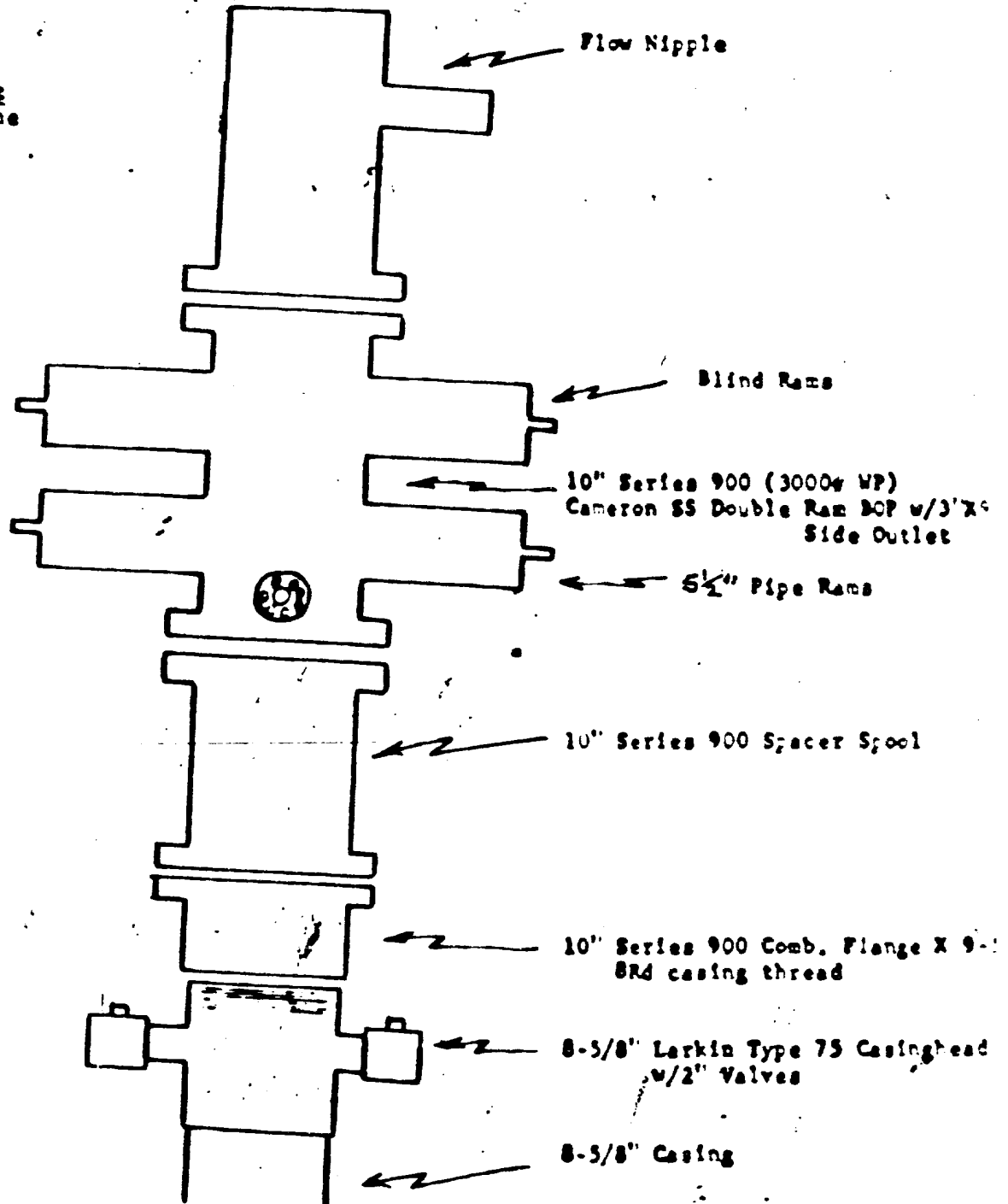
3640

Anadarko
PRODUCTION COMPANY

A
Portland
Eastern
Company

P. O. Box 87 • Locust Hill, New Mexico 88296 • 505 877 2411

Closing Unit
4 Stage Payne



B O P Schematic

This data sheet is provided in reference to the attached 'Application for Permit to Drill: Anadarko's H. J. Loe Federal #5.

1. Location: 660' FSL & 330' FWL Sec. 31, T16S, R31E, Eddy County, New Mexico

2. Elevation: 3807.6' GL

3. Geological Name of Surface Formation: Triassic Rock

4. Type of Drilling Tools to be utilized: Rotary Tools

5. Proposed Drilling Depth: 3350'

6. Tops of Important Geological Markers:

T. Salt - -	520'	7-Rivers - -	1640'
B. Salt - -	1400'	Queen - - -	2180'
Tansill - -	1400'	Grayburg - -	2845'
Yates - - -	1520'	San Andres -	3155'

7. Estimated Depth of Anticipated Water, Oil or Gas:

Oil: - - - 3080' - 3300'

8. Casing Program:

8-5/8" - 24.0# K-55 or J-55 - New
5-1/2" - 15.5# K-55 or J-55 - New

9. Setting Depth of Casing:

8-5/8" - 500' - approx. 600 sx cement
5-1/2" - 3350' - approx. 1000 sx cement

10. Specifications for Pressure Control Equipment: (See attached Schematic)

This rig will have a Series 900 BOP with 5½" Blind Rams, kill line and choke manifold; Koomey Hydraulic controls & accumulator with remote controls. When nipping up, test BOP and Choke to 1000 psi. Operate BOP equipment once a day, or as directed by Company Representative.

11. Mud Program:

Spud and drill with fresh water to a depth of approx. 500'; drill out from under surface casing with 10# brine native mud to within 50' of T D while maintaining a PH of 10. At this point paper & gel will be used to clean hole prior to running O. H. Logs.

12. Testing, Logging & Coring Program:

- a. Testing: No drill stem tests will be conducted.
- b. Coring: No coring is planned but there is a possibility the well will be cored.
- c. Logging: Open Hole Logs will be run prior to running 5½" casing.

13. Potential Hazards:

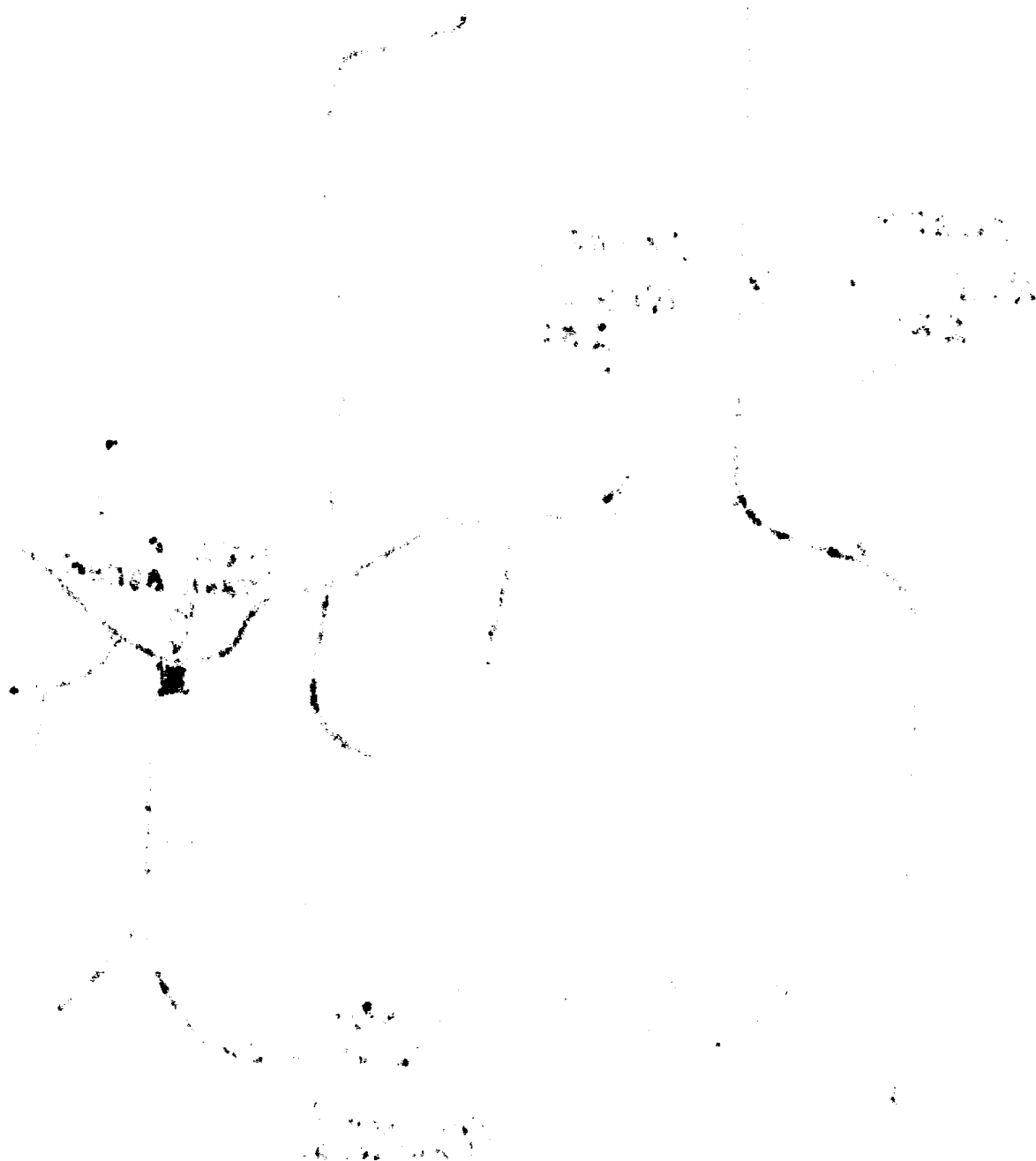
None are expected. Above described BOP should take care of any blowout. Numerous wells have been drilled in this area without problems.

14. Anticipated Starting Date & Duration:

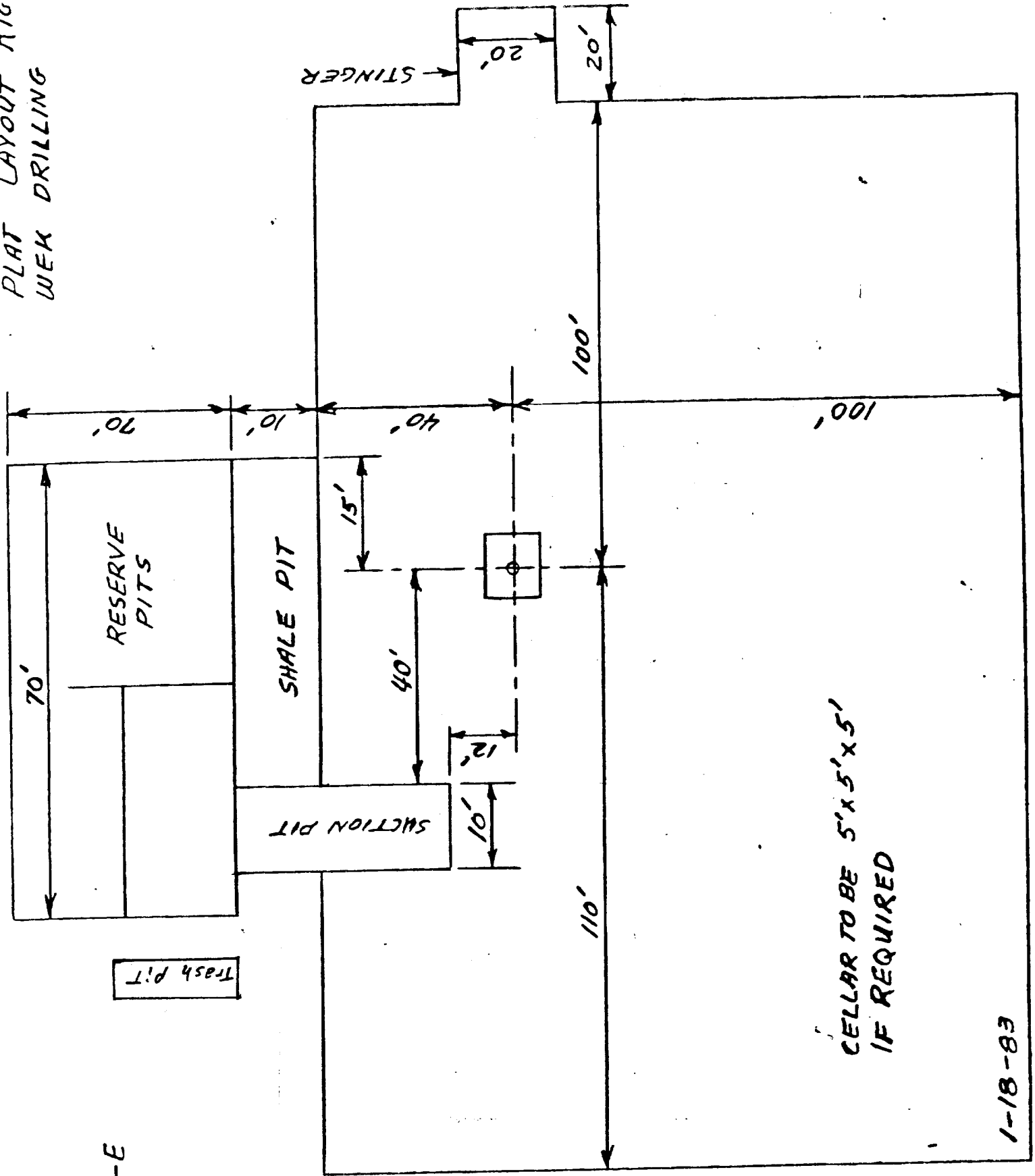
Plans are to begin drilling operations about July 15, 1984; approx. 6 days will be required to drill the well and 2 weeks for completion.

15. Other Facets:

None.



PLAT LAYOUT RIG
WEK DRILLING



CELLAR TO BE 5'x5'x5'
IF REQUIRED

1-18-83

Exhibit #4

