

UNITED STATES
DEPARTMENT OF THE INTERIOR
GEOLOGICAL SURVEY

RECEIVED BY
SUBMIT IN TRI STATE
(Other instructions on
reverse side)

OCT 12 1984

O. C. D.

Form approved.
Budget Bureau No. 42-B1425.

30-015-25059

5. LEASE DESIGNATION AND SERIAL NO.

LC 058594

6. IF INDIAN, ALLOTTEE OR TRIBE NAME

7. UNIT AGREEMENT NAME

8. FARM OR LEASE NAME

RED TWELVE FEDERAL

9. WELL NO.

2

10. FIELD AND POOL, OR WILDCAT

CAVE GB/SA

11. SEC., T., R., M., OR BLK.
AND SURVEY OR AREA

Sec. 33 T16S-R29E

12. COUNTY OR PARISH

Eddy

13. STATE

NM

1a. TYPE OF WORK

DRILL ☒

DEEPEN ☐

PLUG BACK ☐

b. TYPE OF WELL

OIL
WELL ☒

GAS
WELL ☐

OTHER

SINGLE
ZONE ☐

MULTIPLE
ZONE ☐

2. NAME OF OPERATOR

DIAMOND BACK PETROLEUM INC
J.E.M. Resources Inc

3. ADDRESS OF OPERATOR

P.O. Box 2938, Ruidoso NM 88345

4. LOCATION OF WELL (Report location clearly and in accordance with any State requirements.)*

At surface

330 FSL & 990 FSL

At proposed prod. zone

same

14. DISTANCE IN MILES AND DIRECTION FROM NEAREST TOWN OR POST OFFICE*

6 miles northwest of Loco Hills NM

15. DISTANCE FROM PROPOSED*

LOCATION TO NEAREST
PROPERTY OR LEASE LINE, FT.
(Also to nearest drlg. unit line, if any.)

330

16. NO. OF ACRES IN LEASE

80

17. NO. OF ACRES ASSIGNED
TO THIS WELL

40

18. DISTANCE FROM PROPOSED LOCATION*

TO NEAREST WELL, DRILLING, COMPLETED,
OR APPLIED FOR, ON THIS LEASE, FT.

990

19. PROPOSED DEPTH

3500

20. ROTARY OR CABLE TOOLS

Rotary

21. ELEVATIONS (Show whether DF, RT, GR, etc.)

3599 Gr.

22. APPROX. DATE WORK WILL START*

ASAP

23. PROPOSED CASING AND CEMENTING PROGRAM

SIZE OF HOLE	SIZE OF CASING	WEIGHT PER FOOT	SETTING DEPTH	QUANTITY OF CEMENT
12 1/4	8 5/8	24	+350	250 sxs circulated
7 7/8	5 1/2	15.5	3500	650 sxs circulated

Mud Program: 0-350' Fresh water and spud mud
350-3500 Brine water and salt gel

BOP: At 350' install and test to 3000# The regan(Torus)
Blowout-preventer See Exhibit "D"

IN ABOVE SPACE DESCRIBE PROPOSED PROGRAM: If proposal is to deepen or plug back, give data on present productive zone and proposed new productive zone. If proposal is to drill or deepen directionally, give pertinent data on subsurface locations and measured and true vertical depths. Give blowout preventer program, if any.

24.

SIGNED

TITLE Consulting Geologist

DATE 9/9/84

(This space for Federal or State office use)

PERMIT NO.

APPROVAL DATE

CARLSBAD RESOURCE AREA

APPROVED BY

TITLE

DATE

CONDITIONS OF APPROVAL, IF ANY:

APPROVAL SUBJECT TO
GENERAL REQUIREMENTS AND
SPECIAL STIPULATIONS
ATTACHED

Revised ID1
HPS-M-L
10-19-84

STATE OF NEW MEXICO
ENERGY AND MINERALS DEPARTMENT

P. O. BOX 2088
SANTA FE, NEW MEXICO 87

Form C-102
Revised 10-1-

All distances must be from the outer boundaries of the Section.

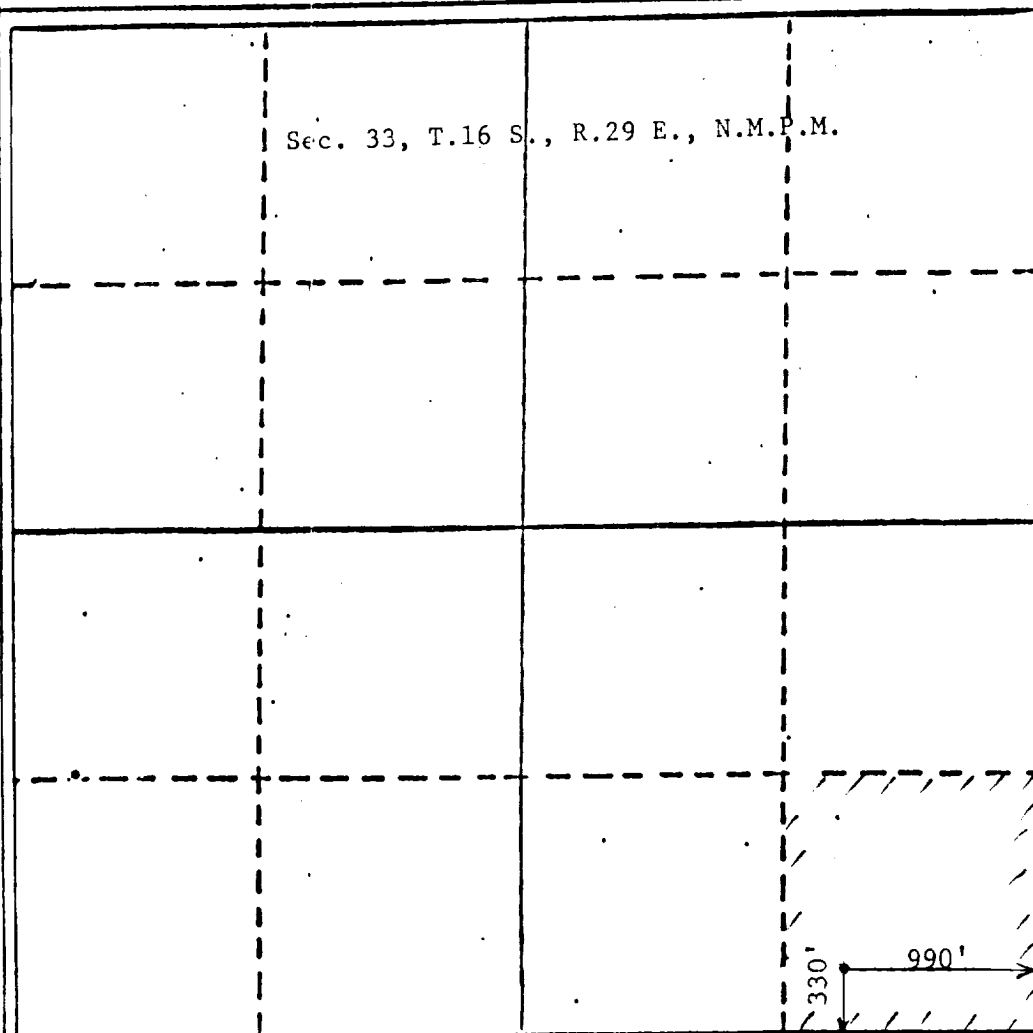
Operator J.E.M. Resources		Lease Red Twelve Federal		Well No. 2
Unit Letter P	Section 33	Township 16 South	Range 29 East	County Eddy
Actual Well Location of Well				
330 feet from the South line and		990 feet from the East line		
Ground Level Elev. 3599	Producing Formation San Andres	Pool Cave GB/SA	Dedicated Acreage 40	

1. Outline the acreage dedicated to the subject well by colored pencil or hatchure marks on the plat below.
2. If more than one lease is dedicated to the well, outline each and identify the ownership thereof (both as to working interest and royalty).
3. If more than one lease of different ownership is dedicated to the well, have the interests of all owners been consolidated by communitization, unitization, force-pooling, etc?

☐ Yes ☐ No If answer is "yes," type of consolidation _____

If answer is "no," list the owners and tract descriptions which have actually been consolidated. (Use reverse side of this form if necessary.) _____

No allowable will be assigned to the well until all interests have been consolidated (by communitization, unitization, forced-pooling, or otherwise) or until a non-standard unit, eliminating such interests, has been approved by the Division.



CERTIFICATION

I hereby certify that the information contained herein is true and complete to the best of my knowledge and belief.

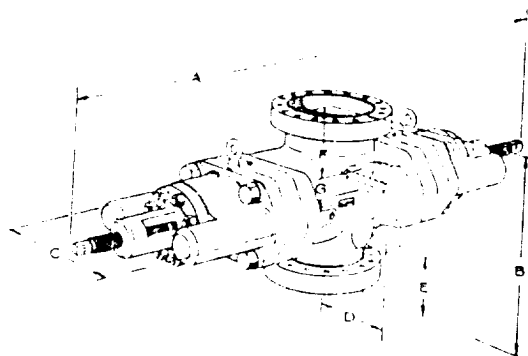
Name
Randall L. Harris
Position
Consulting Geologist
Company
J.E.M. Resources Inc
Date
9/9/84

I hereby certify that the well location shown on this plat was plotted from field notes of actual surveys made by me or under my supervision, and that the same is true and correct to the best of my knowledge and belief.

Date Surveyed
August 20, 1984
Surveyed by
John D. Jaques
Certified Professional Engineer, P.E. & L.S.

CAMERON IRON WORKS, INC. HOUSTON, TEXAS

U BLOWOUT PREVENTER ENGINEERING DATA



Single Open Face Flanged U Blowout Preventer

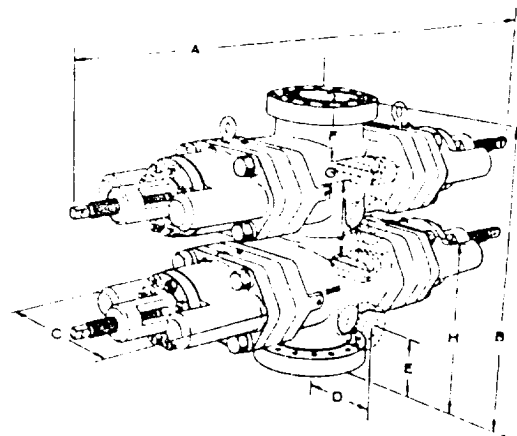
Side Outlets: to 4" size (7-1/16" on 25-3/4 preventers) can be provided beneath each set of rams, on either or both sides of U preventers. Side outlet flanges are open face and have the same pressure rating as the vertical ram flanges. Valve removal preparations can be provided. To obtain a quotation, line number and size of outlets should be specified.

Flanges conform to API Standard 6A. Type 6BX flanges are standard for 10,000 psi, 15,000 psi, and 20,000 psi working pressures and for 5000 psi working pressures for 13-5/8" and larger core preventers.

Although most preventers have open face flanges or Cameron clamp hubs, preventers with studded flanges can be furnished.

Sizes and Dimensions are in inches. The over-all length "A" given in the tables does not include the optional wedgelocks. No spacers between rams are included in the table of dimensions of double ram models. Preventers with spacers to clear tool joints can be obtained on special order. For information on preventers with spacers, or sizes not listed, consult your Cameron representative.

Hydraulic Control Connections to operate rams and bonnets are 1" NPT. There are two connections for each set of rams. Hydraulic ram lock connections are 1/2" NPT.



Double Open Face Flanged U Blowout Preventer

Engineering Data Designations. See Charts on Following Page

- A-1 Over-all length, bonnets closed, locking screws locked
- A-2 Over-all length, ram change, bonnets opened, locking screws unlocked
- B-1 Over-all height flanged
- B-2 As above, with Cameron clamp hubs
- C Over-all width without side outlets (max. width)
- D Centerline of preventer to outlet flange or hub face. Distance is variable.
- E-1 Centerline of side outlet (outlet below lower rams in double model) to bottom flange face
- E-2 As above, to bottom hub face
- F-1 Top of upper ram to top flange face
- F-2 As above, to top hub face
- G Ram height
- H-1 Centerline of side outlet between rams to bottom flange face
- H-2 As above, to bottom hub face
- J Top of lower ram to bottom of upper ram

11" 3000# - DOUBLE

APPLICATION FOR DRILLING

J.E.M. RESOURCES, INC.
Red Twelve Federal, Well No. 2
330 FSL & 990 FWL
Sec. 33-T16S-R29E
Eddy County, New Mexico

In conjunction with Form 9-331c, Application for Permit to Drill subject well, JEM Resources Inc. submits the following items of pertinent information in accordance with MMS/BLM requirements:

1. The geologic surface formation is recent Permian with quaternary alluvium and other surficial deposits.

2. The estimated tops of geologic markers are as follows:

Top salt	350	Queen	1660
Base salt	650	Grayburg	2170
Yates	870	San Andres	2520
Seven Rivers	1060		

3. The estimated depth at which anticipated water, oil or gas formations are expected to be encountered:

oil: Grayburg at 2170, San Andres at 2520-3500
Gas: None expected;
Water: None expected

4. Proposed Casing Program: See Form 9-331c.

5. Pressure control equipment: See form 9-331c, and Exhibit D.

6. Mud program: See Form 9-331c.

7. Auxiliary equipment: Blowout preventer, gas detector, kelly cock,

8. Testing, Logging and Coring Program:

DST: None Planned

Coring: None planned

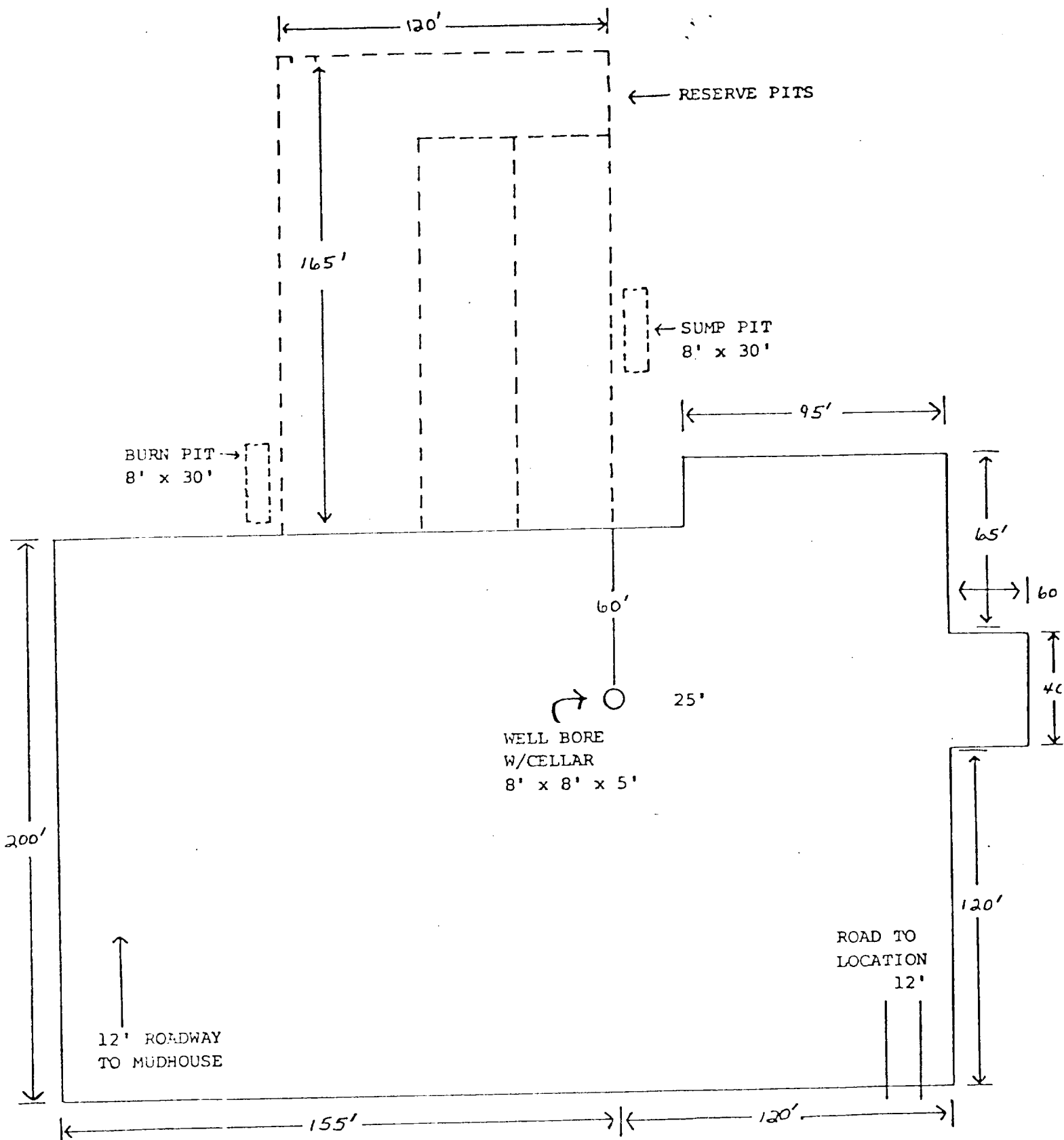
Logging: GR. Neutron T.D. to Surface, DLL T.D. to int. csng.

9. No abnormal pressures or temperatures are anticipated. In the event abnormal pressures are encountered the proposed mud program will be modified to increase the mud weight.

10. Anticipated starting date: 9/22/84
Anticipated completion of drilling operations: Approximately 7 days.

ARM RESOURCES INC
REV TWELVE FEDERAL





SCALE: 1 inch = 50 feet

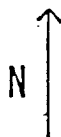


EXHIBIT "C"