

RECEIVED BY

JAN 2 - 1985

O.C.D.  
ARTESIA OFFICE

COMMISSION

Bureau 80

Artesia, NM 88210

UNITED STATES  
DEPARTMENT OF THE INTERIOR  
GEOLOGICAL SURVEY

SUBMIT IN APPLICATION\*

(Other instructions on  
reverse side)Form approved.  
Budget Bureau No. 42-B1425.30-015-25153  
5. LEASE DESIGNATION AND SERIAL NO.

NM-38475

6. IF INDIAN, ALLOTTEE OR TRIBE NAME

7. UNIT AGREEMENT NAME

8. FARM OR LEASE NAME

Hedgehog "ABM" Federal

9. WELL NO.

1

10. FIELD AND POOL, OR WILDCAT

wildcat Yeso

11. SEC., T., R., M., OR BLK.  
AND SURVEY OR AREA

Section 26-T16S-R31E

12. COUNTY OR PARISH 13. STATE

Eddy

N.M.

14. TYPE OF WORK  
DRILL ☒ DEEPEN ☐ PLUG BACK ☐

b. TYPE OF WELL

OIL  
WELL ☒GAS  
WELL ☐

OTHER

SINGLE  
ZONE ☐MULTIPLE  
ZONE ☐

2. NAME OF OPERATOR

YATES PETROLEUM CORPORATION

3. ADDRESS OF OPERATOR

207 South 4th Street, Artesia, New Mexico 88210

4. LOCATION OF WELL (Report location clearly and in accordance with any State requirements.)  
At surface

1650' FSL and 2310' FEL

At proposed prod. zone

same

14. DISTANCE IN MILES AND DIRECTION FROM NEAREST TOWN OR POST OFFICE

15 miles east of Loco Hills, New Mexico

15. DISTANCE FROM PROPOSED\*

LOCATION TO NEAREST  
PROPERTY OR LEASE LINE, FT.  
(Also to nearest drlg. unit line, if any)

1650'

16. NO. OF ACRES IN LEASE

480

17. NO. OF ACRES ASSIGNED  
TO THIS WELL

40

18. DISTANCE FROM PROPOSED LOCATION\*  
TO NEAREST WELL, DRILLING, COMPLETED,  
OR APPLIED FOR, ON THIS LEASE, FT.

19. PROPOSED DEPTH

5600'

20. ROTARY OR CABLE TOOLS

Rotary

21. ELEVATIONS (Show whether DF, RT, GR, etc.)

4131.5' GL

22. APPROX. DATE WORK WILL START\*

ASAP

23. PROPOSED CASING AND CEMENTING PROGRAM

SIZE OF HOLE	SIZE OF CASING	WEIGHT PER FOOT	SETTING DEPTH	QUANTITY OF CEMENT
17 1/2"	13 3/8"	48# H-50	500'	Circ.
12 1/4"	8 5/8"	24# K-55	1950'	Circ.
7"	5 1/2"	15.5# K-55	5600'	350 sx

We propose to drill a Yeso test. Approximately 500' of surface casing will be run to shut off gravel and caving. If needed, Intermediate casing will be run and set to protect the fresh water zones. If commercial production is encountered, a production string will be run, perforated and stimulated as needed for production.

MUD PROGRAM: FW gel/LCM to 500', Brine &amp; LCM to TD.

BOP PROGRAM: BOP's will be installed and tested daily.

IN ABOVE SPACE DESCRIBE PROPOSED PROGRAM: If proposal is to deepen or plug back, give data on present productive zone and proposed new productive zone. If proposal is to drill or deepen directionally, give pertinent data on subsurface locations and measured and true vertical depths. Give blowout preventer program, if any.

24. SIGNED Cy Cowan TITLE Regulatory Agent DATE 12/18/84

(This space for Federal or State office use)

PERMIT NO.

APPROVAL DATE

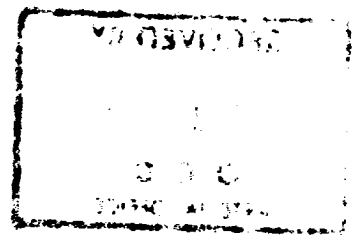
APPROVED BY

TITLE

DATE 12/31/84

CONDITIONS OF APPROVAL, IF ANY:

APPROVAL SUBJECT TO  
GENERAL REQUIREMENTS AND  
SPECIAL STIPULATIONS  
ATTACHED



**NEW MEXICO OIL CONSERVATION COMMISSION  
WELL LOCATION AND ACREAGE DEDICATION PLAT**

Form C-102  
Supersedes C-128  
Effective 1-1-65

All distances must be from the outer boundaries of the Section.

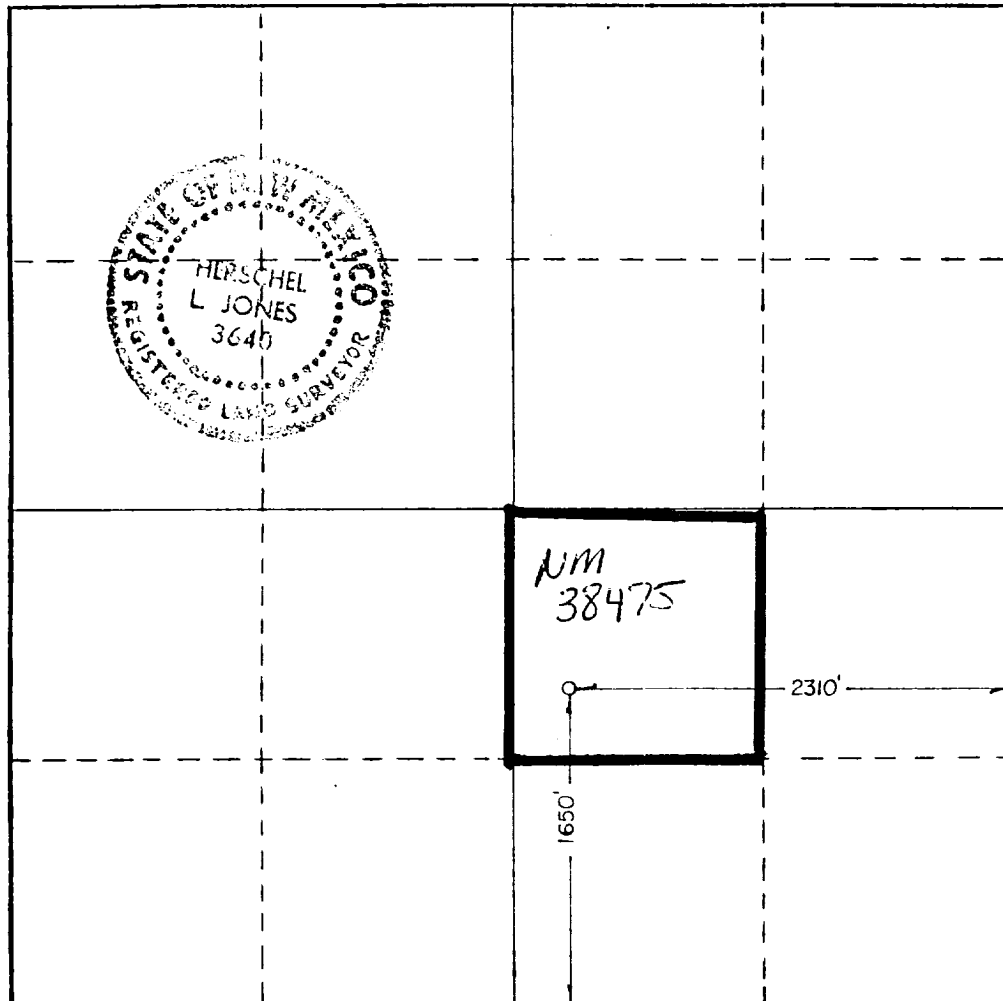
Operator <b>YATES PETROLEUM CORPORATION</b>			Lease <b>HEDGEHOG "ABM" FEDERAL</b>		Well No. <b>1</b>
Unit Letter <b>J</b>	Section <b>26</b>	Township <b>16 South</b>	Range <b>31 East</b>	County <b>Eddy</b>	
Actual Footage Location of Well: <b>1650</b> feet from the <b>South</b> line and <b>2310</b> feet from the <b>East</b> line					
Ground Level Elev. <b>4131.5</b>	Producing Formation <b>YESO</b>		Pool <b>Undesignated</b>		Dedicated Acreage: <b>40</b> Acres

1. Outline the acreage dedicated to the subject well by colored pencil or hatchure marks on the plat below.
2. If more than one lease is dedicated to the well, outline each and identify the ownership thereof (both as to working interest and royalty).
3. If more than one lease of different ownership is dedicated to the well, have the interests of all owners been consolidated by communitization, unitization, force-pooling, etc?

☐ Yes ☒ No If answer is "yes," type of consolidation \_\_\_\_\_

If answer is "no," list the owners and tract descriptions which have actually been consolidated. (Use reverse side of this form if necessary.) \_\_\_\_\_

No allowable will be assigned to the well until all interests have been consolidated (by communitization, unitization, forced-pooling, or otherwise) or until a non-standard unit, eliminating such interests, has been approved by the Commission.



**CERTIFICATION**

*I hereby certify that the information contained herein is true and complete to the best of my knowledge and belief.*

*Cy Cowan*

Name <b>Cy Cowan</b>
Position <b>Regulatory Agent</b>
Company <b>Yates Petroleum Corporation</b>
Date <b>12/18/84</b>

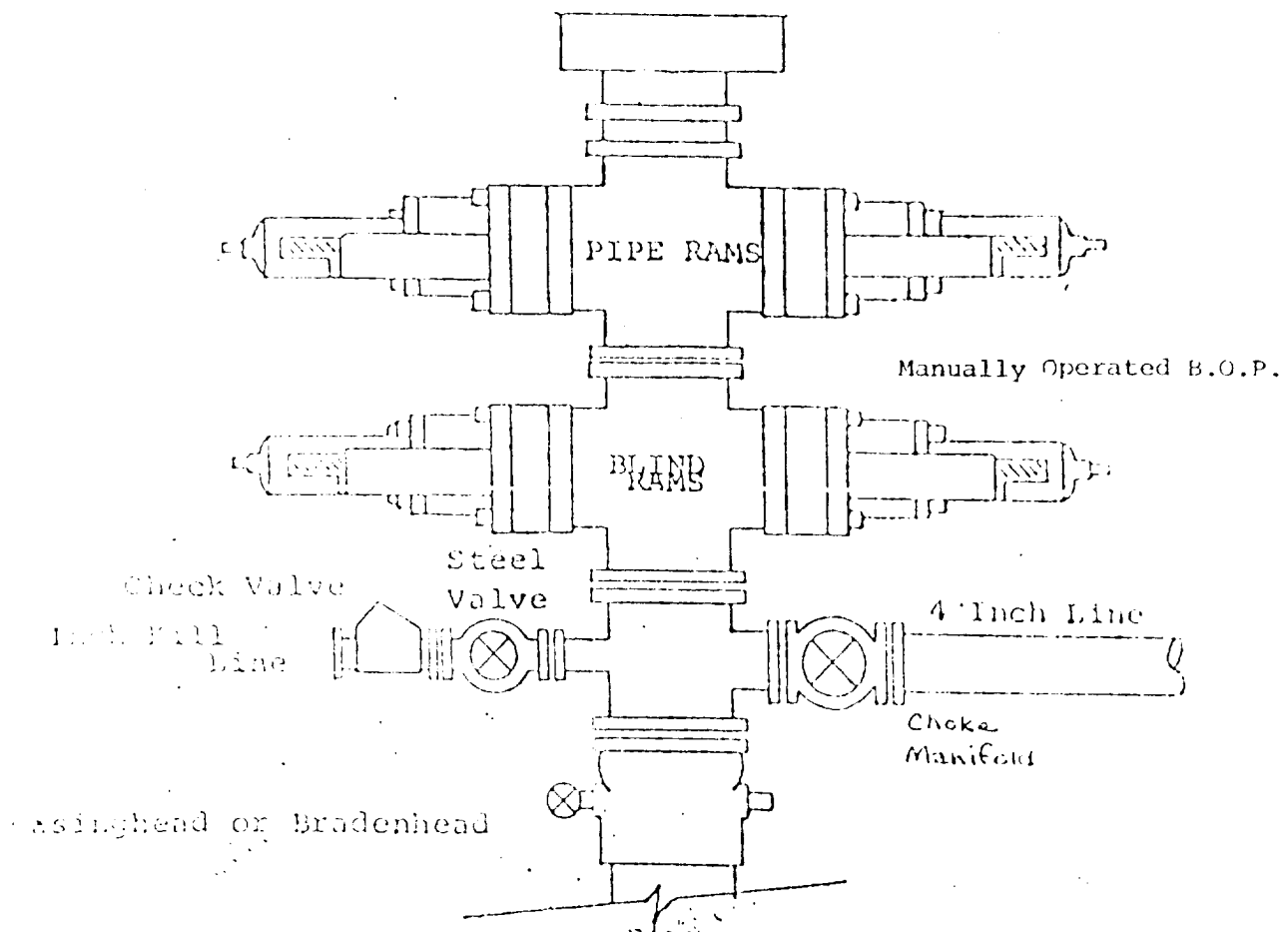
*I hereby certify that the well location shown on this plat was plotted from field notes of actual surveys made by me or under my supervision, and that the same is true and correct to the best of my knowledge and belief.*

Date Surveyed <b>12/11/84</b>
Registered Professional Engineer and/or Land Surveyor <i>Herschel L Jones</i>
Certificate No. <b>3640</b>

# EXHIBIT B

## BDP DIAGRAM

RATED 3000<sup>#</sup>



YATES PETROLEUM CORPORATION  
Hedgehog "ABM" Federal #1  
1650' FSL and 2310' FEL  
Section 26-T16S-R31E  
Eddy County, New Mexico

In conjunction with Form 9-331C, Application for Permit to Drill subject well, Yates Petroleum Company submits the following ten items of pertinent information in accordance with BLM requirements.

1. The geologic surface formation is sandy alluvium.
2. The estimated tops of geologic markers are as follows:

Anhydrite	770'	San Andres	3820'
Base of salt	1950'	Glorieta	5260'
Penrose	3315'	TD	5600'
Primer	3760'		

3. The estimated depths at which anticipated water, oil or gas formations are expected to be encountered:

Water: Approximately 200-240'

Oil or Gas: 3870'

4. Proposed Casing Program: See Form 9-331C.
5. Pressure Control Equipment: See Form 9-331C.
6. Mud Program: See Form 9-331C.
7. Auxiliary Equipment: Kelly Cock; pit level indicators and flow sensor equipment; sub with full-opening valve on floor, drill pipe connection.
8. Testing, Logging and Coring Program:  
  
Samples: 10' samples caught out from under surface casing to TD.  
DST's: As warranted.  
Logging: CNL/LDT - TD to casing w/GR to surface DLL w/RxO to 3000'.  
Mud Logging: One man unit on out from under surface casing to 3000'.  
  
9. No abnormal pressures or temperatures are anticipated.
10. Anticipated starting date: As soon as possible after approval.



# YATES PETROLEUM CORP.

## Exhibit C

Reserve Pit  
bottom to be at  
ground level to  
1 ft.

