

RECEIVED BY
P. O. BOX 2088
SANTA FE, NEW MEXICO 87501
JAN 3 1985
O. C. D.
ARTESIA, OFFICE

Form C-101
Revised 10-1-78

NO. OF COPIES RECEIVED	
DISTRIBUTION	
SANTA FE	✓
FILE	✓
U.S.G.S.	2
LAND OFFICE	
OPERATOR	✓

5A. Indicate Type of Lease

STATE ☐ FEE ☒

6. State Oil & Gas Lease No.

APPLICATION FOR PERMIT TO DRILL, DEEPEN, OR PLUG BACK

1. Type of work

DRILL ☐

DEEPEN ☐

PLUG BACK ☐

2. Type of Well

OIL WELL ☒

GAS WELL ☒

OTHER

SINGLE ZONE ☐

MULTIPLE ZONE ☐

3. Name of Operator

Yates Petroleum Corporation

4. Address of Operator

207 South 4th Street, Artesia, New Mexico 88210

5. Location of Well

UNIT LETTER 0 LOCATED 990 FEET FROM THE South LINE

1650 FEET FROM THE East LINE OF SEC. 33 TWP. 17S RGE. 25E NMPM

7. Unit Agreement Name

8. Farm or Lease Name

Powell Kissinger BS

9. Well No.

2

10. Field and Pool, or Wildcat
Undes Richard Knob
Atoka Morrow

11. County

Eddy

12. Proposed Depth

8600

13A. Formation

Morrow

13B. Rotary or C.T.

Rotary

14. Elevations (Show whether OF, RL, etc.)

3552' GL

21A. Kind & Status Plug. Bond

Blanket

21B. Drilling Contractor

Undes

22. Approx. Date Work will start

ASAP

PROPOSED CASING AND CEMENT PROGRAM

SIZE OF HOLE	SIZE OF CASING	WEIGHT PER FOOT	SETTING DEPTH	SACKS OF CEMENT	EST. TOP
17 3/4	13 3/8	48# H-40	250'	200sx	Circ.
12 1/4	8 5/8	24# K-55	1100'	600sx	Circ.
7 7/8	5 1/2	17# K-55	TD	450sx	as warranted

We propose to drill and test the Morrow and intermediate formations. Approximately 250' of surface casing will be set to shut off gravel and casings and intermediate casing will be set 100' below the base of the Artesian Water Zone. Both strings will be circulated. 5 1/2" or 4 1/2" casing will be run and cemented with about 1000' of cement cover.

MUD PROGRAM: FW gel/LCM to 1250', water to 7600' (KCL added @4100'), flosal/driskpak/KCL mud to TD.

EOP PROGRAM: EOP's/hydril on 8 5/8" casing, tested daily, yellow jacket prior to drilling Wolfcamp, fluid level & flow sensor equipment.

GAS NOT DEDICATED

APPROX. LIVES FOR 180 DAYS
PERMIT EXPIRES 8-12-85
UNLESS DRILLING UNDERWAY

ABOVE SPACE DESCRIBE PROPOSED PROGRAM: IF PROPOSAL IS TO DEEPEN OR PLUG BACK, GIVE DATA ON PRESENT PRODUCTIVE ZONE AND PROPOSED NEW PRODUCE ZONE. GIVE BLOWOUT PREVENTER PROGRAM, IF ANY.

I hereby certify that the information above is true and complete to the best of my knowledge and belief.

Signed [Signature] Title Regulatory Agent Date 1/2/85

(This space for State Use)

Original Signed By
Ludie A. Clements

Supervisor District II

DATE FEB 12 1985

PROVED BY

CONDITIONS OF APPROVAL, IF ANY:

NSL-1975

App. 1-24-85

NEW MEXICO OIL CONSERVATION COMMISSION
WELL LOCATION AND ACREAGE DEDICATION PLAT

Form C-102
Supersedes C-128
Effective 1-1-65

All distances must be from the outer boundaries of the Section.

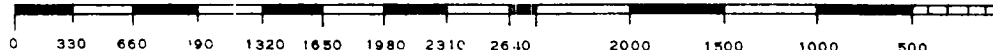
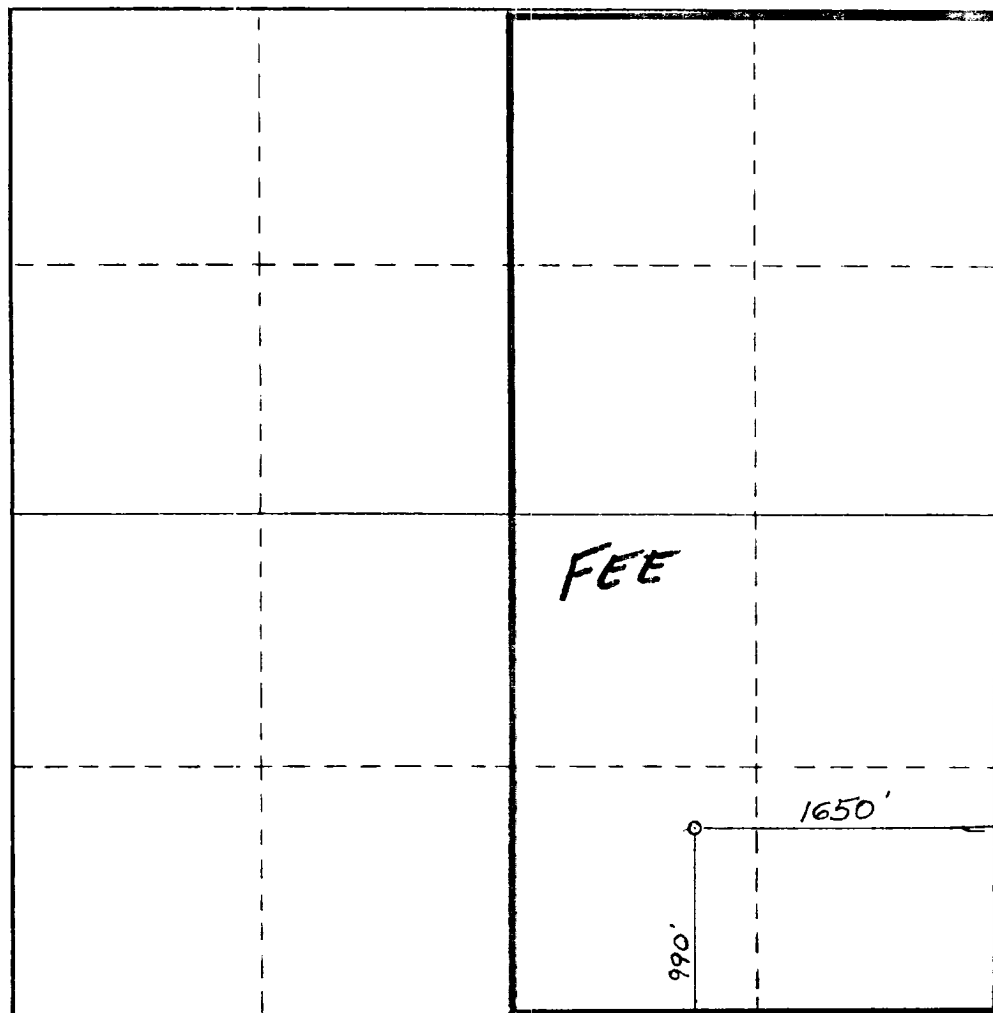
Operator YATES PETROLEUM CORPORATION			Lease Powell Kissinger BS		Well No. 2
Unit Letter 0	Section 33	Township 17 South	Range 25 East	County Eddy	
Actual Footage Location of Well: 990 feet from the South line and 1650 feet from the East line					
Ground Level Elev. 3552	Producing Formation Morrow		Pool UNDERS RICHARD KNOB ATOKA MORROW		Dedicated Acreage: 320 Acres

1. Outline the acreage dedicated to the subject well by colored pencil or hatchure marks on the plat below.
2. If more than one lease is dedicated to the well, outline each and identify the ownership thereof (both as to working interest and royalty).
3. If more than one lease of different ownership is dedicated to the well, have the interests of all owners been consolidated by communitization, unitization, force-pooling, etc?

☐ Yes ☒ No If answer is "yes," type of consolidation _____

If answer is "no," list the owners and tract descriptions which have actually been consolidated. (Use reverse side of this form if necessary.) _____

No allowable will be assigned to the well until all interests have been consolidated (by communitization, unitization, forced-pooling, or otherwise) or until a non-standard unit, eliminating such interests, has been approved by the Commission.



CERTIFICATION

I hereby certify that the information contained herein is true and complete to the best of my knowledge and belief.

Cy Cowan

Name

Cy Cowan

Position

Regulatory Agent

Company

Yates Petroleum Corp.

Date

1/2/85

I hereby certify that the well location shown on this plat was plotted from field notes of actual surveys made by me or under my supervision, and that the same is true and correct to the best of my knowledge and belief.



Date Surveyed

Dec. 21, 1984

Registered Professional Engineer and/or Land Surveyor

Dan R. Reddy

Certificate No.

NMPE&LS #5412

EXHIBIT B

BOP DIAGRAM

RATED 3000[#]

