

STATE OF NEW MEXICO  
ENERGY AND MINERALS DEPARTMENT

OIL CONSERVATION DIVISION

Form C-101  
Revised 10-1-78 30-015-25250

NO. OF COPIES RECEIVED	
DISTRIBUTION	
SANTA FE	5
FILE	5
U.S.G.S.	2
LAND OFFICE	1
OPERATION	1

RECEIVED BY NEW MEXICO 87501

APR 11 1985

O. C. D.

ARTESIA OFFICE

APPLICATION FOR PERMIT TO OPEN, OR PLUG BACK

Type of Work

Type of Well DRILL ☒ DEEPEN ☐ PLUG BACK ☐  
OIL WELL ☒ GAS WELL ☐ OTHER ☐ SINGLE ZONE ☐ MULTIPLE ZONE ☐

Name of Operator

Yates Petroleum Corporation

Address of Operator

207 South Fourth Street - Artesia, NM 88210

Location of Well

UNIT CENTER K LOCATED 2310 FEET FROM THE South LINE  
2310 FEET FROM THE West LINE OF SEC. 19 TWP. 17S RGE. 27E NMPM

5A. Indicate Type of Lease

STATE ☐ FCC ☒

5. State Oil & Gas Lease No.

7. Unit Agreement Name

8. Form or Lease Name

Haines "ACG"

9. Well No.

1

10. Field and Pool, or Wildcat

Y Huel Logan Draw - 5 H

12. County

Eddy

18. Proposed Depth

2200'

19A. Formation

San Andres

10. Rotary or C.T.

Rotary

11. Estimated Depth (ft., etc.)

3293.0' GR

21A. Kind & Strain Plug, Bond

Blanket

21B. Drilling Contractor

Undesignated

22. Approx. Date Work will start

ASAP

PROPOSED CASING AND CEMENT PROGRAM

SIZE OF HOLE	SIZE OF CASING	WEIGHT PER FOOT	SETTING DEPTH	SACKS OF CEMENT	EST. TOP
12-1/4"	8-5/8"	24# K-55	350'	300 sacks	Circulate
7-7/8"	5-1/2"	14# K-55	2200'	450 sacks	

We propose to drill a San Andres test. Approximately 350' of 8-5/8" casing will be run and cemented to the surface to shut off gravel and cavings. A tapered oil string will be run and cemented, perforated and sand frac'd for production.

MUD PROGRAM: FW, gel & LCM to 350'; brine to TD

BOP PROGRAM: BOP's will be installed on the 8-5/8" casing and tested

APPROVAL VALID FOR 180 DAYS  
PERMIT EXPIRES 10-16-85  
UNLESS DRILLING UNDERWAY

BOVE SPACE DESCRIBE PROPOSED PROGRAM: IF PROPOSAL IS TO DEEPEN OR PLUG BACK, GIVE DATA ON PRESENT PRODUCTIVE ZONE AND PROPOSED NEW PRODUCTIVE ZONE. GIVE PLUGOUT PREVENTER PROGRAM, IF ANY.

I hereby certify that the information above is true and complete to the best of my knowledge and belief.

by C. J. Cowan Title Regulatory Agent Date April 10, 1985

(This space for State Use)

ROVED BY Mike Williams TITLE OIL AND GAS INSPECTOR DATE APR 16 1985

DITIONS OF APPROVAL, IF ANY:

Notary Public O.C.G. in sufficient

and to witness cementing

the 8 5/8 casing

NEW MEXICO OIL CONSERVATION COMMISSION  
WELL LOCATION AND ACREAGE DEDICATION PLAT

Form C-102  
Supersedes C-128  
Effective 1-1-65

All distances must be from the outer boundaries of the Section.

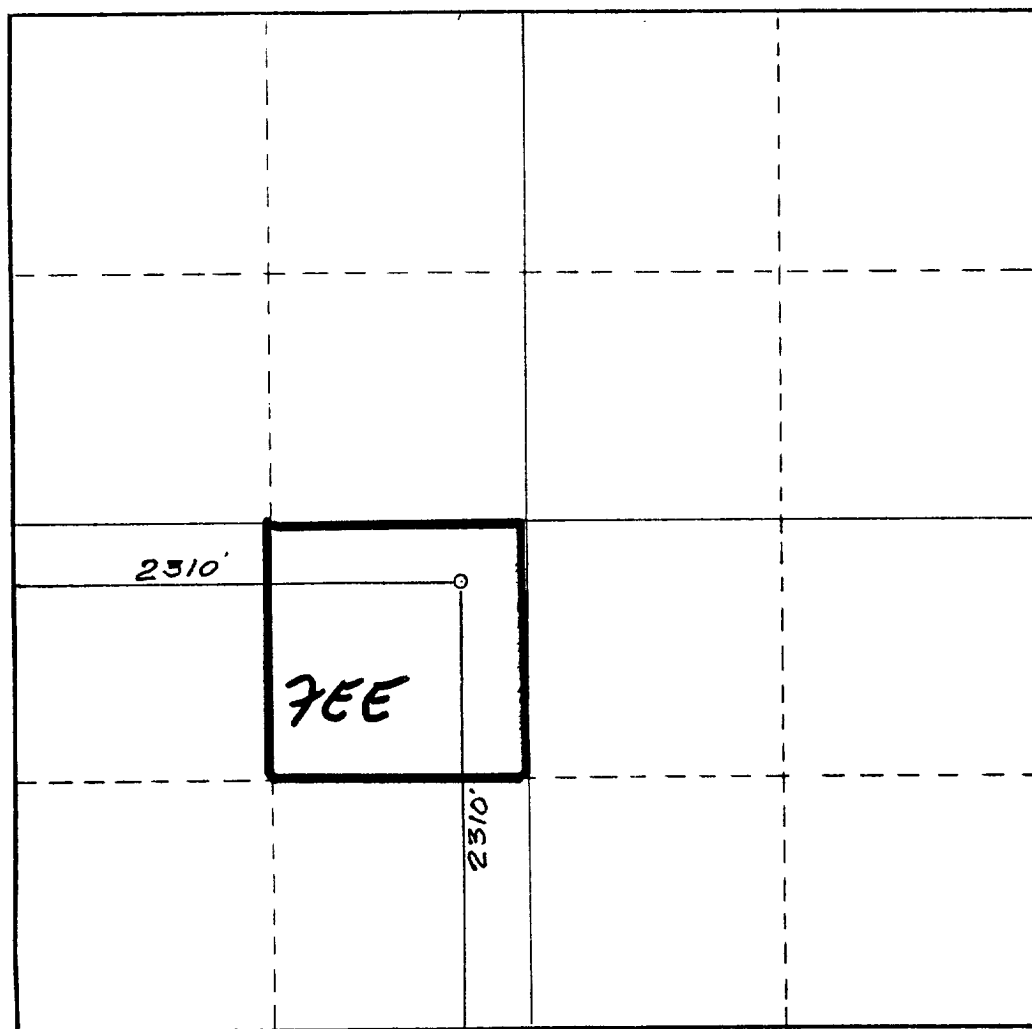
Operator <b>YATES PETROLEUM CORPORATION</b>		Lease <b>Haines ACG</b>		Well No. <b>1</b>
Unit Letter <b>K</b>	Section <b>19</b>	Township <b>17 South</b>	Range <b>27 East</b>	County <b>Eddy</b>
Actual Footage Location of Well: <b>2310</b> feet from the <b>South</b> line and <b>2310</b> feet from the <b>West</b> line				
Ground Level Elev. <b>3293.</b>	Producing Formation <b>SAN ANDRES</b>	Pool <b>Logan Draw S.A.</b>	Dedicated Acreage: <b>40</b> Acres	

1. Outline the acreage dedicated to the subject well by colored pencil or hachure marks on the plat below.
2. If more than one lease is dedicated to the well, outline each and identify the ownership thereof (both as to working interest and royalty).
3. If more than one lease of different ownership is dedicated to the well, have the interests of all owners been consolidated by communitization, unitization, force-pooling, etc?

☐ Yes ☒ No If answer is "yes;" type of consolidation \_\_\_\_\_

If answer is "no," list the owners and tract descriptions which have actually been consolidated. (Use reverse side of this form if necessary.) \_\_\_\_\_

No allowable will be assigned to the well until all interests have been consolidated (by communitization, unitization, forced-pooling, or otherwise) or until a non-standard unit, eliminating such interests, has been approved by the Commission.



CERTIFICATION

I hereby certify that the information contained herein is true and complete to the best of my knowledge and belief.

*Cy Cowan*

Name

Cy Cowan

Position

Regulatory Agent

Company

Yates Petroleum Corporation

Date

April 10, 1985

**DAN R. REDDY**  
NEW MEXICO  
REGISTERED PROFESSIONAL ENGINEER  
I hereby certify that the well location shown on this plat was plotted from field notes of actual surveys made by me or under my supervision and that the same is true and correct to the best of my knowledge and belief.

Date Surveyed

April 4, 1985

Registered Professional Engineer and/or Land Surveyor

*Dan R. Reddy*

Certificate No.

NM PE&LS NO. 5412

0 330 660 990 1320 1650 1980 2310 2640 2000 1500 1000 500 0

# EXHIBIT B

## BDP DIAGRAM

RATED 3000<sup>#</sup>

