

Artesia, NM 88210

UNITED STATES  
DEPARTMENT OF THE INTERIOR  
GEOLOGICAL SURVEY

RECEIVED BY  
SUBMIT IN LIGATE\*  
(Other instructions on reverse side)

Form approved.  
Budget Bureau No. 42-R1425.

50-015-25342

C/SF

APPLICATION FOR PERMIT TO DRILL ~~DEEPEN OR PLUG BACK~~

1a. TYPE OF WORK

DRILL ☒

DEEPEN ☐

PLUG BACK ☐

b. TYPE OF WELL

OIL WELL ☒

GAS WELL ☐

OTHER

SINGLE ZONE ☐

MULTIPLE ZONE ☐

2. NAME OF OPERATOR

Metex Pipe and Supply

3. ADDRESS OF OPERATOR

2407 Sierra Vista Rd. Artesia, New Mexico 88210

4. LOCATION OF WELL (Report location clearly and in accordance with any State requirements.)\*

At surface

3603' FNL & 2310' FEL

At proposed prod. zone

Same

14. DISTANCE IN MILES AND DIRECTION FROM NEAREST TOWN OR POST OFFICE\*

17 road miles north of Loco Hills, NM

15. DISTANCE FROM PROPOSED\*

LOCATION TO NEAREST  
PROPERTY OR LEASE LINE, FT.  
(Also to nearest drig. unit line, if any)

330'

16. NO. OF ACRES IN LEASE

759.63

17. NO. OF ACRES ASSIGNED  
TO THIS WELL

40

18. DISTANCE FROM PROPOSED LOCATION\*

TO NEAREST WELL, DRILLING, COMPLETED,  
OR APPLIED FOR, ON THIS LEASE, FT.

N/A

19. PROPOSED DEPTH

3600'

20. ROTARY OR CABLE TOOLS

Rotary

21. ELEVATIONS (Show whether DF, RT, GR, etc.)

4065.2

22. APPROX. DATE WORK WILL START\*

July 22, 1985

23.

PROPOSED CASING AND CEMENTING PROGRAM

SIZE OF HOLE	SIZE OF CASING	WEIGHT PER FOOT	SETTING DEPTH	QUANTITY OF CEMENT
12 1/2"	8 5/8"	24#	300'	Circulate cement to surface
7 7/8"	5 1/2"	17#	3600'	500 Sx cement

Mud Program: Drilling mud will be fresh water with gel, Vis. 34.

BOP Program: After setting the 8 5/8" surface casing, the Cameron 11", 5000 psi BOP will be attached and tested with rams closed, and the surface pipe will be tested before drilling out.

IN ABOVE SPACE DESCRIBE PROPOSED PROGRAM: If proposal is to deepen or plug back, give data on present productive zone and proposed new productive zone. If proposal is to drill or deepen directionally, give pertinent data on subsurface locations and measured and true vertical depths. Give blowout preventer program, if any.

24.

Agent for:

SIGNED

*George Smith*

TITLE

Metex Pipe and Supply

DATE

July 2, 1985

(This space for Federal or State office use)

PERMIT NO.

APPROVAL DATE

APPROVED BY

TITLE

DATE

CONDITIONS OF APPROVAL, IF ANY:

7-2288

APPROVAL SUBJECT TO  
GENERAL REQUIREMENTS AND  
SPECIAL STIPULATIONS  
ATTACHED

**NEW MEXICO OIL CONSERVATION COMMISSION  
WELL LOCATION AND ACREAGE DEDICATION PLAT**

Form C-102  
Supersedes C-128  
Effective 1-1-85

All distances must be from the outer boundaries of the Section

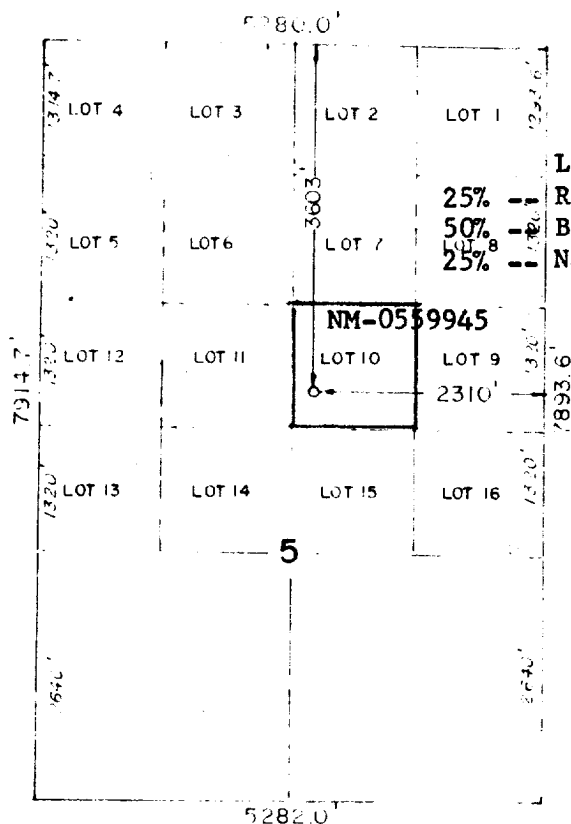
Operator <b>METEX PIPE &amp; SUPPLY CO.</b>			Lease <b>SUNBURST FEDERAL</b>		Well No. <b>1</b>
Unit Letter <b>J</b>	Section <b>5</b>	Township <b>16S</b>	Range <b>31E</b>	County <b>EDDY</b>	
Actual Footage Location of Well: <div style="display: flex; justify-content: space-between;"> <span>3603 feet from the NORTH line and</span> <span>2310 feet from the EAST line</span> </div>					
Ground Level Elev. <b>4065.2</b>	Producing Formation <b>Grayburg/San Andres</b>	Pool <b>North Square Lake GB/SA</b>		Dedicated Acreage: <b>40</b> Acres	

1. Outline the acreage dedicated to the subject well by colored pencil or hatchure marks on the plat below.
2. If more than one lease is dedicated to the well, outline each and identify the ownership thereof (both as to working interest and royalty).
3. If more than one lease of different ownership is dedicated to the well, have the interests of all owners been consolidated by communitization, unitization, force-pooling, etc?

☐ Yes    ☐ No    If answer is "yes," type of consolidation \_\_\_\_\_

If answer is "no," list the owners and tract descriptions which have actually been consolidated. (Use reverse side of this form if necessary.) \_\_\_\_\_

No allowable will be assigned to the well until all interests have been consolidated (by communitization, unitization, forced-pooling, or otherwise) or until a non-standard unit, eliminating such interests, has been approved by the Commission.



**Lease Ownership:**  
 25% -- Ralph Trigg, Jr.  
 50% -- Billie Trigg  
 25% -- Nancy Conrow

**CERTIFICATION**

I hereby certify that the information contained herein is true and complete to the best of my knowledge and belief.

*George R. Smith*  
 Name

**George R. Smith**  
 Position

**Agent for:**

**Metex Pipe and Supply**  
 Company

**July 3, 1985**  
 Date

I hereby certify that the well location shown on this plat was plotted from field notes of actual surveys made by me or under my supervision, and that the same is true and correct to the best of my knowledge and belief.

**6/26/85**  
 Date Surveyed

**Registered Professional Engineer and/or Land Surveyor**

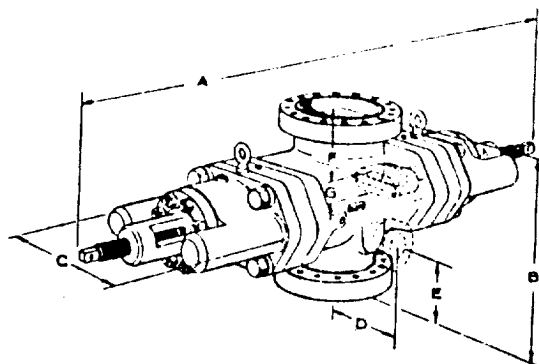
*John W. West*

**John W. West 678**  
 Certificate No

**Ronald J. Eidson 3239**

Scale: 1" = 2000'

## U BLOWOUT PREVENTER ENGINEERING DATA



Single Open Face Flanged U Blowout Preventer

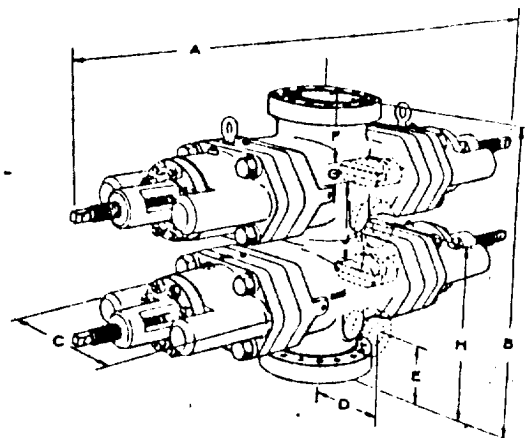
**Side Outlets** to 4" size (7-1/16" on 26-3/4" preventers) can be provided beneath each set of rams, on either or both sides of U preventers. Side outlet flanges are open face and have the same pressure rating as the vertical run flanges. Valve removal preparations can be provided. To obtain a quotation, the number and size of outlets should be specified.

**Flanges** conform to API Standard 6A. Type 6BX flanges are standard for 10,000 psi, 15,000 psi, and 20,000 psi working pressures and for 5000 psi working pressures for 13-5/8" and larger bore preventers.

Although most preventers have open face flanges or Cameron clamp hubs, preventers with studed flanges can be furnished.

**Sizes and Dimensions** are in inches. The over-all length "A" given in the tables does not include the optional wedgelocks. No spacers between rams are included in the table of dimensions of double ram models. Preventers with spacers to clear tool joints can be obtained on special order. For information on preventers with spacers, or sizes not listed, consult your Cameron representative.

**Hydraulic Control Connections** to operate rams and bonnets are 1" NPT. There are two connections for each set of rams. Hydraulic ram lock connections are 1/2" NPT.



Double Open Face Flanged U Blowout Preventer

### Engineering Data Designations. See Charts on Following Page

- A-1 Over-all length, bonnets closed, locking screws locked
- A-2 Over-all length, ram change, bonnets opened, locking screws unlocked
- B-1 Over-all height flanged
- B-2 As above, with Cameron clamp hubs
- C Over-all width without side outlets (max. width)
- D Centerline of preventer to outlet flange or hub face. Distance is variable.
- E-1 Centerline of side outlet (outlet below lower rams in double model) to bottom flange face
- E-2 As above, to bottom hub face
- F-1 Top of upper ram to top flange face
- F-2 As above, to top hub face
- G Ram height
- H-1 Centerline of side outlet between rams to bottom flange face
- H-2 As above, to bottom hub face
- J Top of lower ram to bottom of upper ram

### EXHIBIT "E"

METEX PIPE and SUPPLY  
Sunburst Federal, Well No. 1  
BOP Specification

11" 5000# double

APPLICATION FOR DRILLING  
METEX PIPE and SUPPLY  
Sunburst Federal, Well No. 1  
3603' FNL & 2310' FEL, Sec. 5-T16S-R31E  
Eddy County, New Mexico  
Lease No.: NM-0559945  
(Development Well)

In conjunction with Form 9-331C, Application for Permit to Drill subject well, Metex Pipe and Supply submits the following items of pertinent information in accordance with BLM requirements:

1. The geologic surface formation is recent Permian with Quaternary alluvium and other surficial deposits.
2. The estimated tops of geologic markers are as follows:

Top of Salt	909'	Grayburg	3065'
Base of Salt	1700'	Premier Marker	3235'
Yates	1852'	Water Sand	3320'
7-Rivers	2127'	Premier Pay	3375'
Bowser	2482'	San Andres	3421'
Queen	2672'	Lovington	3505'
Penrose	3009'	T.D.	3600'
3. The estimated depths at which water, oil or gas formations are anticipated to be encountered:

Water: Fresh water from 100 to 300 feet  $\pm$ .  
Possibly water in the 3320' water sand if present.

Gas: Possible in Queen at 2672'.

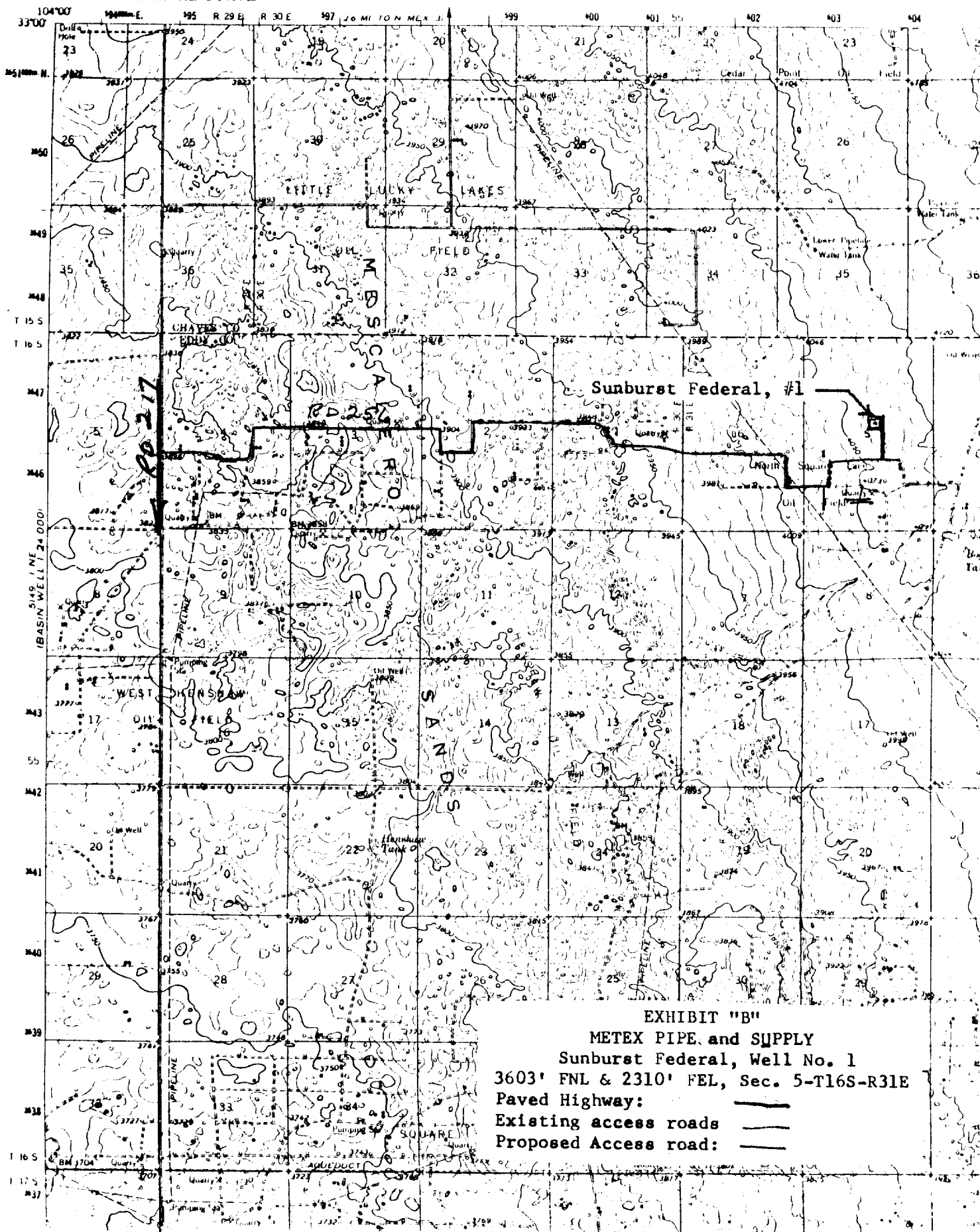
Oil: Possible in Queen at 2672' and the Premier at 3375'.
4. Proposed Casing Program: See Form 9-331C.
5. Proposed Control Equipment: See Form 9-331C and Exhibit "D".
6. Mud Program: See Form 9-331C.
7. Auxiliary Equipment: Blowout preventer, gas detector, kelly cock, pit level monitor, flow sensors and stabbing valve.
8. Testing, Logging and Coring Program:

Drill Stem Tests: None planned.

Logging:	GR/SNP, DLL/RXO	300'	to	T.D.
	CCL/CBL	Surface	to	T. D.

Coring: None planned.
9. No abnormal pressures or temperatures are anticipated. In the event abnormal pressures are encountered the proposed mud program will be modified to increase the mud weight.
10. Anticipated starting date: July 25, 1985.  
Anticipated completion of drilling operations: Approximately 2 to 3 weeks.

3/30 11 SE  
(KING CAMP)  
1-24-000



PLAT FOR PIT LOCATION FOR ARTESIA FISHING TOOL

Rigs #1 & #2; L & M DRILLING #2 and LARUE  
DRILLING #2

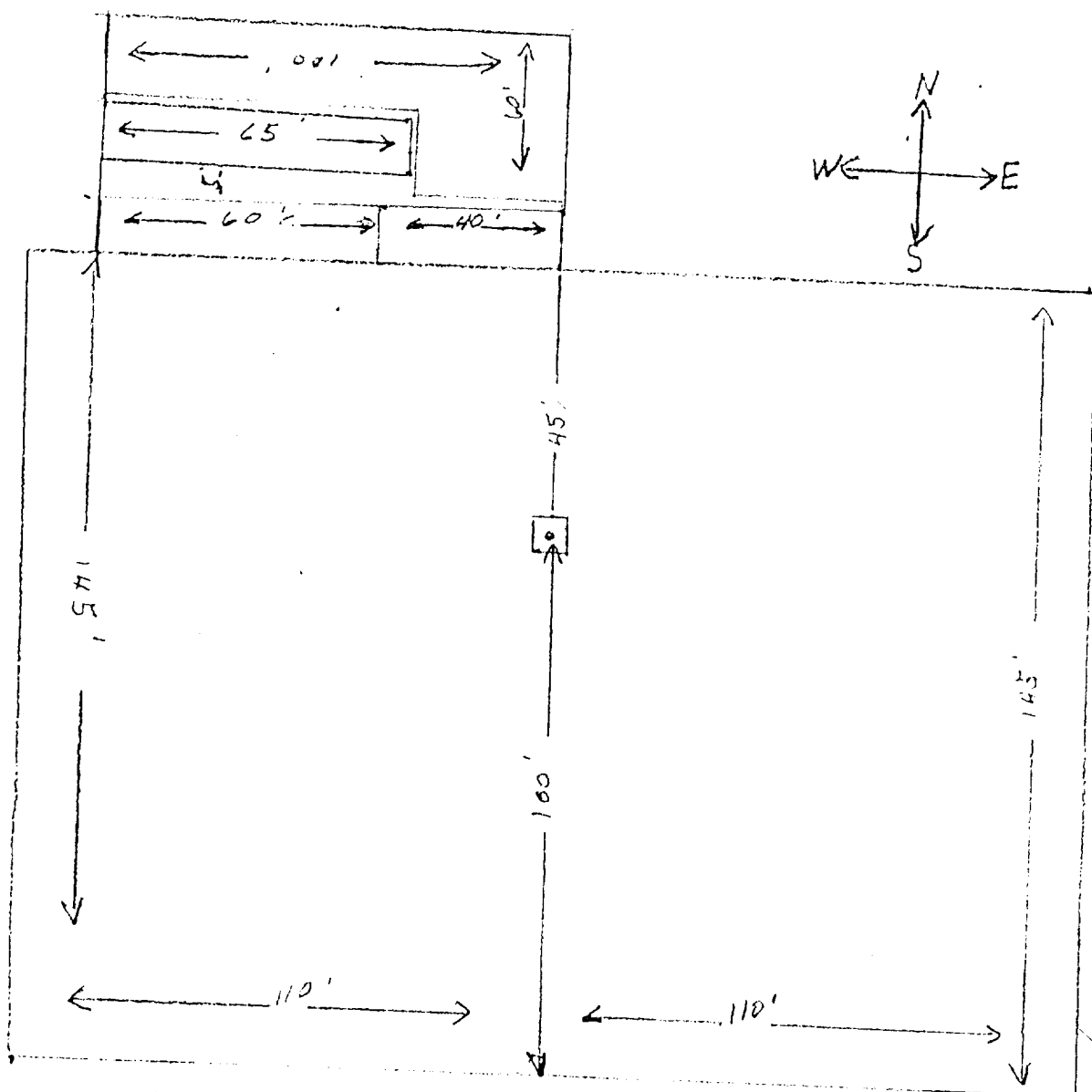


EXHIBIT "D"  
METEX PIPE and SUPPLY  
Sunburst Federal, Well No. 1  
Rig Layout