

UNITED STATES DEPARTMENT OF THE INTERIOR
GEOLOGICAL SURVEY

30-015-25363

APPLICATION FOR PERMIT TO DRILL, DEEPEN, OR PLUG BACK

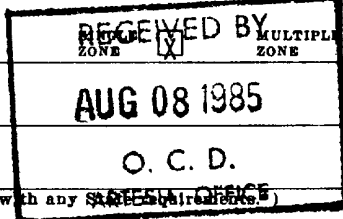
1a. TYPE OF WORK
DRILL ☒ DEEPEN ☐ PLUG BACK ☐

b. TYPE OF WELL
OIL WELL ☒ GAS WELL ☐ OTHER ☐

2. NAME OF OPERATOR
McClellan Oil Corporation

3. ADDRESS OF OPERATOR
P.O. Drawer 730, Roswell, NM 88202

4. LOCATION OF WELL (Report location clearly and in accordance with any State requirements)
At surface
330' FWL & 660' FSL
At proposed prod. zone



14. DISTANCE IN MILES AND DIRECTION FROM NEAREST TOWN OR POST OFFICE
20 miles north west of Loco Hills

15. DISTANCE FROM PROPOSED LOCATION TO NEAREST PROPERTY OR LEASE LINE, FT. (Also to nearest drlg. unit line, if any)
330'

16. NO. OF ACRES IN LEASE
640

17. NO. OF ACRES ASSIGNED TO THIS WELL
40

18. DISTANCE FROM PROPOSED LOCATION TO NEAREST WELL, DRILLING, COMPLETED, OR APPLIED FOR, ON THIS LEASE, FT.
990'

19. PROPOSED DEPTH
1850'

20. ROTARY OR CABLE TOOLS
Rotary

21. ELEVATIONS (Show whether DF, RT, GR, etc.)
3642' G.L.

22. APPROX. DATE WORK WILL START
8/15/85

23. PROPOSED CASING AND CEMENTING PROGRAM

SIZE OF HOLE	SIZE OF CASING	WEIGHT PER FOOT	SETTING DEPTH	QUANTITY OF CEMENT
12-1/4"	8-5/8"	20	310'	Circulated - 300 sx "C" 270 lbs
7-7/8"	5-1/2"	14	1850'	400 sx "C"

Propose to drill a new well to test the Penrose Sand in the Queen formation. Will run 8-5/8" casing to top of the Salt. Will drill with fresh water and mud up with 30 vis mud at total depth. If production is indicated by logs, will run 5-1/2" casing and attempt completion.

Salt 320'
Yates 730'
Queen 1480'
T.D. 1850'

IN ABOVE SPACE DESCRIBE PROPOSED PROGRAM: If proposal is to deepen or plug back, give data on present productive zone and proposed new productive zone. If proposal is to drill or deepen directionally, give pertinent data on subsurface locations and measured and true vertical depths. Give blowout preventer program, if any.

24. SIGNED Paul Ragsdale TITLE Operations Manager DATE 7/24/85
(This space for Federal or State office use)

PERMIT NO. _____ APPROVAL DATE _____
APPROVED BY Mark Horn TITLE CHIEF ENGINEER DATE 8-7-85
CONDITIONS OF APPROVAL, IF ANY: C8

*See Instructions On Reverse Side

APPROVAL SUBJECT TO
GENERAL REQUIREMENTS AND
SPECIAL STIPULATIONS
ATTACHED

Posted IDI
APIX NL
8-16-85

All distances must be from the outer boundaries of the Section.

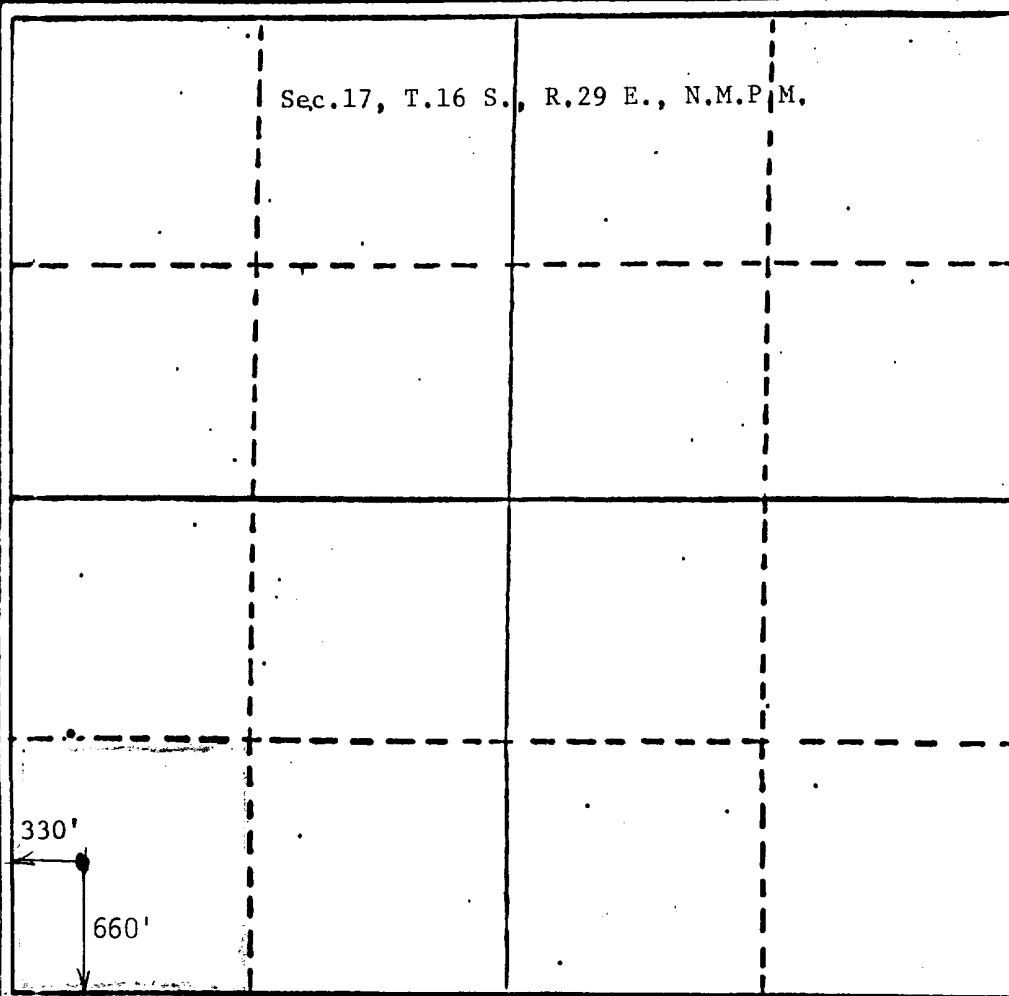
Operator McClellan Oil Corp..			Lease / Renee Federal		Well No. 1
Unit Letter M	Section 17	Township 16 South	Range 29 East	County Eddy	
Actual Postage Location of Well					
330 feet from the West		line and 660 feet from the South		line	
Ground Level Elev. 3642	Producing Formation Queen		Pool High Lonesome		Dedicated Acreage 40 Acres

1. Outline the acreage dedicated to the subject well by colored pencil or hatchure marks on the plat below.
2. If more than one lease is dedicated to the well, outline each and identify the ownership thereof (both as to working interest and royalty).
3. If more than one lease of different ownership is dedicated to the well, have the interests of all owners been consolidated by communitization, unitization, force-pooling, etc?

☐ Yes ☐ No If answer is "yes," type of consolidation _____

If answer is "no," list the owners and tract descriptions which have actually been consolidated. (Use reverse side of this form if necessary.) _____

No allowable will be assigned to the well until all interests have been consolidated (by communitization, unitization, forced-pooling, or otherwise) or until a non-standard unit, eliminating such interests, has been approved by the Division



CERTIFICATION

I hereby certify that the information contained herein is true and complete to the best of my knowledge and belief.

Paul Ragsdale

Name
Paul Ragsdale

Position
Operations Manager

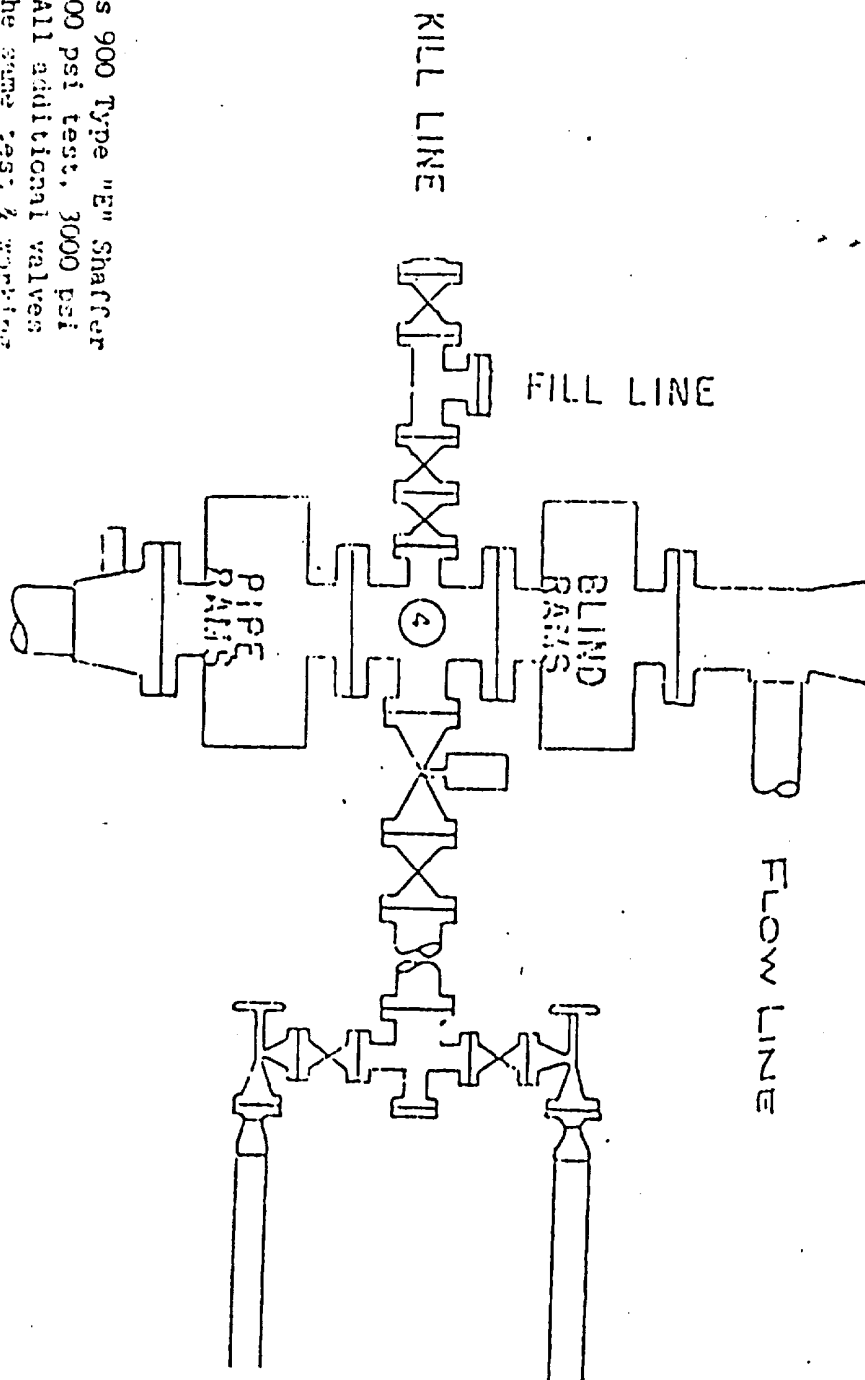
Company
McClellan Oil Corp.

Date
July 24, 1985

I hereby certify that the well location shown on this plat was plotted from field notes of actual surveys made by me or under my supervision, and that the same is true and correct to the best of my knowledge and belief.

AND. JAQUESS
Date Surveyed
July 23, 1985
Registered Professional Engineer
and/or Land Surveyor
6000 N. Jaquess, Santa Fe, N.M. & L.S.
Certificate No. 62906

WEK DRILLING CO., INC. - Rig 1 & 3.
BLOWOUT PREVENTER SPECIFICATION



BOP's are 10" Series 900 Type "E" Shaffer
 Double Hydraulic 6000 psi test, 3000 psi
 working pressure. All additional valves
 & connections are the same test & working
 pressures.

EXHIBIT "E"
 McClellan Oil Corporation
 BOP Specification

DESIGNATION OF OPERATOR

The undersigned is, on the records of the Bureau of Land Management, holder of lease

DISTRICT LAND OFFICE: Santa Fe, New Mexico

SERIAL No.: LC-046119-A

and hereby designates

NAME: McCLELLAN OIL CORPORATION

ADDRESS: P. O. Drawer 730

Roswell, New Mexico 88202

as his operator and local agent, with full authority to act in his behalf in complying with the terms of the lease and regulations applicable thereto and on whom the supervisor or his representative may serve written or oral instructions in securing compliance with the Operating Regulations with respect to (describe acreage to which this designation is applicable):

TOWNSHIP 16 SOUTH, RANGE 29 EAST, N.M.P.M.

Section 17: $W\frac{1}{2}SW\frac{1}{4}$

Section 20: $W\frac{1}{2}NW\frac{1}{4}$

Eddy County, New Mexico

containing 160 acres, more or less

AS TO THE RIGHTS FROM THE SURFACE TO A DEPTH OF 2000' ONLY.

It is understood that this designation of operator does not relieve the lessee of responsibility for compliance with the terms of the lease and the Operating Regulations. It is also understood that this designation of operator does not constitute an assignment of any interest in the lease.

In case of default on the part of the designated operator, the lessee will make full and prompt compliance with all regulations, lease terms, or orders of the Secretary of the Interior or his representative.

The lessee agrees promptly to notify the supervisor of any change in the designated operator.

NORWOOD OIL COMPANY

BY:

Betty Ruth Norwood
(Signature of lessee)

Betty Ruth Norwood, President

P. O. Drawer 1029 Malakoff, TX 75148

(Address)

July 9, 1985
(Date)

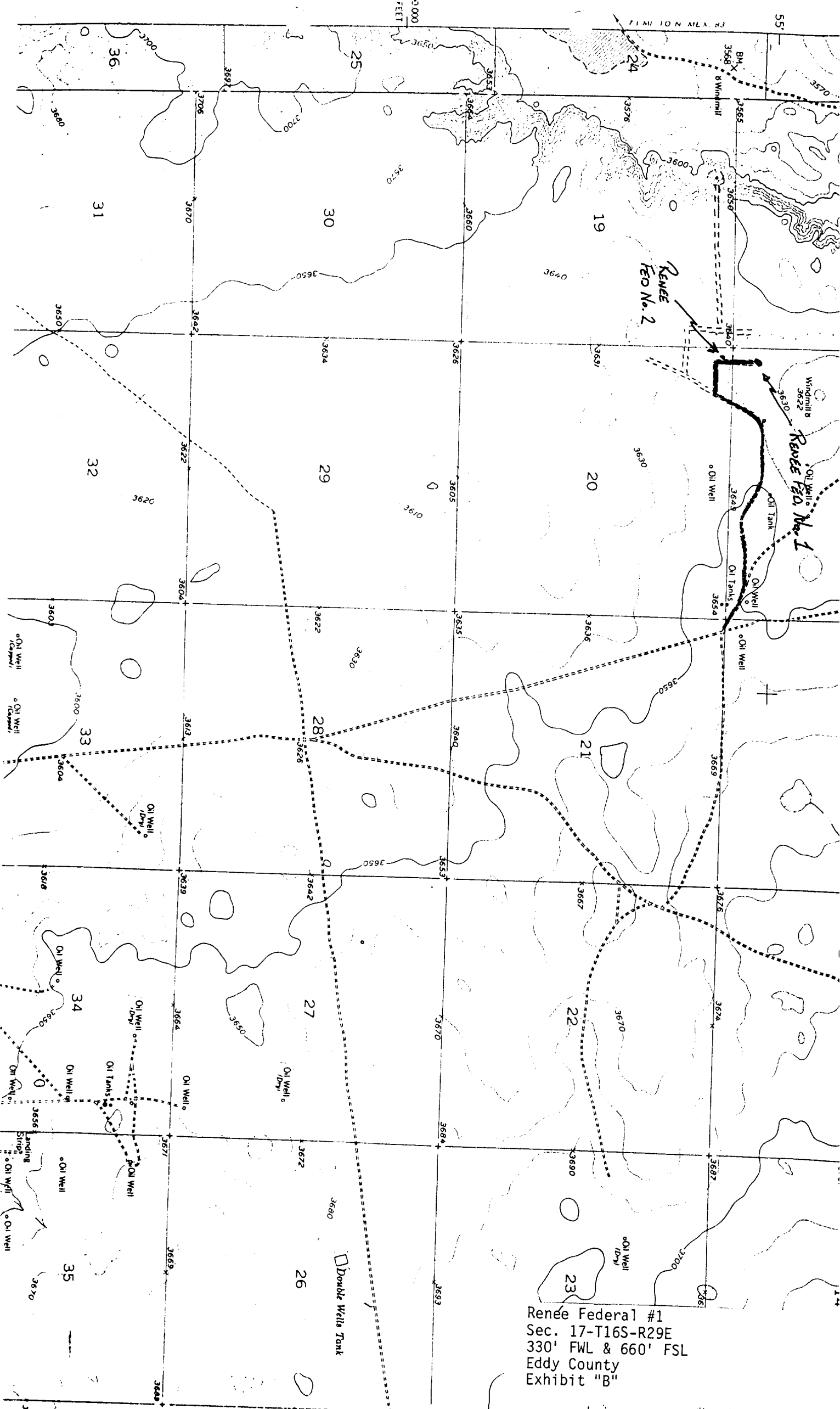
McClellan Oil Corp.
Renée Federal No. 1

REQUIREMENTS
(NTL-6)

1. Location: 330' FWL & 660' FSL of Section 17-T16S-R29E, Eddy County
2. Elevation: 3642' G.L.
3. Geologic name of surface formation: See archaeological report
4. Type of drilling rig and associated equipment: Rotary
5. Proposed drilling depth and objective formation: 1850', Penrose
6. Estimated tops of geologic markers:

Yates	<u>730'</u>	San Andres	<u> </u>	Abo	<u> </u>
7-Rivers	<u> </u>	Glorieta	<u> </u>	Wolfcamp	<u> </u>
Queen	<u>1480'</u>	Tubb	<u> </u>		
7. Estimated depths of any oil, water, or gas: Possible oil at 1760'.
- 8-9. Proposed casing program:

<u>8-5/8" @ 320' Grade X-42 Wt. 20 lb. Type Cement 300 sx-Circ.</u>
<u>5-1/2" @ 1850' Grade J-55 Wt. 14 lb. Type Cement 400 sx</u>
10. Specifications for pressure control equipment and testing procedures:
Schaeffer type E 10" series 900 hydraulic BOP
11. Type and characteristics of drilling fluids: Fresh water with 30
viscosity.
12. Testing, logging, and coring programs: Will run Compensated Neutron,
Formation Density, Laterolog.
13. Anticipated abnormal pressures or temperature: None anticipated
14. Anticipated commencement and completion date:
August 15, 1985 - August 30, 1985



Renee Federal #1
Sec. 17-T16S-R29E
330' FWL & 660' FSL
Eddy County
Exhibit "B"

