

Form approved. C
Budget Bureau No. 1004-0136
Expires August 31, 1985

Title 18 U.S.C. Section 1001, makes it a crime for any person knowingly and willfully to make to any department or agency of the United States any false, fictitious or fraudulent statements or representations as to any matter within its jurisdiction.

MEXICO OIL CONSERVATION COMMISSION
WELL LOCATION AND ACREAGE DEDICATION PLAT

Form C-102
Supersedes C-128
Effective 1-1-65

All distances must be from the outer boundaries of the Section

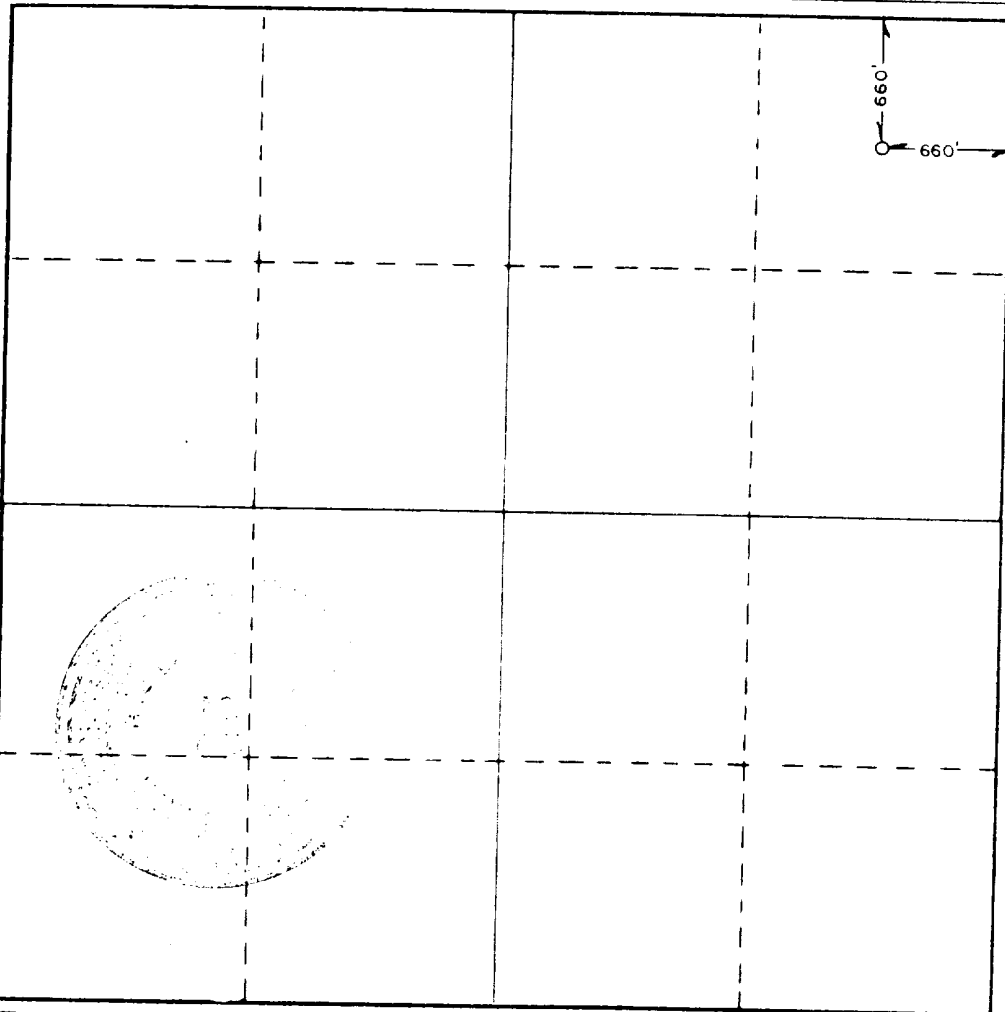
Operator MILLARD DECK ESTATE			Lease FED. 19		Well No. 1
Tract Letter A	Section 19	Township 16 SOUTH	Range 29 EAST	County EDDY	
Actual Footage Location of Well: 660 feet from the NORTH line and 660 feet from the EAST line					
Ground Level Elev. 3638.8'	Producing Formation Penrose		Pool <i>Millard Deck Estate</i>	Dedicated Acreage: 40 Acres	

1. Outline the acreage dedicated to the subject well by colored pencil or hatchure marks on the plat below.
2. If more than one lease is dedicated to the well, outline each and identify the ownership thereof (both as to working interest and royalty).
3. If more than one lease of different ownership is dedicated to the well, have the interests of all owners been consolidated by communitization, unitization, force-pooling, etc?

☐ Yes ☐ No If answer is "yes," type of consolidation _____

If answer is "no," list the owners and tract descriptions which have actually been consolidated. (Use reverse side of this form if necessary.) _____

No allowable will be assigned to the well until all interests have been consolidated (by communitization, unitization, forced-pooling, or otherwise) or until a non-standard unit, eliminating such interests, has been approved by the Commission.



CERTIFICATION

I hereby certify that the information contained herein is true and complete to the best of my knowledge and belief.

Beth McDonald
Name

Beth McDonald

Position Agent for Ray Selby,
Field Representative

Company Interfirst Bank Ft. Worth,
NA, Indep. Exec. for the Millard
Deck Estate No. 4193

Date

8/16/85

I hereby certify that the well location shown on this plat was plotted from field notes of actual surveys made by me or under my supervision, and that the same is true and correct to the best of my knowledge and belief.

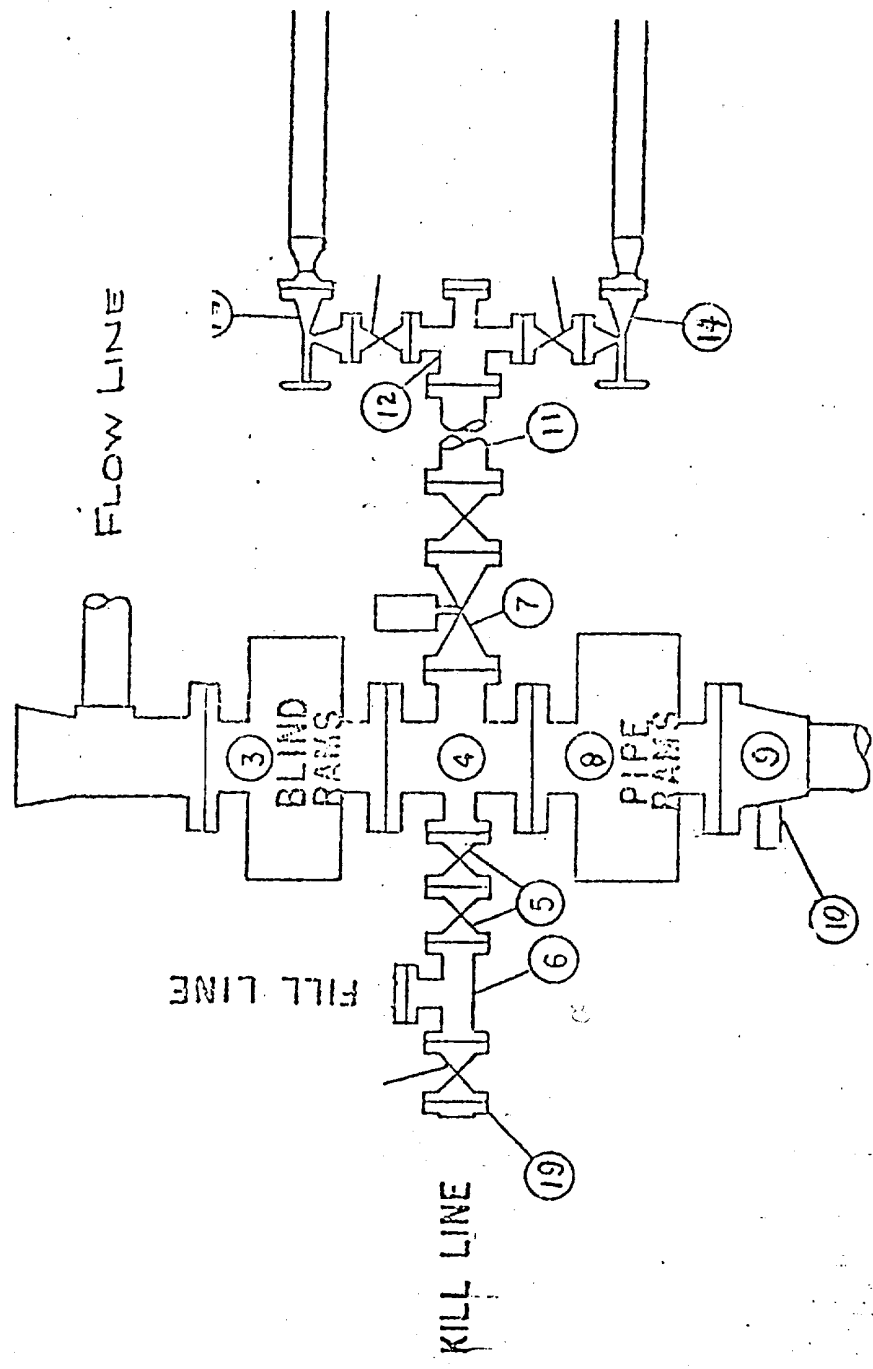
Date Surveyed
AUGUST 9, 1985

Registered Professional Engineer
and/or Land Surveyor

John W. West

Certificate No. JOHN W. WEST, 676
RONALD J. EIDSON, 3239

WEK DRILLING CO., INC. - Rig 1 & 3.
BLOWOUT PREVENTER SPECIFICATION



SUPPLEMENTAL DRILLING DATA

INTERFIRST BANK FORTH WORTH, N.A., INDEPENDENT EXECUTOR
FOR THE MILLARD DECK ESTATE NO. 4193
WELL: Federal "19" #1
660' FNL & 660' FEL Sec. 19-T16S-R29E
EDDY COUNTY, NEW MEXICO

1. SURFACE FORMATION: Redbed.

2. ESTIMATED TOPS OF GEOLOGIC MARKERS:

Yates	740'	Queen	1490'
Seven Rivers	900'	Penrose	1732'

3. ANTICIPATED POROSITY ZONES:

Water	None
Oil	1700' - 1900'

4. CASING DESIGN:

<u>Hole Size</u>	<u>Casing</u>	<u>Interval</u>	<u>Weight</u>	<u>Class</u>	<u>Joint</u>	<u>Condition</u>
12 1/4"	8 5/8"	0 - 300'	24.0#	J-55	ST&C	New
7 7/8"	4 1/2"	0 - 1900'	9.5#	J-55	ST&C	New

5. SURFACE CONTROL EQUIPMENT: A Shaffer Type E 10" - 900 Blowout preventer with 4" blind rams. A sketch of BOP Stack is attached.

6. CIRCULATING MEDIUM: *0-300' - Fresh water - R.O.*
300 - TD: Salt Water.

7. AUXILIARY EQUIPMENT: Drill string safety valve.

8. TESTING, LOGGING AND CORING PROGRAMS: Gamma Ray Neutron Log from 0 - TD.

9. ABNORMAL PRESSURES, TEMPERATURES OR GASES: None anticipated.

10. ANTICIPATED DATES: It is planned that operations will commence about September 1, 1985, or immediately upon approval of this application. Duration of drilling and completion operations should be 20 to 40 days.

R.27 E.

R.28 E.

R.29 E.

104°00' 33"00"

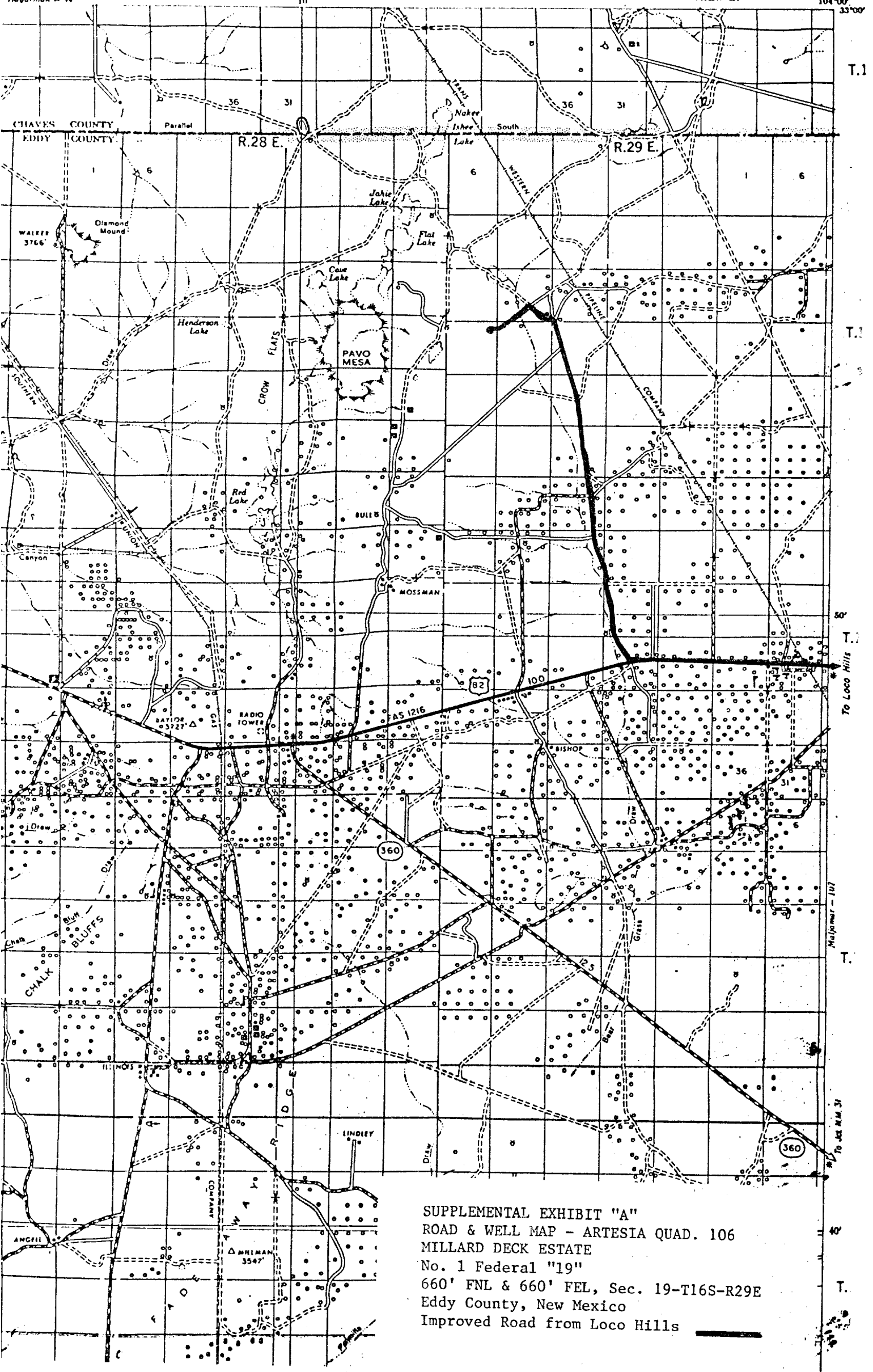
T.1

T.1

T.1

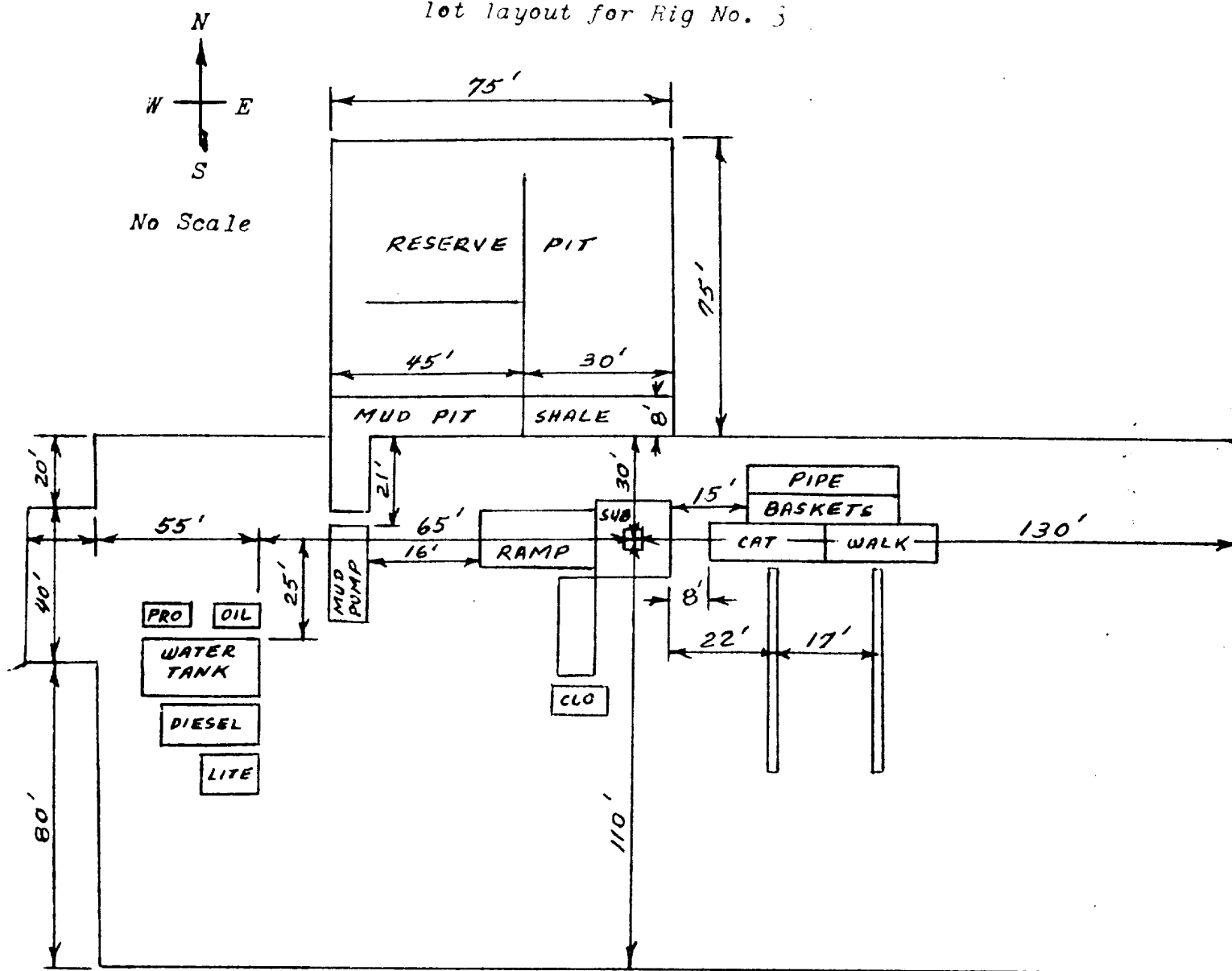
T.1

T.1



SUPPLEMENTAL EXHIBIT "A"
 ROAD & WELL MAP - ARTESIA QUAD. 106
 MILLARD DECK ESTATE
 No. 1 Federal "19"
 660' FNL & 660' FEL, Sec. 19-T16S-R29E
 Eddy County, New Mexico
 Improved Road from Loco Hills

lot layout for Rig No. 3



Cellar - 5' x 5' x 5'

This Rig equipped with Schaffer type "E" 10" series 900 BOP with 4" blind rams, kill line and choke manifold. Keomey hydraulic controls and accumulator with remote controls.

Maintain six (6) foot spacing between oil tank, water tank, diesel tank and light plant.

Twenty (20) foot by Forty(40) foot stinger area at west end of location.

EXHIBIT "B"