

UNITED STATES
DEPARTMENT OF THE INTERIOR
GEOLOGICAL SURVEY

APPLICATION FOR PERMIT TO DRILL, DEEPEN, OR PLUG BACK

1a. TYPE OF WORK

DRILL ☒DEEPEN ☐PLUG BACK ☐

b. TYPE OF WELL

OIL
WELL ☒GAS
WELL ☐OTHER ☐

2. NAME OF OPERATOR

McClellan Oil Corporation ✓

3. ADDRESS OF OPERATOR

P. O. Dr. 730, Roswell, NM 88202

4. LOCATION OF WELL (Report location clearly and in accordance with
At surface

1980' FSL & 1980' FEL

At proposed prod. zone

Same

14. DISTANCE IN MILES AND DIRECTION FROM NEAREST TOWN OR POST OFFICE*

13 miles southeast of Lake Arthur, NM

15. DISTANCE FROM PROPOSED*

LOCATION TO NEAREST
PROPERTY OR LEASE LINE, FT.
(Also to nearest drlg. unit line, if any)

660'

18. DISTANCE FROM PROPOSED LOCATION*
TO NEAREST WELL, DRILLING, COMPLETED,
OR APPLIED FOR, ON THIS LEASE, FT.

N/A

16. NO. OF ACRES IN LEASE

880

19. PROPOSED DEPTH

2800'

17. NO. OF ACRES ASSIGNED
TO THIS WELL

40

20. ROTARY OR CABLE TOOLS

Cable Tool

21. ELEVATIONS (Show whether DF, RT, GR, etc.)

3601 GL

22. APPROX. DATE WORK WILL START*

October 10, 1985

23. PROPOSED CASING AND CEMENTING PROGRAM

SIZE OF HOLE	SIZE OF CASING	WEIGHT PER FOOT	SETTING DEPTH	QUANTITY OF CEMENT
12 1/4"	8 5/8"	24#	350'	300 Sx "C" Circulated
7 7/8"	4 1/2"	10.5#	2800'	250 Sx "C"

Propose to drill to the San Andres in order to test the Grayburg and San Andres formations. If production is indicated, will run 4 1/2" casing and attempt completion.

Mud Program: None, except that for standard Cable Tool drilling method.

BOP Program: No BOP will be used. The standard Cable Tool control head will be used.

IN ABOVE SPACE DESCRIBE PROPOSED PROGRAM: If proposal is to deepen or plug back, give data on present productive zone and proposed new productive zone. If proposal is to drill or deepen directionally, give pertinent data on subsurface locations and measured and true vertical depths. Give blowout preventer program, if any.

24.

SIGNED

George R. Smith

TITLE

Agent for:
McClellan Oil Corporation

DATE

Sept. 12, 1985

(This space for Federal or State office use)

PERMIT NO.

APPROVAL DATE

ED BY

TITLE

DATE

NS OF APPROVAL, IF ANY:

APPROVAL SUBJECT TO
GENERAL REQUIREMENTS AND
SPECIAL STIPULATIONS
ATTACHED

All distances must be from the outer boundaries of the Section.

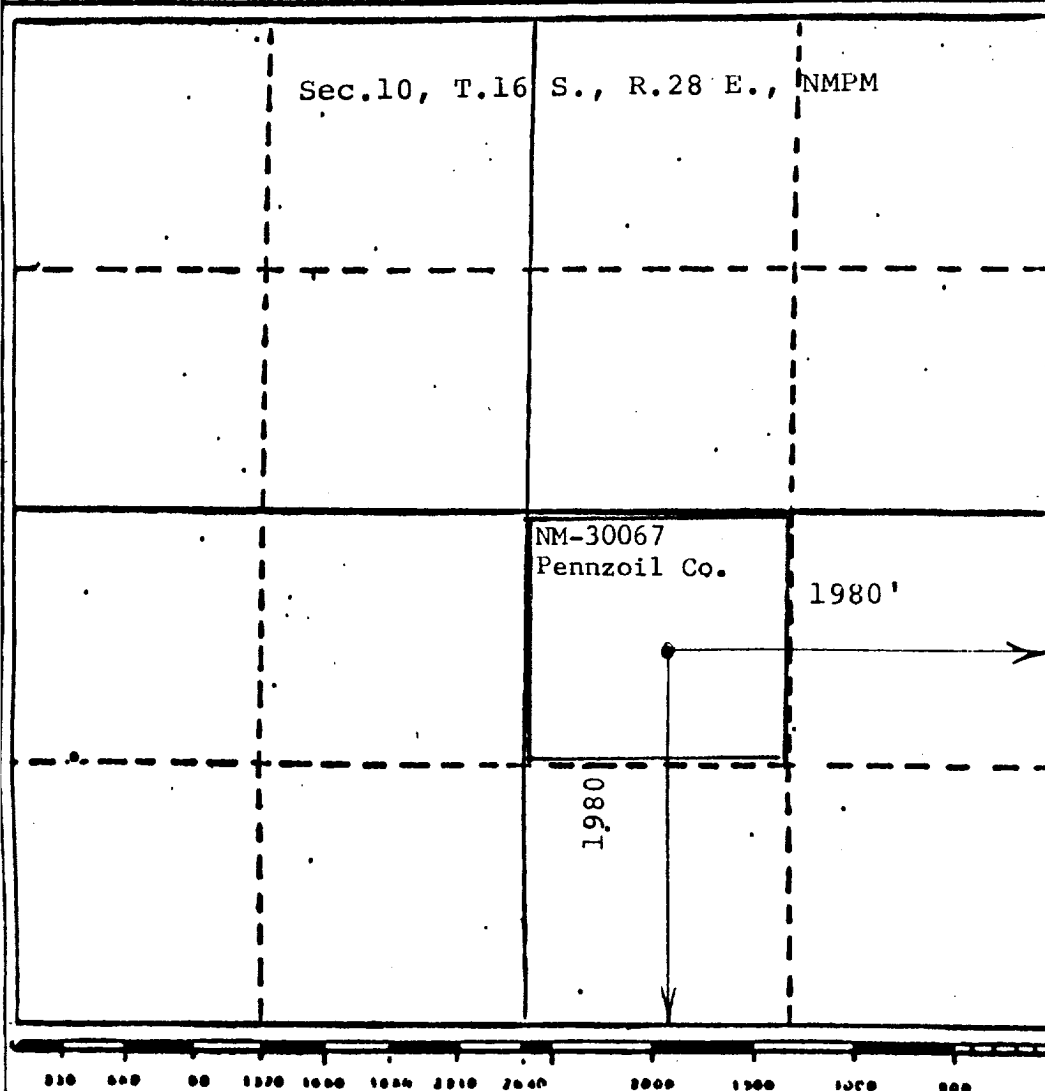
Operator McClellan Oil Corp.		Lease Sara Federal		Well No. #1
Unit Lease J	Section 10	Township 16 South	Range 28 East	County Eddy
Actual Footage Location of Well 1980 feet from the South line and 1980 feet from the East line				
Ground Level Elev. 3601	Producing Formation Grayburg - Queen	Pool Wildcat	Dedicated Acreage 40' Acres	

1. Outline the acreage dedicated to the subject well by colored pencil or hatchure marks on the plat below.
2. If more than one lease is dedicated to the well, outline each and identify the ownership thereof (both as to working interest and royalty).
3. If more than one lease of different ownership is dedicated to the well, have the interests of all owners been consolidated by communitization, unitization, force-pooling, etc?

☐ Yes ☐ No If answer is "yes;" type of consolidation _____

If answer is "no," list the owners and tract descriptions which have actually been consolidated. (Use reverse side of this form if necessary.) _____

No allowable will be assigned to the well until all interests have been consolidated (by communitization, unitization, forced-pooling, or otherwise) or until a non-standard unit, eliminating such interests, has been approved by the Division



CERTIFICATION

I hereby certify that the information contained herein is true and complete to the best of my knowledge and belief.

George R. Smith

Name
George R. Smith

Position
Agent For:

Company
McClellan Oil Corporation

Date
September 6, 1985

I hereby certify that the well location shown on this plat was plotted from field notes of actual surveys made by me or under my supervision, and that the same is true and correct to the best of my knowledge and belief.

W. D. JACQUES
Date of Survey **Sept. 1985**
Mentored by **W. D. Jacques**
and/or Land Surveyor
W. D. Jacques P.E. & L.S.
Certificate No. **6290**



PREVENTERS

SHAFFER MECHANICAL CONTROL GATES

(Patented)

PARTS FOR TYPE 45 SINGLE GATES

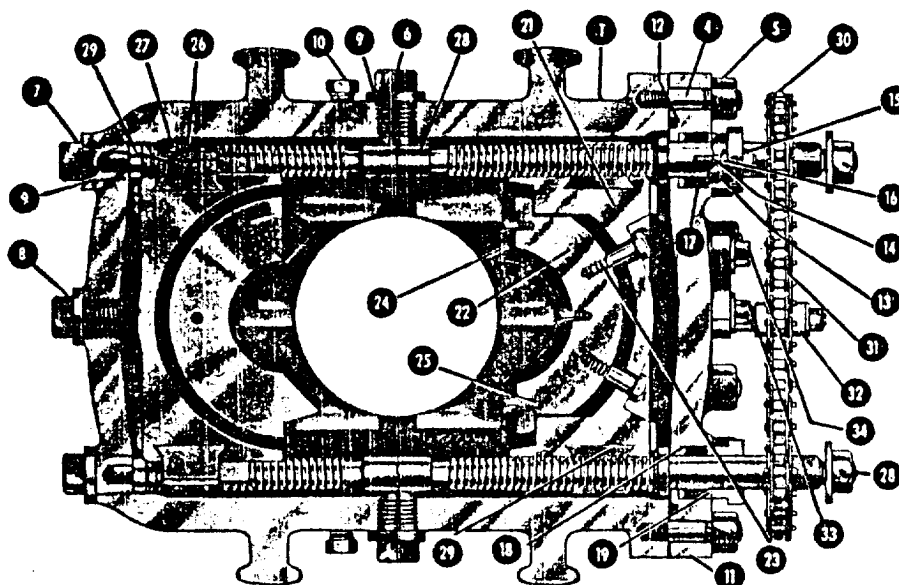


Fig. 84

Shaffer Type 45 Mechanical Single Control Gate—Top View

Part No.	No. Req'd.	NAME OF PART	Part No.	No. Req'd.	NAME OF PART	Part No.	No. Req'd.	NAME OF PART
1	1	Body	15	4	Stuffing Box Gland Stud Nut	26	8	Ram Clip
2	Varies	Body Flange Stud (Not Shown)	16	4	Stuffing Box Gland Jam Nut	27	16	Ram Clip Cap Screw
3	Varies	Body Flange Stud Nut (Not Shown)	17	2 Sets	Stuffing Box Packing (Chevron)	28	2	Operating Screw with Nut
4	Varies	Body End Cover Stud	18	2	Stuffing Box Bronze Packing Ring —Bottom	29	2 R.H. & 2 L.H.	Bronze Half Nut
5	Varies	Body End Cover Stud Nut	19	2	Stuffing Box Bronze Packing Ring —Top	30	2	Sprocket
6	2	Side Plug	20	2	Flange (Not Shown)	31	1	Sprocket Chain (length varies)
7	2	End Bearing Plug	21	1 Set	Ram Block Holder	32	1	Sprocket Chain Tightener
8	1	End Center Plug	22	1 Set	Ram Block (Pipe or Complete Shut-Off)	33	1	Screw with Ratchet Washer for Chain Tightener
9	5	Copper Gasket for Side and End Plug	23	4	Ram Block Retracting Screw	34	1	Screw with Plain Washer for Chain Tightener
10	2	Washout Plug	24	1 Set	Ram Rubber (Pipe or Complete Shut-Off)	35	1	Sprocket Chain Guard (Not Shown)
11	1	End Cover	25	Varies	Ram Rubber Retaining Screw	36	2	Cap Screw with Washer for Chain Guard (Not Shown)
12	1	Hydraulic Packing for End Cover (Earlier Gates use Metal Gasket)						
13	2	Stuffing Box Gland						
14	4	Stuffing Box Gland Stud						

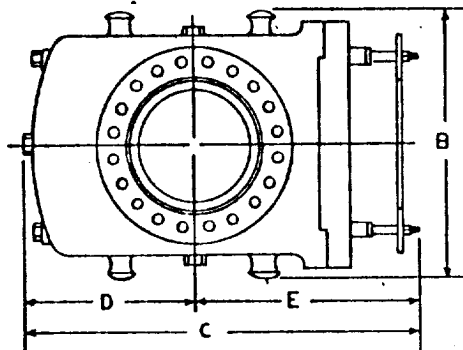


Fig. 85

Dimensional Plan—Shaffer Type 45 Mechanical Single Control Gate

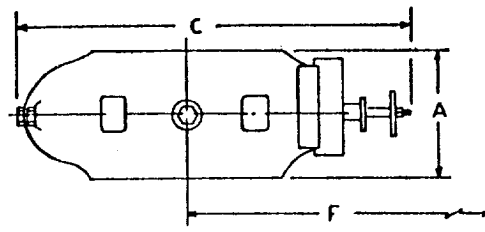


Fig. 86

Dimensional Elevation—Shaffer Type 45 Mechanical Single Control Gate

DIMENSIONAL AND ENGINEERING DATA ON SHAFFER TYPE 45 MECHANICAL SINGLE CONTROL GATES

Size	Max. Service Pressure Rating, psi	Test Pressure, psi	Vertical Bore	Approx. Weight, Pounds	Ram Size	A Height	B Width	C Length	D Center To Rear	E Center To Front	F Max. Distance Needed To Change Rams
6"	3,000	6,000	7 1/4"	1,500	C.S.O. Thru 5" O.D.	14"	27 1/2"	34"	13 1/2"	20 1/2"	41 1/2"
8"	3,000	6,000	9"	2,050	C.S.O. Thru 7" O.D.	15 1/2"	29 1/2"	40"	16 1/2"	23 1/4"	49 1/4"
10"	3,000	6,000	11"	2,580	C.S.O. Thru 8 3/4" O.D.	16 1/2"	32"				
12"	3,000	6,000	12 1/2"	3,345	C.S.O. Thru 10 1/2" O.D.	17 1/2"	33 1/4"				
16"	2,000	3,000	15 1/4"	4,290	C.S.O. Thru 13 1/4" O.D.	17"	37"				

EXHIBIT "E"

McCLELLAN OIL CORPORATION
Sara Federal, Well No. 1
Cable Tool Control Gate

McCLELLAN OIL CORPORATION
Sara Federal, Well No. 1
1980' FSL & 1980' FEL, Sec. 10-T16S-R28E
Eddy County, New Mexico
Lease No.: NM-30067
(Exploratory Well)

1. The geologic surface formation is recent Permian with quaternary alluvium and other surficial deposits.
2. The estimated tops of geologic markers are as follows:

10. Anticipated starting date: October 10, 1985.
Anticipated completion of drilling operations: Approximately 30 days.

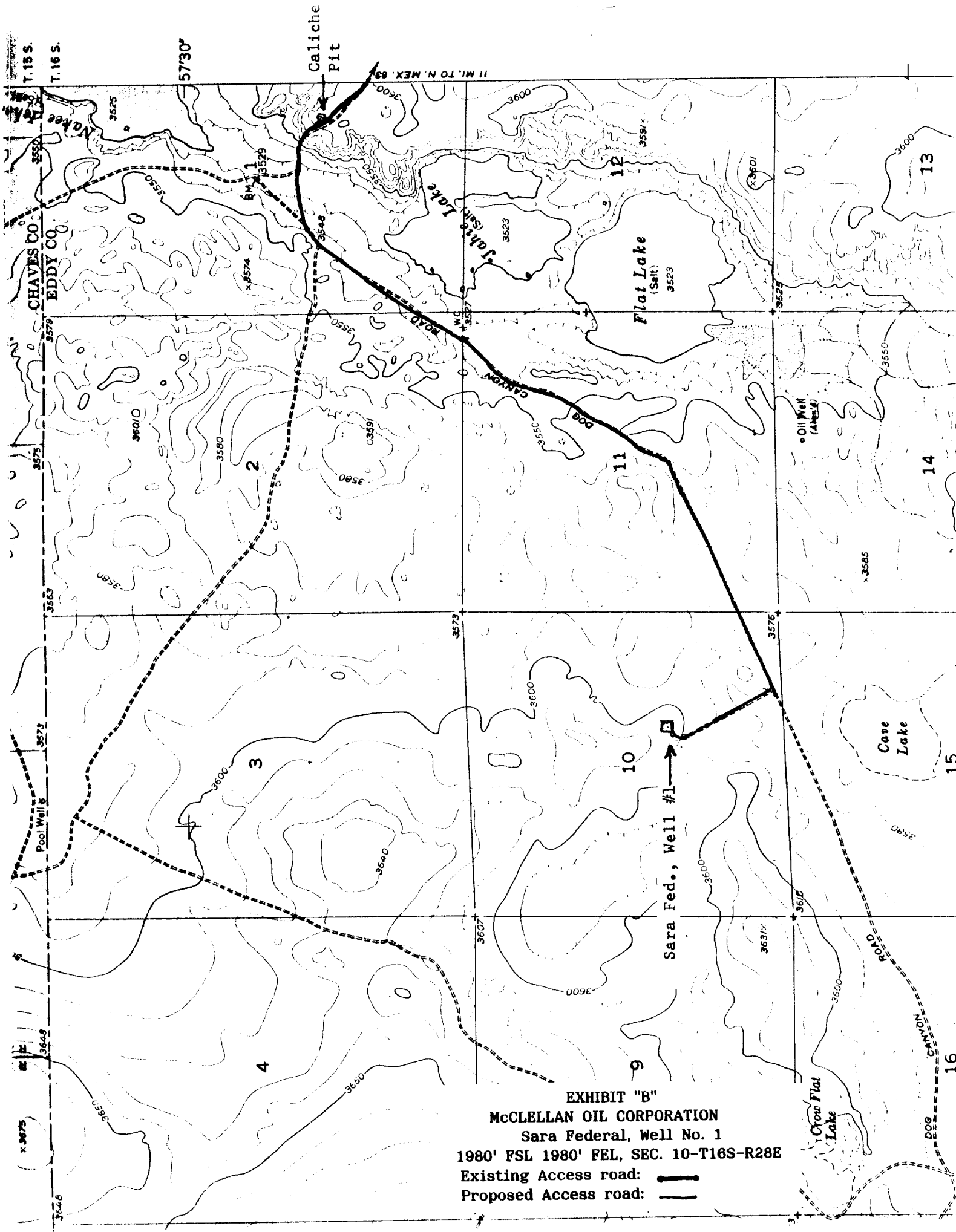


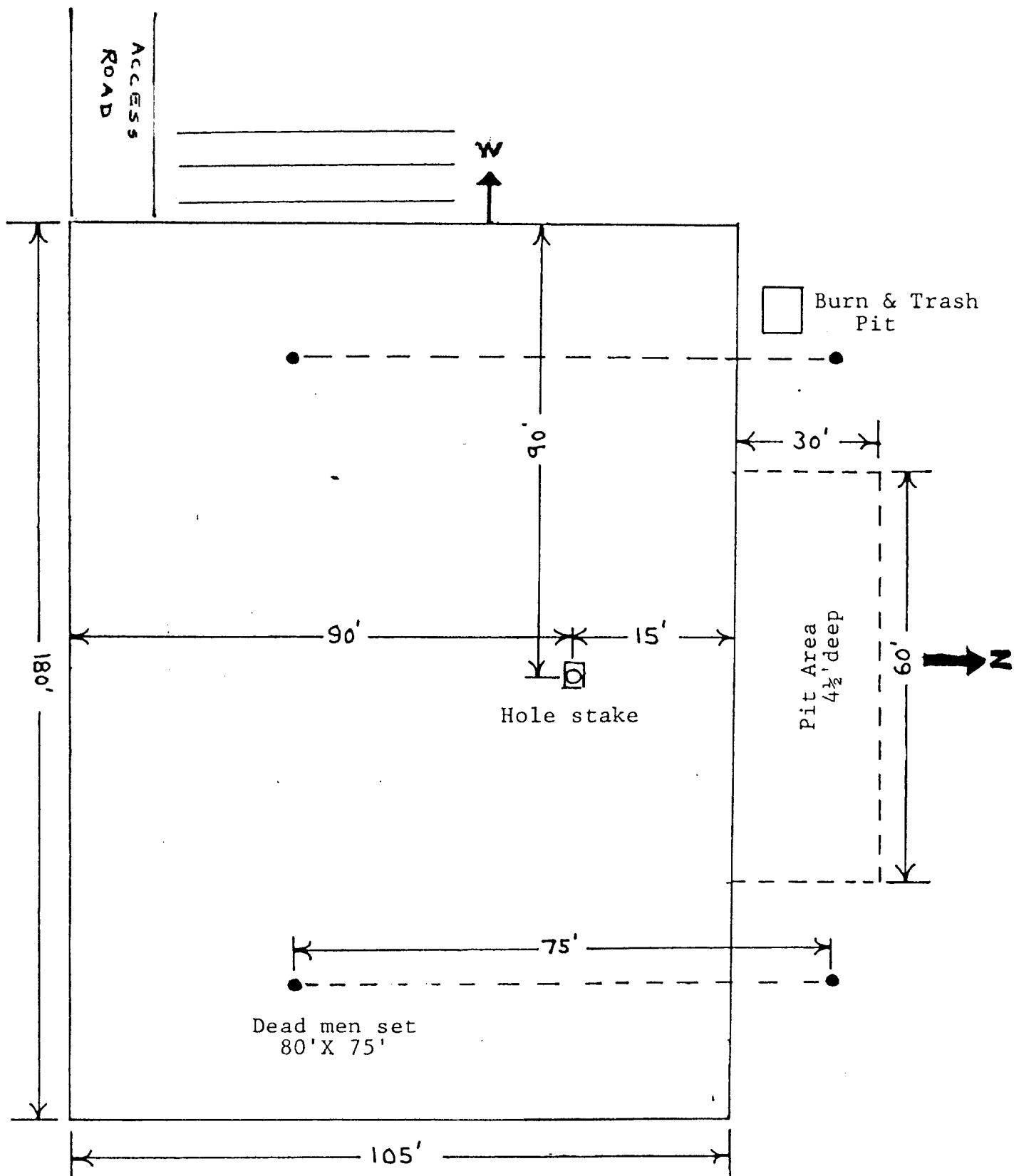


EXHIBIT "B"
 McCLELLAN OIL CORPORATION
 Sara Federal, Well No. 1
 1980' FSL 1980' FEL, SEC. 10-T16S-R28E
 Existing Access road: 
 Proposed Access road: 



CABLE TOOL LOCATION PLAT

EXHIBIT "D"
 McCLELLAN OIL CORPORATION
 Sara Federal, Well No. 1
 Rig Layout