

UNITED STATES DEPARTMENT OF THE INTERIOR
GEOLOGICAL SURVEY
Artesia, NM 88210

APPLICATION FOR PERMIT TO DRILL, DEEPEN, OR PLUG BACK

1a. TYPE OF WORK

DRILL ☒DEEPEN ☐PLUG BACK ☐

b. TYPE OF WELL

OIL
WELL ☒GAS
WELL ☐OTHER ☐

2. NAME OF OPERATOR

Metex Pipe & Supply

3. ADDRESS OF OPERATOR

2407 Sierra Vista Rd. Artesia, New Mexico 88210

4. LOCATION OF WELL (Report location clearly and in accordance with any State requirements.)

At surface
2310' FSL & 2310' FEL

At proposed prod. zone

14. DISTANCE IN MILES AND DIRECTION FROM NEAREST TOWN OR POST OFFICE*

8 miles North West of Maljamar New Mexico

15. DISTANCE FROM PROPOSED*

LOCATION TO NEAREST
PROPERTY OR LEASE LINE, FT.
(Also to nearest drig. unit line, if any)

18. DISTANCE FROM PROPOSED LOCATION*

TO NEAREST WELL, DRILLING, COMPLETED,
OR APPLIED FOR, ON THIS LEASE, FT.

660'

21. ELEVATIONS (Show whether DF, RT, GR, etc.)

4156.5 GL

23.

PROPOSED CASING AND CEMENTING PROGRAM

SIZE OF HOLE	SIZE OF CASING	WEIGHT PER FOOT	SETTING DEPTH	QUANTITY OF CEMENT
12 1/4"	8 5/8"	24#	300'	CIRCULATE
7 7/8"	5 1/2"	17#	3800'	550 sx.

Propose to drill 12 1/4" hole to 300 ft., and set 8 5/8" casing and circulate cement. A Cameron 11" BOP, 5000 #, will be tested with rams closed and surface pipe tested prior to drilling out. Drilling mud will be Freshwater Gel with viscosity of approximately 34. Logs will be Sidewall Neutron Porosity and Dual Lateral Log Micro SFL. No testing will be done until after pipe has been cemented and well fractured. There have been no abnormal pressures, waterflows, or H₂S encountered in this area.

IN ABOVE SPACE DESCRIBE PROPOSED PROGRAM: If proposal is to deepen or plug back, give data on present productive zone and proposed new productive zone. If proposal is to drill or deepen directionally, give pertinent data on subsurface locations and measured and true vertical depths. Give blowout preventer program, if any.

24.

SIGNED

Martin B. Mung

d/b/a Metex Pipe & Supply

TITLE

DATE

October 4, 1985

(This space for Federal or State office use)

PERMIT NO.

APPROVAL DATE

APPROVED BY

TITLE

DATE

10-11-85

CONDITIONS OF APPROVAL, IF ANY:

*See Instructions On Reverse Side

APPROVAL SUBJECT TO
GENERAL REQUIREMENTS AND
SPECIAL STIPULATIONS

NEW MEXICO OIL CONSERVATION COMMISSION
WELL LOCATION AND ACREAGE DEDICATION PLAT

Form C-102
Superseded C-128
Effective 1-1-65

All distances must be from the outer boundaries of the Section

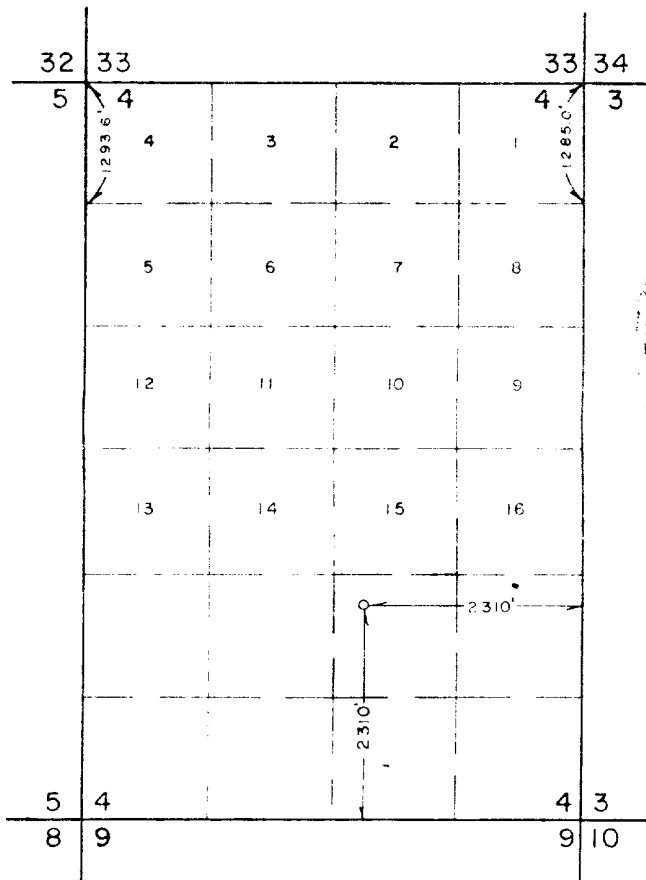
Operator METEX PIPE & SUPPLY		Lease RONADERO FED.		Well No. 4
Unit Letter R	Section 4	Township 16 SOUTH	Range 31 EAST	County DEDDY
Actual Footage Location of Well: 2310 feet from the SOUTH line and 2310 feet from the EAST line				
Ground Level Elev. 4156.5'	Producing Formation SAN ANDRES	Pool North Square lake	Dedicated Acreage: 40 Acres	

- Outline the acreage dedicated to the subject well by colored pencil or hatchure marks on the plat below.
- If more than one lease is dedicated to the well, outline each and identify the ownership thereof (both as to working interest and royalty).
- If more than one lease of different ownership is dedicated to the well, have the interests of all owners been consolidated by communitization, unitization, force-pooling, etc?

☐ Yes ☐ No If answer is "yes," type of consolidation _____

If answer is "no," list the owners and tract descriptions which have actually been consolidated (Use reverse side of this form if necessary.) _____

No allowable will be assigned to the well until all interests have been consolidated (by communitization, unitization, forced-pooling, or otherwise) or until a non-standard unit, eliminating such interests, has been approved by the Commission.



SCALE: 1" = 2,000'

CERTIFICATION

I hereby certify that the information contained herein is true and complete to the best of my knowledge and belief.

Name
MARTIN B. MUNCY
Position
OWNER
Signature
Metex Pipe & Supply
Date
10-4-85

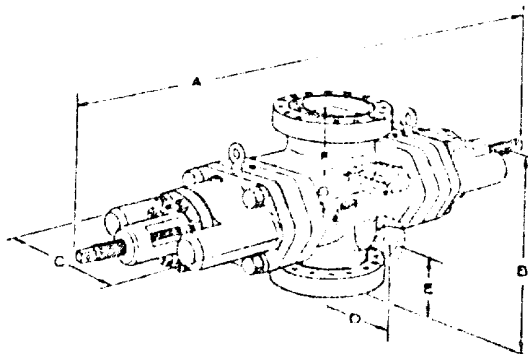
I hereby certify that the well location shown on this plat was plotted from field notes of actual surveys made by me or under my supervision, and that the same is true and correct to the best of my knowledge and belief.

Date Surveyed
SEPTEMBER 19, 1985

Registered Professional Engineer and/or Land Surveyor

Signature
John W. West
Certificate No. JOHN W. WEST 676
Ronald J. Eidson 3239

U BLOWOUT PREVENTER ENGINEERING DATA



Single Open Face Flanged U Blowout Preventer

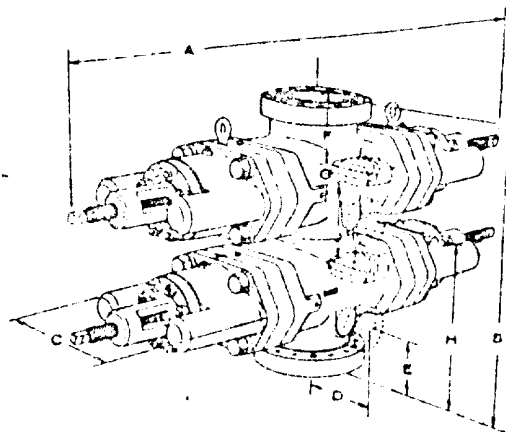
Side Outlets to 4" size (7-1/16" on 26-3/4" preventers) can be provided beneath each set of rams, on either or both sides of U preventers. Side outlet flanges are open face and have the same pressure rating as the vertical run flanges. Valve removal preparations can be provided. To obtain a quotation, the number and size of outlets should be specified.

Flanges conform to API Standard 6A. Type 6BX flanges are standard for 10,000 psi, 15,000 psi, and 20,000 psi working pressures and for 5000 psi working pressures for 13-5/8" and larger bore preventers.

Although most preventers have open face flanges or Cameron clamp hubs, preventers with studed flanges can be furnished.

Sizes and Dimensions are in inches. The over-all length "A" given in the tables does not include the optional wedgelocks. No spacers between rams are included in the table of dimensions of double ram models. Preventers with spacers to clear tool joints can be obtained on special order. For information on preventers with spacers, or sizes not listed, consult your Cameron representative.

Hydraulic Control Connections to operate rams and bonnets are 1" NPT. There are two connections for each set of rams. Hydraulic ram lock connections are 1/2" NPT.



Double Open Face Flanged U Blowout Preventer

Engineering Data Designations. See Charts on Following Page

- A-1 Over-all length, bonnets closed, locking screws locked
- A-2 Over-all length, ram change, bonnets opened, locking screws unlocked
- B-1 Over-all height flanged
- B-2 As above, with Cameron clamp hubs
- C Over-all width without side outlets (max width)
- D Centerline of preventer to outlet flange or hub face. Distance is variable.
- E-1 Centerline of side outlet (outlet below lower rams in double model) to bottom flange face
- E-2 As above, to bottom hub face
- F-1 Top of upper ram to top flange face
- F-2 As above, to top hub face
- G Ram height
- H-1 Centerline of side outlet between rams to bottom flange face
- H-2 As above, to bottom hub face
- J Top of lower ram to bottom of upper ram

Metex Pipe and Supply
 Ronadero Federal #4-
 11" 5000# double

APPLICATION FOR DRILLING

METEX PIPE AND SUPPLY

Ronadero Federal, Well #4

In conjunction with form 9-331c, Application for Permit to Drill subject well, Metex Pipe and Supply submits the following items of pertinent information in accordance with MMS/BLM.

1. The geologic surface formation is quaternary.
2. The estimated tops of geologic markers are as follows:
Base salt-----1800'
Yates-----1960'
Queen-----2780
Grayburg-----3160
Premier-----3450
SanAndres-----3510
3. The estimated depth at which anticipated water, oil or gas formations are expected to encountered.

Water: Possible in random sands from surface to 200 ft.
Oil: Grayburg, SanAndres, at depths listed in item 2.
4. Proposed casing program: See Form 9-331c.
5. Pressure control equipment: See form 9-331c Exhibit E.
6. Drill mud: Surface to 300' Fresh water and native mud.
300' to TD brine water and gel.
7. Testing, Logging and Coring.
DST: None planned
Logging: Gr/SNP, DLL/RXO TD to 300'
CCL/CBL TD to surface.
Coring: None planned
8. No abnormal pressures or temperatures are anticipated.
9. Anticipated starting date: As soon as possible.

EXHIBIT A

Matex Pipe &

Supply

Roadwork

Vol. #4

