

N. M. LAND COMMISSION
P. O. BOX 1980
HOBBS, NEW MEXICO 88240
UNITED STATES
DEPARTMENT OF THE INTERIOR
GEOLOGICAL SURVEYSUBMIT IN TRIPLICATE*
(Other instructions on
reverse side)Form approved,
Budget Bureau No. 42-R1425.

30-015-25449

APPLICATION FOR PERMIT TO DRILL, DEEPEN, OR PLUG BACK

1a. TYPE OF WORK
DRILL ☒ DEEPEN ☐ PLUG BACK ☐b. TYPE OF WELL
OIL WELL ☒ GAS WELL ☐ OTHER ☐
SINGLE ZONE ☐ MULTIPLE ZONE ☐

2. NAME OF OPERATOR

McClellan Oil Corporation ✓

3. ADDRESS OF OPERATOR

P.O. Drawer 730, Roswell, NM 88202

4. LOCATION OF WELL (Report location clearly and in accordance with any State requirements*)

At surface

330' FNL & 990' FEL

At proposed prod. zone

same

14. DISTANCE IN MILES AND DIRECTION FROM NEAREST TOWN OR POST OFFICE*

19 miles north of Loco Hills

15. DISTANCE FROM PROPOSED*
LOCATION TO NEAREST
PROPERTY OR LEASE LINE, FT.
(Also to nearest drlg. unit line, if any)

330'

16. NO. OF ACRES IN LEASE

280

17. NO. OF ACRES ASSIGNED
TO THIS WELL

40

18. DISTANCE FROM PROPOSED LOCATION*
TO NEAREST WELL, DRILLING, COMPLETED,
OR APPLIED FOR, ON THIS LEASE, FT.

NA

19. PROPOSED DEPTH

2000'

20. ROTARY OR CABLE TOOLS

Rotary

21. ELEVATIONS (Show whether DF, RT, GR, etc.)

3626' G.L.

22. APPROX. DATE WORK WILL START*

Oct. 25, 1985

23.

PROPOSED CASING AND CEMENTING PROGRAM

SIZE OF HOLE	SIZE OF CASING	WEIGHT PER FOOT	SETTING DEPTH	QUANTITY OF CEMENT
12-1/4"	8-5/8"	24#	250'	Circ. - 300 sx "C" + 2% CaCl ₂
7-7/8"	4-1/2"	10.5#	2000'	400 sx "C"

Propose to drill a new well to test the Penrose sand in the Queen formation. Will run 8-5/8" casing to the top of the salt. Will drill with fresh water and mud up with 30 viscosity mud at total depth. If production is indicated, will run 4-1/2" casing and attempt completion.

IN ABOVE SPACE DESCRIBE PROPOSED PROGRAM: If proposal is to deepen or plug back, give data on present productive zone and proposed new productive zone. If proposal is to drill or deepen directionally, give pertinent data on subsurface locations and measured and true vertical depths. Give blowout preventer program, if any.

24.

SIGNED

Mark McClellan

TITLE

Geologist

DATE

10/9/85

(This space for Federal or State office use)

PERMIT NO.

APPROVAL DATE

APPROVED BY

CONDITIONS OF APPROVAL, IF ANY:

TITLE

DATE

*See Instructions On Reverse Side

APPROVAL SUBJECT TO
GENERAL REQUIREMENTS AND
SPECIAL STIPULATIONS
ATTACHED

RECEIVED

001 21 1985

HOBBY'S OFFICE

All distances must be from the outer boundaries of the Section.

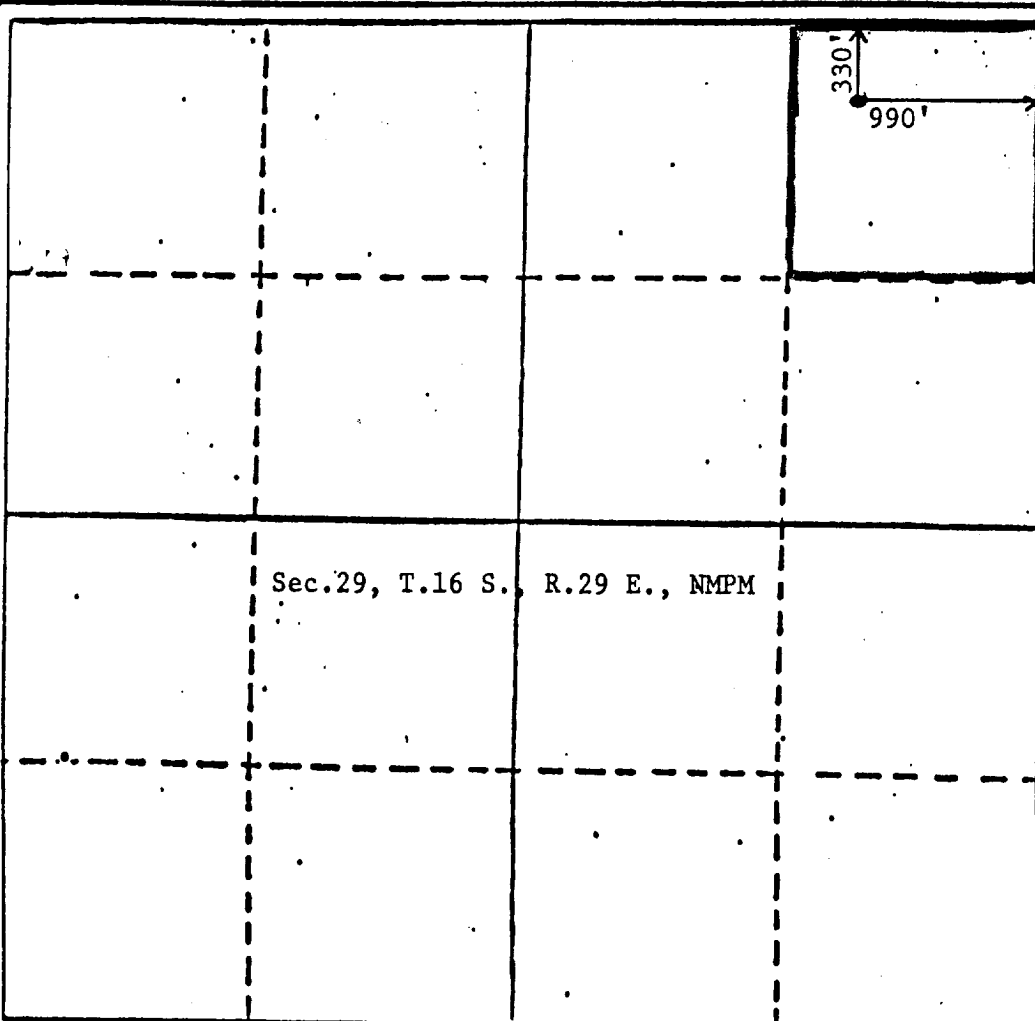
Operator McClellan Oil Corp.		Lease Exxon Federal		Well No. #1
Unit Listed A	Section 29	Township 16 South	Range 29 East	County Eddy
Actual Well Location of Well				
990 feet from the East line and		330 feet from the North line		
Ground Level Elev. 3626	Producing Formation Queen	Pool High Lonesome	Dedicated Acreage 40	

1. Outline the acreage dedicated to the subject well by colored pencil or hatchure marks on the plat below.
2. If more than one lease is dedicated to the well, outline each and identify the ownership thereof (both as to working interest and royalty).
3. If more than one lease of different ownership is dedicated to the well, have the interests of all owners been consolidated by communitization, unitization, force-pooling, etc?

☐ Yes ☐ No If answer is "yes," type of consolidation _____

If answer is "no," list the owners and tract descriptions which have actually been consolidated. (Use reverse side of this form if necessary.) _____

No allowable will be assigned to the well until all interests have been consolidated (by communitization, unitization, forced-pooling, or otherwise) or until a non-standard unit, eliminating such interests, has been approved by the Division



CERTIFICATION

I hereby certify that the information contained herein is true and complete to the best of my knowledge and belief.

Mark McClellan

Name

Mark McClellan

Position

Geologist

Company

McClellan Oil Corp.

Date

10/7/85

I hereby certify that the well location shown on this plat was plotted from field notes of actual surveys made by me or under my supervision, and that the same is true and correct to the best of my knowledge and belief.

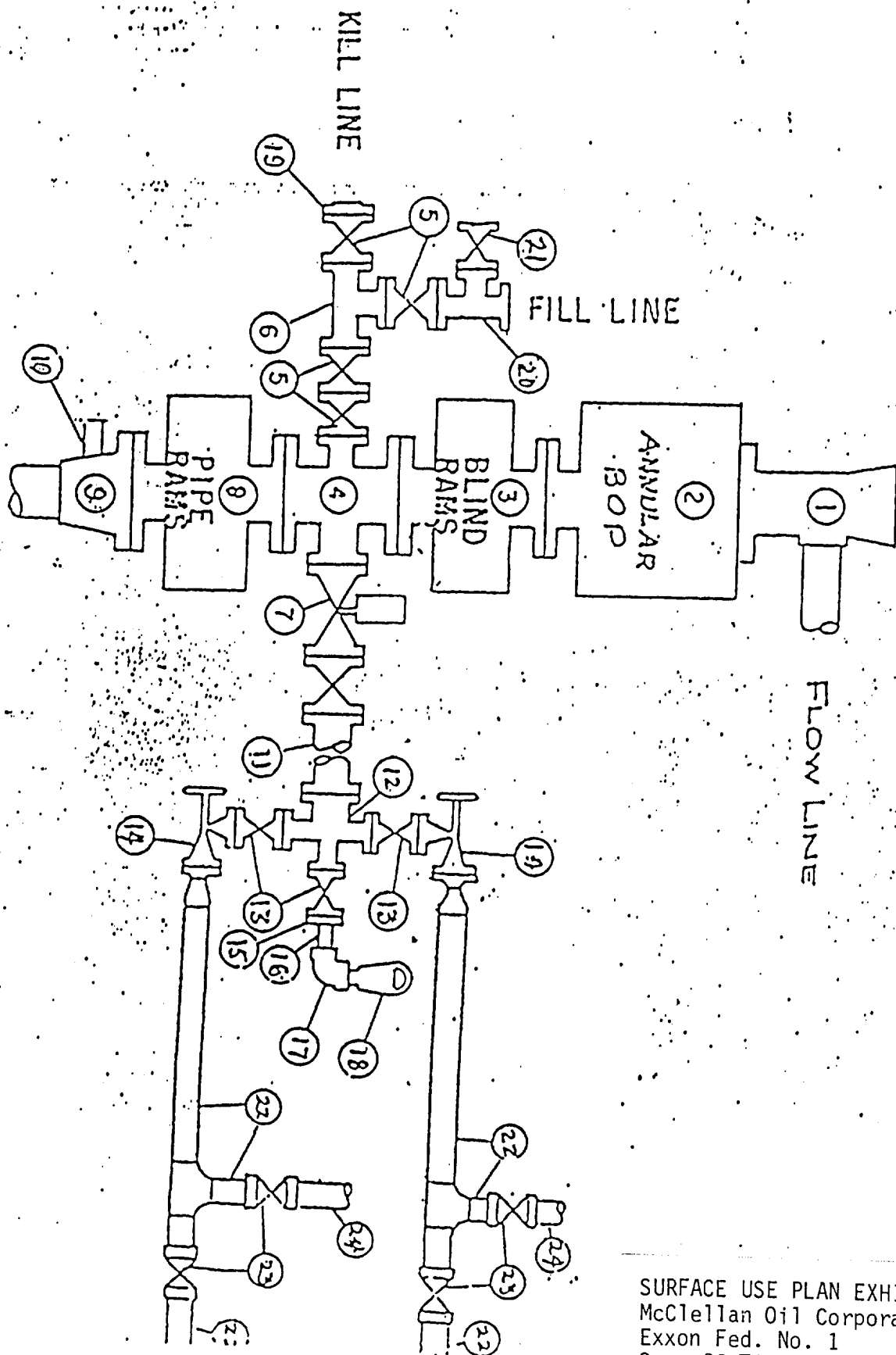
Date Surveyed

October

NEW MEXICO
1985
Registered Professional Engineer
and/or Land SurveyorProfessional Engineer
L. & L.S.

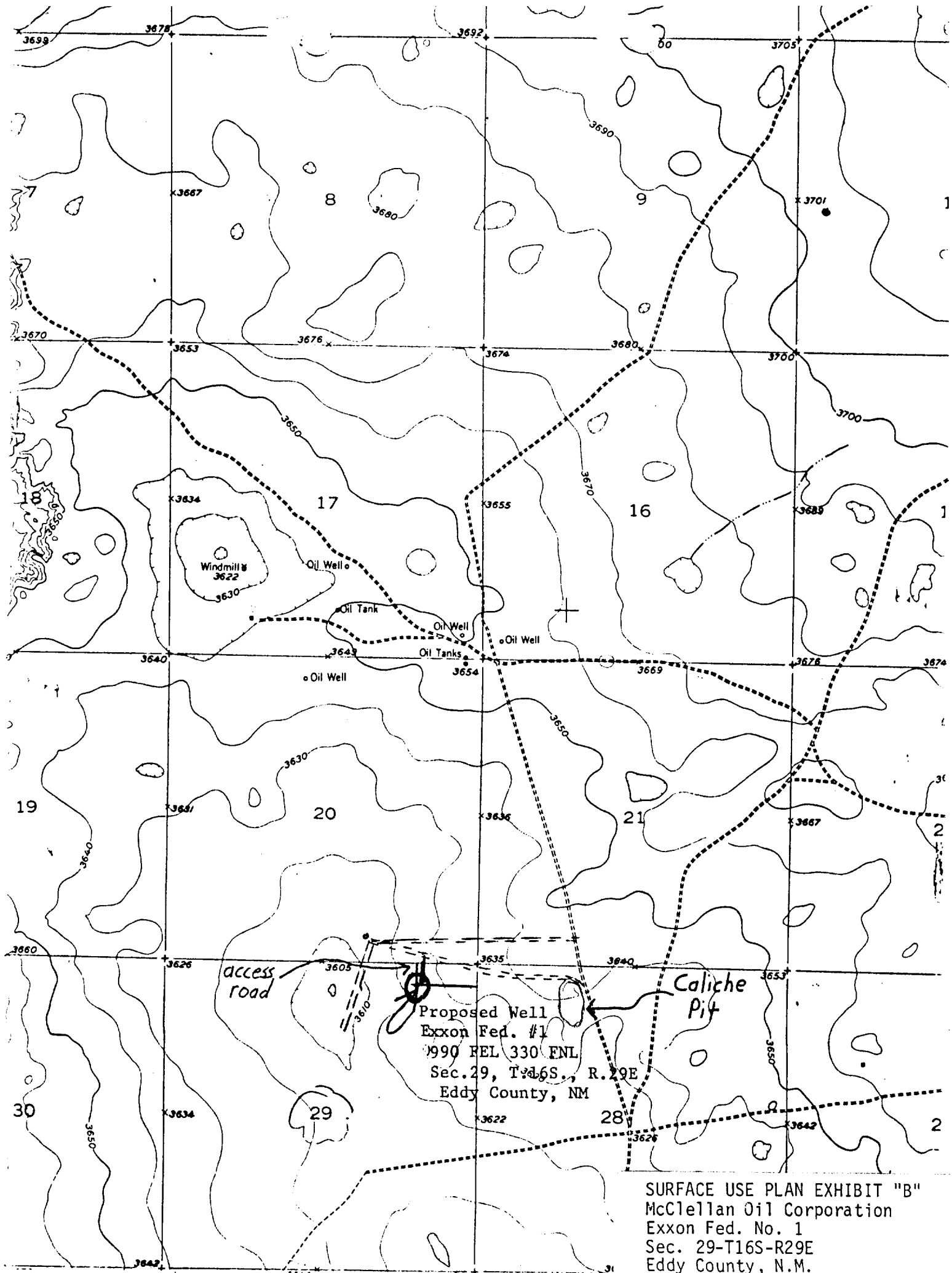
Certificate No. 6290

RECEIVED
OCT 21 1985
O.C.D.
HIGHERS OFFICE



SURFACE USE PLAN EXHIBIT "E"
 McClellan Oil Corporation
 Exxon Fed. No. 1
 Sec. 29-T16S-R29E
 Eddy County, N.M.

RECEIVED
OCT 21 1985
OFFICE
HONORARY



SURFACE USE PLAN EXHIBIT "B"
McClellan Oil Corporation
Exxon Fed. No. 1
Sec. 29-T16S-R29E
Eddy County, N.M.

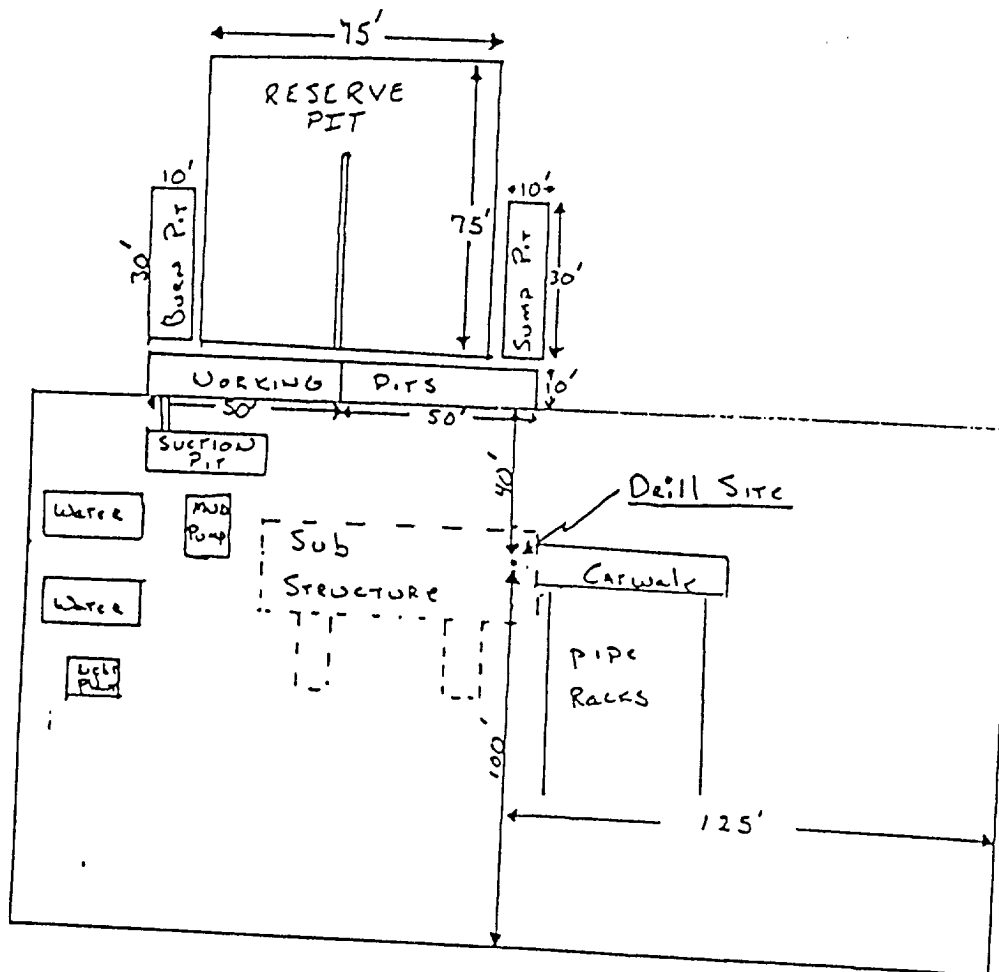
RECEIVED
OCT 21 1985
S. C. D.
HOURS OFFICE

McCLELLAN OIL CORPORATION
SUGGESTED PAD DIMENSIONS

Reserve Pits 4 ft. deep, plastic lined

Working pits 5 ft. deep

No cellar



Scale 1" = 50'

RECEIVED
OCT 21 1985
HUBBARD OFFICE