

OIL CONSERVATION DIVISION

STATE OF NEW MEXICO
ENERGY AND MINERALS DEPARTMENT

P. O. BOX 2088
SANTA FE, NEW MEXICO 87501

Form C-102
Revised 10-1-78

All distances must be from the outer boundaries of the Section.

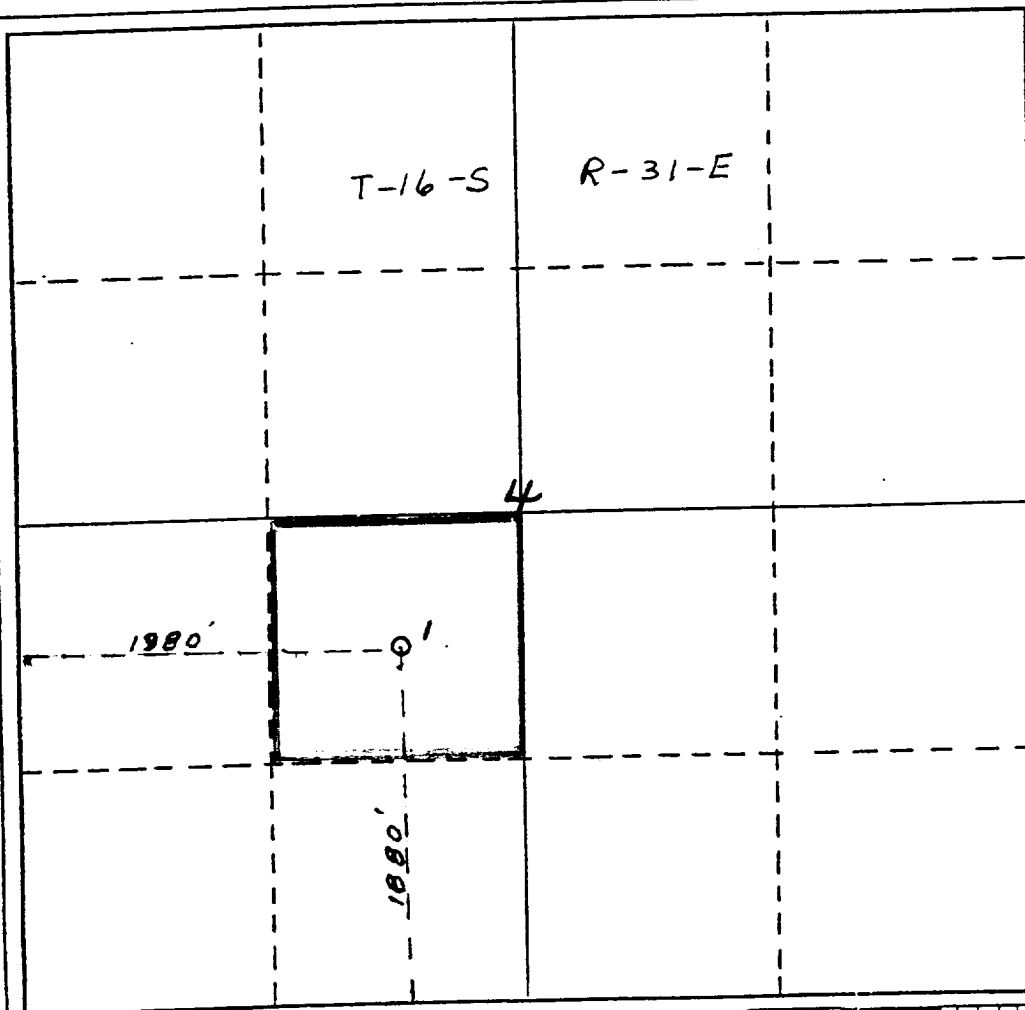
| | | | | | |
|--|---------------------------------------|---------------------------|--------------------------------------|-----------------------|---------------------------------------|
| Operator Mobil Producing Texas & New Mexico, Inc. | | | Lease Federal "C" Sec 4 | | Well No. 1 |
| Unit Letter K | Section 4 | Township T-16-S | Range R-31-E | County Eddy | |
| Actual Footage Location of Well: 1980 feet from the West line and 1880 feet from the South line | | | | | |
| Ground Level Elev. 4136 | Producing Formation Premier | | Pool Northeast Square Lake | | Dedicated Acreage: 40 Acres |

1. Outline the acreage dedicated to the subject well by colored pencil or hachure marks on the plat below.
2. If more than one lease is dedicated to the well, outline each and identify the ownership thereof (both as to working interest and royalty).
3. If more than one lease of different ownership is dedicated to the well, have the interests of all owners been consolidated by communitization, unitization, force-pooling, etc?

☐ Yes ☐ No If answer is "yes," type of consolidation _____

If answer is "no," list the owners and tract descriptions which have actually been consolidated. (Use reverse side of this form if necessary.) _____

No allowable will be assigned to the well until all interests have been consolidated (by communitization, unitization, forced-pooling, or otherwise) or until a non-standard unit, eliminating such interests, has been approved by the Division.



CERTIFICATION

I hereby certify that the information contained herein is true and complete to the best of my knowledge and belief.

C.A. Moore for

Name

G.E. Tate

Position

Env. & Reg. Manager

Company

Mobil Producing Tx. & NM, Inc.

Date

October 16, 1985

I hereby certify that the well location shown on this plat was plotted from field notes of actual surveys made by me or under my supervision, and that the same is true and correct to the best of my knowledge and belief.

H.A. CARSON Jr

Date Surveyed

10-2-85

Registered Professional Engineer and/or Land Surveyor

H.A. CARSON Jr

Certificate No.

5063