

Drawer DD
Artesia, NM 88210
RECEIVED BY
NOV 22 1985
UNITED STATES
DEPARTMENT OF THE INTERIOR
GEOLOGICAL SURVEY

SUBMIT TRIPLICATE*
(Other instructions on
reverse side)

Form approved.
Budget Bureau No. 42-R1423.

30-015-25495

APPLICATION FOR PERMIT TO DRILL, DEEPEN, OR PLUG BACK

1A. TYPE OF WORK
ARTESIA, OFFICE
DRILL ☒ DEEPEN ☐ PLUG BACK ☐

B. TYPE OF WELL
OIL WELL ☒ GAS WELL ☐ OTHER ☐
SINGLE ZONE ☐ MULTIPLE ZONE ☐

2. NAME OF OPERATOR
McClellan Oil Corporation

3. ADDRESS OF OPERATOR
P.O. Drawer 730, Roswell, NM 88202

4. LOCATION OF WELL (Report location clearly and in accordance with any State requirements.)*
At surface 1650' FNL & 330' FWL
At proposed prod. zone ut. E

14. DISTANCE IN MILES AND DIRECTION FROM NEAREST TOWN OR POST OFFICE*
20 miles northwest of Loco Hills, N.M.

15. DISTANCE FROM PROPOSED*
LOCATION TO NEAREST
PROPERTY OR LEASE LINE, FT.
(Also to nearest drlg. unit line, if any) 330'

18. DISTANCE FROM PROPOSED LOCATION*
TO NEAREST WELL, DRILLING, COMPLETED,
OR APPLIED FOR, ON THIS LEASE, FT. 1320'

21. ELEVATIONS (Show whether DF, RT, GR, etc.)
3638' G.L.

23. PROPOSED CASING AND CEMENTING PROGRAM

SIZE OF HOLE	SIZE OF CASING	WEIGHT PER FOOT	SETTING DEPTH	QUANTITY OF CEMENT
12-1/4"	8-5/8"	20 lbs.	300'	Circulated-300 sx "C" + 2% CaCl
7-7/8"	5-1/2"	14 lbs.	1925'	400 sx "C"

Propose to drill a well to test the Penrose Sand in the Queen formation. Will run 8-5/8" casing to the top of the salt. Will drill with fresh water and mud up with a 30 viscosity mud at total depth. If production is indicated by logs, will run 5-1/2" casing and attempt completion.

Estimated formation tops: Salt 310' Queen 1538'
Yates 782' Penrose 1773'

Posted IDI
API, NL
11-27-85

IN ABOVE SPACE DESCRIBE PROPOSED PROGRAM: If proposal is to deepen or plug back, give data on present productive zone and proposed new productive zone. If proposal is to drill or deepen directionally, give pertinent data on subsurface locations and measured and true vertical depths. Give blowout preventer program, if any.

24. SIGNED Mark McClellan TITLE Geologist DATE 11/7/85

(This space for Federal or State office use)

PERMIT NO. _____ APPROVAL DATE _____

APPROVED BY _____ TITLE _____ DATE 11-21-85
CONDITIONS OF APPROVAL, IF ANY:

*See Instructions On Reverse Side

APPROVAL SUBJECT TO
GENERAL REQUIREMENTS AND
SPECIAL STIPULATIONS
ATTACHED

All distances must be from the outer boundaries of the Section.

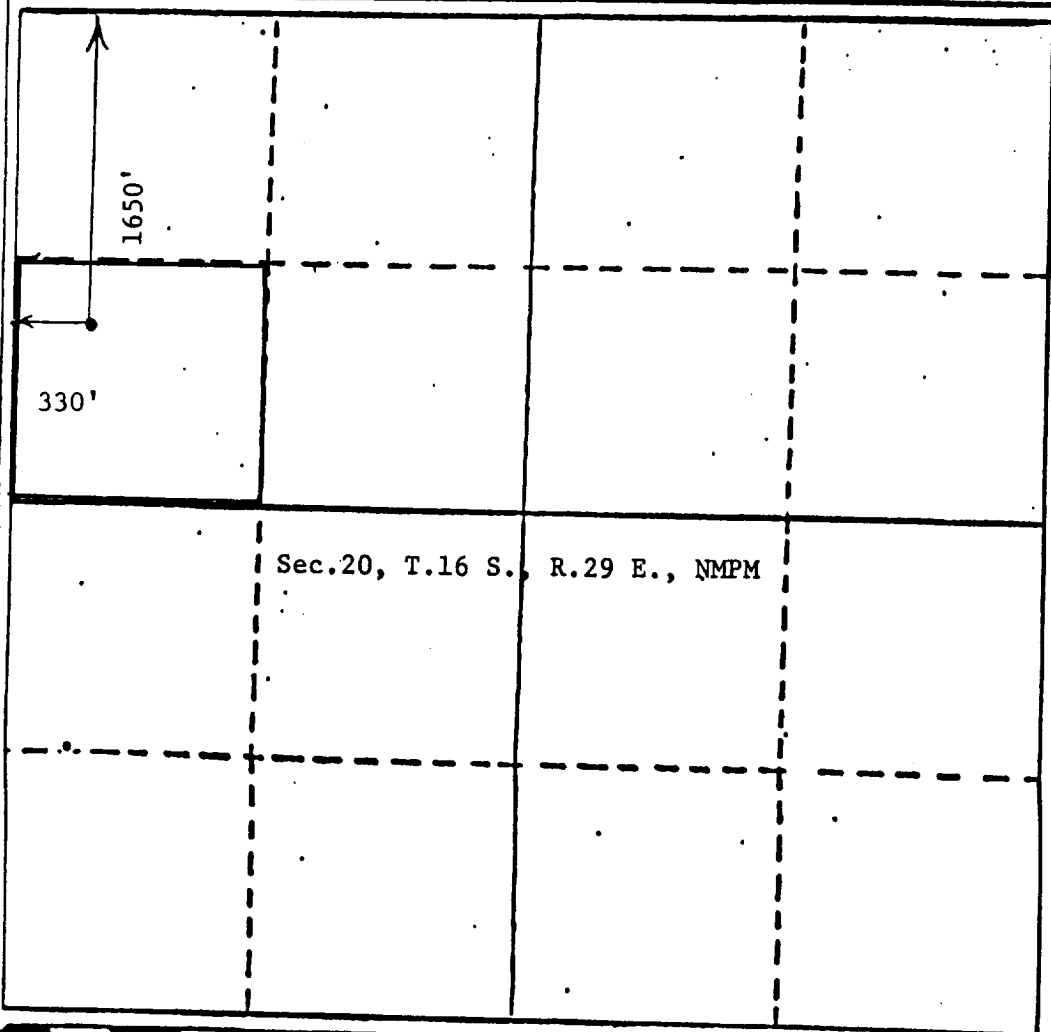
Operator McClellan Oil Corp.			Lease Renee Federal			Well No. #3		
Unit Letter E	Section 20	Township 16 South	Range 29 East	County Eddy				
Actual Well Location of Well								
330 feet from the West.			1650 feet from the North					
Ground Level Elev. 3638	Producing Formation Penrose		Pool High Lonesome <i>Queen</i>			Dedicated Acreage 40		

1. Outline the acreage dedicated to the subject well by colored pencil or hatchure marks on the plat below.
2. If more than one lease is dedicated to the well, outline each and identify the ownership thereof (both as to working interest and royalty).
3. If more than one lease of different ownership is dedicated to the well, have the interests of all owners been consolidated by communitization, unitization, force-pooling, etc?

☐ Yes ☐ No If answer is "yes," type of consolidation _____

If answer is "no," list the owners and tract descriptions which have actually been consolidated. (Use reverse side of this form if necessary.) _____

No allowable will be assigned to the well until all interests have been consolidated (by communitization, unitization, forced-pooling, or otherwise) or until a non-standard unit, eliminating such interests, has been approved by the Division



CERTIFICATION

I hereby certify that the information contained herein is true and complete to the best of my knowledge and belief.

Mark McClellan

Name

Mark McClellan

Position

Geologist

Company

McClellan Oil Corp.

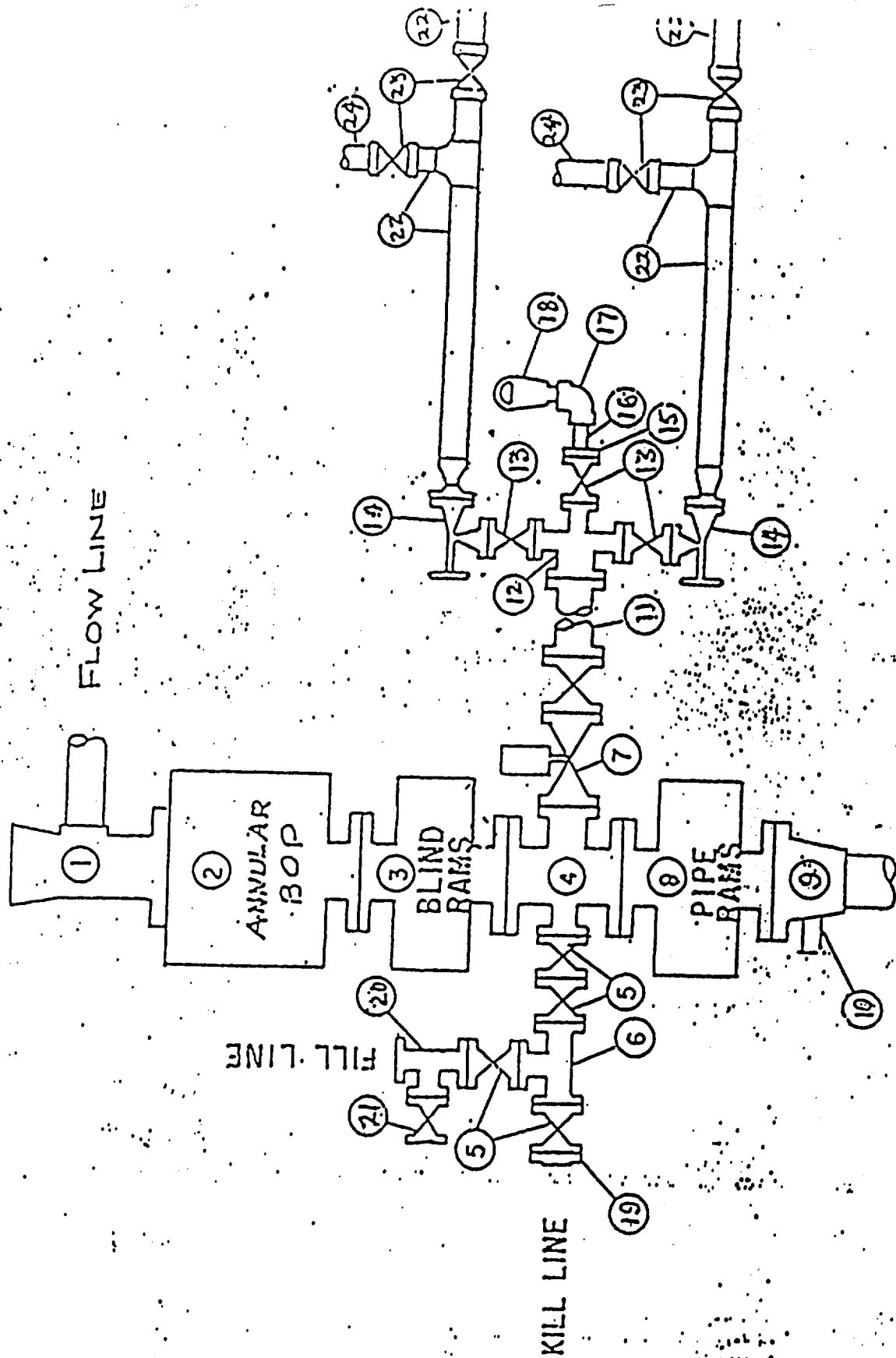
Date

11/7/85

I hereby certify that the well location shown on this plat was plotted from field notes of actual surveys made by me or under my supervision, and that the same is true and correct to the best of my knowledge and belief.

John D. Jaquess
Date Surveyed
November 1, 1985
New Mexico
Registered Professional Engineer
and/or Land Surveyor
John D. Jaquess, P.E. & L.S.
Certificate No. 6290

FLOW LINE PREVENTER SPECIFICATION



SURFACE USE PLAN EXHIBIT "F"
 McClellan Oil Corporation
 Renee Fed. No. 3
 Sec. 20-T16S-R29E
 Eddy County, N.M.

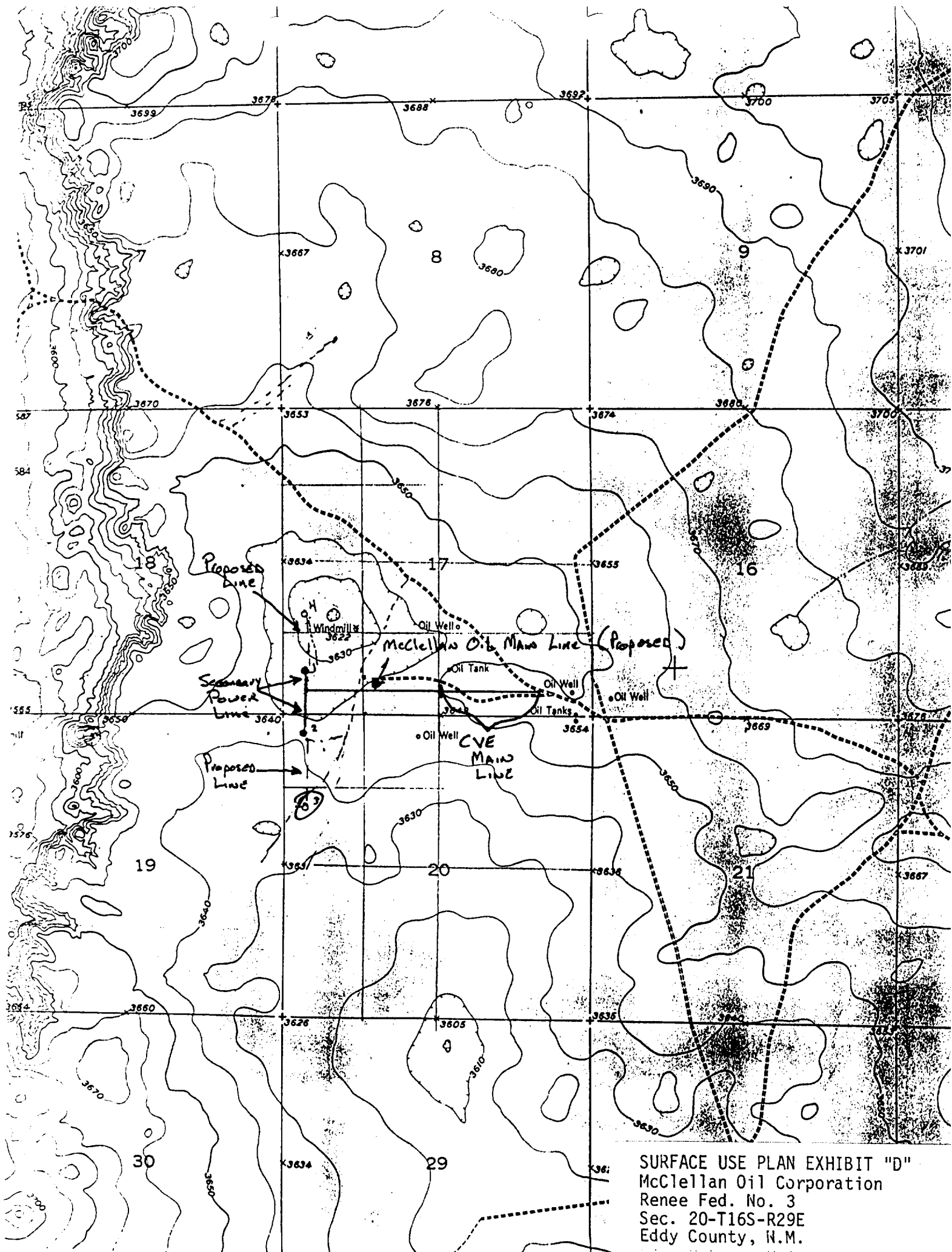
McClellan Oil Corp.
Renee Fed. No. 3

REQUIREMENTS
(NTL-6)

1. Location: 1650' FNL & 330' FWL of Sec. 20-T16S-R29E
2. Elevation: 3638' G.L.
3. Geologic name of surface formation: See archaeological report
4. Type of drilling rig and associated equipment: Rotary
5. Proposed drilling depth and objective formation: 1925' - Penrose Sand
6. Estimated tops of geologic markers:

Yates	<u>782'</u>	San Andres	<u> </u>	Abo	<u> </u>
7-Rivers	<u>1000'</u>	Glorieta	<u> </u>	Wolfcamp	<u> </u>
Queen	<u>1538'</u>	Tubb	<u> </u>		
7. Estimated depths of any oil, water, or gas: Possible oil and gas at 1773'.
- 8-9. Proposed casing program:

<u>8-5/8" @ 300'</u>	<u>Grade J-55</u>	<u>Wt. 20 lb.</u>	<u>Type Cement Class "C"</u>
<u>5-1/2" @ 1920'</u>	<u>Grade J-55</u>	<u>Wt. 14 lb.</u>	<u>Type Cement Class "C"</u>
10. Specifications for pressure control equipment and testing procedures: Schaeffer type E 10" series 900 hydraulic BOP
11. Type and characteristics of drilling fluids: Drill with fresh water and mud up with 30 viscosity mud at total depth.
12. Testing, logging, and coring programs: No testing or coring is anticipated. Will run Gamma Ray-Neutron at total depth.
13. Anticipated abnormal pressures or temperature: None anticipated
14. Anticipated commencement and completion date: 12/11/85 - 12/21/85



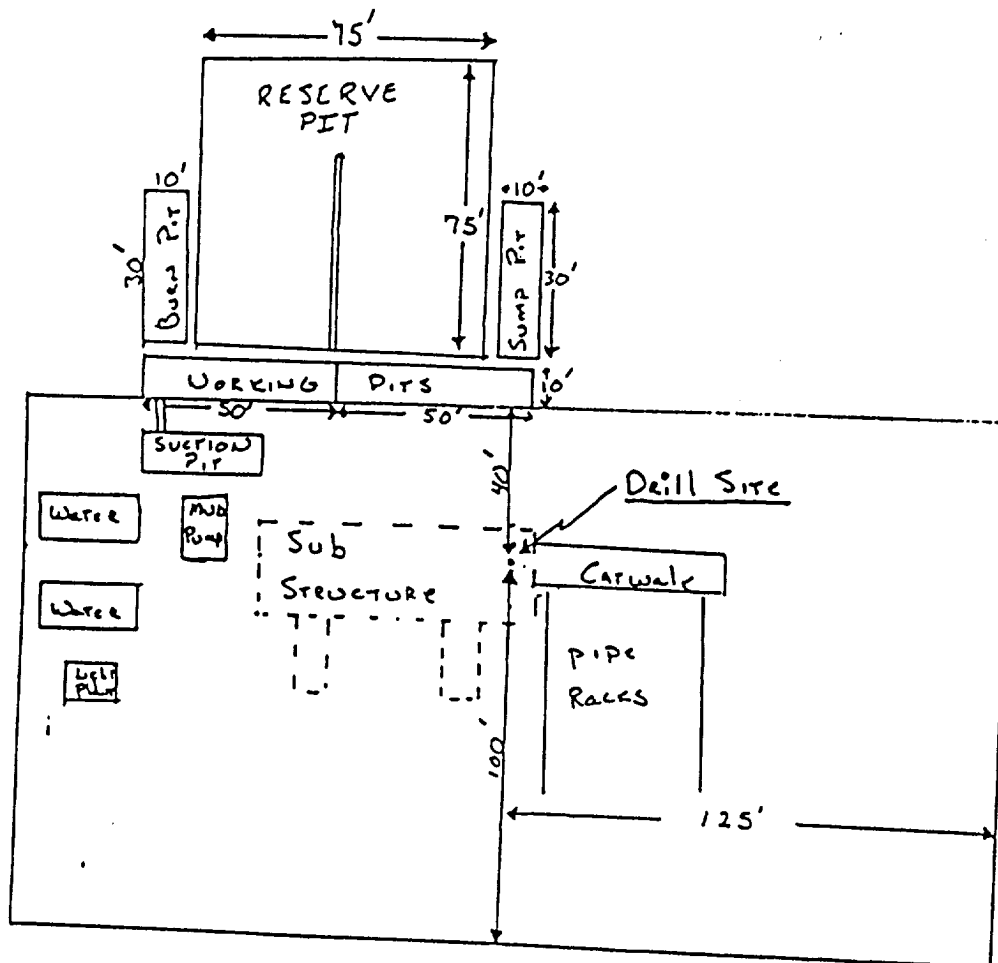
SURFACE USE PLAN EXHIBIT "D"
McClellan Oil Corporation
Renee Fed. No. 3
Sec. 20-T16S-R29E
Eddy County, N.M.

McCLELLAN OIL CORPORATION
SUGGESTED PAD DIMENSIONS

Reserve Pits 4 ft. deep, plastic lined

Working pits 5 ft. deep

No cellar



Scale 1" = 50'