

RECEIVED BY  
Form 9-331C  
May 1963

NOV 22 1985

O. C. D.

DEPARTMENT OF THE INTERIOR

GEOLOGICAL SURVEY

NEW MEXICO CONS. COMMISSION

Drawer DD

Artesia, NM 88210

UNITED STATES

SUBMIT 1 REPLICATE\*  
(Other instructions on  
reverse side)

Form approved.  
Budget Bureau No. 42-R1425.

30-015-15496

5. LEASE DESIGNATION AND SERIAL NO.

NM-10276

6. IF INDIAN, ALLOTTEE OR TRIBE NAME

7. UNIT AGREEMENT NAME

8. FARM OR LEASE NAME

TXO Fed.

9. WELL NO.

1

10. FIELD AND POOL, OR WILDCAT

Wildcat

11. SEC., T., R., M., OR BLK.

AND SURVEY OR AREA

Sec. 8-T16S-R29E

12. COUNTY OR PARISH

Eddy

13. STATE

NM

1a. TYPE OF WORK

DRILL ☒

DEEPEN ☐

PLUG BACK ☐

b. TYPE OF WELL

OIL  
WELL ☒

GAS  
WELL ☐

OTHER

SINGLE  
ZONE ☐

MULTIPLE  
ZONE ☐

2. NAME OF OPERATOR

McClellan Oil Corporation

3. ADDRESS OF OPERATOR

P.O. Drawer 730, Roswell, NM 88202

4. LOCATION OF WELL (Report location clearly and in accordance with any State requirements.)

At surface

660' FSL & 660' FWL

At proposed prod. zone

14. DISTANCE IN MILES AND DIRECTION FROM NEAREST TOWN OR POST OFFICE\*

21 miles northwest of Loco Hills, NM

15. DISTANCE FROM PROPOSED\*

LOCATION TO NEAREST  
PROPERTY OR LEASE LINE, FT.  
(Also to nearest drlg. unit line, if any)

660'

16. NO. OF ACRES IN LEASE

640

17. NO. OF ACRES ASSIGNED

TO THIS WELL

40

18. DISTANCE FROM PROPOSED LOCATION\*  
TO NEAREST WELL, DRILLING, COMPLETED,  
OR APPLIED FOR, ON THIS LEASE, FT.

NA

19. PROPOSED DEPTH

1830'

20. ROTARY OR CABLE TOOLS

Rotary

21. ELEVATIONS (Show whether DF, RT, GR, etc.)

3661' G.L.

22. APPROX. DATE WORK WILL START\*

Dec. 5, 1985

23. PROPOSED CASING AND CEMENTING PROGRAM

SIZE OF HOLE	SIZE OF CASING	WEIGHT PER FOOT	SETTING DEPTH	QUANTITY OF CEMENT
12-1/4"	8-5/8"	20 lbs.	275-300'	Circulated-300 sx "C" + 2% CaCl <sub>2</sub>
7-7/8"	5-1/2"	14 lbs.	1830'	400 sx "C"

Propose to drill a well to the Penrose Sand in the Queen formation. Will run 8-5/8" casing to the top of the salt. Will drill with fresh water and mud up with 30 viscosity mud at total depth. If production is indicated by logs, will run 5-1/2" casing and attempt completion.

Estimated formation tops: Salt 221' Queen 1439'  
Yates 693' Penrose 1676'

Posted API  
ID 11, NCL  
11-27-85

IN ABOVE SPACE DESCRIBE PROPOSED PROGRAM: If proposal is to deepen or plug back, give data on present productive zone and proposed new productive zone. If proposal is to drill or deepen directionally, give pertinent data on subsurface locations and measured and true vertical depths. Give blowout preventer program, if any.

24.

SIGNED

Mark McClellan

TITLE

Geologist

DATE 11/7/85

(This space for Federal or State office use)

PERMIT NO.

APPROVAL DATE

APPROVED BY

TITLE

DATE

CONDITIONS OF APPROVAL, IF ANY:

\*See Instructions On Reverse Side

APPROVAL SUBJECT TO  
GENERAL REQUIREMENTS AND  
SPECIAL STIPULATIONS  
ATTACHED

All distances must be from the outer boundaries of the Section.

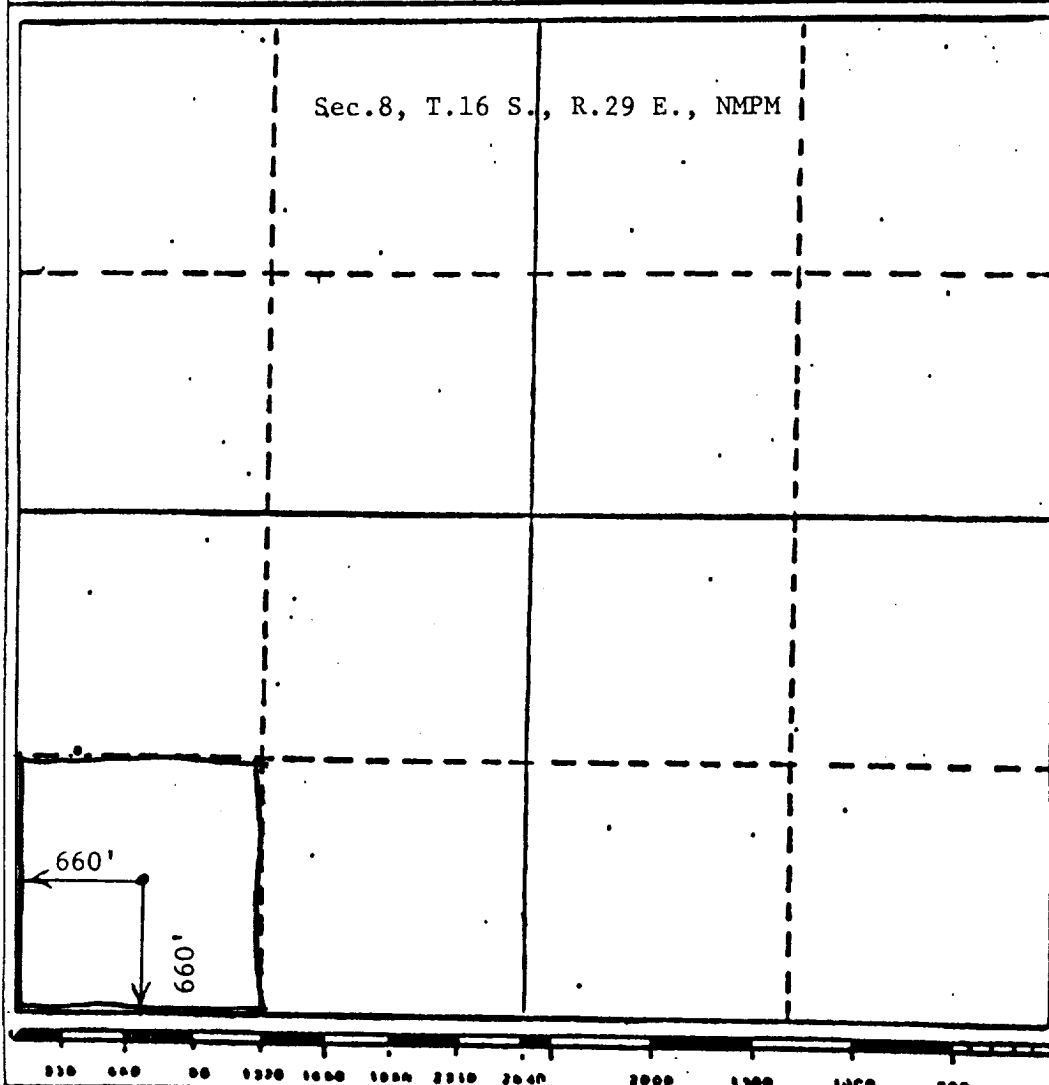
Operator <b>McClellan Oil Corp.</b>		Lease <b>TXO Federal</b>		Well No. <b>#1</b>
Unit Letter <b>M</b>	Section <b>8</b>	Township <b>16 South</b>	Range <b>29 East</b>	County <b>Eddy</b>
Actual Footage Location of Well: <b>660</b> feet from the <b>South</b> line and <b>660</b> feet from the <b>West</b> line				
Ground Level Elev. <b>3661</b>	Producing Formation <b>Penrose</b>	Pool <b>Wildcat</b>	Dedicated Acreage <b>40</b> Acres	

1. Outline the acreage dedicated to the subject well by colored pencil or hatchure marks on the plat below.
2. If more than one lease is dedicated to the well, outline each and identify the ownership thereof (both as to working interest and royalty).
3. If more than one lease of different ownership is dedicated to the well, have the interests of all owners been consolidated by communitization, unitization, force-pooling, etc?

☐ Yes ☐ No If answer is "yes," type of consolidation \_\_\_\_\_

If answer is "no," list the owners and tract descriptions which have actually been consolidated. (Use reverse side of this form if necessary.) \_\_\_\_\_

No allowable will be assigned to the well until all interests have been consolidated (by communitization, unitization, forced-pooling, or otherwise) or until a non-standard unit, eliminating such interests, has been approved by the Division



**CERTIFICATION**

I hereby certify that the information contained herein is true and complete to the best of my knowledge and belief.

*Mark McClellan*

Name

Mark McClellan

Position

Geologist

Company

McClellan Oil Corp.

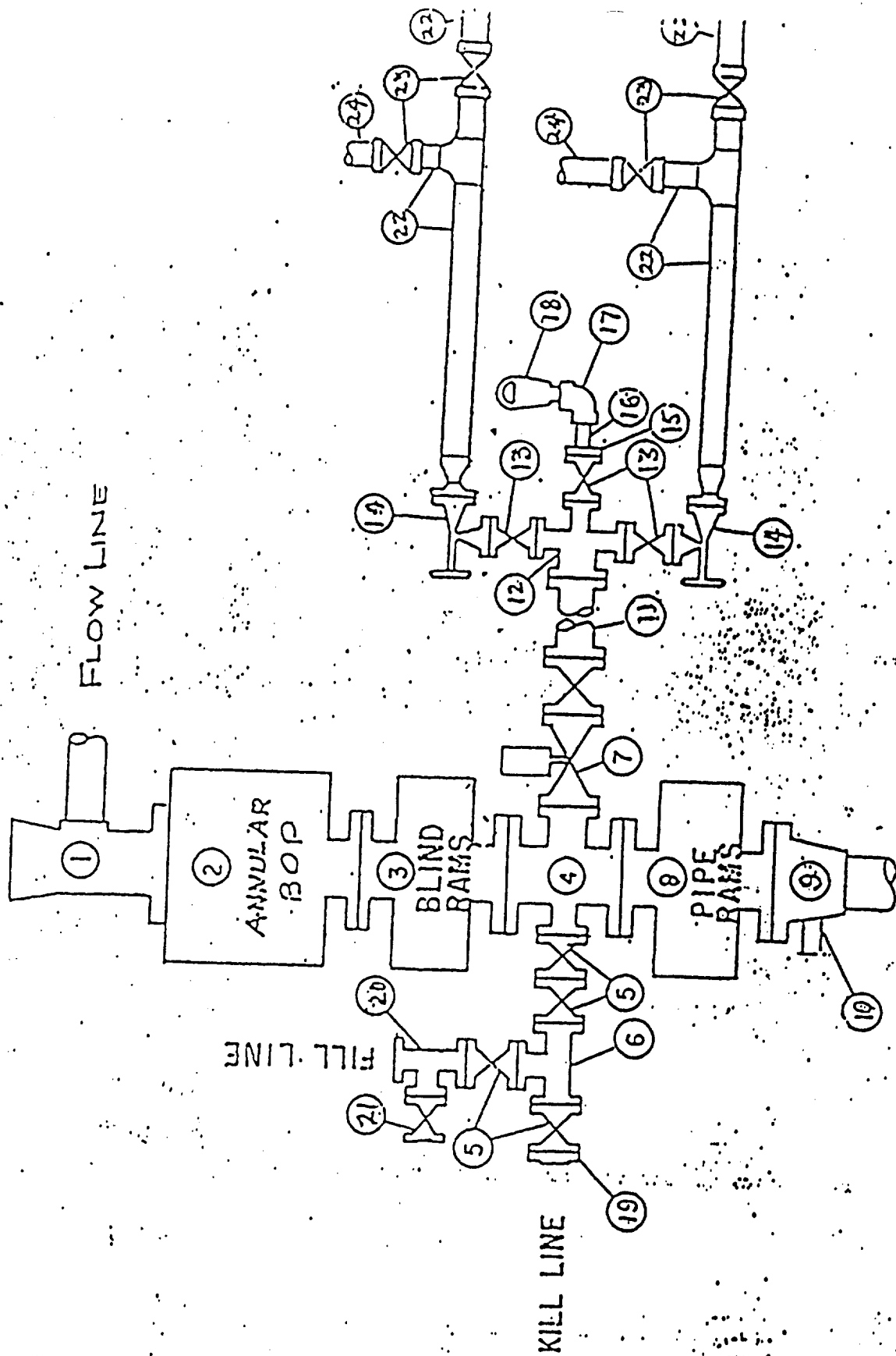
Date

11/7/85

I hereby certify that the well location shown on this plat was plotted from field notes of actual surveys made by me or under my supervision, and that the same is true and correct to the best of my knowledge and belief.

**JOHN D. JAQUES**  
Date Surveyed  
November 1, 1985  
Registered Professional Engineer  
and/or Land Surveyor  
John D. Jaques, P.E. & L.S.  
Certificate No. 6290

# FLOWLINE PREVENTER SPECIFICATION



McClellan Oil Corp.  
TXO Fed. No. 1

REQUIREMENTS  
(NTL-6)

1. Location: 660' FSL & 660' FWL of Sec. 8-T16S-R29E
2. Elevation: 3661' G.L.
3. Geologic name of surface formation: See archaeological report
4. Type of drilling rig and associated equipment: Rotary
5. Proposed drilling depth and objective formation: 1830' - Penrose Sand
6. Estimated tops of geologic markers:

Yates	<u>693'</u>	San Andres	<u>          </u>	Abo	<u>          </u>
7-Rivers	<u>          </u>	Glorieta	<u>          </u>	Wolfcamp	<u>          </u>
Queen	<u>1439'</u>	Tubb	<u>          </u>		
7. Estimated depths of any oil, water, or gas: Possible oil and gas at 1676'.
- 8-9. Proposed casing program:

<u>8-5/8"</u>	@	<u>210'</u>	Grade	<u>H-40</u>	Wt.	<u>20 lb.</u>	Type Cement	<u>Class "C"</u>
<u>5-1/2"</u>	@	<u>1830'</u>	Grade	<u>J-55</u>	Wt.	<u>14 lb.</u>	Type Cement	<u>Class "C"</u>
10. Specifications for pressure control equipment and testing procedures:  
Schaeffer type E 10" series 900 hydraulic BOP
11. Type and characteristics of drilling fluids: Drill with fresh water and mud up with 30 viscosity mud at total depth.
12. Testing, logging, and coring programs: No testing or coring is anticipated. Will run a CNL-LDT gamma ray log at total depth.
13. Anticipated abnormal pressures or temperature: None anticipated
14. Anticipated commencement and completion date:  
12/05/85 - 12/20/85



McCLELLAN OIL CORPORATION  
SUGGESTED PAD DIMENSIONS

Reserve Pits 4 ft. deep, plastic lined

Working pits 5 ft. deep

No cellar

