

UNITED STATES
DEPARTMENT OF THE INTERIOR
BUREAU OF LAND MANAGEMENT

30-015-25515
5. LEASE DESIGNATION AND SERIAL NO.

LC-046119A

6. IF INDIAN, ALLOTTEE OR TRIBE NAME

N/A

7. UNIT AGREEMENT NAME

N/A

8. FARM OR LEASE NAME

Ginger Federal

9. WELL NO.

1

10. FIELD AND POOL, OR WILDCAT

High Lonesome

11. SEC. T. R. M., OR BLK.
AND SURVEY OR AREA

Sec 20-T16S-R29E

12. COUNTY OR PARISH 13. STATE

Eddy

NM

APPLICATION FOR PERMIT TO DRILL, DEEPEN, OR PLUG BACK

1a. TYPE OF WORK

DRILL ☒

DEEPEN ☐

PLUG BACK ☐

b. TYPE OF WELL

OIL
WELL ☒

GAS
WELL ☐

OTHER

SINGLE
ZONE ☐

MULTIPLE
ZONE ☐

2. NAME OF OPERATOR

Suntex Resources, Inc. ✓

3. ADDRESS OF OPERATOR

8111 LBJ Freeway, Suite 570, Dallas, TX 75251

4. LOCATION OF WELL (Report location clearly and in accordance with any State requirements.)

At surface

1650' FNL & 1650' FWL, Sec 20-T16S-R29E, NMPM

At proposed prod. zone

Same

14. DISTANCE IN MILES AND DIRECTION FROM NEAREST TOWN OR POST OFFICE*

Approximately 8 air miles Northwest of Loco Hills, NM

10. DISTANCE FROM PROPOSED*

LOCATION TO NEAREST
PROPERTY OR LEASE LINE, FT.
(Also to nearest drig. unit line, if any)

1650'

16. NO. OF ACRES IN LEASE

640

17. NO. OF ACRES ASSIGNED

TO THIS WELL

40

18. DISTANCE FROM PROPOSED LOCATION*
TO NEAREST WELL, DRILLING, COMPLETED,
OR APPLIED FOR, ON THIS LEASE, FT.

1200'

19. PROPOSED DEPTH

1850'

20. ROTARY OR CABLE TOOLS

Rotary

21. ELEVATIONS (Show whether DF, RT, GR, etc.)

3637.3' G.L.

22. APPROX. DATE WORK WILL START*

December 16, 1985

23.

PROPOSED CASING AND CEMENTING PROGRAM

SIZE OF HOLE	SIZE OF CASING	WEIGHT PER FOOT	SETTING DEPTH	QUANTITY OF CEMENT
12 1/4"	8 5/8"	24#	1850'	Class "C" w/ 2% gel to surface 235 sks lite + 100 sks Class "C"
7 7/8"	4 1/2"	10.5#	1850'	

Well will be drilled to a total depth of 1850' and all potential oil and gas zones will be evaluated. If commercial production is indicated, well will be selectively perforated and stimulated.

Attached are: 1. Well location and dedication plat.
2. Supplemental Drilling Data.
3. Surface Use Plan

Gas is not dedicated to a pipeline.

RECEIVED BY

DEC 19 1985

O. C. D.
ARTESIA, OFFICE

Posted API
ID 1-NL
12-27-85

IN ABOVE SPACE DESCRIBE PROPOSED PROGRAM: If proposal is to deepen or plug back, give data on present productive zone and proposed new productive zone. If proposal is to drill or deepen directionally, give pertinent data on subsurface locations and measured and true vertical depths. Give blowout preventer program, if any.

24. SIGNED Beth M. Donald Agent for Truman Casey,
TITLE Field Representative DATE 12-9-85

(This space for Federal or State office use)

PERMIT NO. _____ APPROVAL DATE _____

APPROVED BY _____ TITLE _____
CONDITIONS OF APPROVAL, IF ANY:

DATE 12-18-85

APPROVAL SUBJECT TO
GENERAL REQUIREMENTS AND
SPECIAL STIPULATIONS

*See Instructions On Reverse Side

NEW MEXICO OIL CONSERVATION COMMISSION
WELL LOCATION AND ACREAGE DEDICATION PLAT

Form C-102
Supersedes C-128
Effective 1-1-65

All distances must be from the outer boundaries of the Section

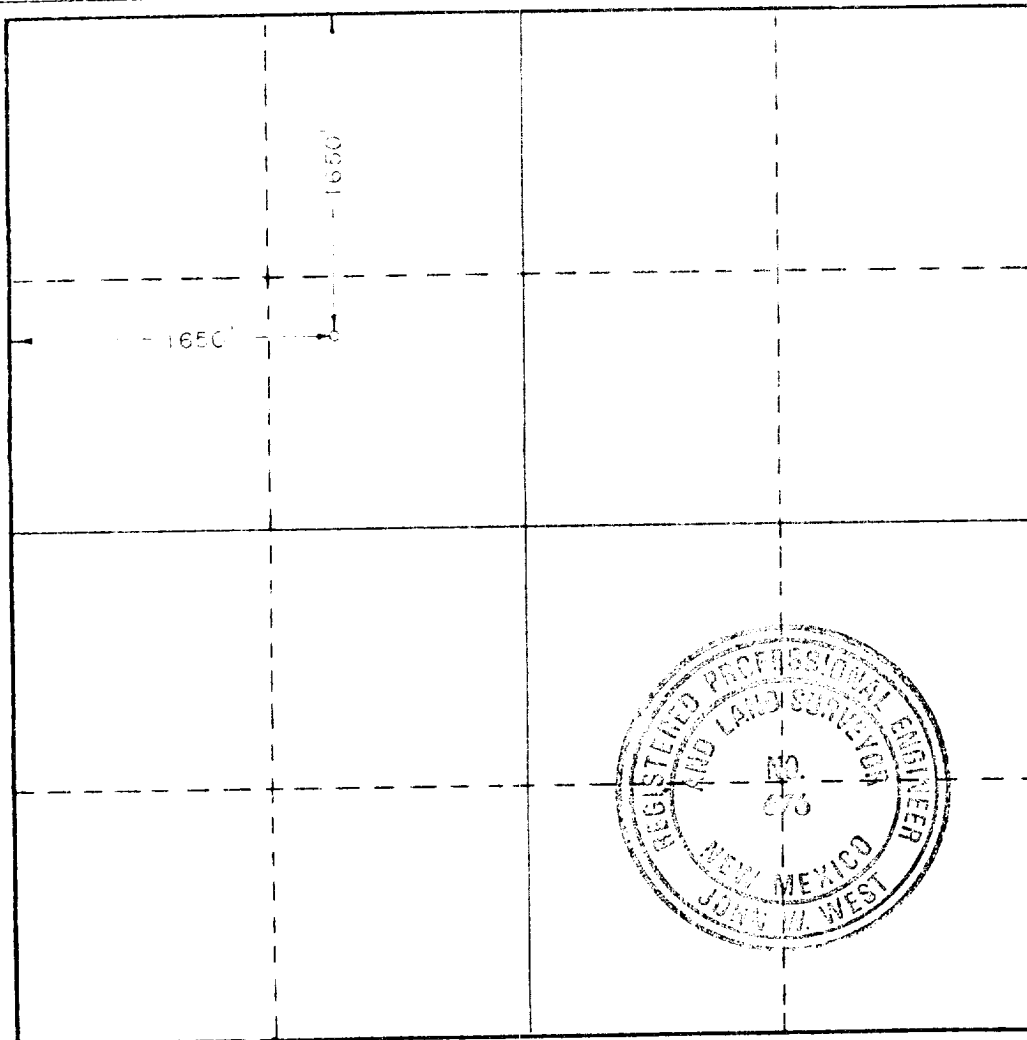
Owner SUNTEX RESOURCES, INC.		Lease GINGER FEDERAL		Well No. 1
Section 10	Range 17N	Township 35N	Meridian 10W	County EDDY
Producing Formation Queen		Dedicated Acreage 40 Acres		

- Outline the acreage dedicated to the subject well by colored pencil or hatchure marks on the plat below.
- If more than one lease is dedicated to the well, outline each and identify the ownership thereof (both as to working interest and royalty).
- If more than one lease of different ownership is dedicated to the well, have the interests of all owners been consolidated by communitization, unitization, force-pooling, etc?

☐ Yes ☐ No If answer is "yes," type of consolidation _____

If answer is "no," list the owners and tract descriptions which have actually been consolidated. (Use reverse side of this form if necessary.) _____

No allowable will be assigned to the well until all interests have been consolidated (by communitization, unitization, forced-pooling, or otherwise) or until a non-standard unit, eliminating such interests, has been approved by the Commission.



CERTIFICATION

I hereby certify that the information contained herein is true and complete to the best of my knowledge and belief.

Beth McDonald
Name
Beth McDonald
Position Agent for Truman Casey,
Field Representative
Company
Suntex Resources, Inc.

Date
12-9-85

I hereby certify that the well location shown on this plat was plotted from field notes of actual surveys made by me or under my supervision, and that the same is true and correct to the best of my knowledge and belief.

Date Surveyed
Nov. 15, 1985

Registered Professional Engineer and/or Land Surveyor

John W. West
Certificate No. JOHN W. WEST, 676
RONALD J. EIDSON, 3239

6286

REGAN OFFSHORE INTERNATIONAL, INC.

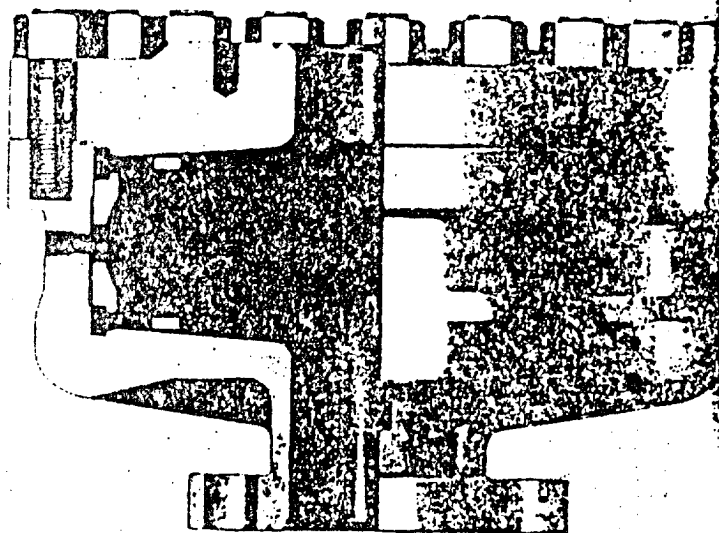
Torrance,

REGAN BLOWOUT PREVENTERS

The Regan Torus Blowout Preventer is used primarily on production and workover rigs for well control up to 3000 PSI working pressure.

DESIGN FEATURES

- The Torus Preventer is designed for minimum height to facilitate its use with production and workover rigs.
- The rubber packer will conform to any object in the well bore. Sealing ability is not affected by minor damage to the inner bore.
- The packer will seal an open hole at full working pressure.
- The dual packer design increases the reliability of the preventer since the outer rubber is never exposed to the well bore. Under ordinary service, the inner packer is rarely replaced.



TORUS BLOWOUT PREVENTER
PATENTED

SPECIFICATIONS

Nominal Size	Test Pressure (psi)	DIMENSIONS (in.)			Weight (lb.)	End Flanges (I)	R/RX Ring Grooves	Side Outlet
		Outside Diameter	Thru Bore	Overall Height				
6	1500 2000	24 1/2	21 1/2 21 1/2	19 1/2 21 1/2	1300 1500	Nom. 6 Nom. 6	15 45	None 2" L.P.
8	2000	34 1/2	31 1/2	25	2675	Nom. 8	45	None

Is bottom flange for use with either psi or 1500 psi. It is to be used with the Torus Preventer. It is a standard flange and is not to be used with the Torus Preventer.

SUPPLEMENTAL DRILLING DATA

Suntex Resources, Inc.
WELL: Ginger Federal #1
1650' FNL & 1650' FWL Sec. 20-T16S-R29E
Eddy County, New Mexico

1. SURFACE FORMATION: Quaternary
2. ESTIMATED TOPS OF GEOLOGICAL MARKERS:

Queen	1550'	Penrose	1770'
-------	-------	---------	-------
3. ANTICIPATED POROSITY ZONES:

Water	None
Oil	1550' - 1800'
4. CASING DESIGN:

<u>Hole Size</u>	<u>Casing</u>	<u>Interval</u>	<u>Weight</u>	<u>Class</u>	<u>Joint</u>	<u>Condition</u>
12 $\frac{1}{4}$ "	8-5/8"	0 - 350'	24#	J-55	ST&C	New
7-7/8"	4-1/2"	0 - 1850'	10.5#	J-55	ST&C	New
5. SURFACE CONTROL EQUIPMENT: Regan Blowout Preventer (specifications attached).
6. CIRCULATING MEDIUM: 0 - 350': Fresh Water
350' - 1850': Brine Water
7. AUXILIARY EQUIPMENT: Drill string safety valve.
8. TESTING, LOGGING AND CORING PROGRAMS: Dual Laterlog w/ Gamma Ray: 0 - 1850'.
Compensated Density Neutron Log: 850' - 1850'.
9. ABNORMAL PRESSURES, TEMPERATURES OR GASES: None anticipated.
10. ANTICIPATED DATES: It is planned that operations will commence about December 1/6 1985, or immediately upon approval of this application. Duration of drilling and completion operations should be 20 to 40 days.

ARTESIA QUADRANGLE - 106

EDDY & CHAVES COUNTIES

R.27 E.

R.28 E.

R.29 E.

Correct - 95

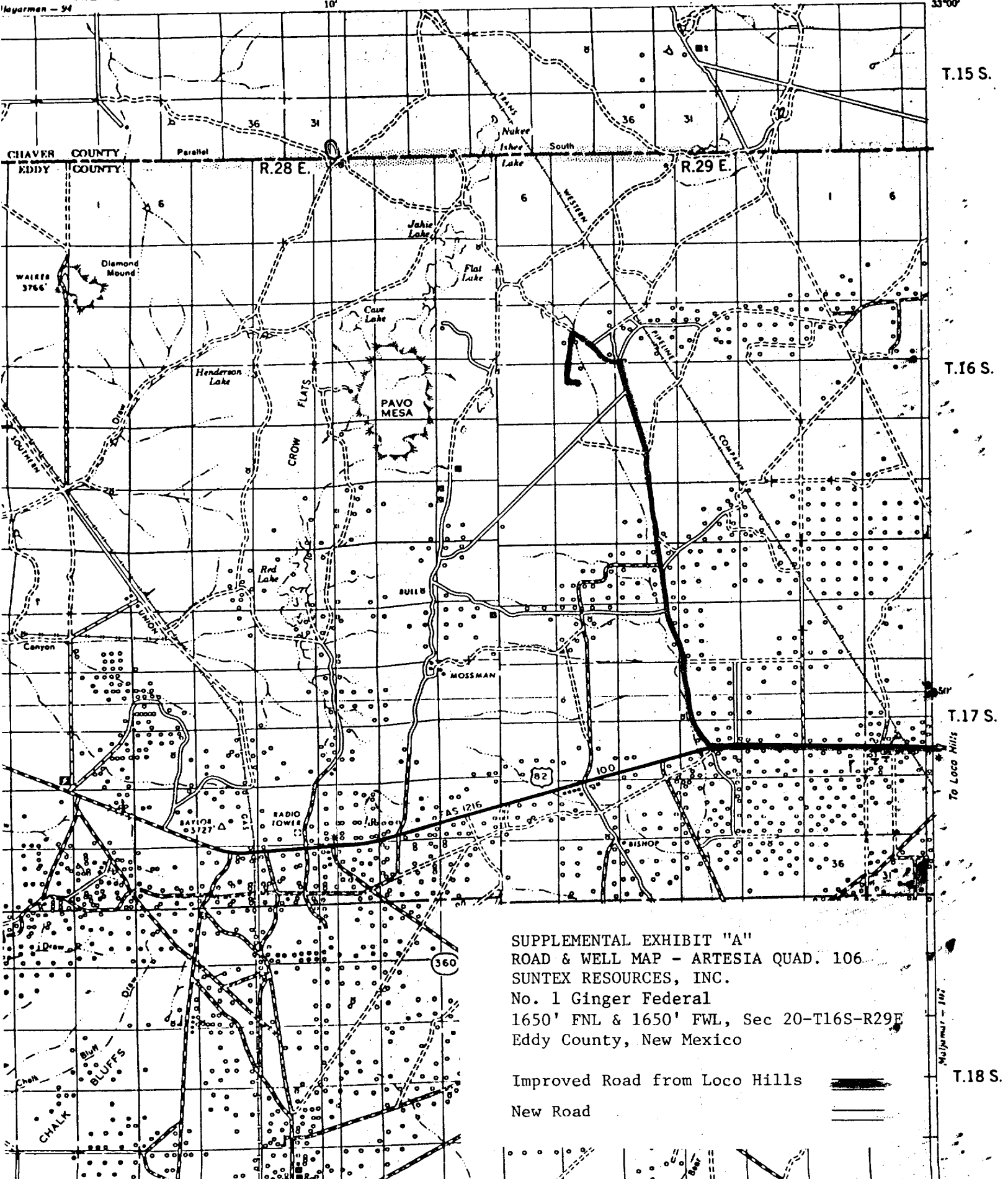


EXHIBIT "B"

PLAT FOR PIT LOCATION FOR ARTESIA FISHING TOOL

Rigs #1 & #2; L & M DRILLING #2 and LARUE

DRILLING #2

