

UNITED STATES  
DEPARTMENT OF THE INTERIOR  
BUREAU OF LAND MANAGEMENT

APPLICATION FOR PERMIT TO DRILL, DEEPEN, OR PLUG BACK

1a. TYPE OF WORK

DRILL ☒

DEEPEN ☐

PLUG BACK ☐

b. TYPE OF WELL

OIL  
WELL ☒

GAS  
WELL ☐

OTHER ☐

SINGLE  
ZONE ☐

MULTIPLE  
ZONE ☐

2. NAME OF OPERATOR

Suntex Resources, Inc. ✓

3. ADDRESS OF OPERATOR

8111 LBJ Freeway, Suite 570, Dallas, TX 75251

4. LOCATION OF WELL (Report location clearly and in accordance with any state requirements.)

At surface

23107 FNL & 1650' FWL of Sec 17-T16S-R29E, NMMPARTESIA, OFFICE

23107 proposed prod. zone

Same

14. DISTANCE IN MILES AND DIRECTION FROM NEAREST TOWN OR POST OFFICE\*

Approximately 8.6 miles Northwest of Loco Hills, NM

15. DISTANCE FROM PROPOSED\*

LOCATION TO NEAREST  
PROPERTY OR LEASE LINE, FT.  
(Also to nearest drig. unit line, if any)

1650'

16. NO. OF ACRES IN LEASE

320

17. NO. OF ACRES ASSIGNED  
TO THIS WELL

40

18. DISTANCE FROM PROPOSED LOCATION\*

TO NEAREST WELL, DRILLING, COMPLETED,  
OR APPLIED FOR, ON THIS LEASE, FT.

660'

19. PROPOSED DEPTH

1850'

20. ROTARY OR CABLE TOOLS

Rotary

21. ELEVATIONS (Show whether DF, RT, GR, etc.)

3649.1' GR

22. APPROX. DATE WORK WILL START\*

March 31, 1986

23.

PROPOSED CASING AND CEMENTING PROGRAM

SIZE OF HOLE	SIZE OF CASING	WEIGHT PER FOOT	SETTING DEPTH	QUANTITY OF CEMENT
12 1/4"	8 5/8"	24#	300'	Class "C" w/ 2% gel to surface
7 7/8"	4 1/2"	10.50#	1850'	235 sacks lite + 100 sx Class "C"

Well will be drilled to a total depth of approximately 1850' and all potential oil and gas zones will be evaluated. If commercial production is indicated, well will be selectively perforated and stimulated.

Attached are: 1. Well location and dedication plat  
2. Supplemental drilling data  
3. Surface Use Plan

Gas is not dedicated to a pipeline.

IN ABOVE SPACE DESCRIBE PROPOSED PROGRAM: If proposal is to deepen or plug back, give data on present productive zone and proposed new productive zone. If proposal is to drill or deepen directionally, give pertinent data on subsurface locations and measured and true vertical depths. Give blowout preventer program, if any.

24.

SIGNED Seth McDonald

Agent for Truman Casey  
TITLE Field Representative

DATE 3/20/86

(This space for Federal or State office use)

PERMIT NO. Old Sgd. Charles S. De

APPROVAL DATE

APPROVED BY

Area Manager

TITLE

DATE

4-8-86

CONDITIONS OF APPROVAL, IF ANY:

\*See Instructions On Reverse Side

Title 18 U.S.C. Section 1001, makes it a crime for any person knowingly and willfully to make to any department or agency of the United States any false, fictitious or fraudulent statements or representations as to any matter within its jurisdiction.

APPROVAL SUBJECT TO  
GENERAL REQUIREMENTS AND  
SPECIAL STIPULATIONS  
ATTACHED

Posted ID-1  
API, NL  
4-18-86

# WELL LOCATION AND ACREAGE DEDICATION PLAT

Form C-102  
Supersedes C-128  
Effective 1-1-65

All distances must be from the outer boundaries of the Section

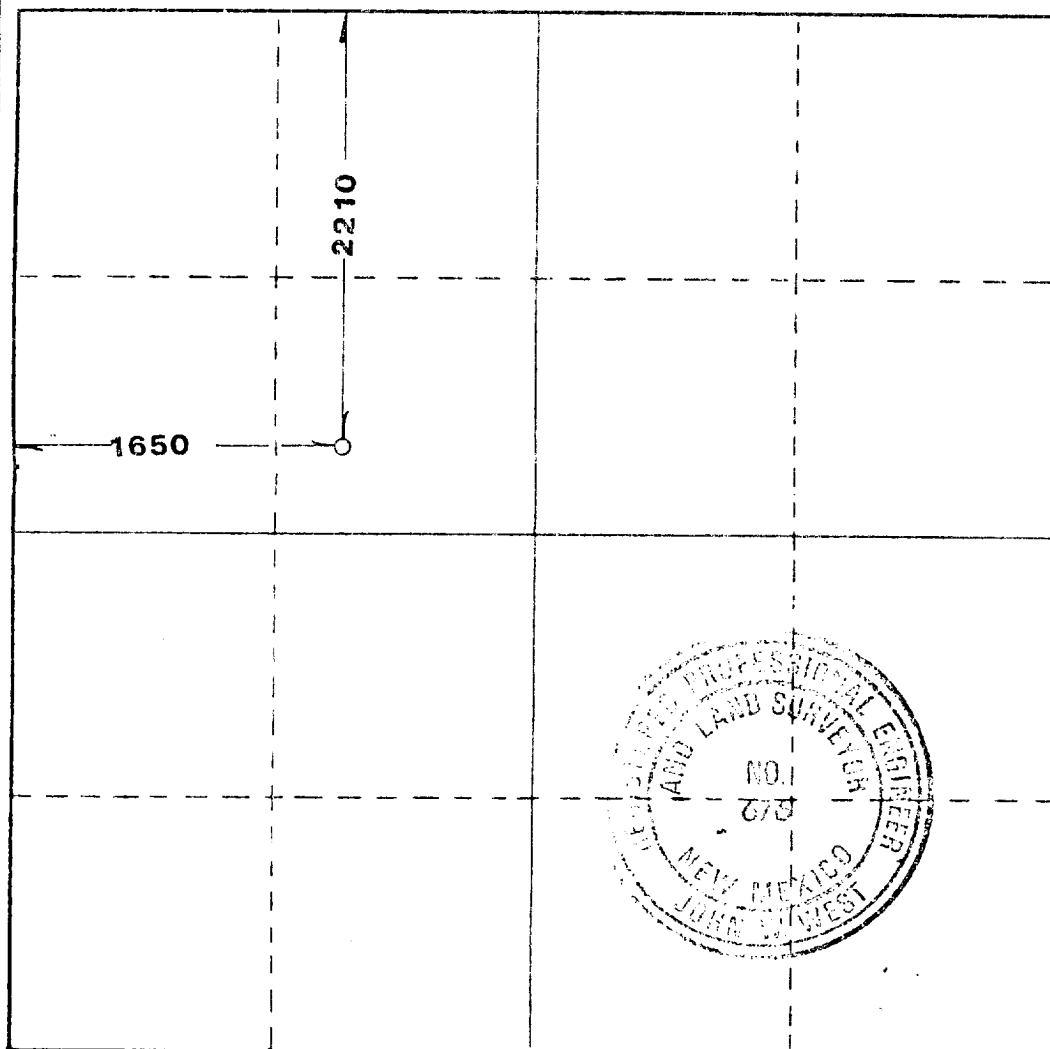
Operator <b>SUN-TEX RESOURCES INC.</b>		Lease <b>SHILO FEDERAL</b>		Well No. <b>4</b>	
Unit Letter <b>F</b>	Section <b>17</b>	Township <b>16 SOUTH</b>	Range <b>29 EAST</b>	County <b>EDDY</b>	
Actual Footage Location of Well: <b>2210</b> feet from the <b>NORTH</b> line and <b>1650</b> feet from the <b>WEST</b> line					
Ground Level Elev. <b>3649.1'</b>	Producing Formation <i>Permian</i>	Foot <i>Perth Amoson</i>	Dedicated Acreage: <b>40</b> Acres		

1. Outline the acreage dedicated to the subject well by colored pencil or hachure marks on the plat below.
2. If more than one lease is dedicated to the well, outline each and identify the ownership thereof (both as to working interest and royalty).
3. If more than one lease of different ownership is dedicated to the well, have the interests of all owners been consolidated by communitization, unitization, force-pooling, etc?

☐ Yes ☐ No If answer is "yes," type of consolidation \_\_\_\_\_

If answer is "no," list the owners and tract descriptions which have actually been consolidated. (Use reverse side of this form if necessary.) \_\_\_\_\_

No allowable will be assigned to the well until all interests have been consolidated (by communitization, unitization, forced-pooling, or otherwise) or until a non-standard unit, eliminating such interests, has been approved by the Commission.



## CERTIFICATION

I hereby certify that the information contained herein is true and complete to the best of my knowledge and belief.

*Kenneth M. Zalley*

Name

*Operations Manager*

Position

*Sun Tex Resources, Inc.*

Company

*3/31/86*

Date

I hereby certify that the well location shown on this plat was plotted from field notes of actual surveys made by me or under my supervision, and that the same is true and correct to the best of my knowledge and belief.

Date Surveyed

**MARCH 11, 1986**

Registered Professional Engineer and/or Land Surveyor

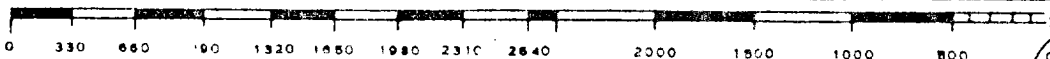
*John W. West*

Certificate No. **JOHN W. WEST,**

**676**

**RONALD J. EIDSON,**

**3239**



## REGAN BLOWOUT PREVENTERS

The Regan Torus Blowout Preventer is used primarily on production and workover rigs for well control up to 3000 PSI working pressure

## DESIGN FEATURES

- The Torus Preventer is designed for minimum height to facilitate its use with production and workover rigs.
- The rubber packer will conform to any object in the well bore. Sealing ability is not affected by minor damage to the inner bore.
- The packer will seal on open hole at full working pressure.
- The dual packer design increases the reliability of the preventer since the outer rubber is never exposed to the well bore. Under ordinary service, the center packer is rarely replaced.



TORUS BLOWOUT PREVENTER  
PATENTED

## SPECIFICATIONS

Nominal Size	Test Pressure (psi)	DIMENSIONS (in.)			Weight (lb.)	End Flanges (1)	R/RX Ring Grooves	Side Outlet
		Outside Diameter	Thru Bore	Overall Height				
6	3000	27 1/4	7 1/4	19 1/4	1300	6mm, 6	45	None
8	3000	34 1/4	9	25	2625	6mm, 8	49	2" L.P.

1) Bottom flange for use with either psi API-6B flange used with subsea flange, 100 studs 1.5" flange unless noted.

SUPPLEMENTAL DRILLING DATA

Suntex Resources, Inc.  
WELL: Shiloh Federal #4  
2310' FNL & 1650' FWL of Sec. 17-T16S-R29E  
Eddy County, New Mexico

1. SURFACE FORMATION: Quaternary

2. ESTIMATED TOPS OF GEOLOGICAL MARKERS:

Queen	1550'	Penrose	1770'
-------	-------	---------	-------

3. ANTICIPATED POROSITY ZONES:

Water	None
Oil	1550 - 1800'

4. CASING DESIGN:

<u>Hole Size</u>	<u>Casing</u>	<u>Interval</u>	<u>Weight</u>	<u>Class</u>	<u>Joint</u>	<u>Condition</u>
12 1/4"	8-5/8"	0 - 300'	24#	J-55	ST&C	New
7-7/8"	4 1/2"	0 - 1850'	10.5#	J-55	ST&C	New

5. SURFACE CONTROL EQUIPMENT: Regan Blowout Preventer (specifications attached).

6. CIRCULATING MEDIUM: 0 - 300' : Fresh Water  
300' - 1850' : Brine Water

7. AUXILIARY EQUIPMENT: Drill string safety valve.

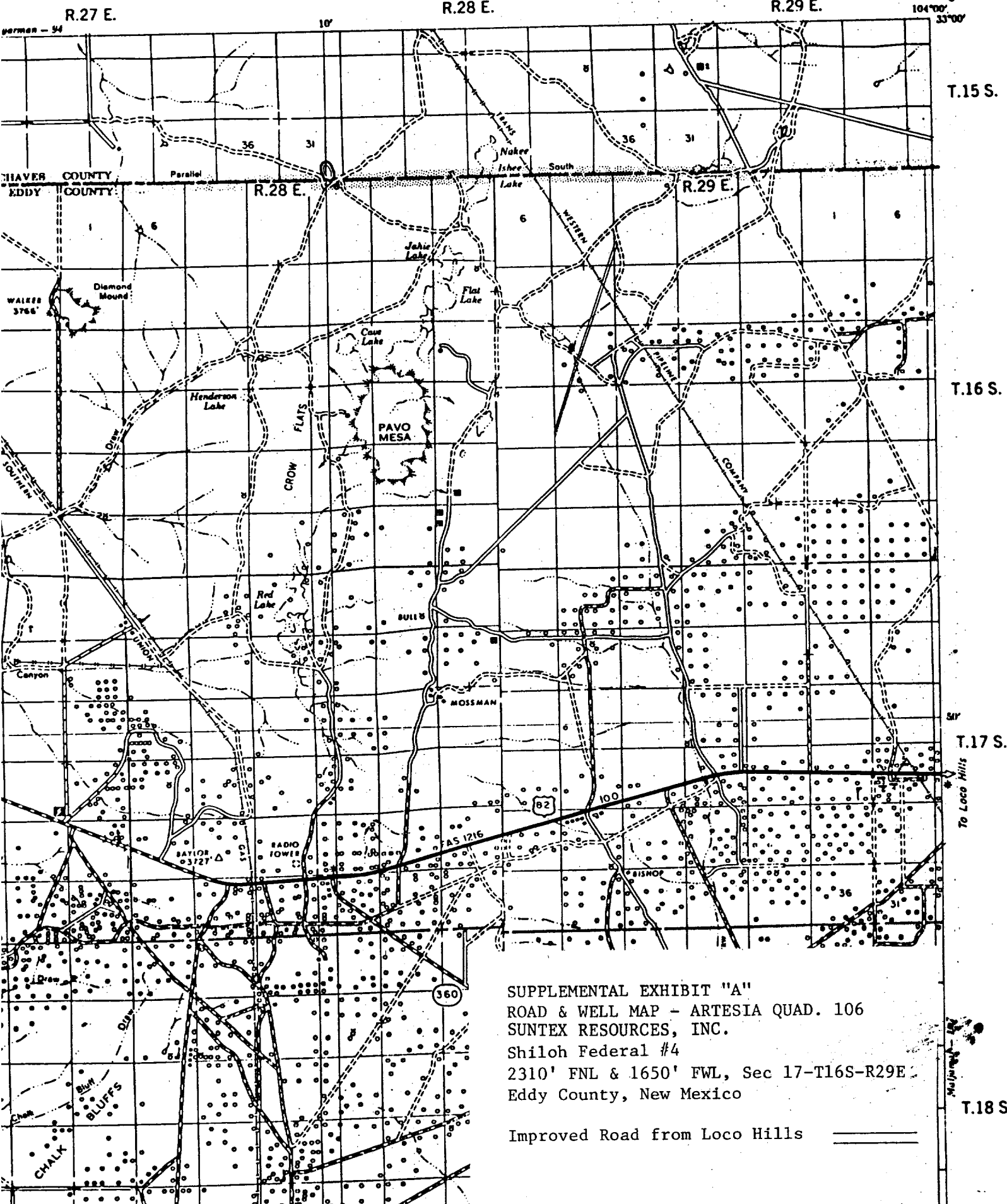
8. TESTING, LOGGING AND CORING PROGRAMS: Dual Laterolog w/ Gamma Ray: 1 - 1850'.  
Compensated Density Neutron Log: 850' - 1850'.

9. ABNORMAL PRESSURES, TEMPERATURES OR GASES: None anticipated.

10. ANTICIPATED DATES: It is planned that operations will commence about March 31, 1986, or immediately upon approval of this application. Duration of drilling and completion operations should be 20 to 40 days.

# ARTESIA QUADRANGLE - 106

EDDY & CHAVES COUNTIES



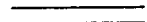
## SUPPLEMENTAL EXHIBIT "A"

ROAD & WELL MAP - ARTESIA QUAD. 106  
SUNTEX RESOURCES, INC.

Shiloh Federal #4

2310' FNL & 1650' FWL, Sec 17-T16S-R29E,  
Eddy County, New Mexico

Improved Road from Loco Hills



PLAT FOR PIT LOCATION FOR ARTESIA FISHING TOOL

Rigs #1 & #2; L & M DRILLING #2 and LARUE  
DRILLING #2

EXHIBIT "B"

