

Form 3160-3  
(November 1983)  
(formerly 9-331C)

NM OIL CONS. COMMISSION  
Draper ID  
Artesia, NM 87003  
SUBMIT IN TRIPLICATE\*  
(Other instructions on  
reverse side)

30-015-25672  
Form approved.  
Budget Bureau No. 1004-0136  
Expires August 31, 1985

UNITED STATES  
DEPARTMENT OF THE INTERIOR  
BUREAU OF LAND MANAGEMENT

APPLICATION FOR PERMIT TO DRILL, DEEPEN, OR PLUG BACK

1a. TYPE OF WORK

DRILL ☒

DEEPEN ☐

PLUG BACK ☐

b. TYPE OF WELL

OIL  
WELL ☒

GAS  
WELL ☐

OTHER

SINGLE  
ZONE ☐

MULTIPLE  
ZONE ☐

2. NAME OF OPERATOR

Beach Exploration, Inc.

3. ADDRESS OF OPERATOR

800 N. Marienfeld Suite 200 Midland, Texas 79701

4. LOCATION OF WELL (Report location clearly and in accordance with any State requirements.)\*

At surface

560' FSL & 2035' FWL

At proposed prod. zone

560' FSL & 2035' FWL

14. DISTANCE IN MILES AND DIRECTION FROM NEAREST TOWN OR POST OFFICE\*

18 Miles East-Northeast of Artesia

15. DISTANCE FROM PROPOSED\*

LOCATION TO NEAREST  
PROPERTY OR LEASE LINE, FT.

(Also to nearest drlg. unit line, if any)

560'

18. DISTANCE FROM PROPOSED LOCATION\*

TO NEAREST WELL, DRILLING, COMPLETED,  
OR APPLIED FOR, ON THIS LEASE, FT.

1090'

16. NO. OF ACRES IN LEASE

880

19. PROPOSED DEPTH

1900'

17. NO. OF ACRES ASSIGNED  
TO THIS WELL

40

20. ROTARY OR CABLE TOOLS

Rotary

21. ELEVATIONS (Show whether DF, RT, GR, etc.)

2035' GL

3655.5' GL

22. APPROX. DATE WORK WILL START\*

November 15, 1986

23.

PROPOSED CASING AND CEMENTING PROGRAM

SIZE OF HOLE	SIZE OF CASING	WEIGHT PER FOOT	SETTING DEPTH	QUANTITY OF CEMENT
12 1/4"	8 5/8"	24#	250-280	Sufficient to Circulate
7 7/8	4 1/2"	10.5#	1900'	150 Sacks

Attachments: Well location and acreage dedication plat  
Drilling Data  
Surface Use Plan  
Archaeological Survey

IN ABOVE SPACE DESCRIBE PROPOSED PROGRAM: If proposal is to deepen or plug back, give data on present productive zone and proposed new productive zone. If proposal is to drill or deepen directionally, give pertinent data on subsurface locations and measured and true vertical depths. Give blowout preventer program, if any.

24.

SIGNED

*Aprillana McIntire*

TITLE

Production

DATE 10-23-86

(This space for Federal or State office use)

PERMIT NO.

APPROVAL DATE

APPROVED BY

TITLE

DATE

11-6-86

CONDITIONS OF APPROVAL, IF ANY:

Subject to  
Like Approval  
by State

\*See Instructions On Reverse Side

APPROVAL SUBJECT TO  
GENERAL REQUIREMENTS AND  
SPECIAL STIPULATIONS  
ATTACHED

Title 18 U.S.C. Section 1001, makes it a crime for any person knowingly and willfully to make to any department or agency of the United States any false, fictitious or fraudulent statements or representations as to any matter within its jurisdiction.

**NEW MEXICO OIL CONSERVATION COMMISSION  
WELL LOCATION AND ACREAGE DEDICATION PLAT**

Form C-102  
Supersedes C-128  
Effective 1-1-65

All distances must be from the outer boundaries of the Section

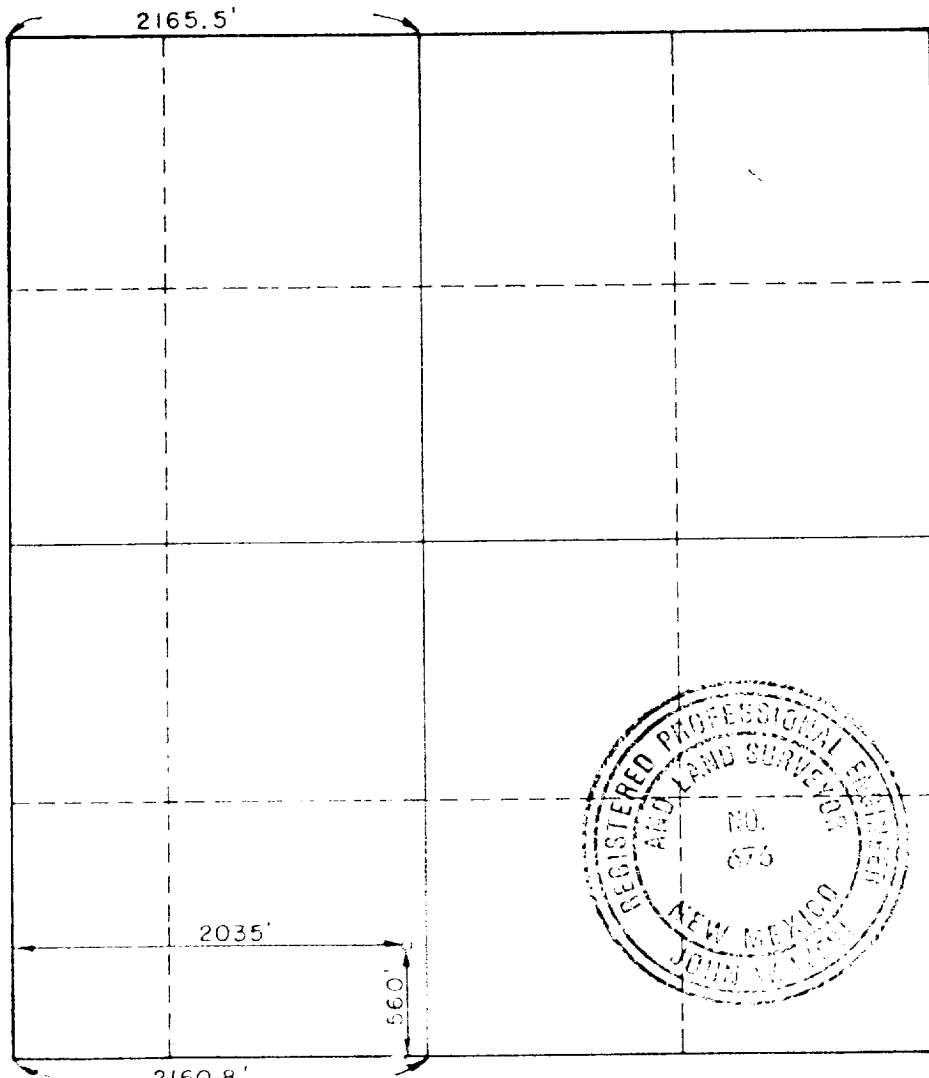
Operator <b>BEACH EXPLORATION INC.</b>		Lease <b>EXXON FED.</b>		Well No. <b>6</b>
Unit Letter <b>N</b>	Section <b>18</b>	Township <b>16 SOUTH</b>	Range <b>29 EAST</b>	County <b>EDDY</b>
Actual Footage Location of Well: <b>2035</b> feet from the <b>WEST</b> line and <b>560</b> feet from the <b>SOUTH</b> line				
Ground Level Elev. <b>3655.5'</b>	Producing Formation <b>High Lonesome</b>	Pool <b>High Queen</b>	Dedicated Acreage: <b>40</b> Acres	

1. Outline the acreage dedicated to the subject well by colored pencil or hachure marks on the plat below.
2. If more than one lease is dedicated to the well, outline each and identify the ownership thereof (both as to working interest and royalty).
3. If more than one lease of different ownership is dedicated to the well, have the interests of all owners been consolidated by communitization, unitization, force-pooling, etc?

☐ Yes ☐ No If answer is "yes," type of consolidation \_\_\_\_\_

If answer is "no," list the owners and tract descriptions which have actually been consolidated. (Use reverse side of this form if necessary.) \_\_\_\_\_

No allowable will be assigned to the well until all interests have been consolidated (by communitization, unitization, forced-pooling, or otherwise) or until a non-standard unit, eliminating such interests, has been approved by the Commission.



**CERTIFICATION**

I hereby certify that the information contained herein is true and complete to the best of my knowledge and belief.

*Carl Beach*

Name  
**Carl Beach**

Position  
**Vice President**

Company  
**Beach Exploration, Inc.**

Date  
**October 23, 1986**

I hereby certify that the well location shown on this plat was plotted from field notes of actual surveys made by me or under my supervision, and that the same is true and correct to the best of my knowledge and belief.

Date Surveyed  
**Sept. 29, 1986**

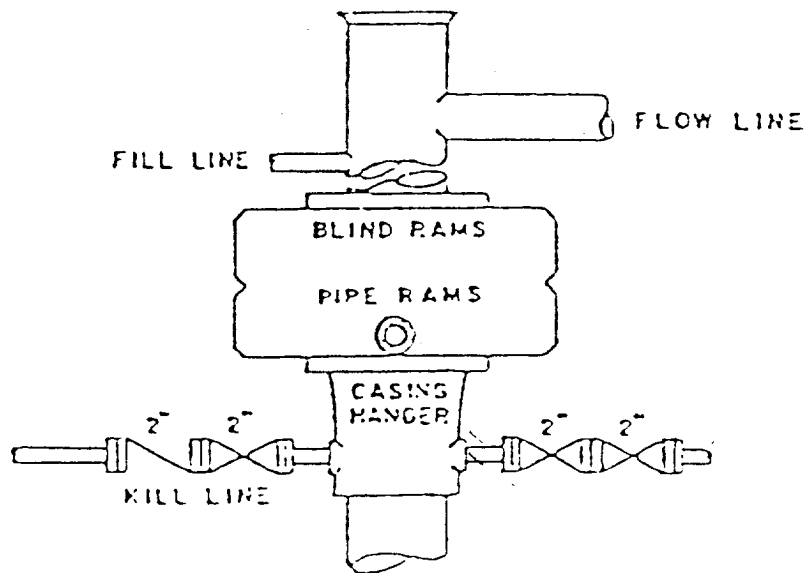
Registered Professional Engineer and Surveyor

*John W. West*

Certificate No. **JOHN W. WEST 676**

BLOWOUT PREVENTER ARRANGEMENT

Esso Exploration, Inc.  
Well #6 Exxon Federal  
SE/4SW/4 Sec. 16-163-29E



SUPPLEMENTAL DRILLING DATA

BEACH EXPLORATION, INC.  
WELL NO.6 EXXON FEDERAL  
SE1/4SW1/4 of SEC. 18, T16S,R29E  
EDDY COUNTY, NEW MEXICO

1. Surface Formation: Sandy soils of Quaternary Age.

2. Estimated Tops of Geologic Markers:

Andydrite	250'	Seven Rivers	910'
Salt	280'	Queen	1400'
Base Salt	610'	Penrose	1630'
Yates	660'	Grayburg	1890'

3. Anticipated Porosity Zones:

Water: Above 150'  
Oil: Seven Rivers, Queen, and Grayburg

4. Casing Design:

Size	Interval	Weight	Grade	Joints
8 5/8"	0-300'	24.0#	K-55	STC
4 1/2"	0-1900'	10.5#	K-55	STC

5. Pressure Control Equipment: Double Ram-Type Preventer

6. Circulating Medium:

0 - 300' Fresh water mud with gel or lime as  
needed for viscosity control.

300'- 1500' Brine Water

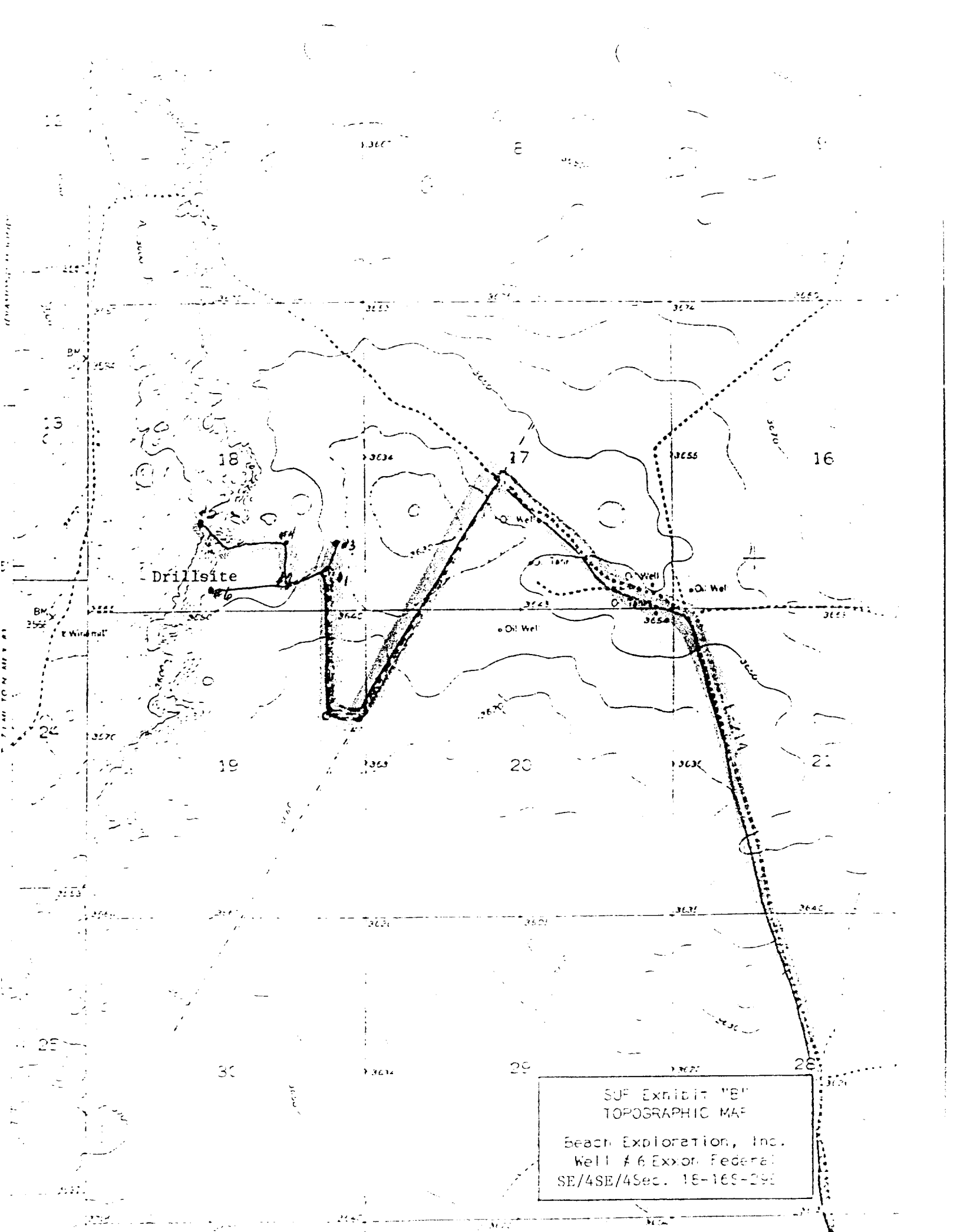
1500 - 1900' Salt water mud, conditioned as  
necessary for control of viscosity and  
water loss.

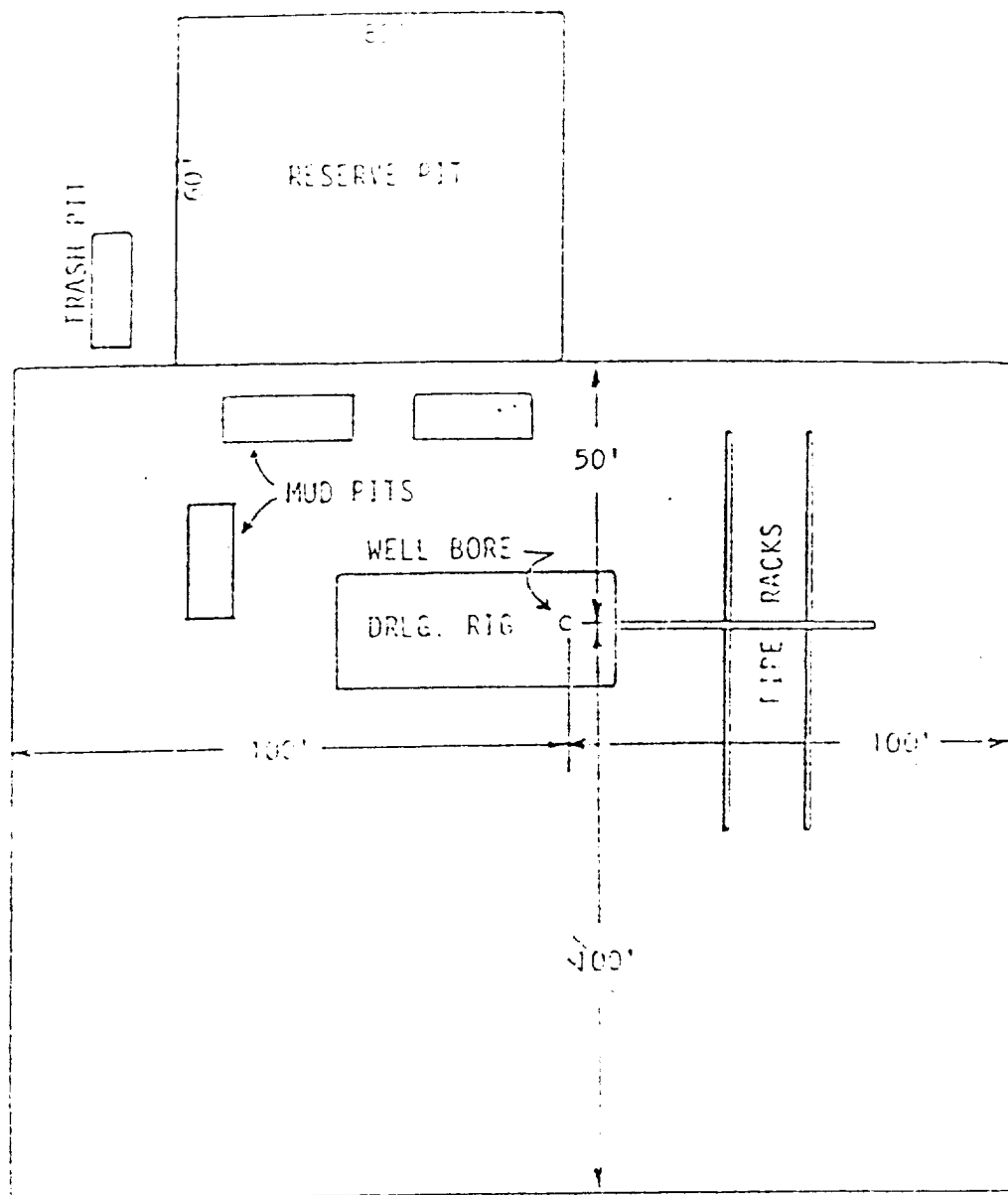
7. Auxiliary Equipment: Drill string safety valve.

8. Testing, logging and coring program: No coring or DST's  
are planned. Electric logs will include a CNL-FDC w/GR.

9. Abnormal pressure, Temperatures or gases: None Anticipated

10. Anticipated Starting Date: Approximately November 15,1986





SUP EXHIBIT "D"  
 SKETCH OF WELL PAD  
 Beach Exploration, Inc.  
 Well #6 Exxon Federal  
 SE/4SW/4Sec. 18-16S-29E